

Seller will sell what he owns with in the yellow lines  
Lines are approximate and their are lots owned by  
others with in.



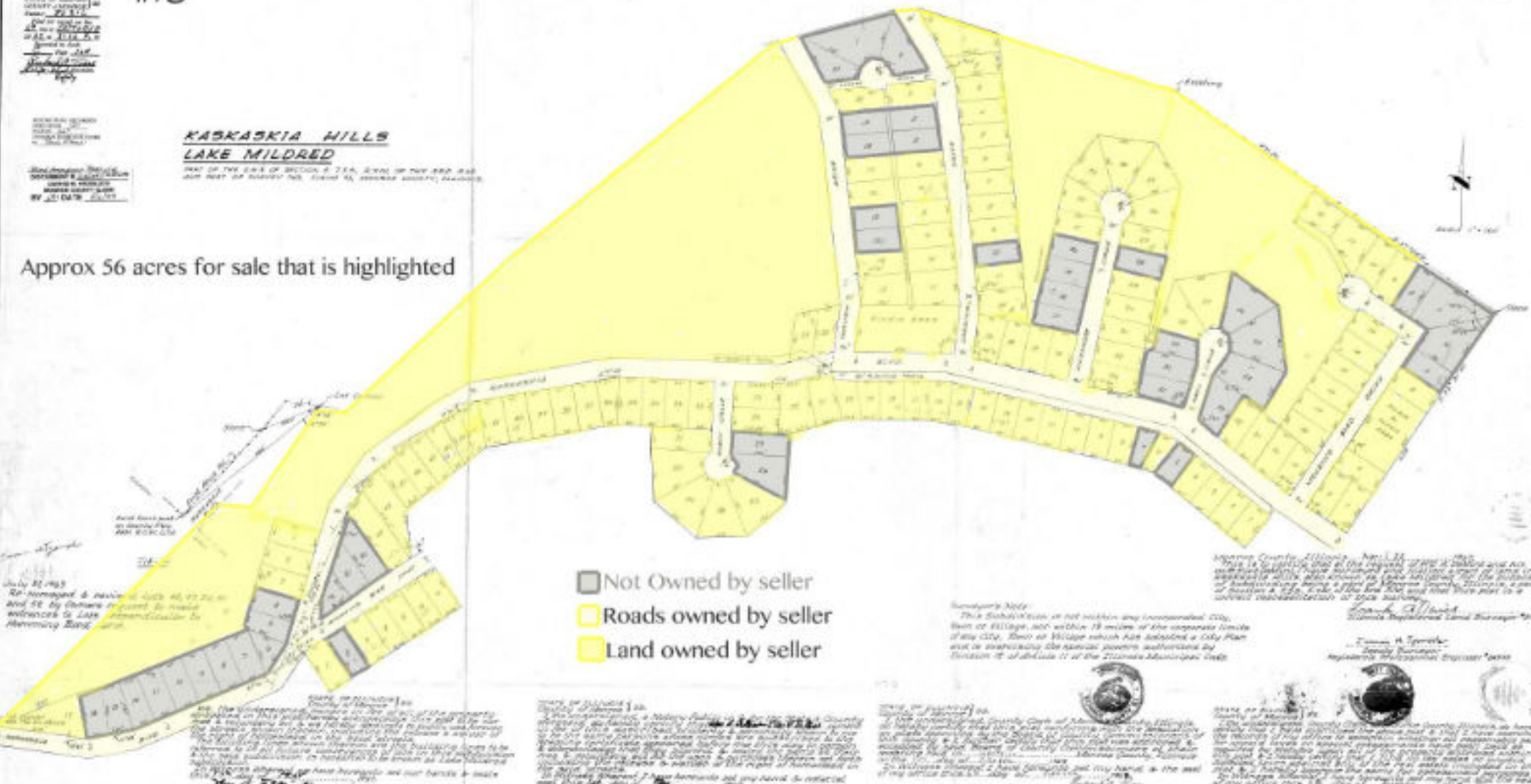
1170  
 CITY OF LAURENS  
 COUNTY OF LAURENS  
 MISSISSIPPI  
 PLAT NO. 1170  
 DATE OF RECORD  
 11/18/1983  
 BY J. D. GIBSON, CLERK

**KASKASKIA HILLS  
 LAKE MILDRED**

PART OF THE SW 1/4 OF SECTION 2, T14N, R10W OF THE 1836 AND 1842  
 SURVEYS OF THE PUBLIC LANDS, BEING 40 ACRES, MORE OR LESS, LOCATED IN

PLAT NO. 1170  
 DATE OF RECORD  
 11/18/1983  
 BY J. D. GIBSON, CLERK

Approx 56 acres for sale that is highlighted



- Not Owned by seller
- Roads owned by seller
- Land owned by seller

July 21, 1983  
 On account of & in lieu of  
 And so by Order of Court in and to the  
 witnesses of LAURENS COUNTY MISSISSIPPI  
 My hand and seal of office at the City of Laurel, Mississippi, this 21st day of July, 1983.

STATE OF MISSISSIPPI  
 COUNTY OF LAURENS  
 I, the undersigned, County Clerk of the County of Laurens, Mississippi, do hereby certify that the foregoing is a true and correct copy of the original record of the same as the same appears in the records of the County of Laurens, Mississippi, and that the same is a true and correct copy of the original record of the same as the same appears in the records of the County of Laurens, Mississippi.

STATE OF MISSISSIPPI  
 COUNTY OF LAURENS  
 I, the undersigned, County Clerk of the County of Laurens, Mississippi, do hereby certify that the foregoing is a true and correct copy of the original record of the same as the same appears in the records of the County of Laurens, Mississippi, and that the same is a true and correct copy of the original record of the same as the same appears in the records of the County of Laurens, Mississippi.

STATE OF MISSISSIPPI  
 COUNTY OF LAURENS  
 I, the undersigned, County Clerk of the County of Laurens, Mississippi, do hereby certify that the foregoing is a true and correct copy of the original record of the same as the same appears in the records of the County of Laurens, Mississippi, and that the same is a true and correct copy of the original record of the same as the same appears in the records of the County of Laurens, Mississippi.

STATE OF MISSISSIPPI  
 COUNTY OF LAURENS  
 I, the undersigned, County Clerk of the County of Laurens, Mississippi, do hereby certify that the foregoing is a true and correct copy of the original record of the same as the same appears in the records of the County of Laurens, Mississippi, and that the same is a true and correct copy of the original record of the same as the same appears in the records of the County of Laurens, Mississippi.

Approved County Clerk, April 21, 1983  
 This is to certify that the original of this plat and all other documents, maps and surveys filed in the office of the County Clerk of Laurens County, Mississippi, are on file in the office of the County Clerk of Laurens County, Mississippi, and that the same are a true and correct copy of the original record of the same as the same appears in the records of the County of Laurens, Mississippi.

James H. Terrell  
 County Clerk  
 Laurens County, Mississippi







SHADY LN

18-05

-001

HILLCREST DR

-005

BLACK OAK DR

RED OAK DR

OAK TREE LN

G RD

LAKE SHORE DR

-002

-004

-001

LAKE MILDRED DR

-099

18-05

-004

-002

-005

18-08 -006

-003

BLUFF RD

BLU