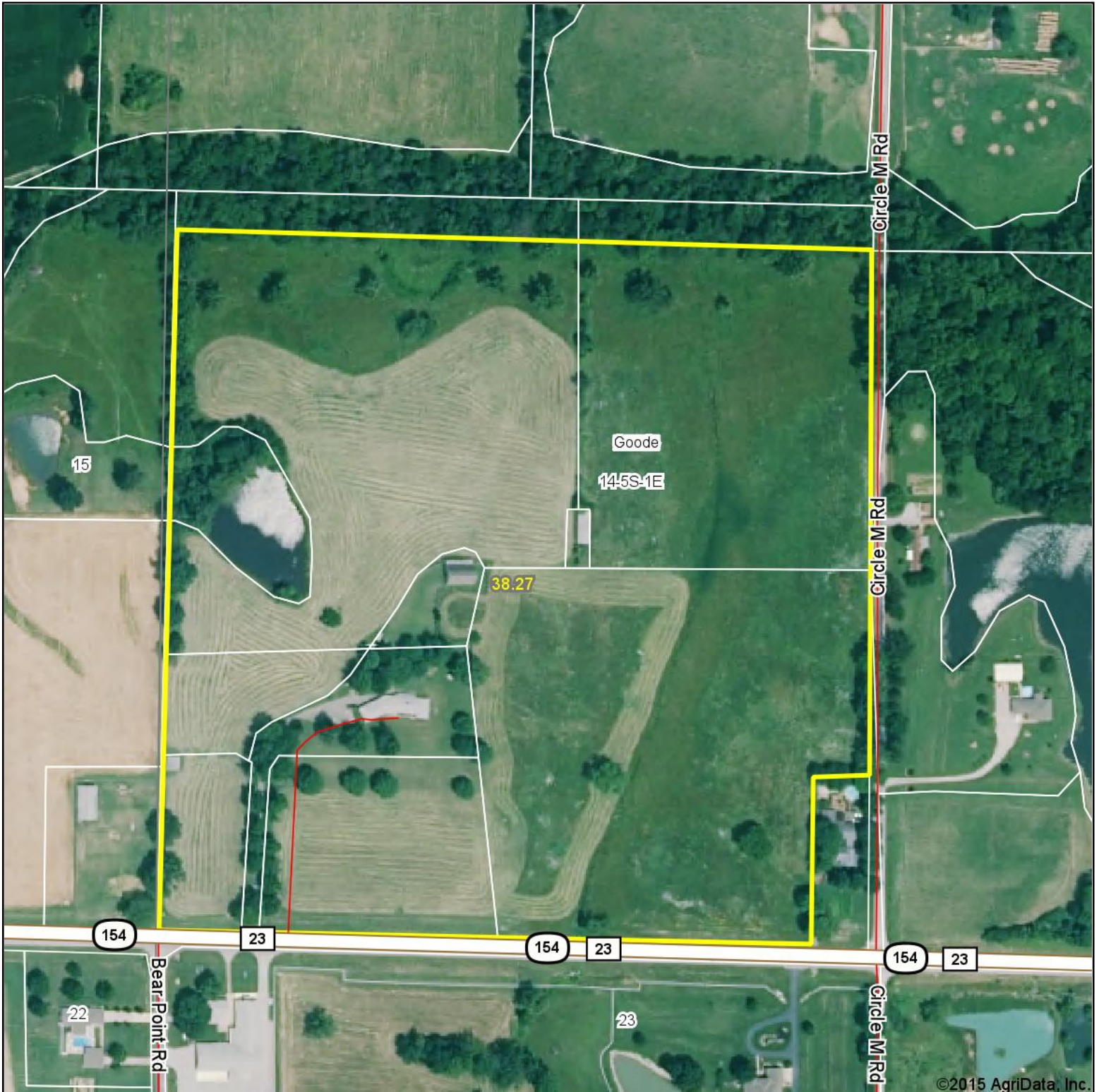


Aerial Map

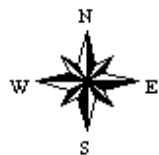


Maps Provided By:
 **surety**
CUSTOMIZED ONLINE MAPPING
© AgriData, Inc. 2014 www.AgriDataInc.com

14-5S-1E
Franklin County
Illinois

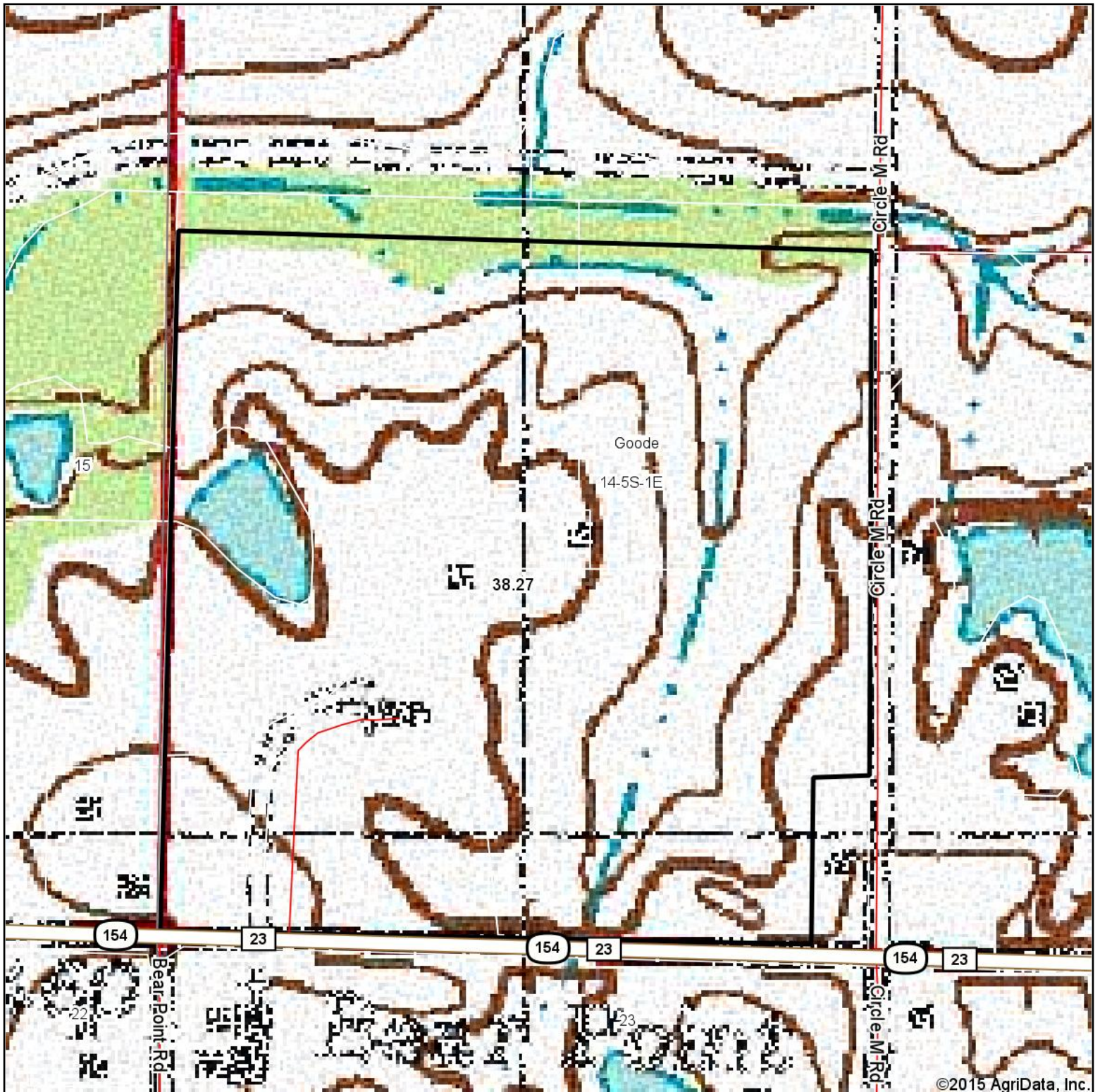
map center: 38° 5' 2.15, 89° 4' 30.28

scale: 3335



4/24/2015

Topography Map



©2015 AgriData, Inc.

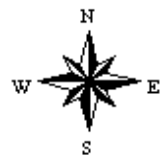


Maps Provided By:

CUSTOMIZED ONLINE MAPPING
© AgriData, Inc. 2014 www.AgriDataInc.com

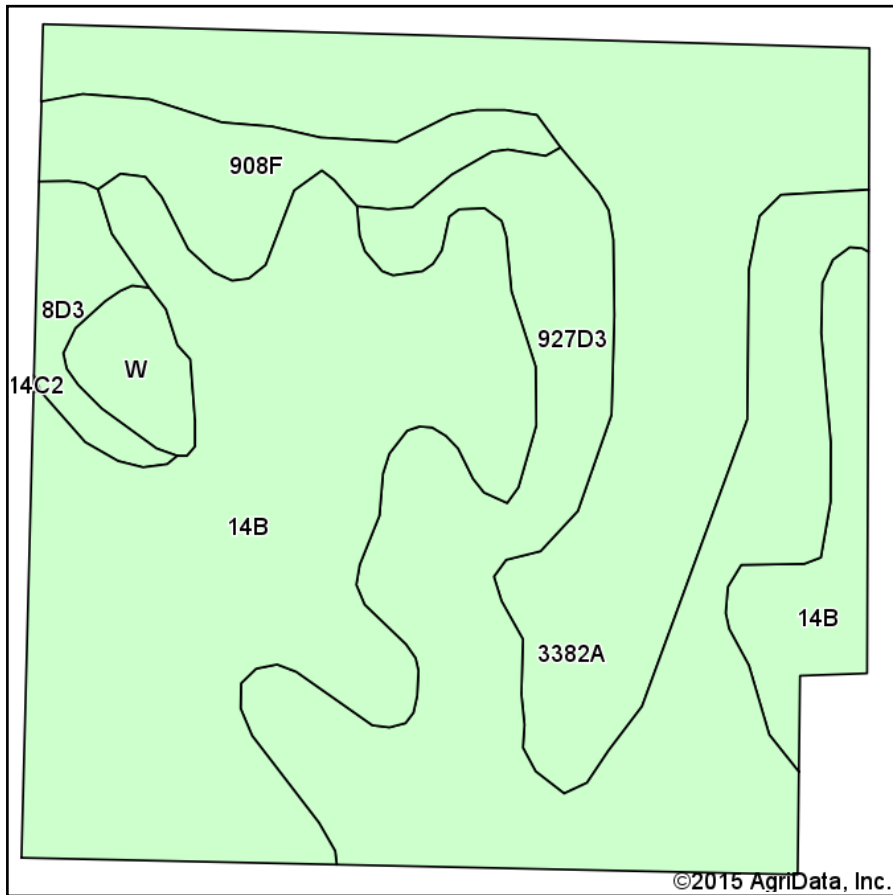
14-5S-1E
Franklin County
Illinois

map center: 38° 5' 2.15, 89° 4' 30.28
scale: 3335



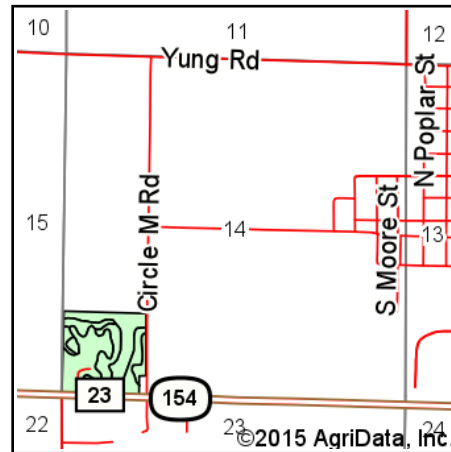
4/24/2015

Soil Map



Soils data provided by USDA and NRCS.

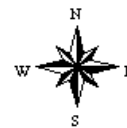
©2015 AgriData, Inc.



State: **Illinois**
 County: **Franklin**
 Location: **14-5S-1E**
 Township: **Goode**
 Acres: **38.27**
 Date: **4/24/2015**



Maps Provided By:



Area Symbol: IL055, Soil Area Version: 8

Code	Soil Description	Acres	Percent of field	Il. State Productivity Index Legend	Corn Bu/A	Soybeans Bu/A	Wheat Bu/A	Alfalfa <i>d</i> hay, T/A	Crop productivity index for optimum management
**14B	Ava silt loam, 2 to 5 percent slopes	13.64	35.6%		**134	**44	**54	**3.23	**99
**927D3	Blair-Atlas silty clay loams, 10 to 18 percent slopes, severely eroded	10.90	28.5%		**90	**30	**36	0.00	**68
3382A	Belknap silt loam, 0 to 2 percent slopes, frequently flooded	9.63	25.2%		156	52	63	0.00	117
**908F	Hickory-Kell silt loams, 18 to 35 percent slopes	2.33	6.1%		**87	**29	**34	0.00	**67
**8D3	Hickory clay loam, 10 to 18 percent slopes, severely eroded	0.96	2.5%		**98	**33	**40	**3.26	**75
W	Water	0.81	2.1%						
Weighted Average					120.4	39.9	48.4	1.23	90.1

Area Symbol: IL055, Soil Area Version: 8

Table: Optimum Crop Productivity Ratings for Illinois Soil by K.R. Olson and J.M. Lang, Office of Research, ACES, University of Illinois at Champaign-Urbana. Version: 1/2/2012 Amended Table S2 B811 (Updated 1/10/2012)

Crop yields and productivity indices for optimum management (B811) are maintained at the following NRES web site: <http://soilproductivity.nres.illinois.edu/>

** Indexes adjusted for slope and erosion according to Bulletin 811 Table S3

d Soils in the poorly drained group were not rated for alfalfa and are shown with a zero "0".

Soils data provided by USDA and NRCS. Soils data provided by University of Illinois at Champaign-Urbana.