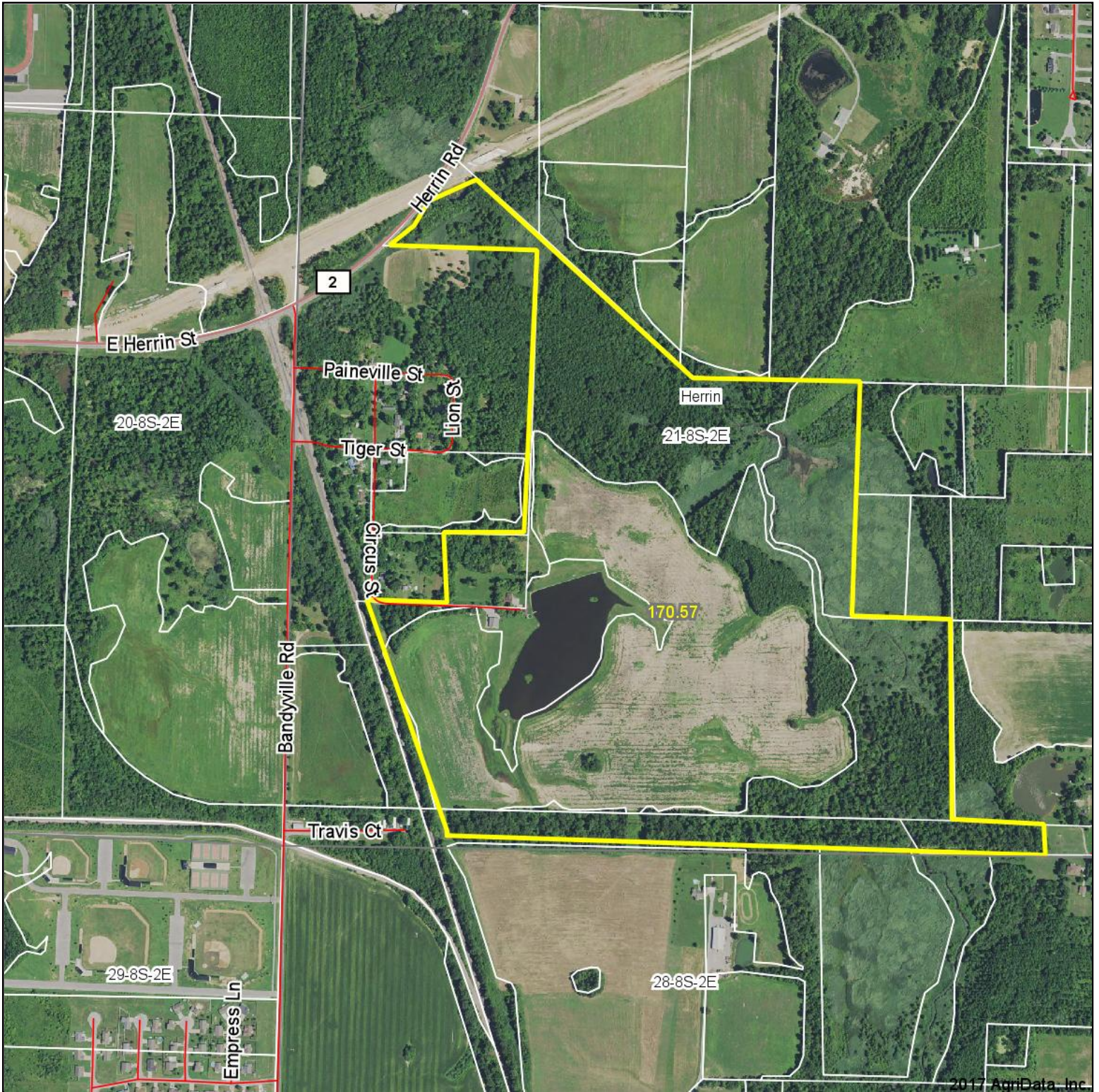


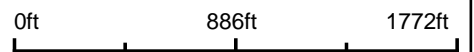
Aerial Map



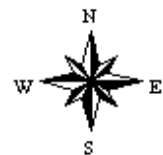
© 2017 AgriData, Inc.



map center: 37° 48' 27.26, -88° 59' 49.89



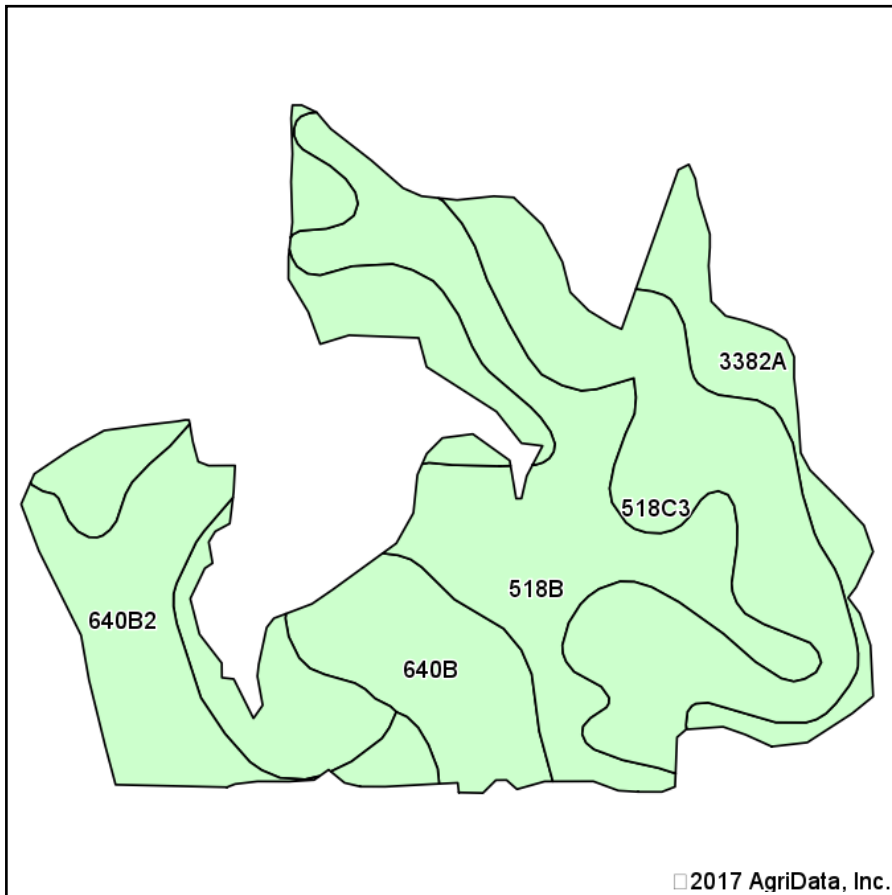
21-8S-2E
Williamson County
Illinois



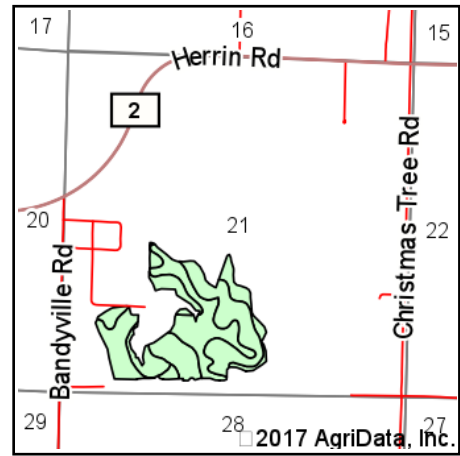
Maps Provided By:
surety
CUSTOMIZED ONLINE MAPPING
© AgriData, Inc. 2017 www.AgriDataInc.com

4/24/2017

Soils Map



Soils data provided by USDA and NRCS.



State: **Illinois**
 County: **Williamson**
 Location: **21-8S-2E**
 Township: **Herrin**
 Acres: **72.56**
 Date: **4/24/2017**



Maps Provided By:



© AgriData, Inc. 2017

www.AgriDataInc.com



Area Symbol: IL199, Soil Area Version: 11

Code	Soil Description	Acres	Percent of field	Il. State Productivity Index Legend	Corn Bu/A	Soybeans Bu/A	Wheat Bu/A	Crop productivity index for optimum management
**518C3	Rend silty clay loam, 5 to 10 percent slopes, severely eroded	30.26	41.7%		**105	**33	**41	**78
**518B	Rend silt loam, 2 to 5 percent slopes	18.41	25.4%		**141	**44	**55	**104
**640B2	Bluford silt loam, bench, 2 to 5 percent slopes, eroded	10.28	14.2%		**129	**42	**52	**96
**640B	Bluford silt loam, bench, 2 to 5 percent slopes	7.84	10.8%		**135	**44	**54	**100
3382A	Belknap silt loam, 0 to 2 percent slopes, frequently flooded	5.77	8.0%		156	52	63	117
Weighted Average					124.8	39.8	49.3	92.6

Table: Optimum Crop Productivity Ratings for Illinois Soil by K.R. Olson and J.M. Lang, Office of Research, ACES, University of Illinois at Champaign-Urbana. Version: 1/2/2012 Amended Table S2 B811

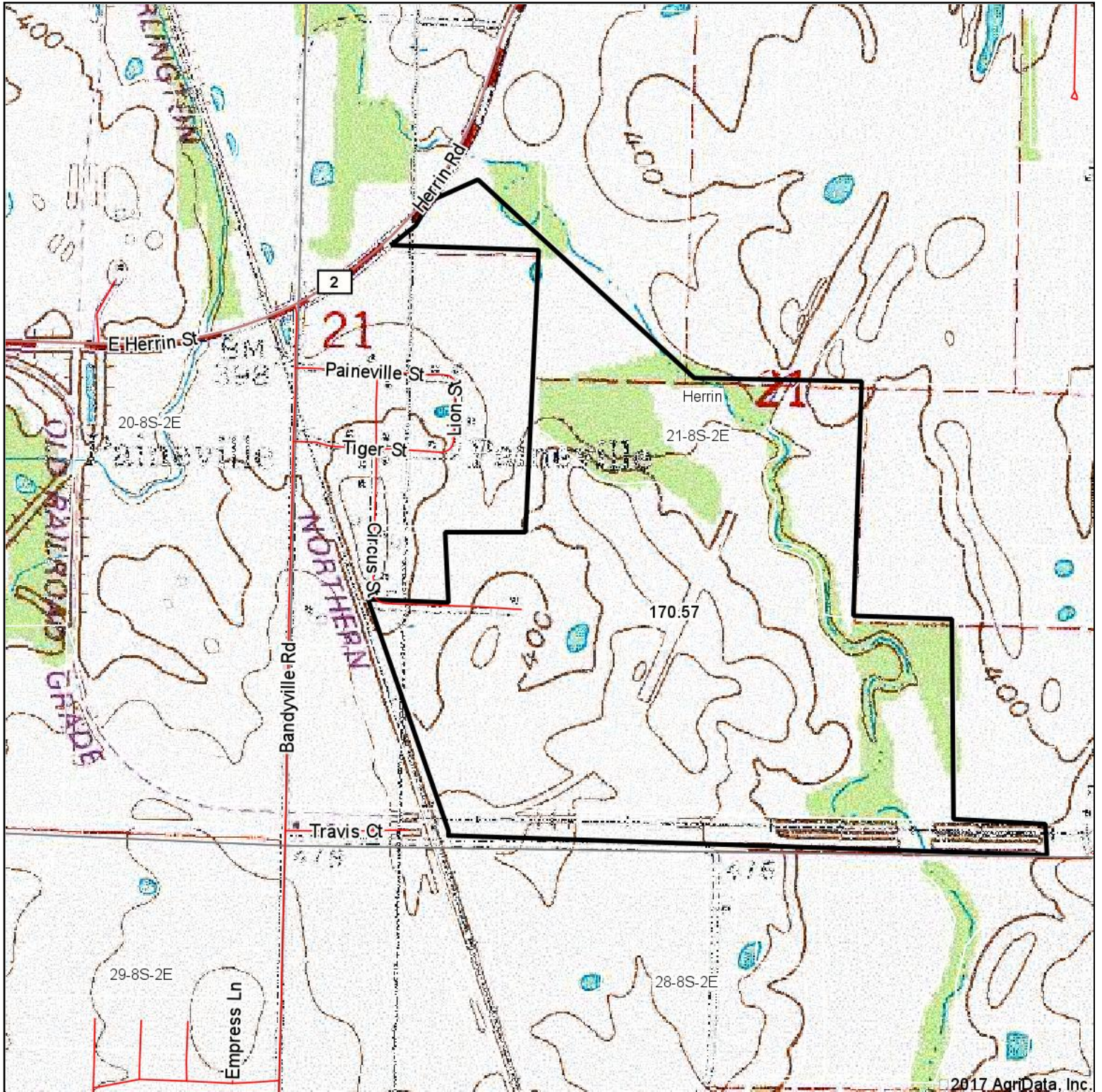
Crop yields and productivity indices for optimum management (B811) are maintained at the following NRES web site:

<https://www.ideals.illinois.edu/handle/2142/1027/>

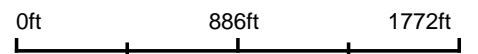
** Indexes adjusted for slope and erosion according to Bulletin 811 Table S3

Soils data provided by USDA and NRCS. Soils data provided by University of Illinois at Champaign-Urbana.

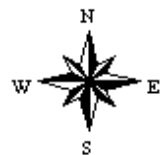
Topography Map



map center: 37° 48' 27.26, -88° 59' 49.89



21-8S-2E
Williamson County
Illinois



4/24/2017