

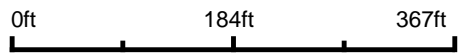
Aerial Map



© 2017 AgriData, Inc.



map center: 38° 13' 39.36, -89° 40' 38.05



32-3S-5W
Washington County
Illinois

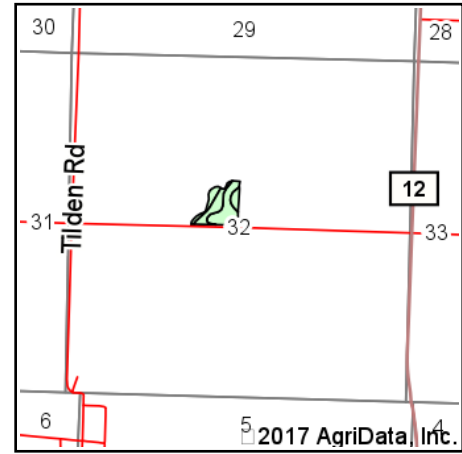
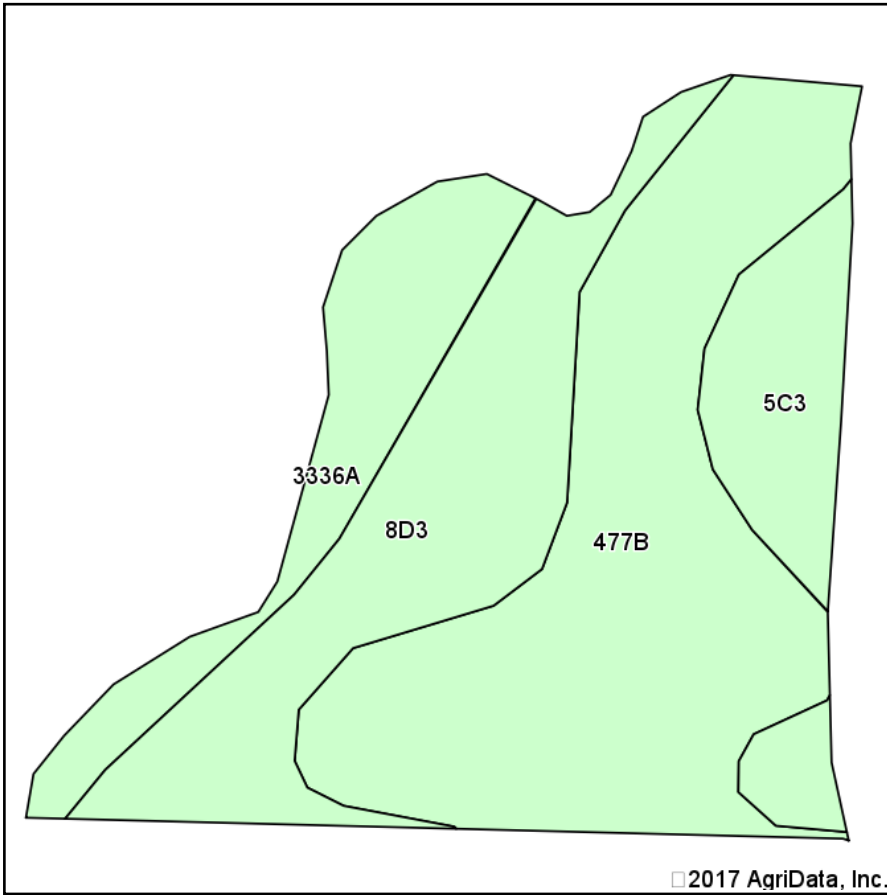


Maps Provided By:
 **surety**
CUSTOMIZED ONLINE MAPPING
© AgriData, Inc. 2017 www.AgriDataInc.com

5/3/2017

Field borders provided by Farm Service Agency as of 5/21/2008. Soils data provided by University of Illinois at Champaign-Urbana.

Soils Map



State: **Illinois**
 County: **Washington**
 Location: **32-3S-5W**
 Township: **Lively Grove**
 Acres: **7.72**
 Date: **5/3/2017**



Maps Provided By:



© AgriData, Inc. 2017

www.AgriDataInc.com



Area Symbol: IL189, Soil Area Version: 11

Code	Soil Description	Acres	Percent of field	Il. State Productivity Index Legend	Corn Bu/A	Soybeans Bu/A	Wheat Bu/A	Crop productivity index for optimum management
**477B	Winfield silt loam, 2 to 5 percent slopes	3.65	47.3%		**160	**50	**62	**118
**8D3	Hickory clay loam, 10 to 18 percent slopes, severely eroded	2.03	26.3%		**98	**33	**40	**75
3336A	Wilbur silt loam, 0 to 2 percent slopes, frequently flooded	1.07	13.9%		174	56	66	128
**5C3	Blair silty clay loam, 5 to 10 percent slopes, severely eroded	0.97	12.6%		**102	**33	**41	**77
Weighted Average					138.3	44.2	54.1	102.9

Table: Optimum Crop Productivity Ratings for Illinois Soil by K.R. Olson and J.M. Lang, Office of Research, ACES, University of Illinois at Champaign-Urbana. Version: 1/2/2012 Amended Table S2 B811

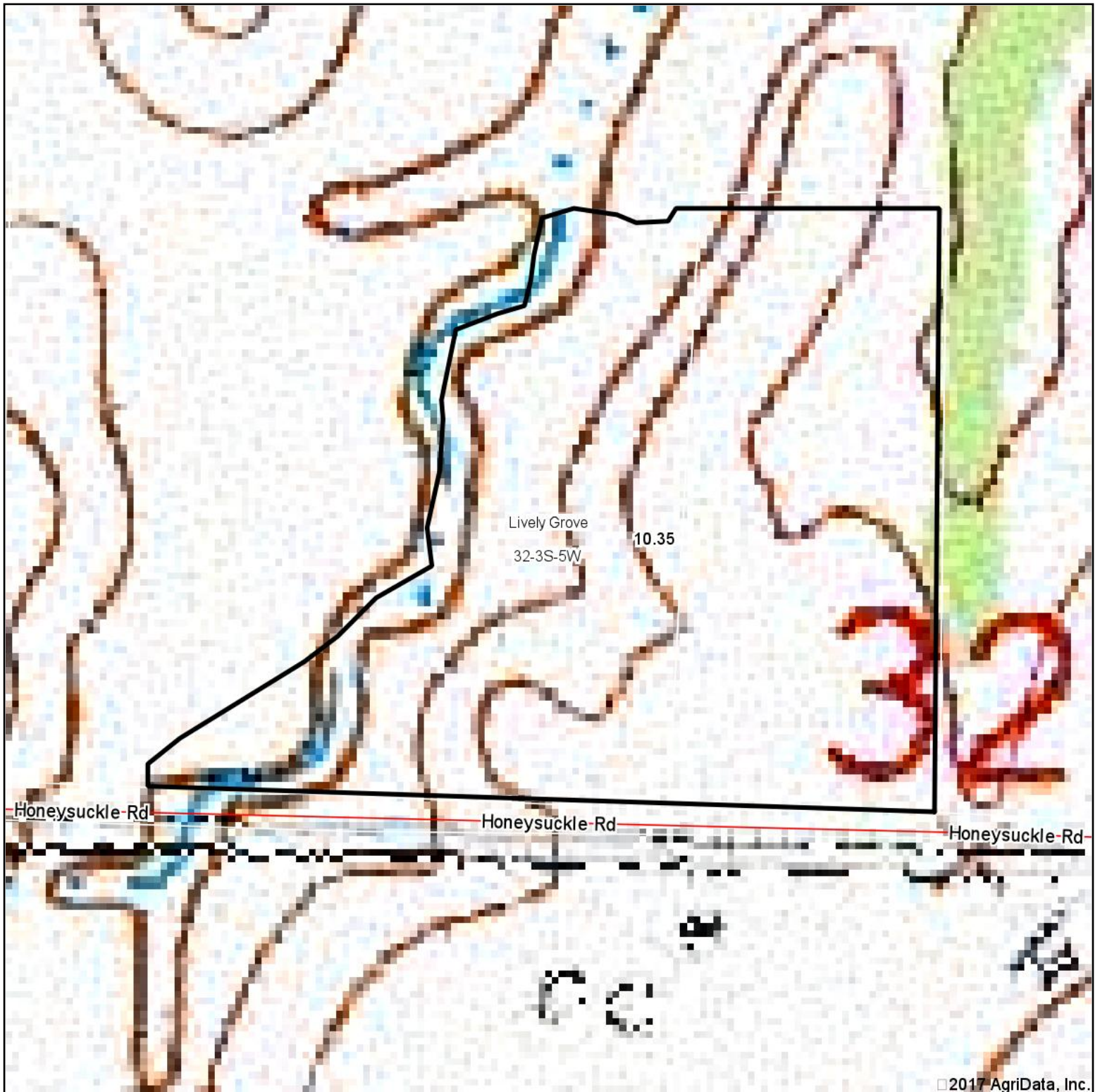
Crop yields and productivity indices for optimum management (B811) are maintained at the following NRES web site:

<https://www.ideals.illinois.edu/handle/2142/1027/>

** Indexes adjusted for slope and erosion according to Bulletin 811 Table S3

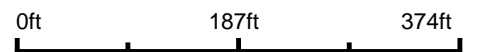
Soils data provided by USDA and NRCS. Soils data provided by University of Illinois at Champaign-Urbana.

Topography Map



©2017 AgriData, Inc.

map center: 38° 13' 39.34, -89° 40' 38.18



32-3S-5W
Washington County
Illinois



Maps Provided By:
surety
CUSTOMIZED ONLINE MAPPING
© AgriData, Inc. 2017 www.AgriDataInc.com

5/3/2017