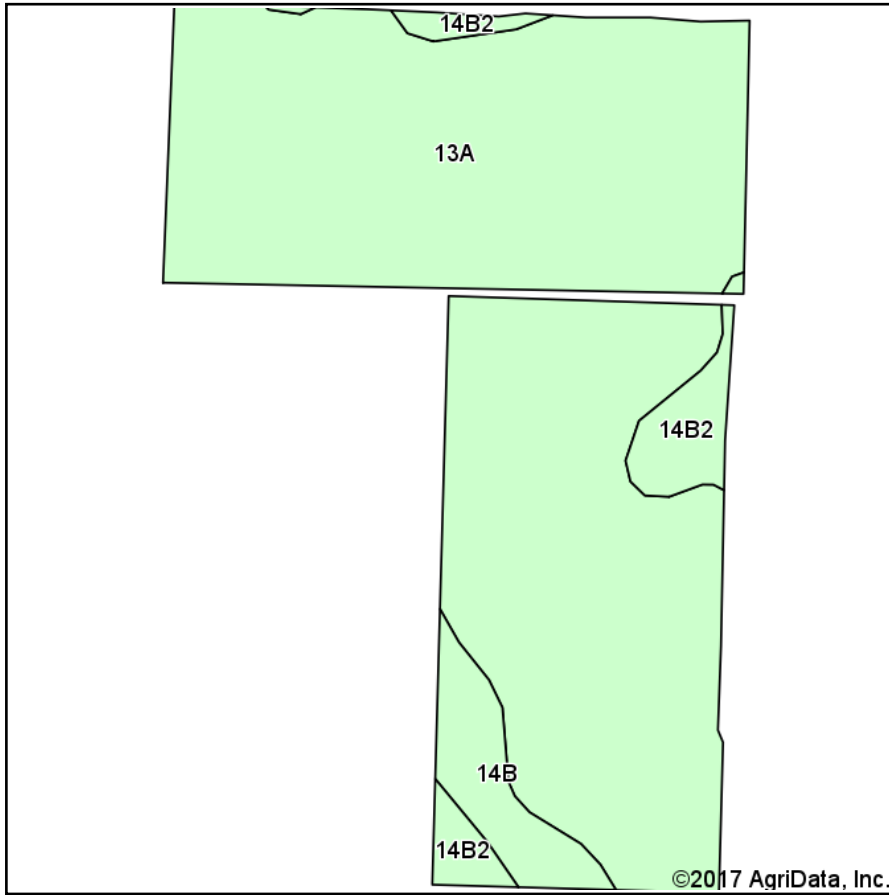
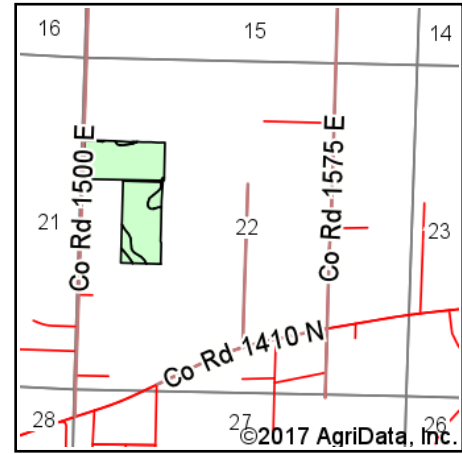


Soils Map



Soils data provided by USDA and NRCS.



State: **Illinois**
 County: **Jefferson**
 Location: **22-2S-3E**
 Township: **Mount Vernon**
 Acres: **38.28**
 Date: **7/27/2017**



Area Symbol: IL081, Soil Area Version: 9

Code	Soil Description	Acres	Percent of field	Il. State Productivity Index Legend	Corn Bu/A	Soybeans Bu/A	Crop productivity index for optimum management
13A	Bluford silt loam, 0 to 2 percent slopes	34.07	89.0%		136	44	101
**14B2	Ava silt loam, 2 to 5 percent slopes, eroded	2.18	5.7%		**126	**41	**93
**14B	Ava silt loam, 2 to 5 percent slopes	2.03	5.3%		**134	**44	**99
Weighted Average					135.3	43.8	100.4

Table: Optimum Crop Productivity Ratings for Illinois Soil by K.R. Olson and J.M. Lang, Office of Research, ACES, University of Illinois at Champaign-Urbana. Version: 1/2/2012 Amended Table S2 B811

Crop yields and productivity indices for optimum management (B811) are maintained at the following NRES web site:

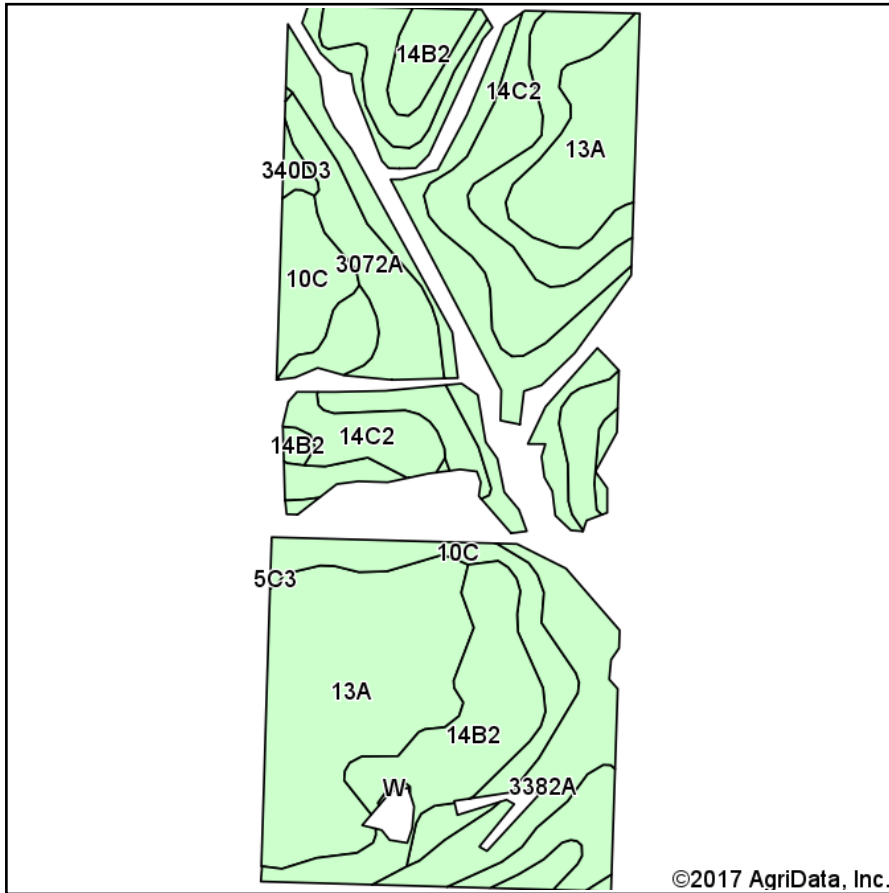
<https://www.ideals.illinois.edu/handle/2142/1027/>

** Indexes adjusted for slope and erosion according to Bulletin 811 Table S3

Soils data provided by USDA and NRCS. Soils data provided by University of Illinois at Champaign-Urbana.

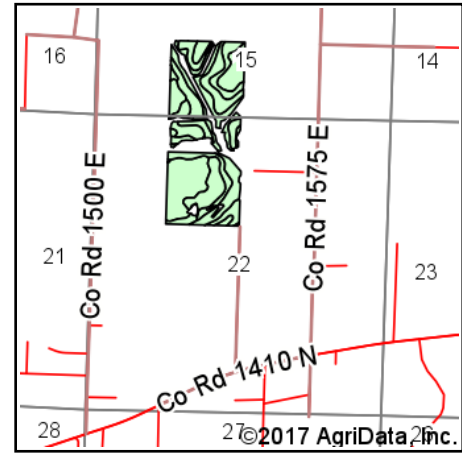
*c: Using Capabilities Class Dominant Condition Aggregation Method

Soils Map



Soils data provided by USDA and NRCS.

©2017 AgriData, Inc.



State: **Illinois**
 County: **Jefferson**
 Location: **15-2S-3E**
 Township: **Mount Vernon**
 Acres: **86.53**
 Date: **7/27/2017**



Maps Provided By:

 © AgriData, Inc. 2017 www.AgriDataInc.com



Area Symbol: IL081, Soil Area Version: 9

Code	Soil Description	Acres	Percent of field	Il. State Productivity Index Legend	Corn Bu/A	Soybeans Bu/A	Crop productivity index for optimum management
13A	Bluford silt loam, 0 to 2 percent slopes	21.80	25.2%		136	44	101
3382A	Belknap silt loam, 0 to 2 percent slopes, frequently flooded	17.03	19.7%		156	52	117
**14C2	Ava silt loam, 5 to 10 percent slopes, eroded	14.46	16.7%		**122	**40	**90
**14B2	Ava silt loam, 2 to 5 percent slopes, eroded	12.80	14.8%		**126	**41	**93
**10C	Plumfield silty clay loam, 5 to 10 percent slopes	8.90	10.3%		**103	**34	**78
3072A	Sharon silt loam, 0 to 2 percent slopes, frequently flooded	6.27	7.2%		164	53	122
**13B2	Bluford silt loam, 2 to 5 percent slopes, eroded	4.81	5.6%		**129	**42	**96
**340D3	Zanesville silt loam, till plain, 10 to 18 percent slopes, severely eroded	0.46	0.5%		**86	**30	**65
Weighted Average					134.1	43.9	99.8

Table: Optimum Crop Productivity Ratings for Illinois Soil by K.R. Olson and J.M. Lang, Office of Research, ACES, University of Illinois at Champaign-Urbana. Version: 1/2/2012 Amended Table S2 B811

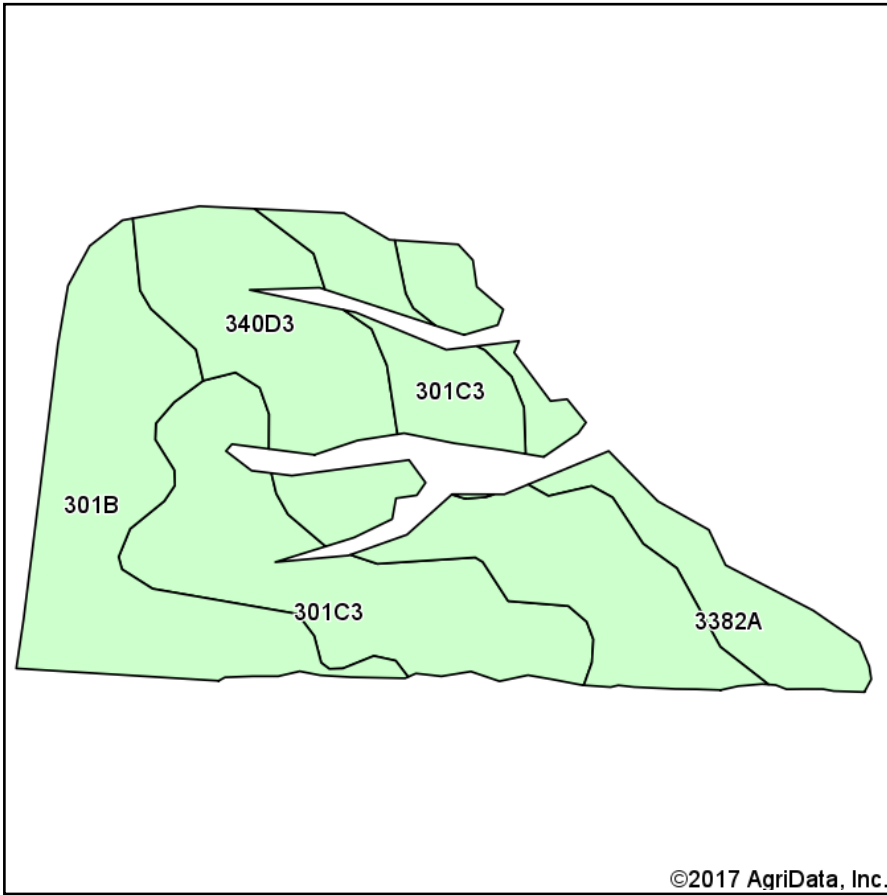
Crop yields and productivity indices for optimum management (B811) are maintained at the following NRES web site:
<https://www.ideals.illinois.edu/handle/2142/1027/>

** Indexes adjusted for slope and erosion according to Bulletin 811 Table S3

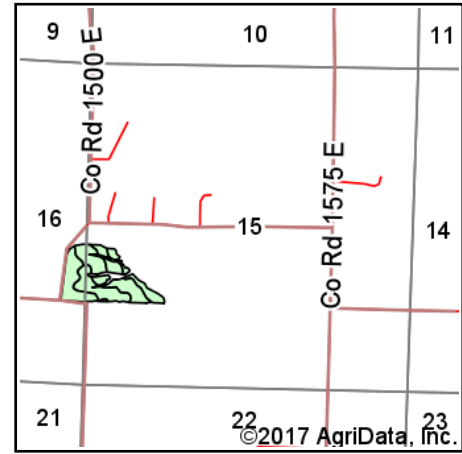
Soils data provided by USDA and NRCS. Soils data provided by University of Illinois at Champaign-Urbana.

*c: Using Capabilities Class Dominant Condition Aggregation Method

Soils Map



Soils data provided by USDA and NRCS.



State: **Illinois**
 County: **Jefferson**
 Location: **15-2S-3E**
 Township: **Mount Vernon**
 Acres: **23.5**
 Date: **7/27/2017**



Maps Provided By:



© AgriData, Inc. 2017

www.AgriDataInc.com



Area Symbol: IL081, Soil Area Version: 9

Code	Soil Description	Acres	Percent of field	Il. State Productivity Index Legend	Corn Bu/A	Soybeans Bu/A	Crop productivity index for optimum management
**340D3	Zanesville silt loam, till plain, 10 to 18 percent slopes, severely eroded	7.60	32.3%		**86	**30	**65
**301C3	Grantsburg silty clay loam, 5 to 10 percent slopes, severely eroded	7.17	30.5%		**99	**34	**75
**301B	Grantsburg silt loam, 2 to 5 percent slopes	5.80	24.7%		**133	**46	**101
3382A	Belknap silt loam, 0 to 2 percent slopes, frequently flooded	2.93	12.5%		156	52	117
Weighted Average					110.3	37.9	83.4

Table: Optimum Crop Productivity Ratings for Illinois Soil by K.R. Olson and J.M. Lang, Office of Research, ACES, University of Illinois at Champaign-Urbana. Version: 1/2/2012 Amended Table S2 B811

Crop yields and productivity indices for optimum management (B811) are maintained at the following NRES web site:

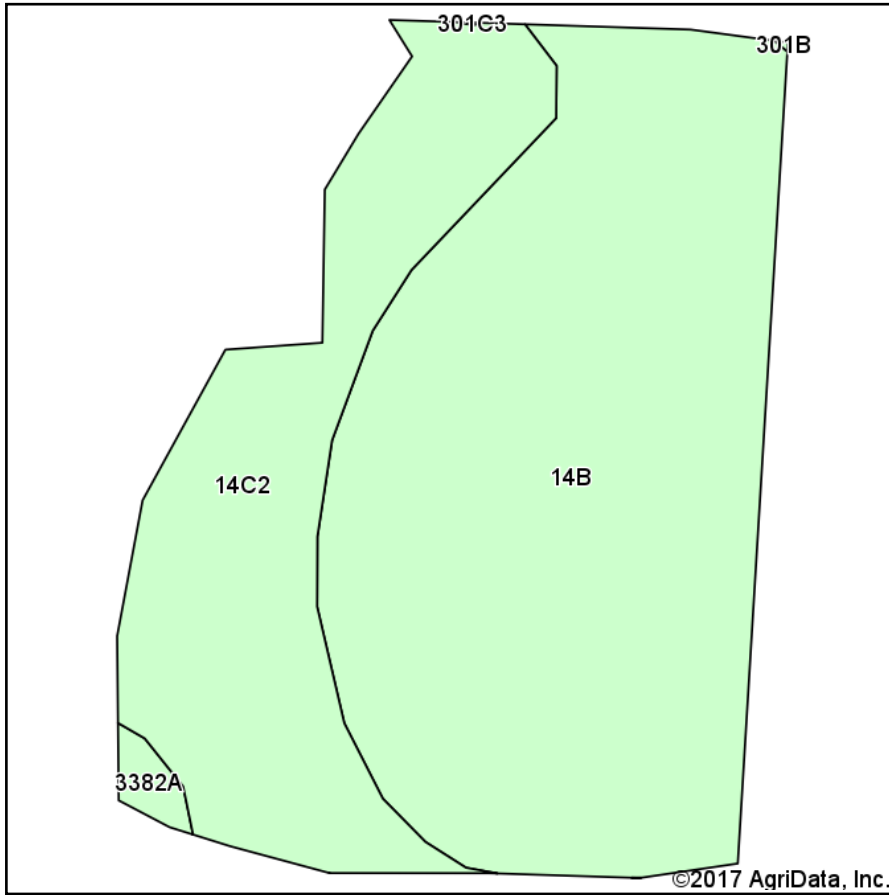
<https://www.ideals.illinois.edu/handle/2142/1027/>

** Indexes adjusted for slope and erosion according to Bulletin 811 Table S3

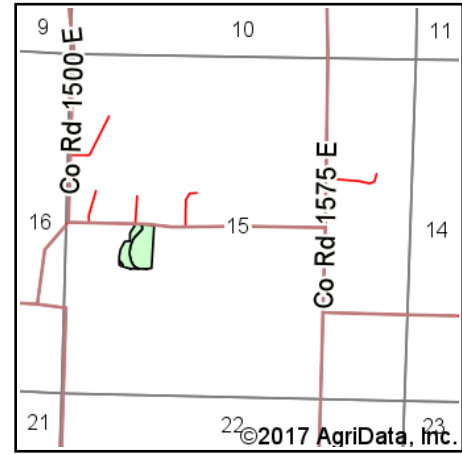
Soils data provided by USDA and NRCS. Soils data provided by University of Illinois at Champaign-Urbana.

*c: Using Capabilities Class Dominant Condition Aggregation Method

Soils Map



Soils data provided by USDA and NRCS.



State: **Illinois**
 County: **Jefferson**
 Location: **15-2S-3E**
 Township: **Mount Vernon**
 Acres: **7.01**
 Date: **7/27/2017**



Area Symbol: IL081, Soil Area Version: 9

Code	Soil Description	Acres	Percent of field	Il. State Productivity Index Legend	Corn Bu/A	Soybeans Bu/A	Crop productivity index for optimum management
**14B	Ava silt loam, 2 to 5 percent slopes	4.76	67.9%		**134	**44	**99
**14C2	Ava silt loam, 5 to 10 percent slopes, eroded	2.18	31.1%		**122	**40	**90
3382A	Belknap silt loam, 0 to 2 percent slopes, frequently flooded	0.07	1.0%		156	52	117
Weighted Average					130.5	42.8	96.4

Table: Optimum Crop Productivity Ratings for Illinois Soil by K.R. Olson and J.M. Lang, Office of Research, ACES, University of Illinois at Champaign-Urbana. Version: 1/2/2012 Amended Table S2 B811

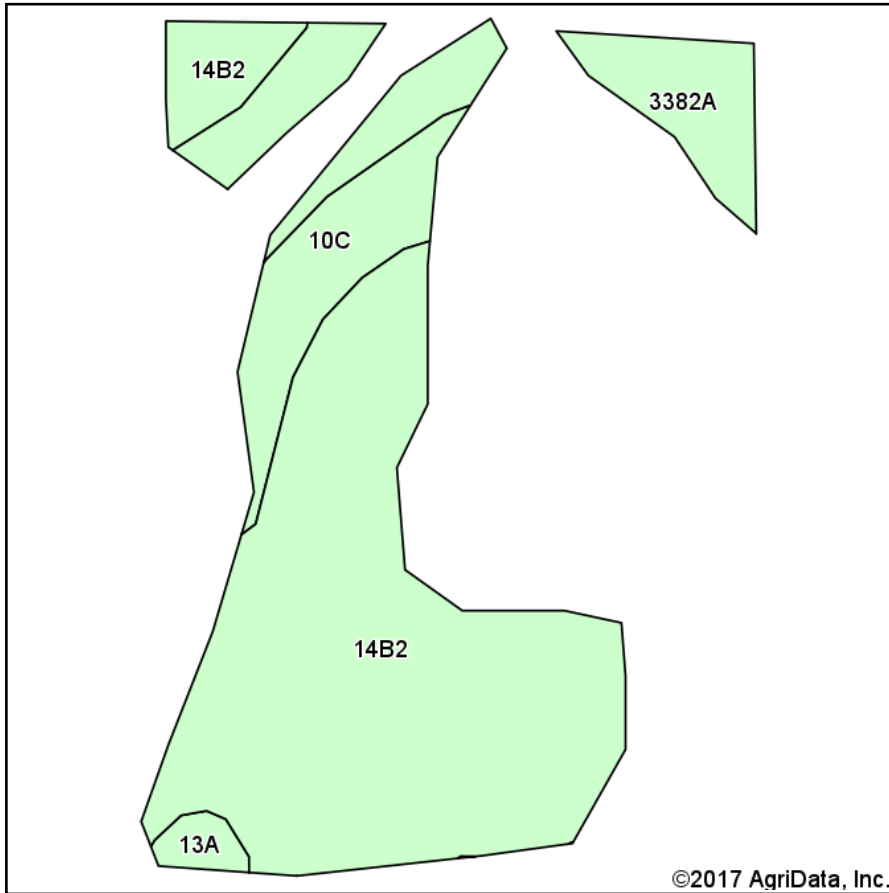
Crop yields and productivity indices for optimum management (B811) are maintained at the following NRES web site:
<https://www.ideals.illinois.edu/handle/2142/1027/>

** Indexes adjusted for slope and erosion according to Bulletin 811 Table S3

Soils data provided by USDA and NRCS. Soils data provided by University of Illinois at Champaign-Urbana.

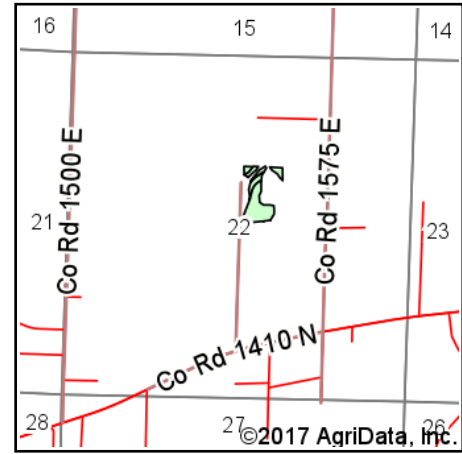
*c: Using Capabilities Class Dominant Condition Aggregation Method

Soils Map



Soils data provided by USDA and NRCS.

©2017 AgriData, Inc.



State: **Illinois**
 County: **Jefferson**
 Location: **22-2S-3E**
 Township: **Mount Vernon**
 Acres: **5.8**
 Date: **7/27/2017**



Maps Provided By:



© AgriData, Inc. 2017

www.AgriDataInc.com



Area Symbol: IL081, Soil Area Version: 9

Code	Soil Description	Acres	Percent of field	Il. State Productivity Index Legend	Corn Bu/A	Soybeans Bu/A	Crop productivity index for optimum management
**14B2	Ava silt loam, 2 to 5 percent slopes, eroded	4.02	69.3%		**126	**41	**93
3382A	Belknap silt loam, 0 to 2 percent slopes, frequently flooded	1.04	17.9%		156	52	117
**10C	Plumfield silty clay loam, 5 to 10 percent slopes	0.64	11.0%		**103	**34	**78
13A	Bluford silt loam, 0 to 2 percent slopes	0.10	1.7%		136	44	101
Weighted Average					129	42.3	95.8

Table: Optimum Crop Productivity Ratings for Illinois Soil by K.R. Olson and J.M. Lang, Office of Research, ACES, University of Illinois at Champaign-Urbana. Version: 1/2/2012 Amended Table S2 B811

Crop yields and productivity indices for optimum management (B811) are maintained at the following NRES web site:

<https://www.ideals.illinois.edu/handle/2142/1027/>

** Indexes adjusted for slope and erosion according to Bulletin 811 Table S3

Soils data provided by USDA and NRCS. Soils data provided by University of Illinois at Champaign-Urbana.

*c: Using Capabilities Class Dominant Condition Aggregation Method