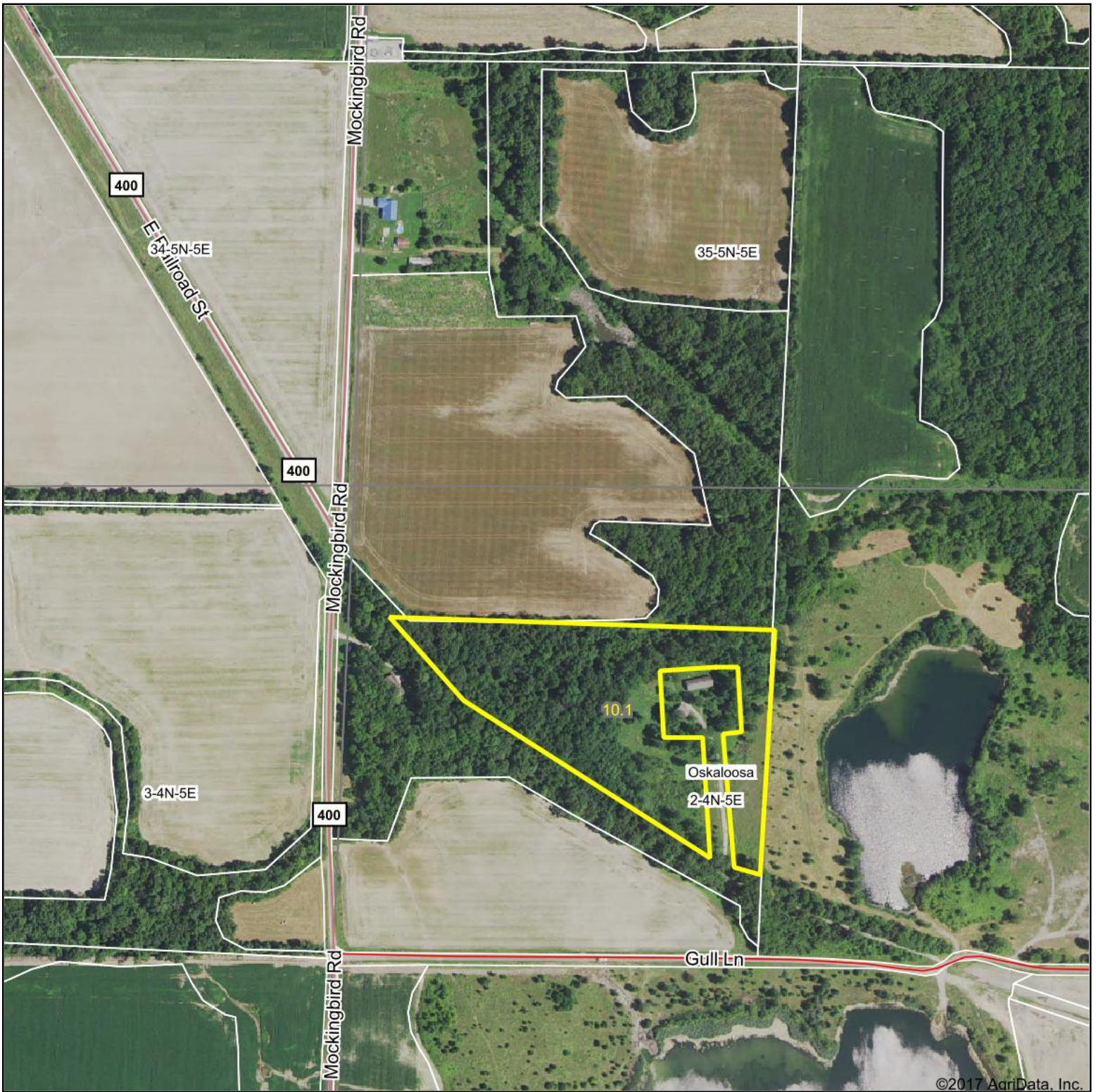


Aerial Map

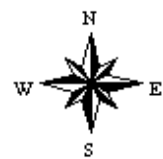


map center: 38° 49' 36.27, -88° 37' 0.84



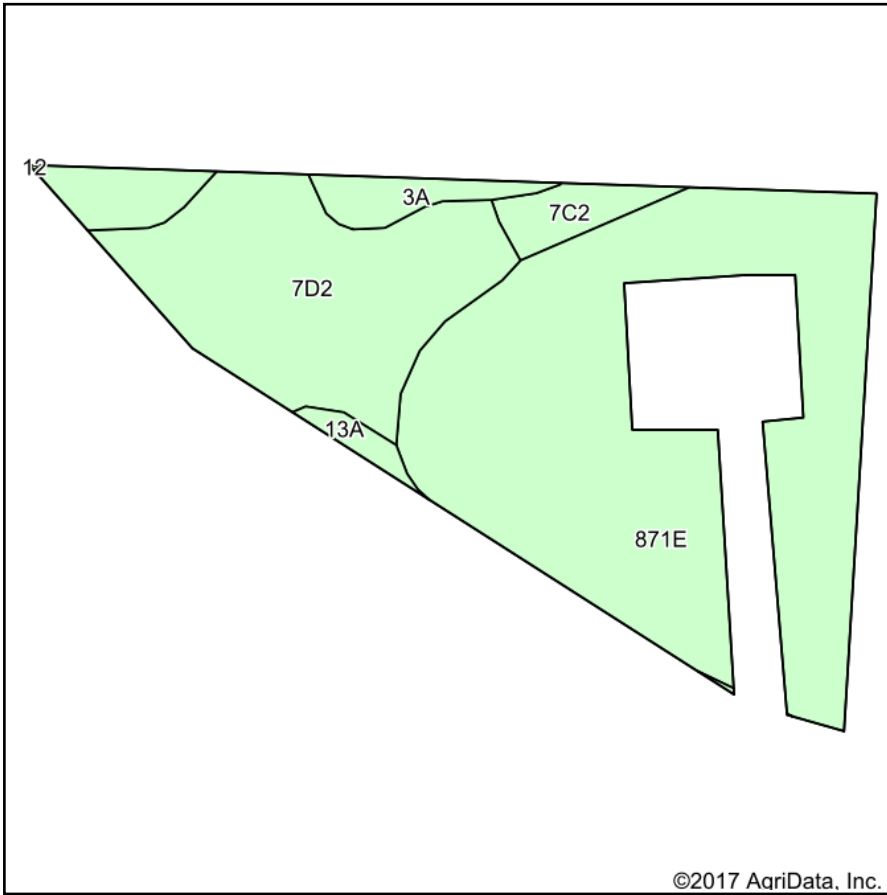
Maps Provided By:
surety
CUSTOMIZED ONLINE MAPPING
© AgriData, Inc. 2017 www.AgriDataInc.com

2-4N-5E
Clay County
Illinois

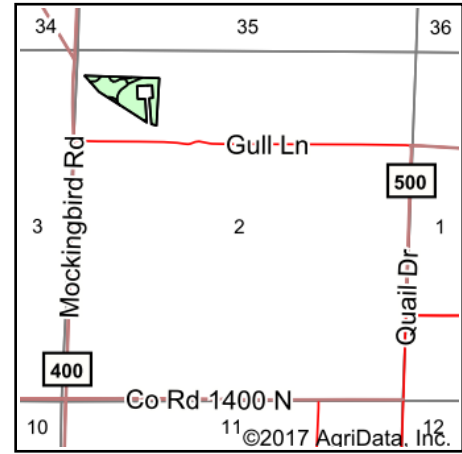


11/8/2017

Soils Map



Soils data provided by USDA and NRCS.



State: **Illinois**
 County: **Clay**
 Location: **2-4N-5E**
 Township: **Oskaloosa**
 Acres: **10.1**
 Date: **11/8/2017**



Area Symbol: IL025, Soil Area Version: 11

Code	Soil Description	Acres	Percent of field	Il. State Productivity Index Legend	Corn Bu/A	Soybeans Bu/A	Wheat Bu/A	Grass-legume e hay, T/A	Crop productivity index for optimum management
**871E	Lenzburg clay loam, 15 to 25 percent slopes, stony	6.20	61.4%		**104	**35	**39	**3.49	**78
**7D2	Atlas silt loam, 10 to 18 percent slopes, eroded	2.76	27.3%		**98	**34	**39	**2.95	**76
3A	Hoyleton silt loam, 0 to 2 percent slopes	0.67	6.6%		146	46	58	4.64	108
**7C2	Atlas silt loam, 5 to 10 percent slopes, eroded	0.33	3.3%		**105	**37	**41	**3.16	**81
13A	Bluford silt loam, 0 to 2 percent slopes	0.14	1.4%		136	44	55	3.39	101
Weighted Average					105.6	35.6	40.5	3.41	79.9

Table: Optimum Crop Productivity Ratings for Illinois Soil by K.R. Olson and J.M. Lang, Office of Research, ACES, University of Illinois at Champaign-Urbana. Version: 1/2/2012 Amended Table S2 B811

Crop yields and productivity indices for optimum management (B811) are maintained at the following NRES web site:
<https://www.ideals.illinois.edu/handle/2142/1027/>

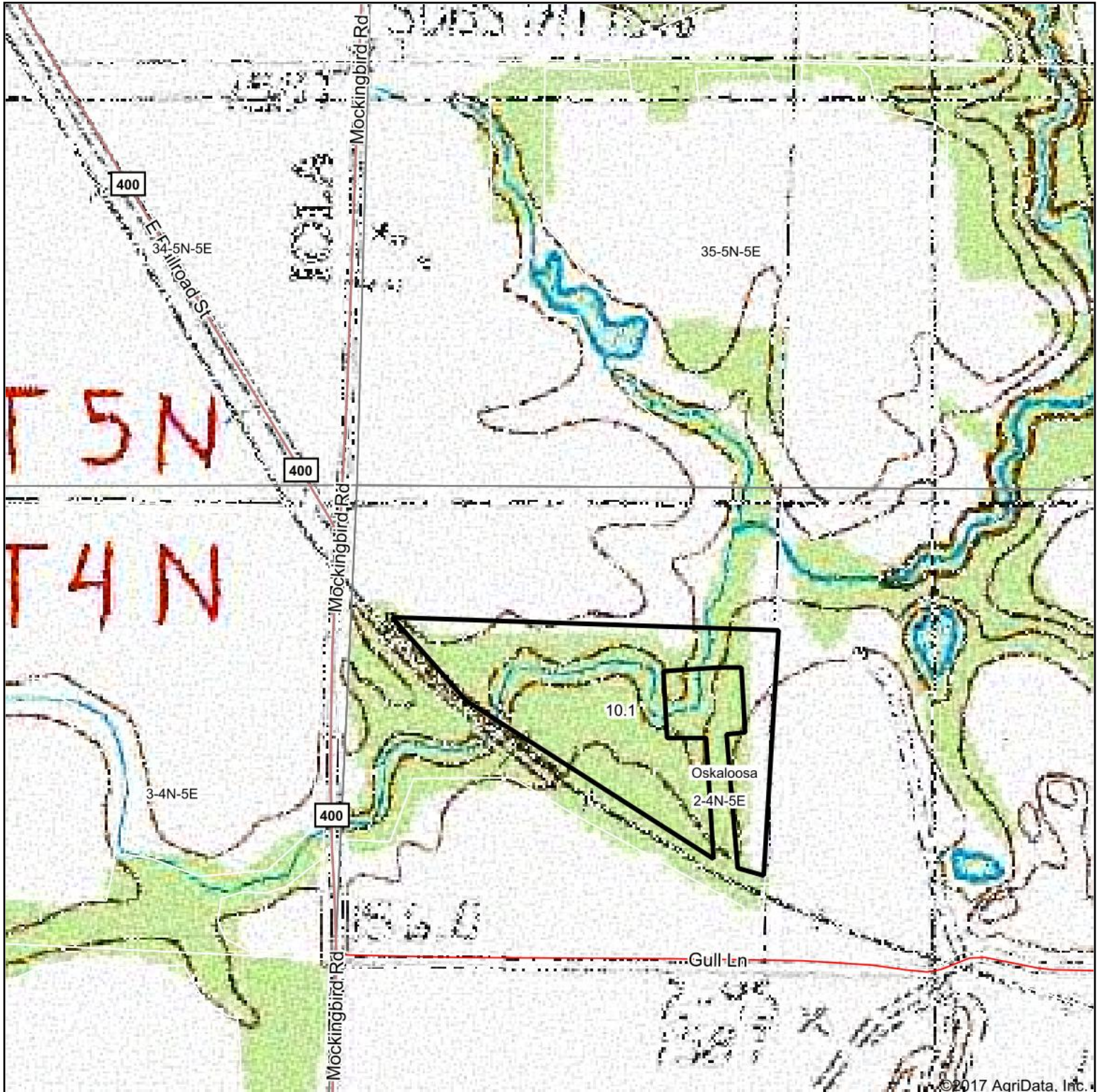
** Indexes adjusted for slope and erosion according to Bulletin 811 Table S3

e Soils in the well drained group were not rated for grass-legume and are shown with a zero "0".

Soils data provided by USDA and NRCS. Soils data provided by University of Illinois at Champaign-Urbana.

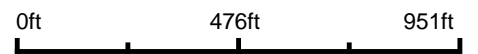
*c: Using Capabilities Class Dominant Condition Aggregation Method

Topography Map



©2017 AgriData, Inc.

map center: 38° 49' 36.27, -88° 37' 0.84



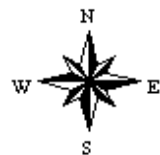
Maps Provided By:



© AgriData, Inc. 2017

www.AgriDataInc.com

2-4N-5E
Clay County
Illinois



11/8/2017