

Aerial Map



map center: 38° 51' 30.8, -88° 26' 28.69



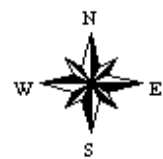
Maps Provided By:



© AgriData, Inc. 2017

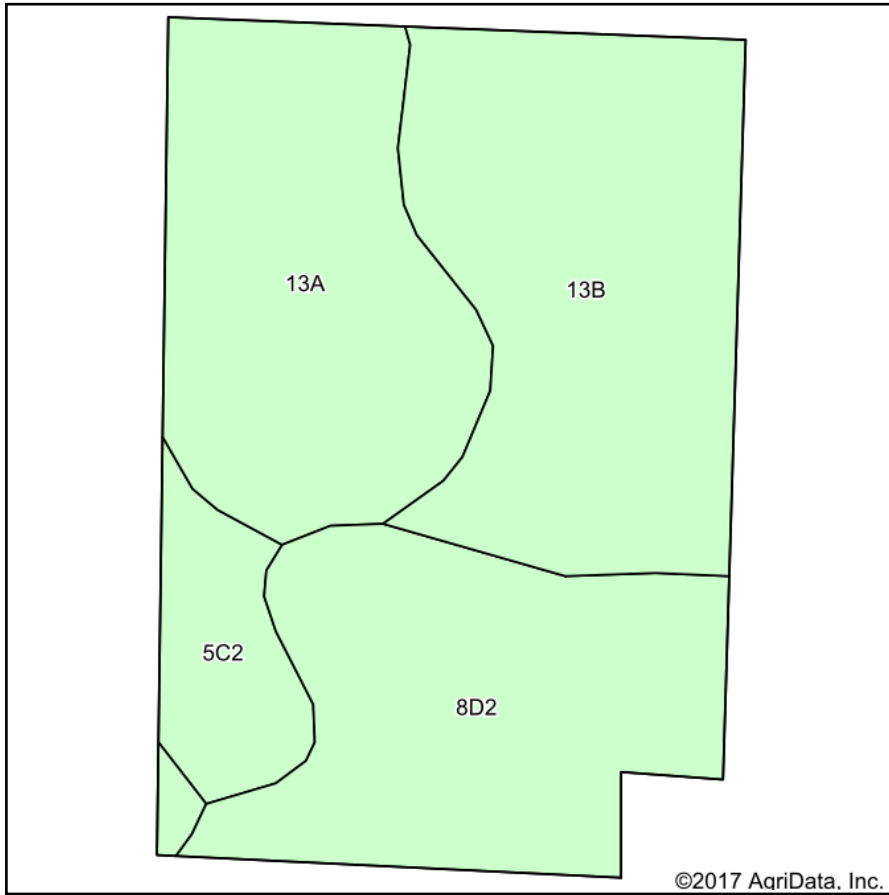
www.AgriDataInc.com

20-5N-7E
Clay County
Illinois

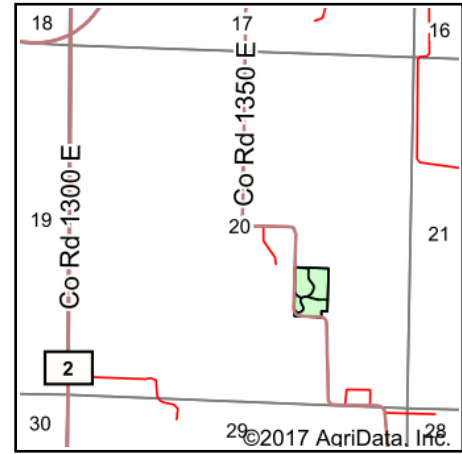


10/2/2017

Soils Map



Soils data provided by USDA and NRCS.



State: **Illinois**
 County: **Clay**
 Location: **20-5N-7E**
 Township: **Bible Grove**
 Acres: **8.63**
 Date: **10/2/2017**



Area Symbol: IL025, Soil Area Version: 11

Code	Soil Description	Acres	Percent of field	Il. State Productivity Index Legend	Corn Bu/A	Soybeans Bu/A	Wheat Bu/A	Alfalfa ^d hay, T/A	Crop productivity index for optimum management
**13B	Bluford silt loam, 2 to 5 percent slopes	2.96	34.3%		**135	**44	**54	0.00	**100
13A	Bluford silt loam, 0 to 2 percent slopes	2.54	29.4%		136	44	55	0.00	101
**8D2	Hickory silt loam, 10 to 18 percent slopes, eroded	2.47	28.6%		**108	**36	**44	**3.58	**82
**5C2	Passport silt loam, 5 to 10 percent slopes, eroded	0.66	7.6%		**124	**41	**50	0.00	**94
Weighted Average					126.7	41.5	51.1	1.02	94.7

Table: Optimum Crop Productivity Ratings for Illinois Soil by K.R. Olson and J.M. Lang, Office of Research, ACES, University of Illinois at Champaign-Urbana. Version: 1/2/2012 Amended Table S2 B811

Crop yields and productivity indices for optimum management (B811) are maintained at the following NRES web site:

<https://www.ideals.illinois.edu/handle/2142/1027/>

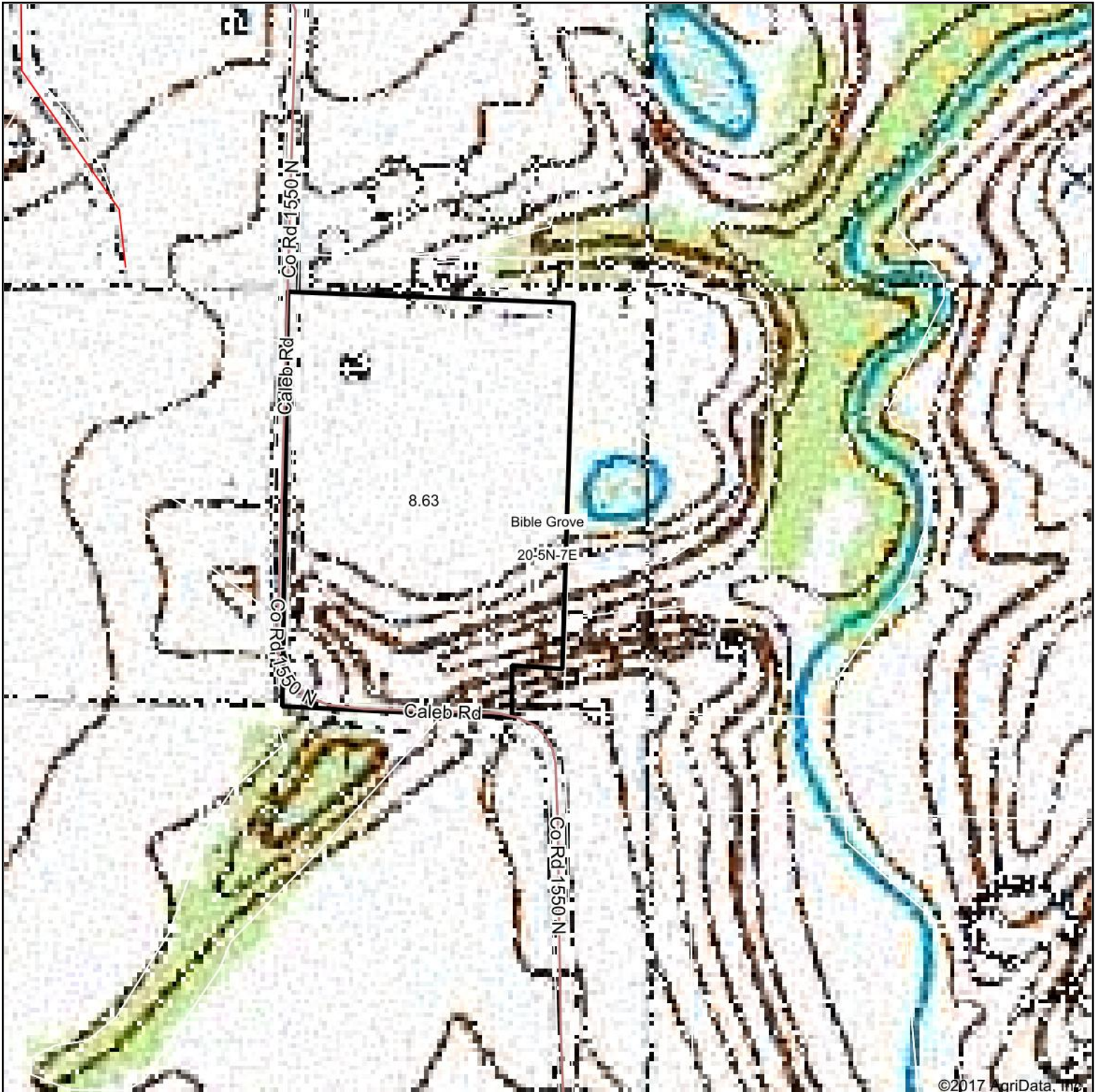
** Indexes adjusted for slope and erosion according to Bulletin 811 Table S3

^d Soils in the poorly drained group were not rated for alfalfa and are shown with a zero "0".

Soils data provided by USDA and NRCS. Soils data provided by University of Illinois at Champaign-Urbana.

*c: Using Capabilities Class Dominant Condition Aggregation Method

Topography Map



©2017 AgriData, Inc.

map center: 38° 51' 30.8, -88° 26' 28.69

0ft 282ft 564ft



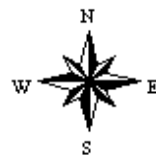
Maps Provided By:



© AgriData, Inc. 2017

www.AgriDataInc.com

20-5N-7E
Clay County
Illinois



10/2/2017