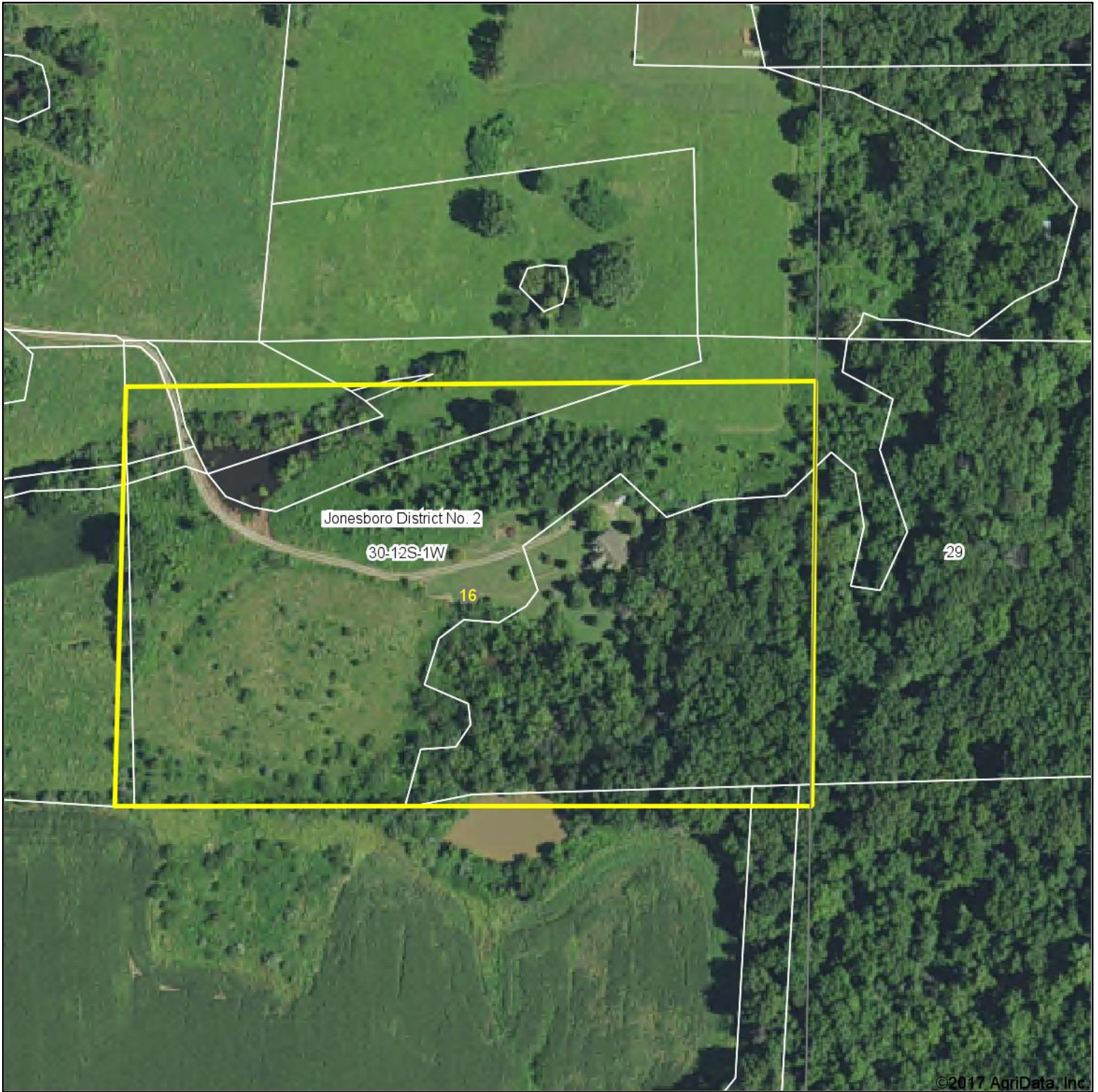


Aerial Map



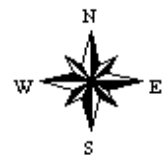
©2017 AgriData, Inc.

map center: 37° 26' 34.46, -89° 15' 3.88



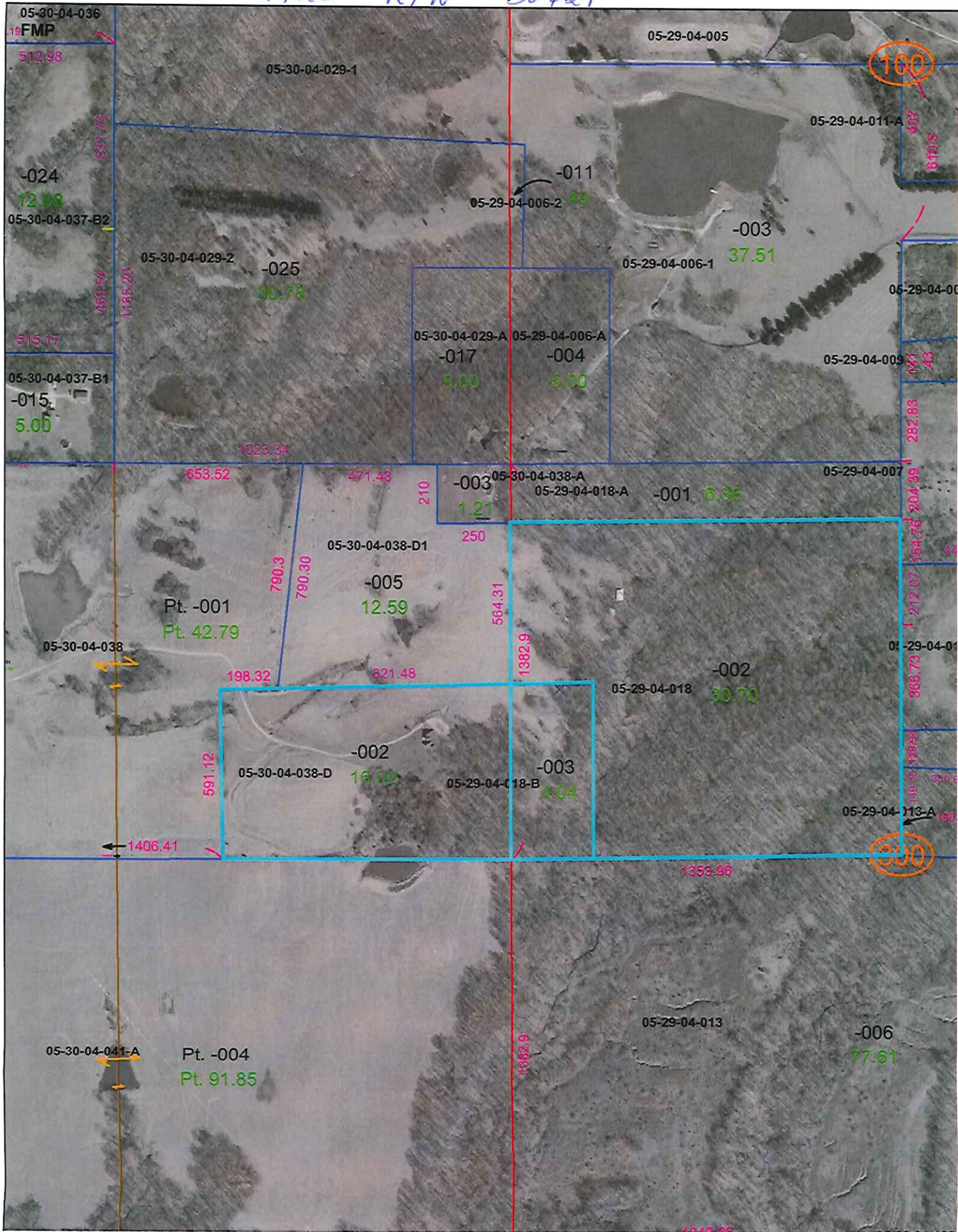
Maps Provided By:
 **surety**[®]
CUSTOMIZED ONLINE MAPPING
© AgriData, Inc. 2017 www.AgriDataInc.com

30-12S-1W
Union County
Illinois

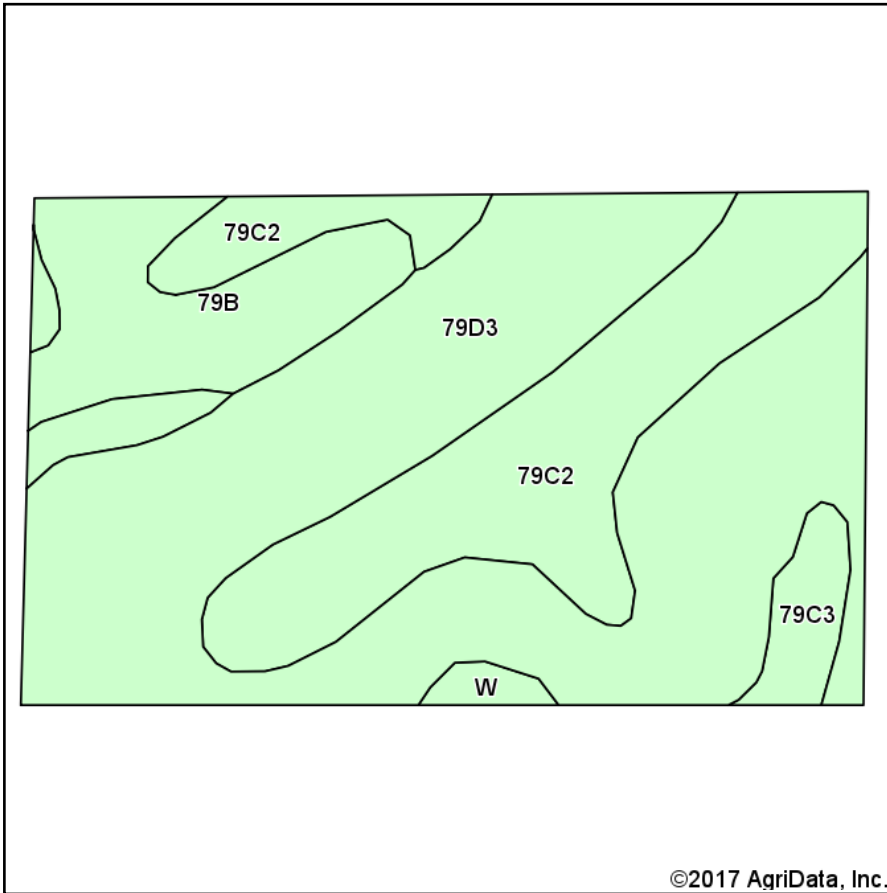


6/4/2017

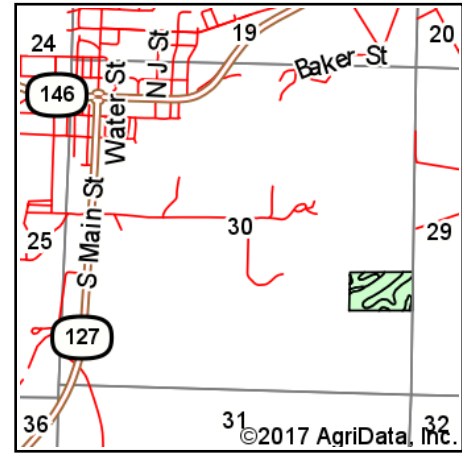
T12S R1W 30429



Soils Map



Soils data provided by USDA and NRCS.



State: **Illinois**
 County: **Union**
 Location: **30-12S-1W**
 Township: **Jonesboro District No. 2**
 Acres: **16**
 Date: **6/4/2017**



Maps Provided By:



© AgriData, Inc. 2017

www.AgriDataInc.com



Area Symbol: IL181, Soil Area Version: 10

Code	Soil Description	Acres	Percent of field	Il. State Productivity Index Legend	Corn Bu/A	Soybeans Bu/A	Wheat Bu/A	Alfalfa ^d hay T/A	Crop productivity index for optimum management
**79D3	Menfro silt loam, 10 to 18 percent slopes, severely eroded	8.87	55.4%		**134	**41	**51	**3.96	**97
**79C2	Menfro silt loam, 5 to 10 percent slopes, eroded	4.25	26.6%		**153	**47	**59	**4.55	**112
**79B	Menfro silt loam, 2 to 5 percent slopes	1.92	12.0%		**163	**50	**62	**4.84	**119
**79C3	Menfro silt loam, 5 to 10 percent slopes, severely eroded	0.80	5.0%		**142	**44	**54	**4.21	**103
W	Water	0.16	1.0%						
Weighted Average					141.6	43.4	54.1	4.20	103

Table: Optimum Crop Productivity Ratings for Illinois Soil by K.R. Olson and J.M. Lang, Office of Research, ACES, University of Illinois at Champaign-Urbana. Version: 1/2/2012 Amended Table S2 B811

Crop yields and productivity indices for optimum management (B811) are maintained at the following NRES web site:

<https://www.ideals.illinois.edu/handle/2142/1027/>

** Indexes adjusted for slope and erosion according to Bulletin 811 Table S3

^d Soils in the poorly drained group were not rated for alfalfa and are shown with a zero "0".

Soils data provided by USDA and NRCS. Soils data provided by University of Illinois at Champaign-Urbana.

*c: Using Capabilities Class Dominant Condition Aggregation Method