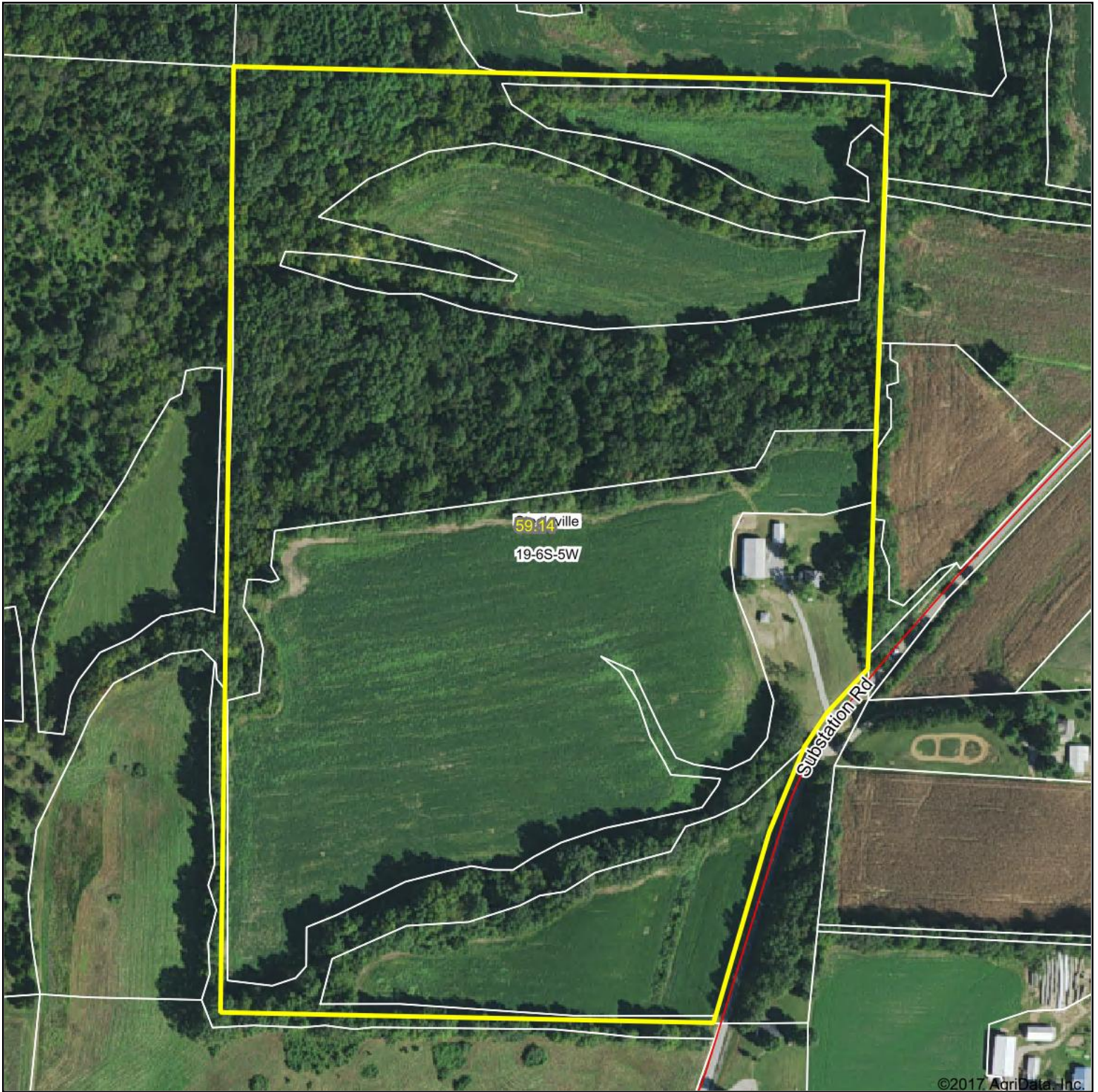


Aerial Map



©2017, AgriData, Inc.

map center: 37° 59' 23.69, -89° 41' 52.8

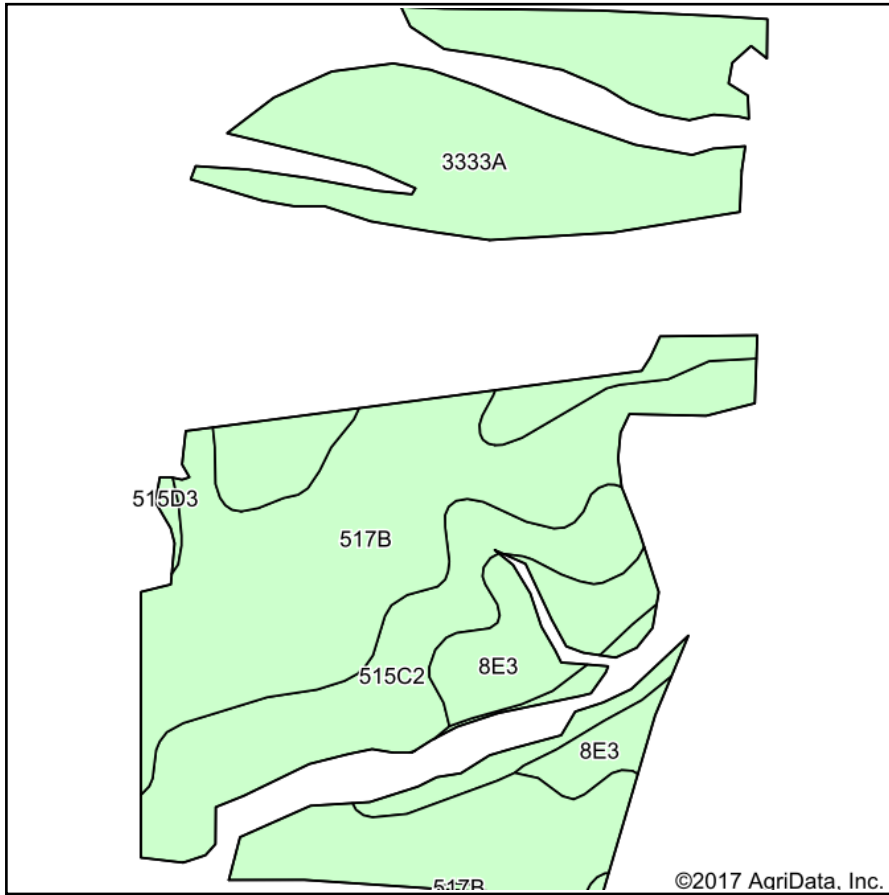


19-6S-5W
Randolph County
Illinois

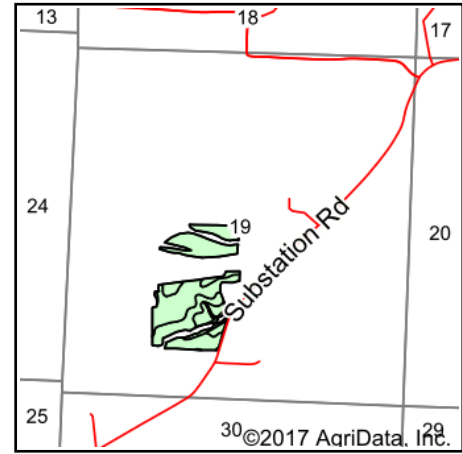


10/1/2017

Soils Map



Soils data provided by USDA and NRCS.



State: **Illinois**
 County: **Randolph**
 Location: **19-6S-5W**
 Township: **Steeleville**
 Acres: **34.37**
 Date: **10/1/2017**



Maps Provided By:



© AgriData, Inc. 2017

www.AgriDataInc.com



Area Symbol: IL157, Soil Area Version: 10

Code	Soil Description	Acres	Percent of field	Il. State Productivity Index Legend	Corn Bu/A	Soybeans Bu/A	Wheat Bu/A	Crop productivity index for optimum management
3333A	Wakeland silt loam, 0 to 2 percent slopes, frequently flooded	10.16	29.6%		174	56	68	128
**517B	Marine silt loam, 2 to 5 percent slopes	10.04	29.2%		**143	**45	**55	**103
**515C2	Bunkum silt loam, 5 to 10 percent slopes, eroded	9.00	26.2%		**136	**47	**52	**102
**8E3	Hickory clay loam, 18 to 25 percent slopes, severely eroded	5.04	14.7%		**82	**28	**33	**63
**515D3	Bunkum silty clay loam, 10 to 18 percent slopes, severely eroded	0.13	0.4%		**118	**41	**45	**89
Weighted Average					141.3	46.3	54.8	104.2

Table: Optimum Crop Productivity Ratings for Illinois Soil by K.R. Olson and J.M. Lang, Office of Research, ACES, University of Illinois at Champaign-Urbana. Version: 1/2/2012 Amended Table S2 B811

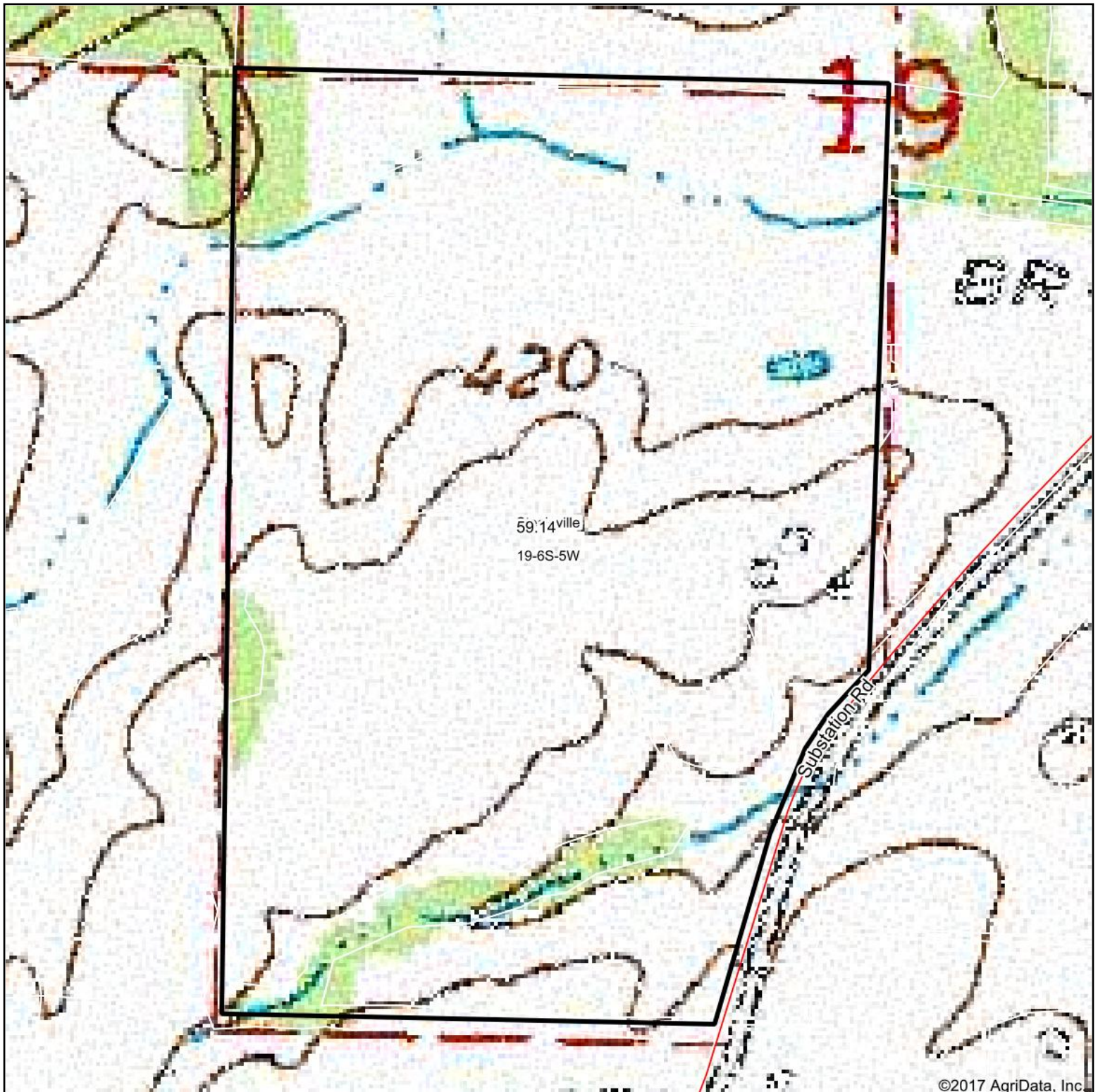
Crop yields and productivity indices for optimum management (B811) are maintained at the following NRES web site:

<https://www.ideals.illinois.edu/handle/2142/1027/>

** Indexes adjusted for slope and erosion according to Bulletin 811 Table S3

Soils data provided by USDA and NRCS. Soils data provided by University of Illinois at Champaign-Urbana.

Topography Map

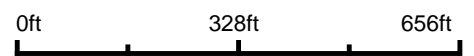


59.14ville
19-6S-5W

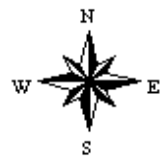
Substation Rd

©2017 AgriData, Inc.

map center: 37° 59' 23.69, -89° 41' 52.8



19-6S-5W
Randolph County
Illinois



Maps Provided By:
 **surety**
CUSTOMIZED ONLINE MAPPING
© AgriData, Inc. 2017 www.AgriDataInc.com

10/1/2017