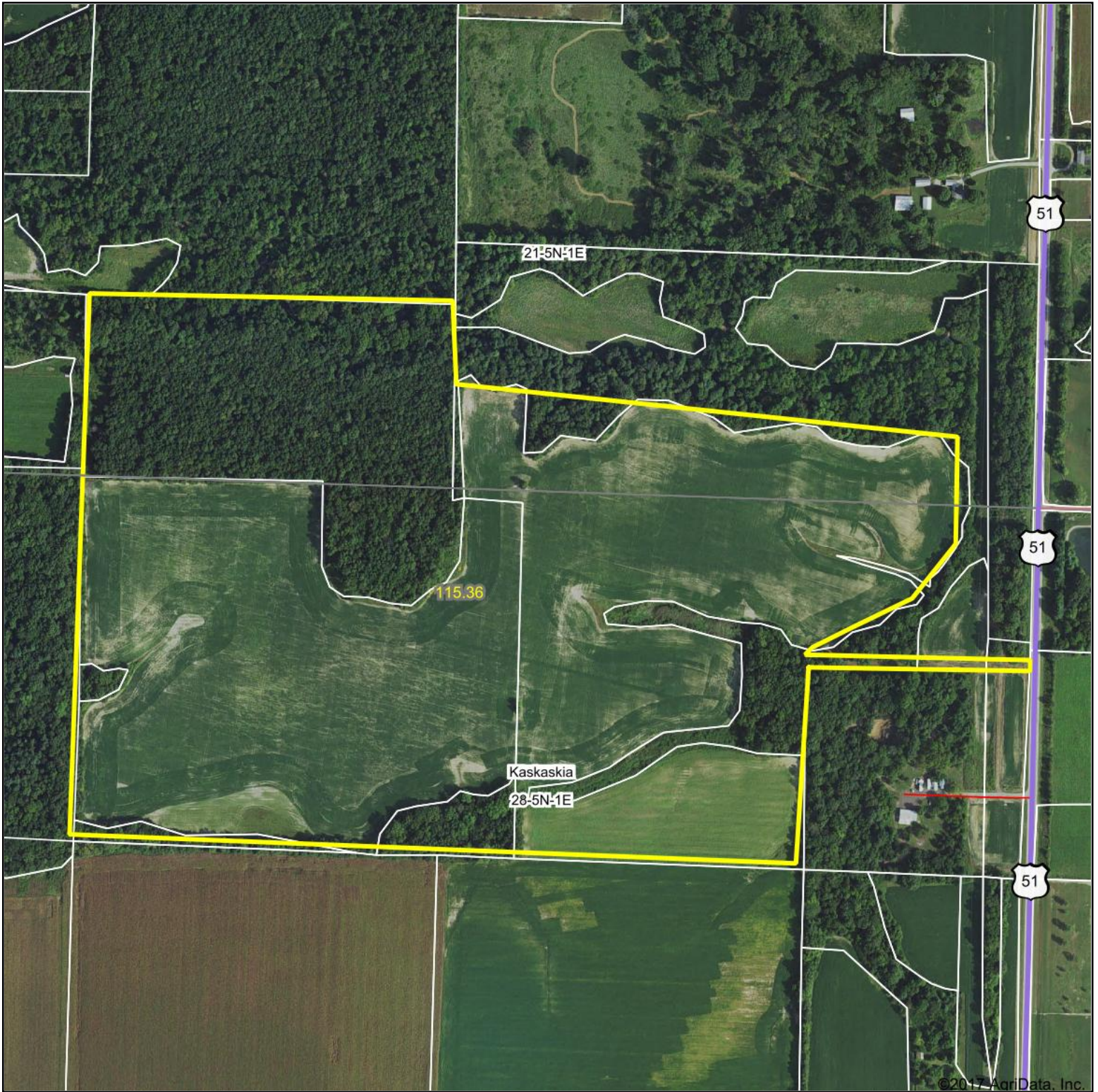


# Aerial Map



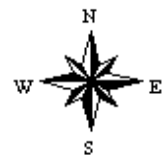
©2017 AgriData, Inc.



map center: 38° 51' 7.94, -89° 5' 38.73



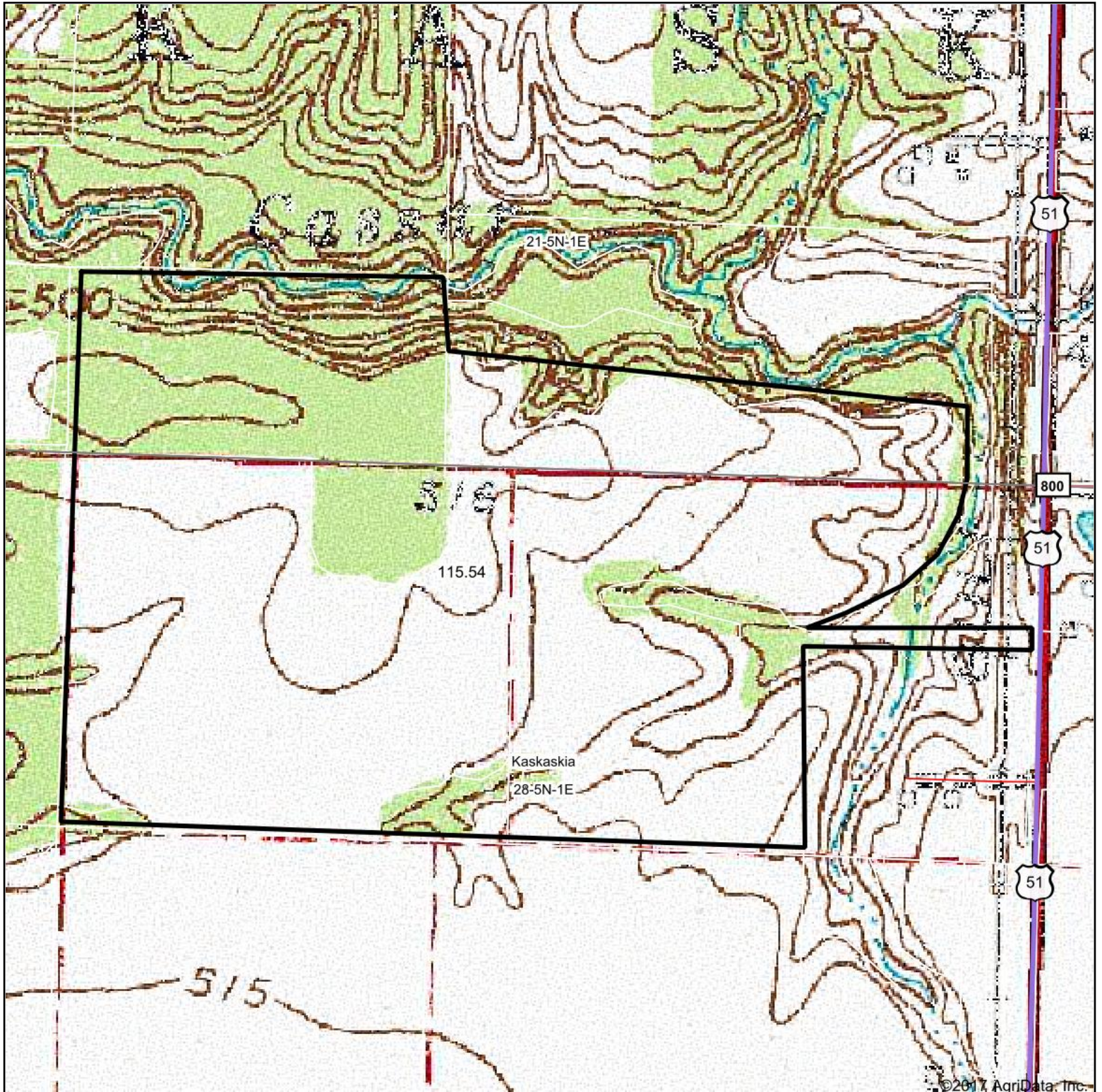
**28-5N-1E**  
**Fayette County**  
**Illinois**



10/20/2017



# Topography Map



map center: 38° 51' 7.18, -89° 5' 38.36

0ft 545ft 1089ft



Maps Provided By:



© AgriData, Inc. 2017

www.AgriDataInc.com

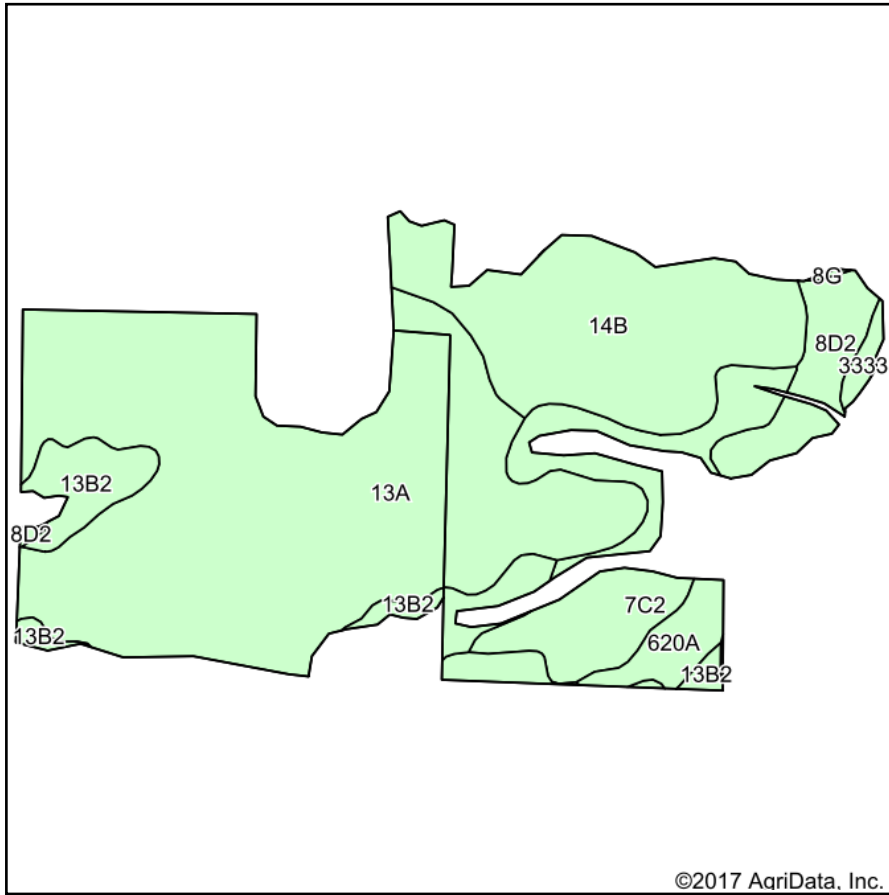
28-5N-1E  
Fayette County  
Illinois



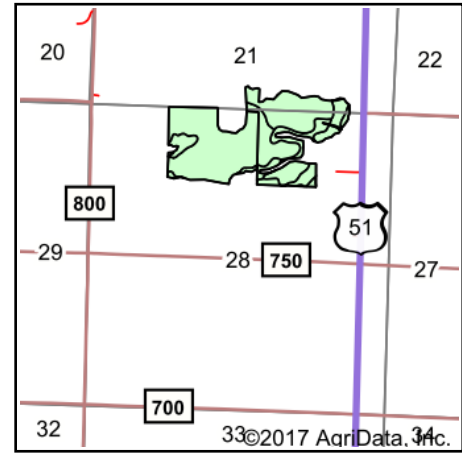
10/27/2017



# Soils Map



Soils data provided by USDA and NRCS.



State: **Illinois**  
 County: **Fayette**  
 Location: **28-5N-1E**  
 Township: **Kaskaskia**  
 Acres: **81.83**  
 Date: **10/20/2017**



## Area Symbol: IL051, Soil Area Version: 12

Code	Soil Description	Acres	Percent of field	Il. State Productivity Index Legend	Corn Bu/A	Soybeans Bu/A	Wheat Bu/A	Grass-legume e hay, T/A	Crop productivity index for optimum management
13A	Bluford silt loam, 0 to 2 percent slopes	45.10	55.1%		136	44	55	3.39	101
**14B	Ava silt loam, 2 to 5 percent slopes	16.29	19.9%		**134	**44	**54	0.00	**99
**7C2	Atlas silt loam, 5 to 10 percent slopes, eroded	8.65	10.6%		**105	**37	**41	**3.16	**81
**13B2	Bluford silt loam, 2 to 5 percent slopes, eroded	5.03	6.1%		**129	**42	**52	**3.22	**96
**8D2	Hickory silt loam, 10 to 18 percent slopes, eroded	4.04	4.9%		**108	**36	**44	0.00	**82
620A	Darmstadt silt loam, 0 to 2 percent slopes	2.14	2.6%		118	43	44	3.64	93
3333	Wakeland silt loam, 0 to 2 percent slopes, frequently flooded	0.58	0.7%		174	56	68	5.14	128
<b>Weighted Average</b>					<b>130.3</b>	<b>42.8</b>	<b>52.4</b>	<b>2.53</b>	<b>97.2</b>

**Table: Optimum Crop Productivity Ratings for Illinois Soil by K.R. Olson and J.M. Lang, Office of Research, ACES, University of Illinois at Champaign-Urbana.** Version: 1/2/2012 Amended Table S2 B811

Crop yields and productivity indices for optimum management (B811) are maintained at the following NRES web site:

<https://www.ideals.illinois.edu/handle/2142/1027/>

\*\* Indexes adjusted for slope and erosion according to Bulletin 811 Table S3

e Soils in the well drained group were not rated for grass-legume and are shown with a zero "0".

Soils data provided by USDA and NRCS. Soils data provided by University of Illinois at Champaign-Urbana.

\*c: Using Capabilities Class Dominant Condition Aggregation Method