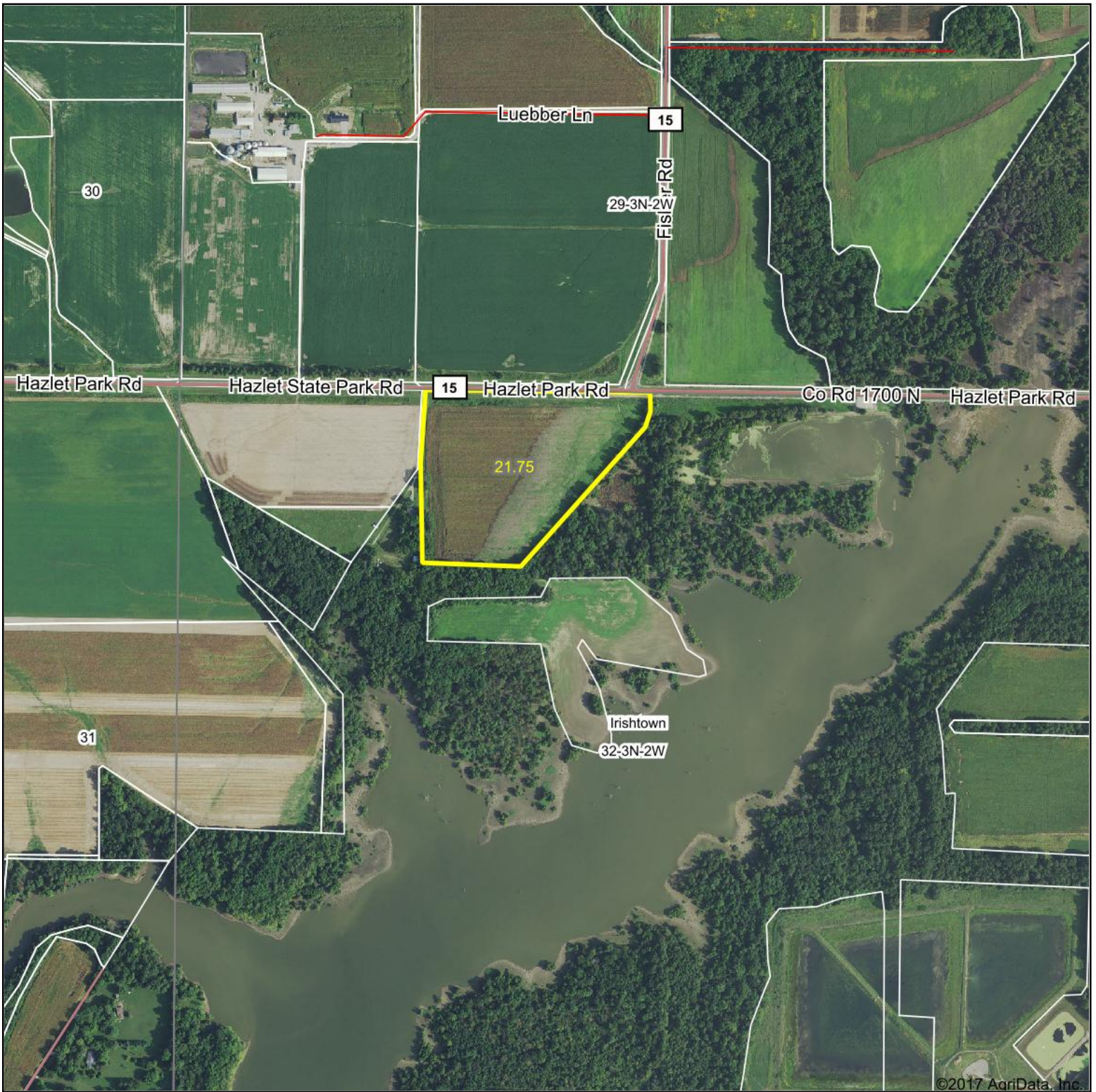


# Aerial Map



map center: 38° 39' 58.53, -89° 20' 22.62



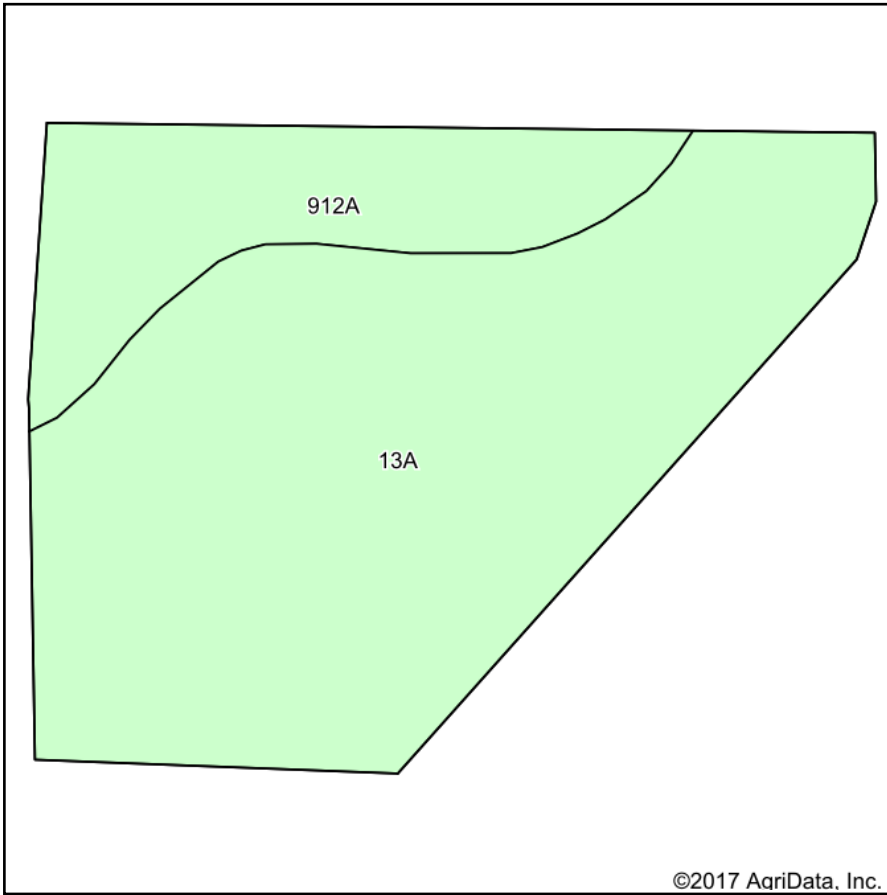
Maps Provided By:  
**surety**  
CUSTOMIZED ONLINE MAPPING  
© AgriData, Inc. 2017 www.AgriDataInc.com

**32-3N-2W**  
**Clinton County**  
**Illinois**



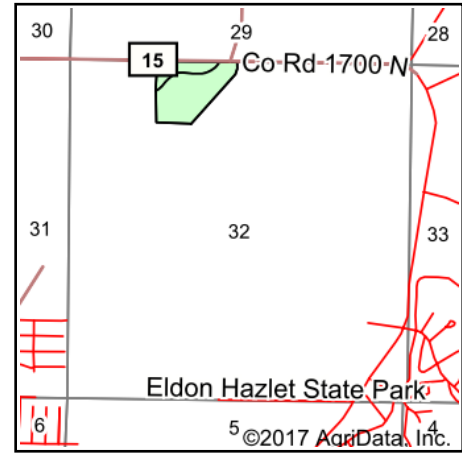
11/4/2017

# Soils Map



Soils data provided by USDA and NRCS.

©2017 AgriData, Inc.



State: **Illinois**  
 County: **Clinton**  
 Location: **32-3N-2W**  
 Township: **Irishtown**  
 Acres: **21.75**  
 Date: **11/4/2017**



Maps Provided By:



© AgriData, Inc. 2017

www.AgriDataInc.com



Area Symbol: IL027, Soil Area Version: 11

Code	Soil Description	Acres	Percent of field	Il. State Productivity Index Legend	Corn Bu/A	Soybeans Bu/A	Wheat Bu/A	Grass-legume e hay, T/A	Crop productivity index for optimum management
13A	Bluford silt loam, 0 to 2 percent slopes	16.93	77.8%		136	44	55	3.39	101
912A	Hoyleton-Darmstadt silt loams, 0 to 2 percent slopes	4.82	22.2%		134	45	52	4.24	103
<b>Weighted Average</b>					<b>135.6</b>	<b>44.2</b>	<b>54.3</b>	<b>3.58</b>	<b>101.4</b>

**Table: Optimum Crop Productivity Ratings for Illinois Soil by K.R. Olson and J.M. Lang, Office of Research, ACES, University of Illinois at Champaign-Urbana.** Version: 1/2/2012 Amended Table S2 B811

Crop yields and productivity indices for optimum management (B811) are maintained at the following NRES web site:

<https://www.ideals.illinois.edu/handle/2142/1027/>

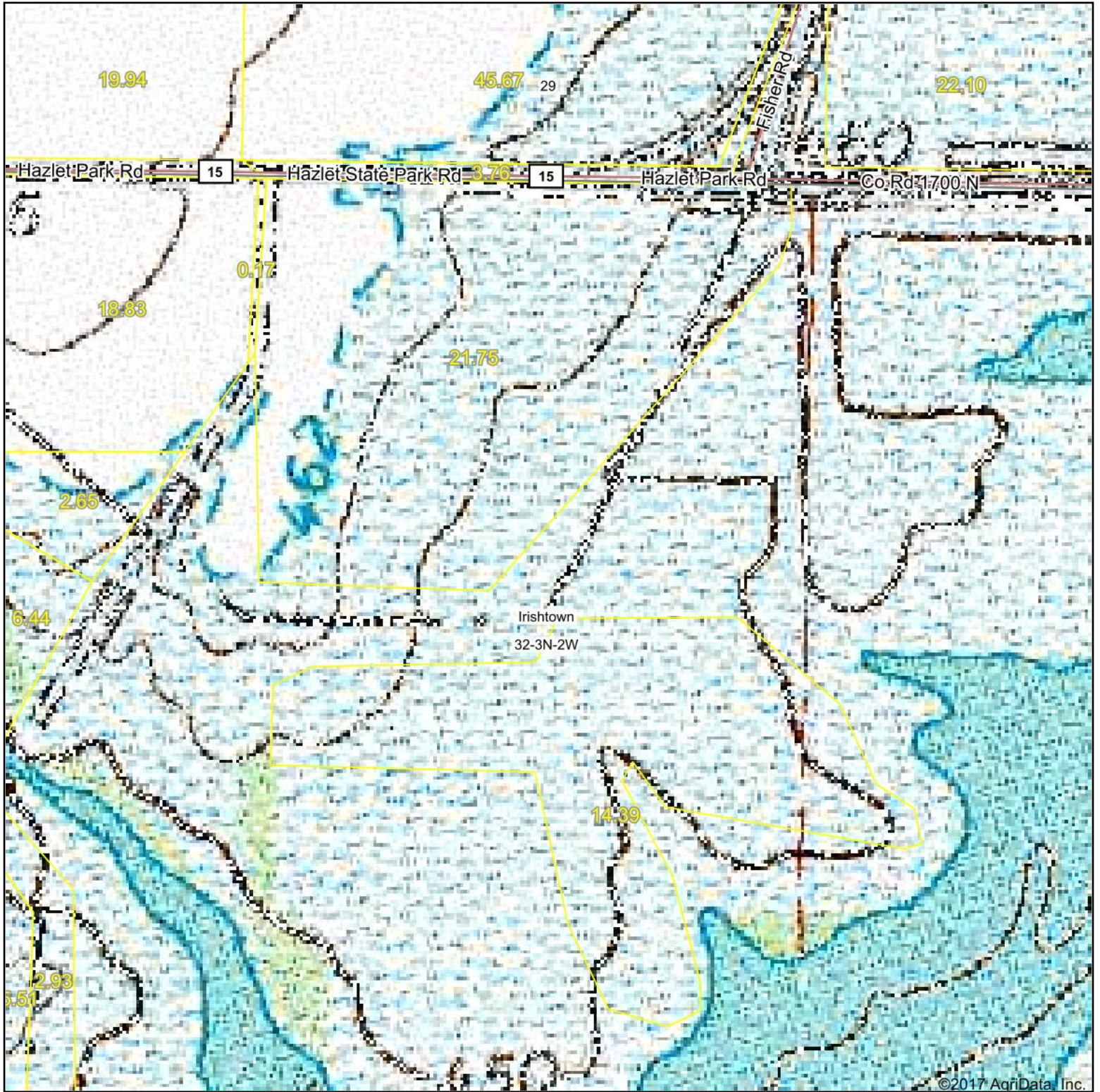
\*\* Indexes adjusted for slope and erosion according to Bulletin 811 Table S3

e Soils in the well drained group were not rated for grass-legume and are shown with a zero "0".

Soils data provided by USDA and NRCS. Soils data provided by University of Illinois at Champaign-Urbana.

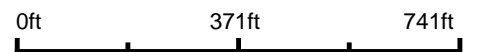
\*c: Using Capabilities Class Dominant Condition Aggregation Method

# Topography Map



©2017 AgriData, Inc.

map center: 38° 39' 58.53, -89° 20' 22.62



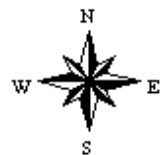
Maps Provided By:



© AgriData, Inc. 2017

www.AgriDataInc.com

**32-3N-2W**  
**Clinton County**  
**Illinois**



11/4/2017