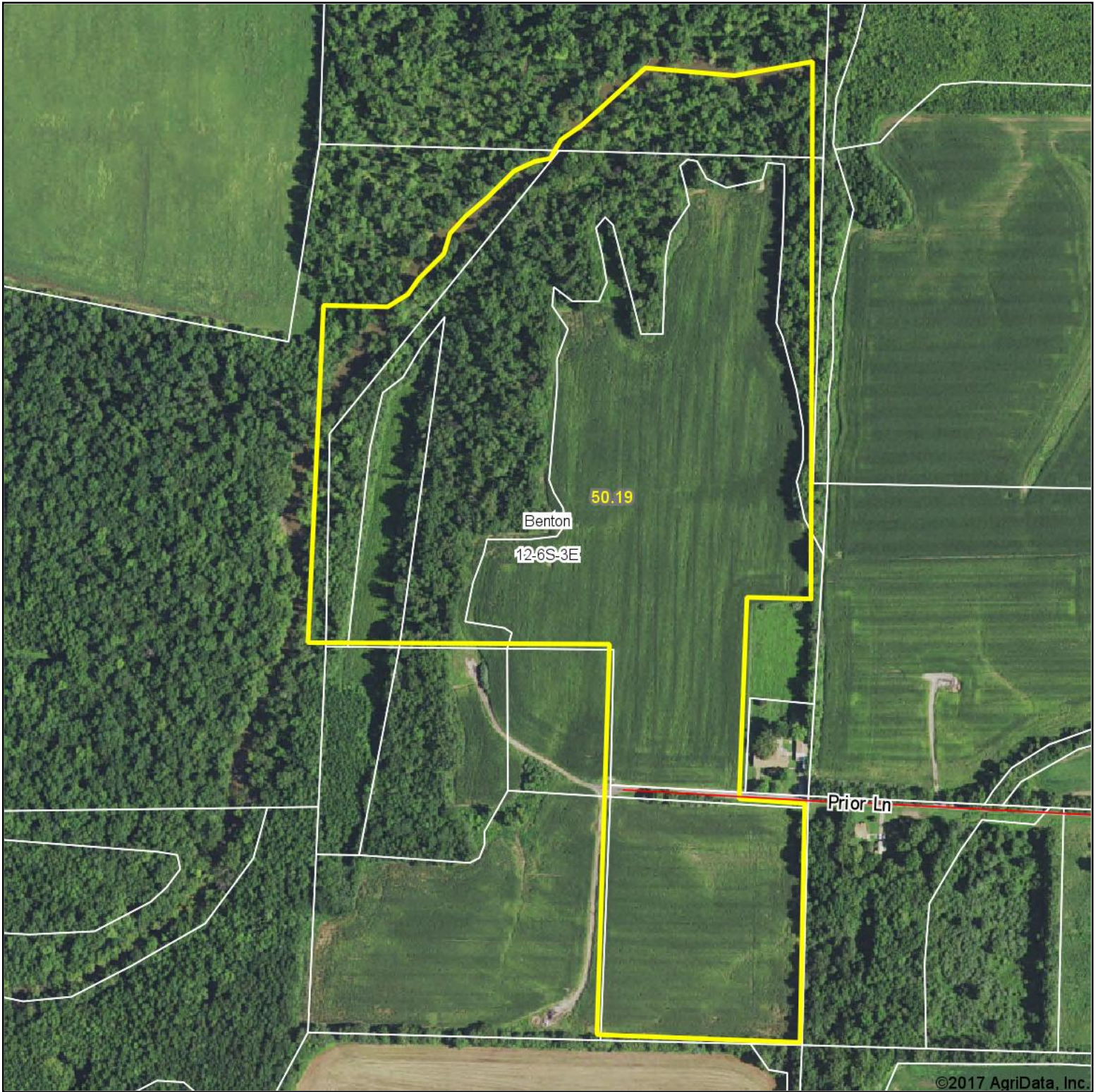
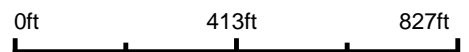


# Aerial Map



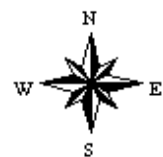
©2017 AgriData, Inc.

map center: 38° 1' 3.96, -88° 49' 25.02



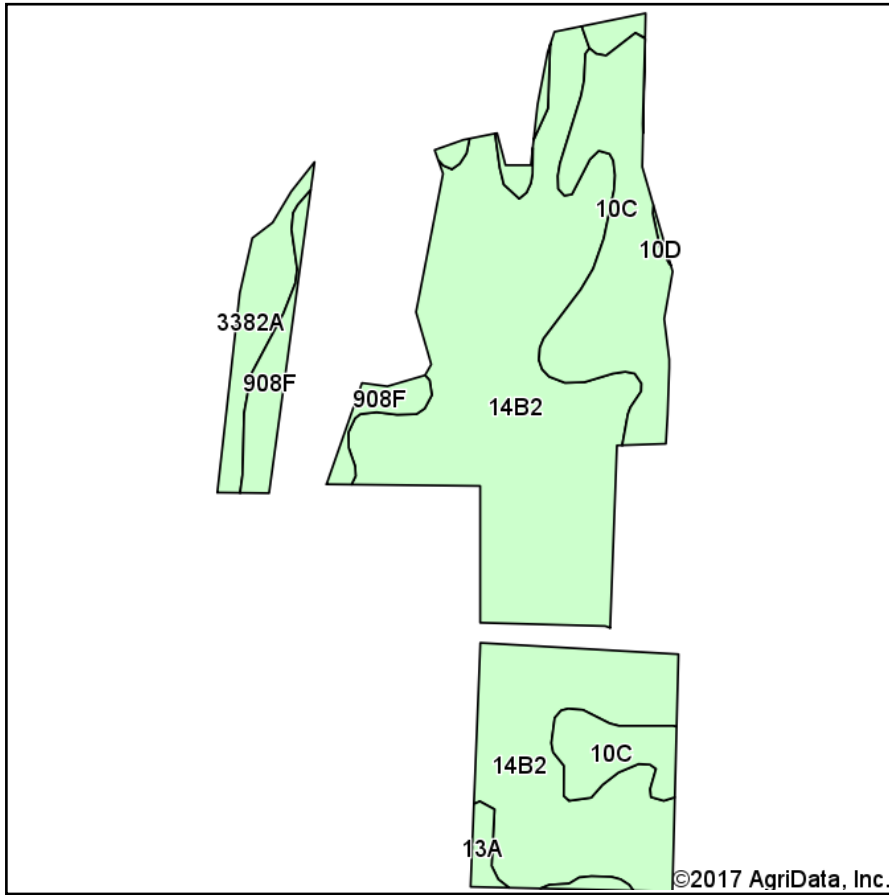
Maps Provided By:  
**surety**  
CUSTOMIZED ONLINE MAPPING  
© AgriData, Inc. 2017 www.AgriDataInc.com

**12-6S-3E**  
**Franklin County**  
**Illinois**

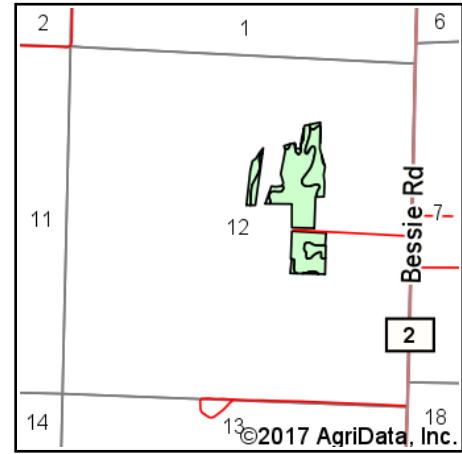


5/22/2017

# Soils Map



Soils data provided by USDA and NRCS.



State: **Illinois**  
 County: **Franklin**  
 Location: **12-6S-3E**  
 Township: **Benton**  
 Acres: **29.62**  
 Date: **5/22/2017**



**Area Symbol: IL055, Soil Area Version: 10**

Code	Soil Description	Acres	Percent of field	Il. State Productivity Index Legend	Corn Bu/A	Soybeans Bu/A	Wheat Bu/A	Crop productivity index for optimum management
**14B2	Ava silt loam, 2 to 5 percent slopes, eroded	19.71	66.5%		**126	**41	**51	**93
**10C	Plumfield silty clay loam, 5 to 10 percent slopes	5.79	19.5%		**103	**34	**39	**78
**908F	Hickory-Kell silt loams, 18 to 35 percent slopes	2.15	7.3%		**87	**29	**34	**67
3382A	Belknap silt loam, 0 to 2 percent slopes, frequently flooded	1.54	5.2%		156	52	63	117
13A	Bluford silt loam, 0 to 2 percent slopes	0.43	1.5%		136	44	55	101
<b>Weighted Average</b>					<b>120.4</b>	<b>39.4</b>	<b>48.1</b>	<b>89.5</b>

**Table: Optimum Crop Productivity Ratings for Illinois Soil by K.R. Olson and J.M. Lang, Office of Research, ACES, University of Illinois at Champaign-Urbana.** Version: 1/2/2012 Amended Table S2 B811

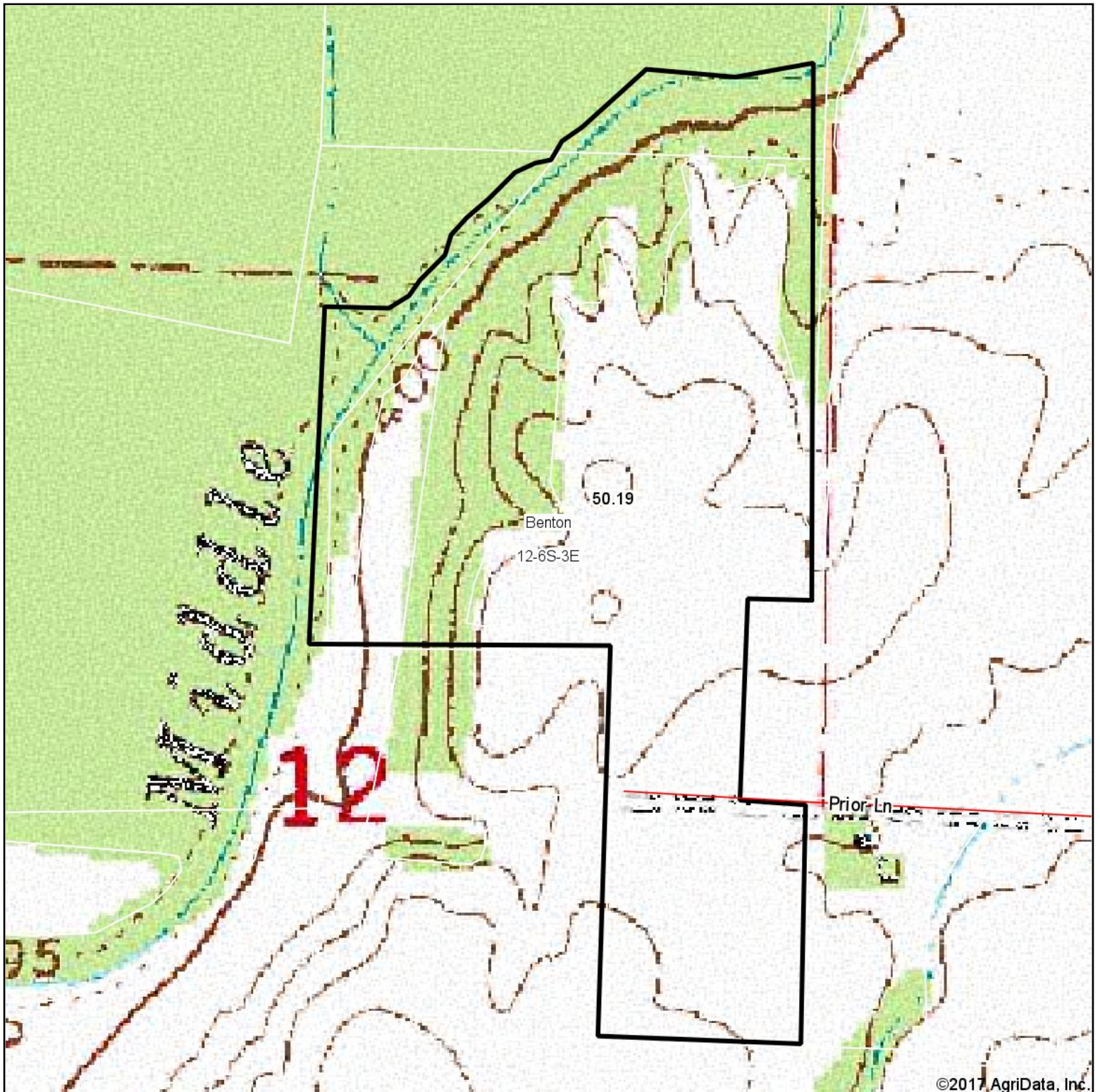
Crop yields and productivity indices for optimum management (B811) are maintained at the following NRES web site:

<https://www.ideals.illinois.edu/handle/2142/1027/>

\*\* Indexes adjusted for slope and erosion according to Bulletin 811 Table S3

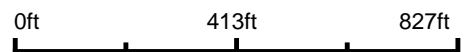
Soils data provided by USDA and NRCS. Soils data provided by University of Illinois at Champaign-Urbana.

# Topography Map



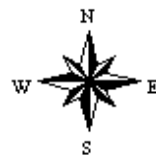
©2017, AgriData, Inc.

map center: 38° 1' 3.96, -88° 49' 25.02



Maps Provided By:  
**surety**  
CUSTOMIZED ONLINE MAPPING  
© AgriData, Inc. 2017      www.AgriDataInc.com

**12-6S-3E**  
**Franklin County**  
**Illinois**



5/22/2017