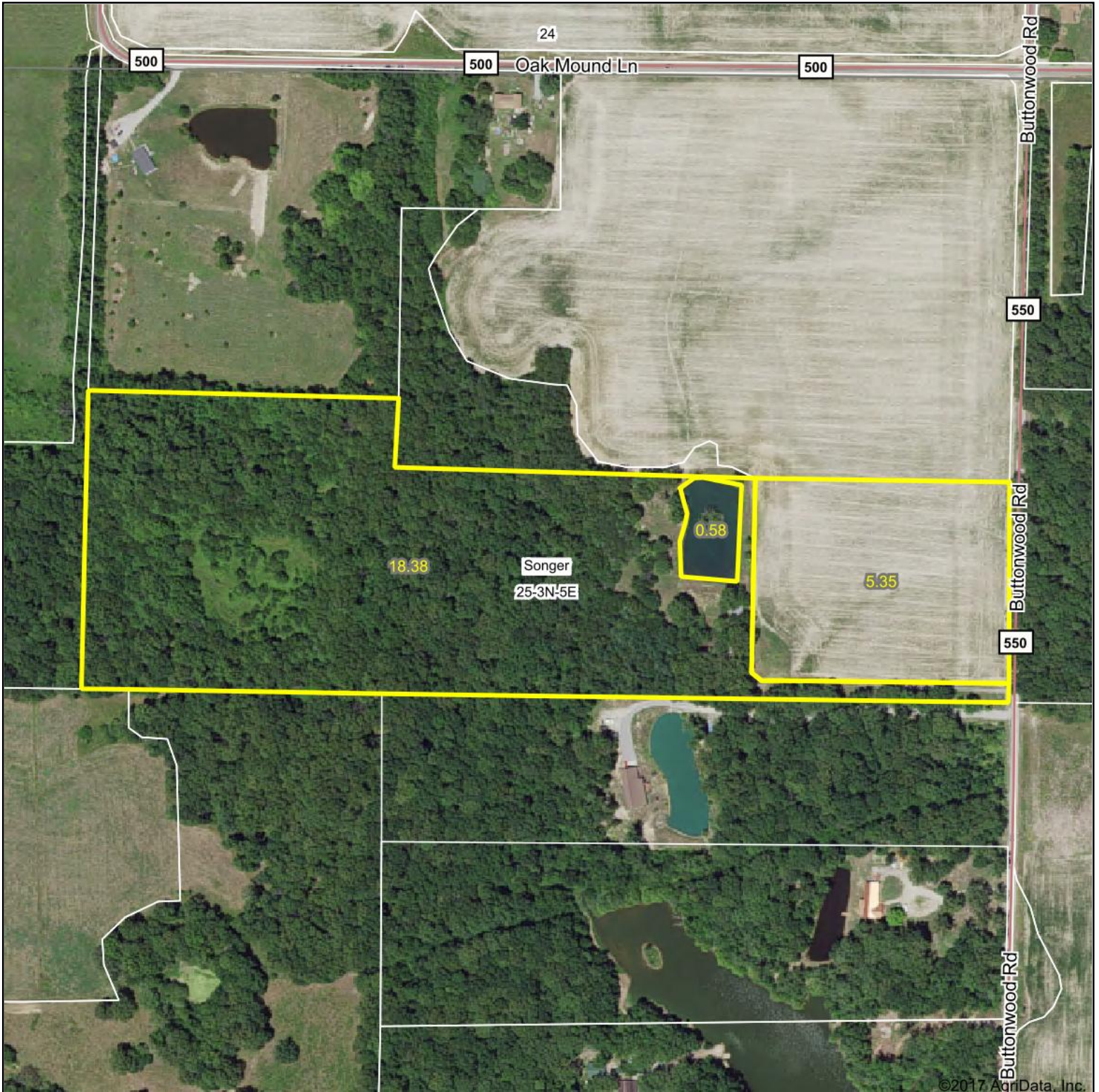
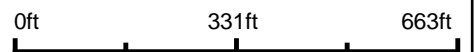


# Aerial Map



©2017 AgriData, Inc.

map center: 38° 40' 38.99, -88° 35' 47.43



Maps Provided By:



© AgriData, Inc. 2017

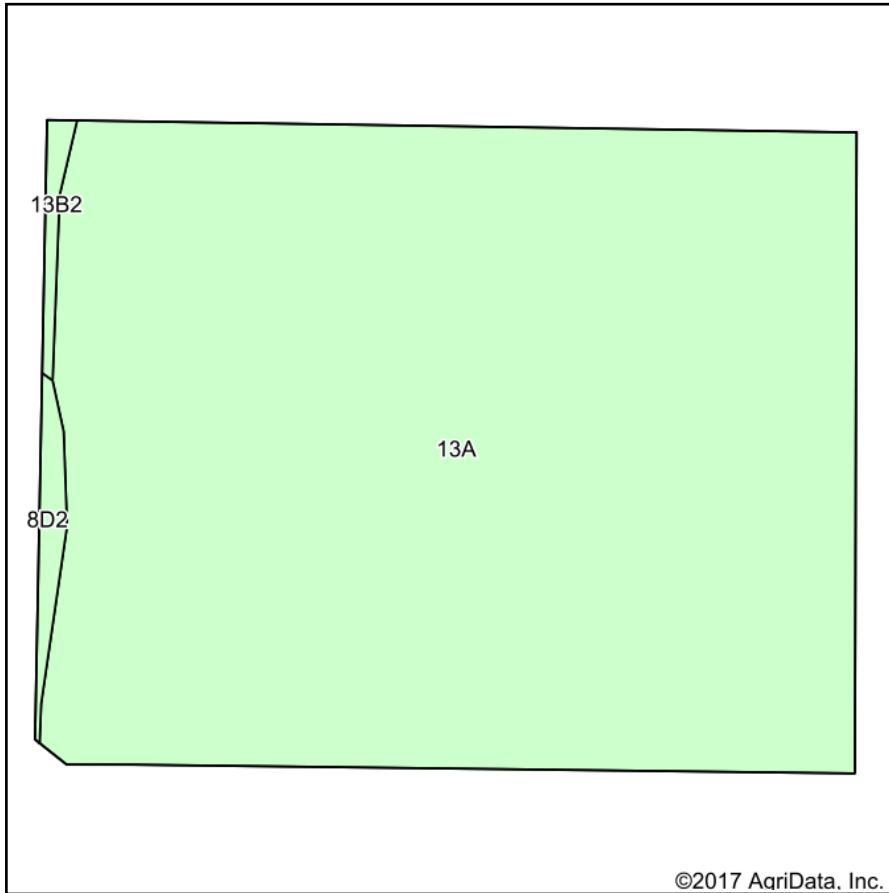
www.AgriDataInc.com

**25-3N-5E**  
**Clay County**  
**Illinois**



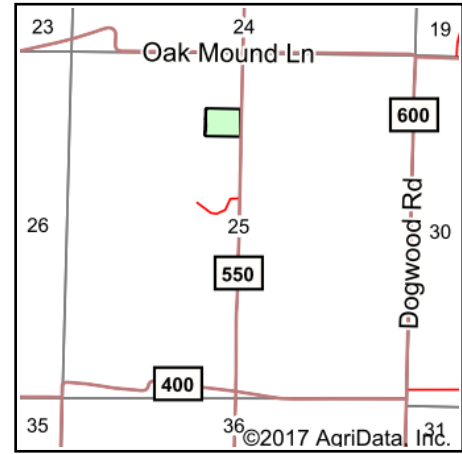
1/14/2018

# Soils Map



Soils data provided by USDA and NRCS.

©2017 AgriData, Inc.



State: **Illinois**  
 County: **Clay**  
 Location: **25-3N-5E**  
 Township: **Songer**  
 Acres: **5.35**  
 Date: **1/14/2018**



Maps Provided By:



© AgriData, Inc. 2017

www.AgriDataInc.com



**Area Symbol: IL025, Soil Area Version: 12**

Code	Soil Description	Acres	Percent of field	Il. State Productivity Index Legend	Corn Bu/A	Soybeans Bu/A	Wheat Bu/A	Grass-legume e hay, T/A	Crop productivity index for optimum management
13A	Bluford silt loam, 0 to 2 percent slopes	5.28	98.7%		136	44	55	3.39	101
**8D2	Hickory silt loam, 10 to 18 percent slopes, eroded	0.07	1.3%		**108	**36	**44	0.00	**82
<b>Weighted Average</b>					<b>135.6</b>	<b>43.9</b>	<b>54.9</b>	<b>3.35</b>	<b>100.8</b>

**Table: Optimum Crop Productivity Ratings for Illinois Soil by K.R. Olson and J.M. Lang, Office of Research, ACES, University of Illinois at Champaign-Urbana.** Version: 1/2/2012 Amended Table S2 B811

Crop yields and productivity indices for optimum management (B811) are maintained at the following NRES web site:

<https://www.ideals.illinois.edu/handle/2142/1027/>

\*\* Indexes adjusted for slope and erosion according to Bulletin 811 Table S3

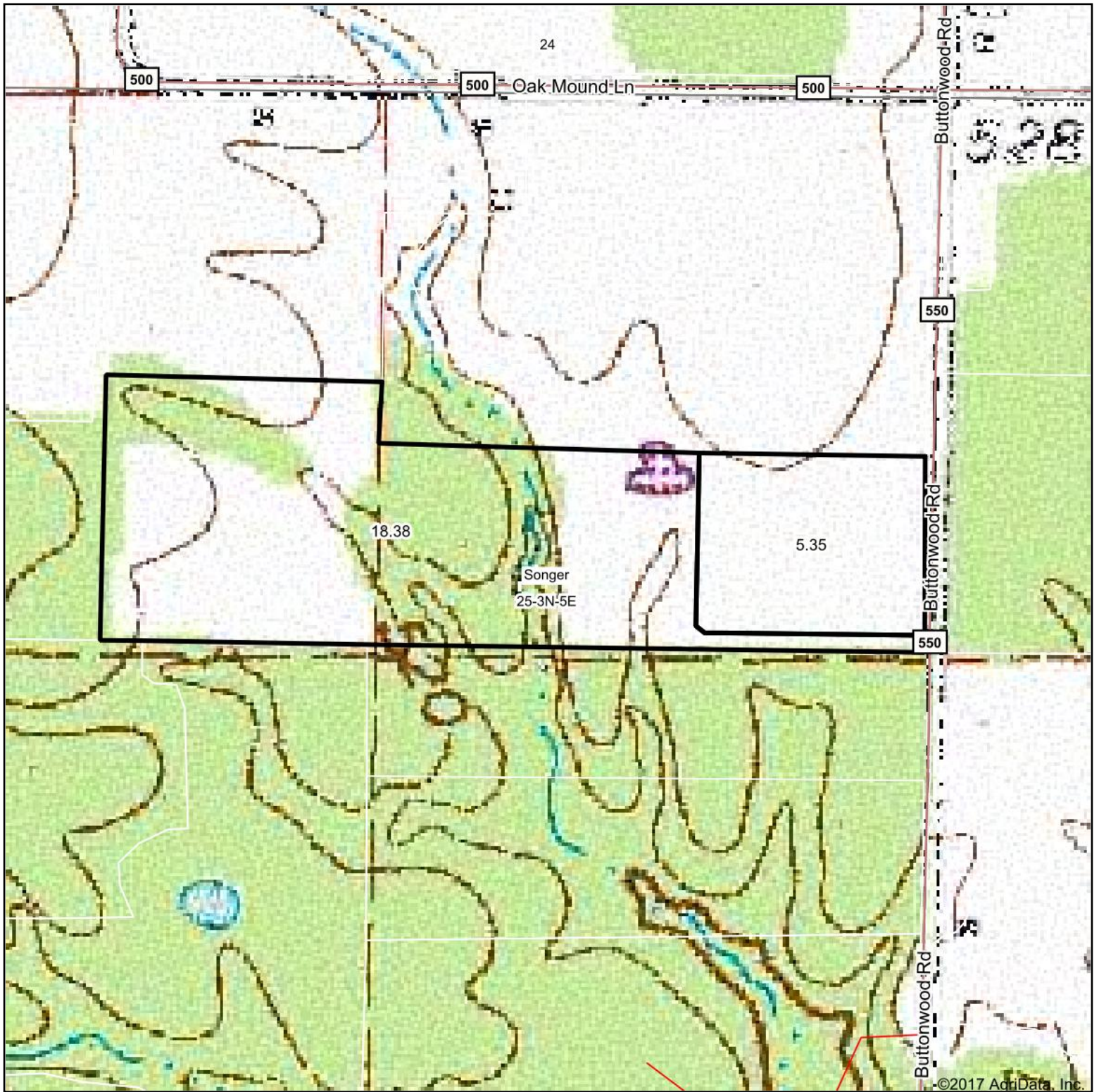
e Soils in the well drained group were not rated for grass-legume and are shown with a zero "0".

Soils data provided by USDA and NRCS. Soils data provided by University of Illinois at Champaign-Urbana.

\*c: Using Capabilities Class Dominant Condition Aggregation Method

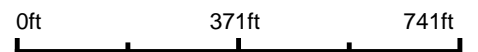


# Topography Map



©2017 AgriData, Inc.

map center: 38° 40' 38.23, -88° 35' 46.41



Maps Provided By:



© AgriData, Inc. 2017

www.AgriDataInc.com

**25-3N-5E**  
**Clay County**  
**Illinois**



1/14/2018