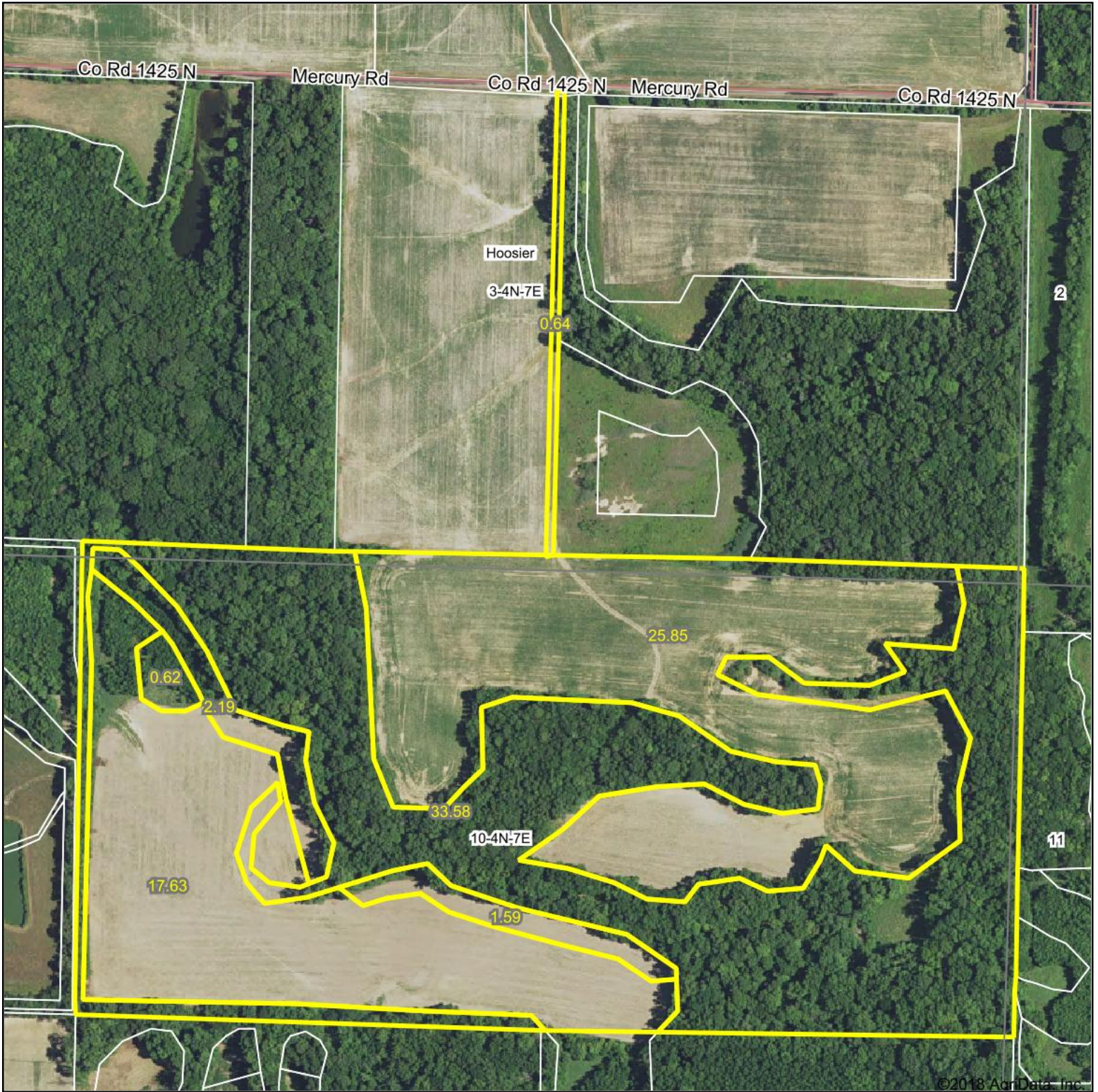


Aerial Map



map center: 38° 48' 32.72, -88° 24' 14.52

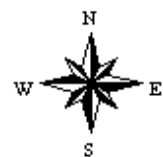


Maps Provided By:



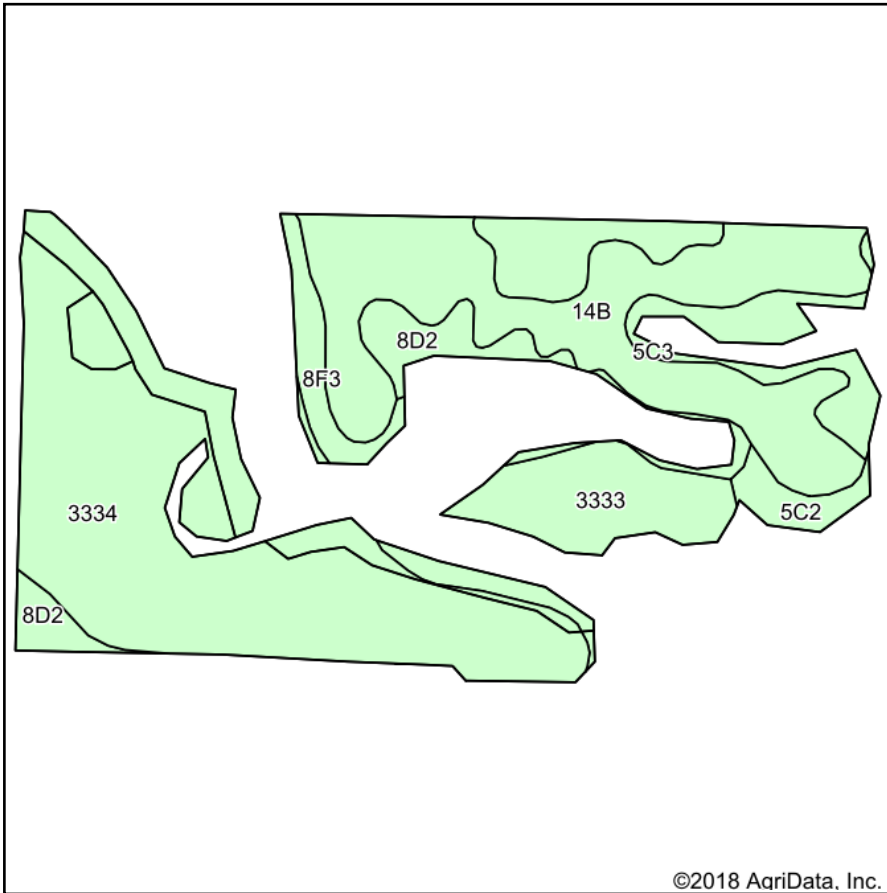
© AgriData, Inc. 2018 www.AgriDataInc.com

3-4N-7E
Clay County
Illinois



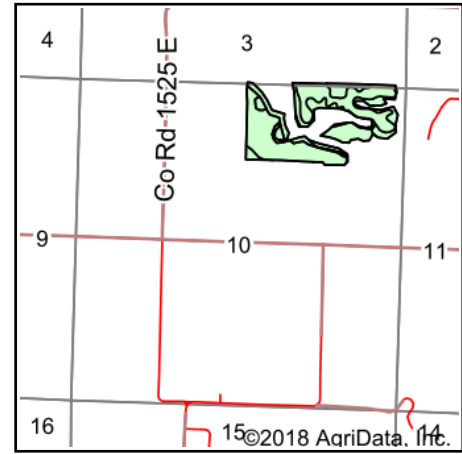
9/19/2018

Soils Map



Soils data provided by USDA and NRCS.

©2018 AgriData, Inc.



State: **Illinois**
 County: **Clay**
 Location: **10-4N-7E**
 Township: **Hoosier**
 Acres: **47.88**
 Date: **9/14/2018**



Maps Provided By:



© Agridata, Inc. 2018

www.AgridataInc.com



Area Symbol: IL025, Soil Area Version: 12

Code	Soil Description	Acres	Percent of field	Il. State Productivity Index Legend	Corn Bu/A	Soybeans Bu/A	Wheat Bu/A	Grass-legume e hay, T/A	Crop productivity index for optimum management
3334	Birds silt loam, frequently flooded	20.49	42.8%		157	51	61	0.00	117
**14B	Ava silt loam, 2 to 5 percent slopes	12.55	26.2%		**134	**44	**54	0.00	**99
3333	Wakeland silt loam, 0 to 2 percent slopes, frequently flooded	4.80	10.0%		174	56	68	5.14	128
**5C3	Passport silty clay loam, 5 to 10 percent slopes, severely eroded	4.78	10.0%		**102	**33	**41	**3.25	**77
**8D2	Hickory silt loam, 10 to 18 percent slopes, eroded	2.77	5.8%		**108	**36	**44	0.00	**82
**8F3	Hickory clay loam, 18 to 35 percent slopes, severely eroded	1.46	3.0%		**71	**24	**29	0.00	**54
**5C2	Passport silt loam, 5 to 10 percent slopes, eroded	1.03	2.2%		**124	**41	**50	**3.95	**94
Weighted Average					141	46	55.7	0.92	105

Table: Optimum Crop Productivity Ratings for Illinois Soil by K.R. Olson and J.M. Lang, Office of Research, ACES, University of Illinois at Champaign-Urbana. Version: 1/2/2012 Amended Table S2 B811

Crop yields and productivity indices for optimum management (B811) are maintained at the following NRES web site: <http://soilproductivity.nres.illinois.edu/>

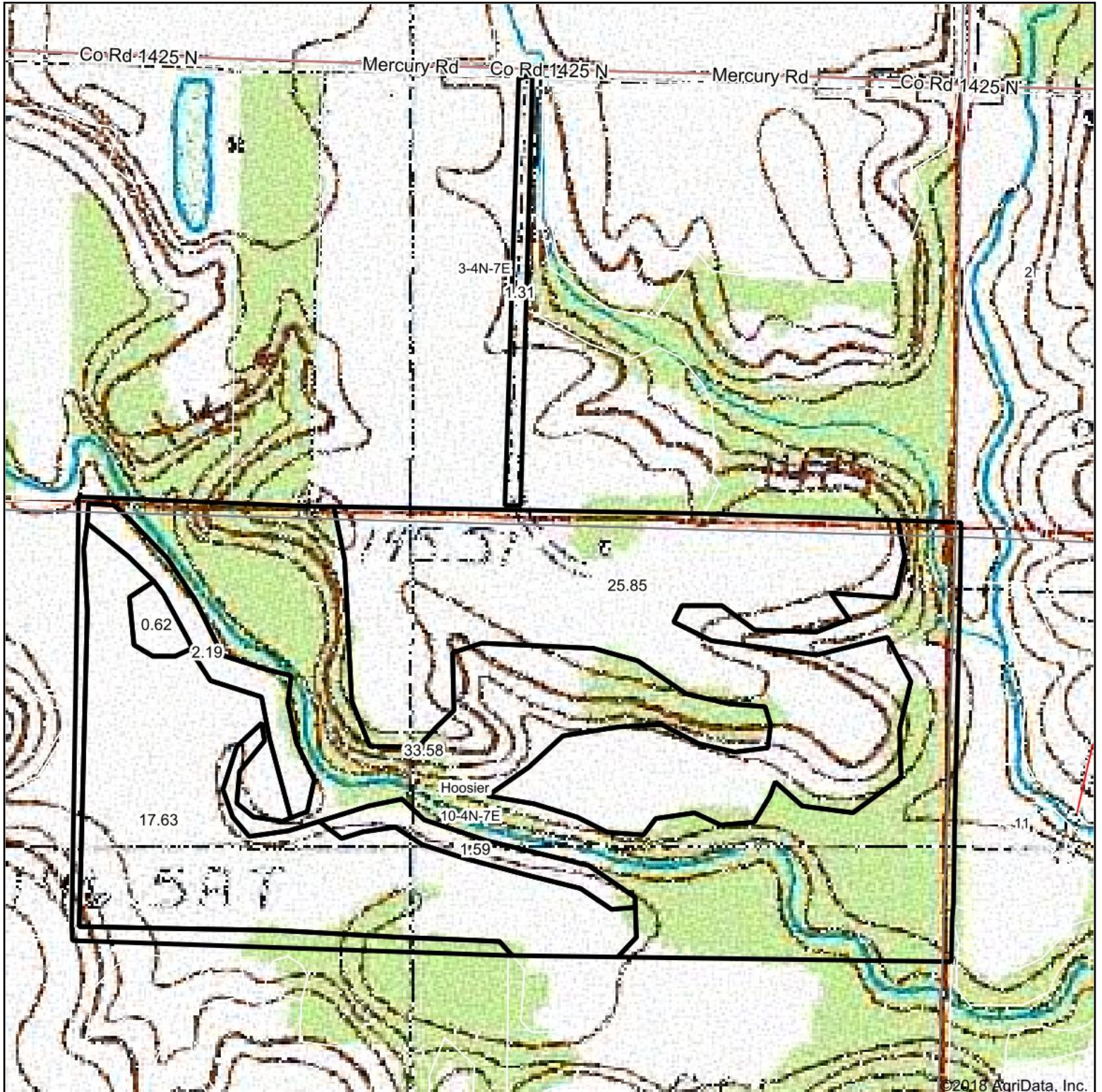
** Indexes adjusted for slope and erosion according to Bulletin 811 Table S3

e Soils in the well drained group were not rated for grass-legume and are shown with a zero "0".

Soils data provided by USDA and NRCS. Soils data provided by University of Illinois at Champaign-Urbana.

*c: Using Capabilities Class Dominant Condition Aggregation Method

Topography Map



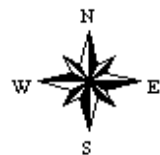
©2018 AgriData, Inc.

map center: 38° 48' 31.39, -88° 24' 13.16



Maps Provided By:
 surety
CUSTOMIZED ONLINE MAPPING
© AgriData, Inc. 2018 www.AgriDataInc.com

10-4N-7E
Clay County
Illinois



9/20/2018