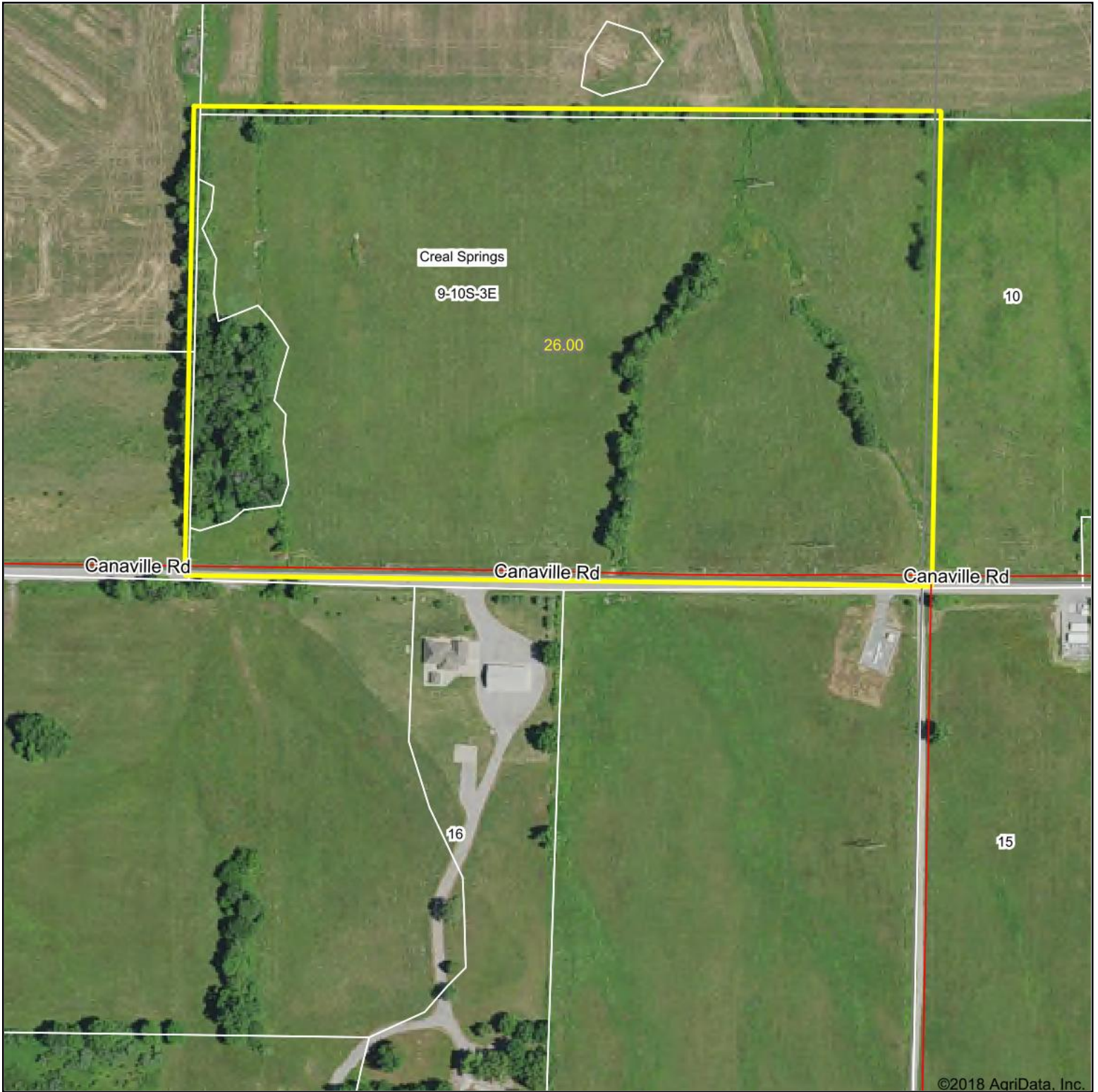
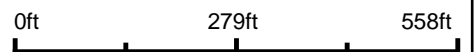


# Aerial Map



Brett Berger, ARA

map center: 37.656151, -88.876324



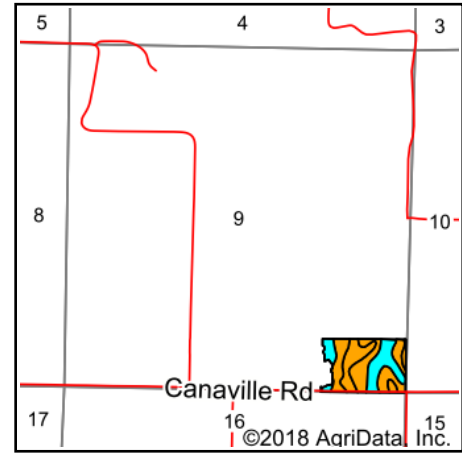
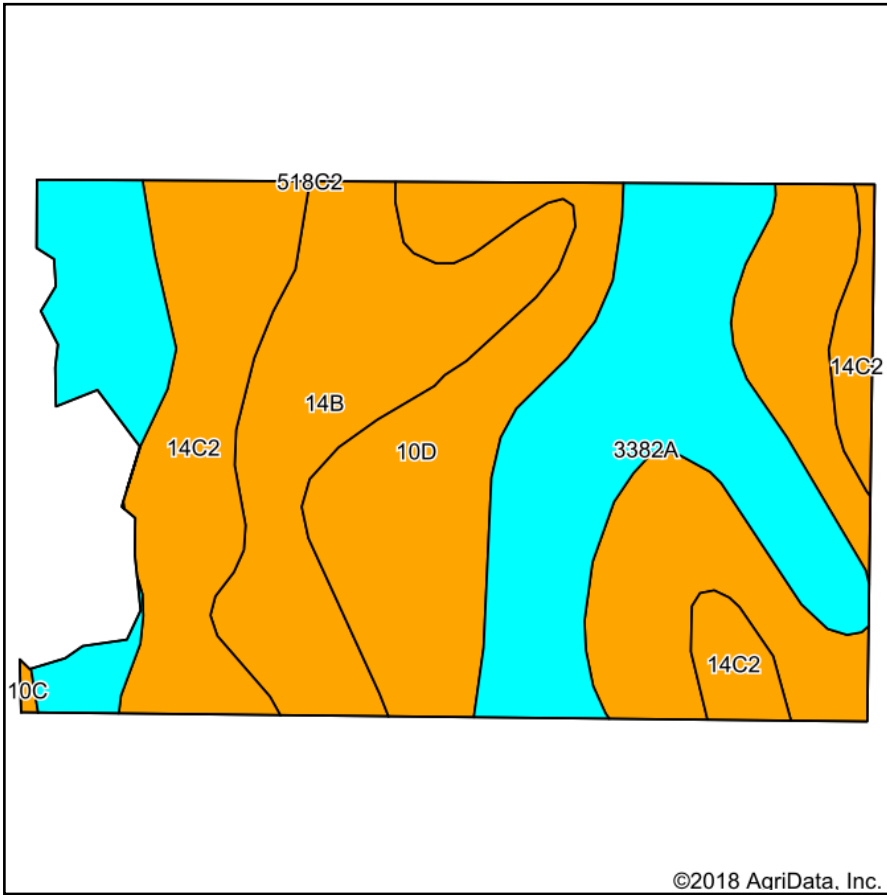
Maps Provided By:  
  
© Agridata, Inc. 2018 [www.AgridataInc.com](http://www.AgridataInc.com)

**9-10S-3E**  
**Williamson County**  
**Illinois**

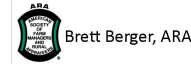


7/23/2018

# Soils Map



State: **Illinois**  
 County: **Williamson**  
 Location: **9-10S-3E**  
 Township: **Creal Springs**  
 Acres: **23**  
 Date: **9/24/2018**



**Area Symbol: IL199, Soil Area Version: 12**

Code	Soil Description	Acres	Percent of field	II. State Productivity Index Legend	Corn Bu/A	Soybeans Bu/A	Wheat Bu/A	Crop productivity index for optimum management
**10D	Plumfield silty clay loam, 10 to 18 percent slopes	7.84	34.1%		**97	**32	**37	**74
3382A	Belknap silt loam, 0 to 2 percent slopes, frequently flooded	6.85	29.8%		156	52	63	117
**14B	Ava silt loam, 2 to 5 percent slopes	4.18	18.2%		**134	**44	**54	**99
**14C2	Ava silt loam, 5 to 10 percent slopes, eroded	4.13	18.0%		**122	**40	**50	**90
<b>Weighted Average</b>					<b>125.8</b>	<b>41.6</b>	<b>50.2</b>	<b>94.2</b>

**Table: Optimum Crop Productivity Ratings for Illinois Soil by K.R. Olson and J.M. Lang, Office of Research, ACES, University of Illinois at Champaign-Urbana.** Version: 1/2/2012 Amended Table S2 B811

Crop yields and productivity indices for optimum management (B811) are maintained at the following NRES web site: <http://soilproductivity.nres.illinois.edu/>

\*\* Indexes adjusted for slope and erosion according to Bulletin 811 Table S3

Soils data provided by USDA and NRCS. Soils data provided by University of Illinois at Champaign-Urbana.

\*c: Using Capabilities Class Dominant Condition Aggregation Method