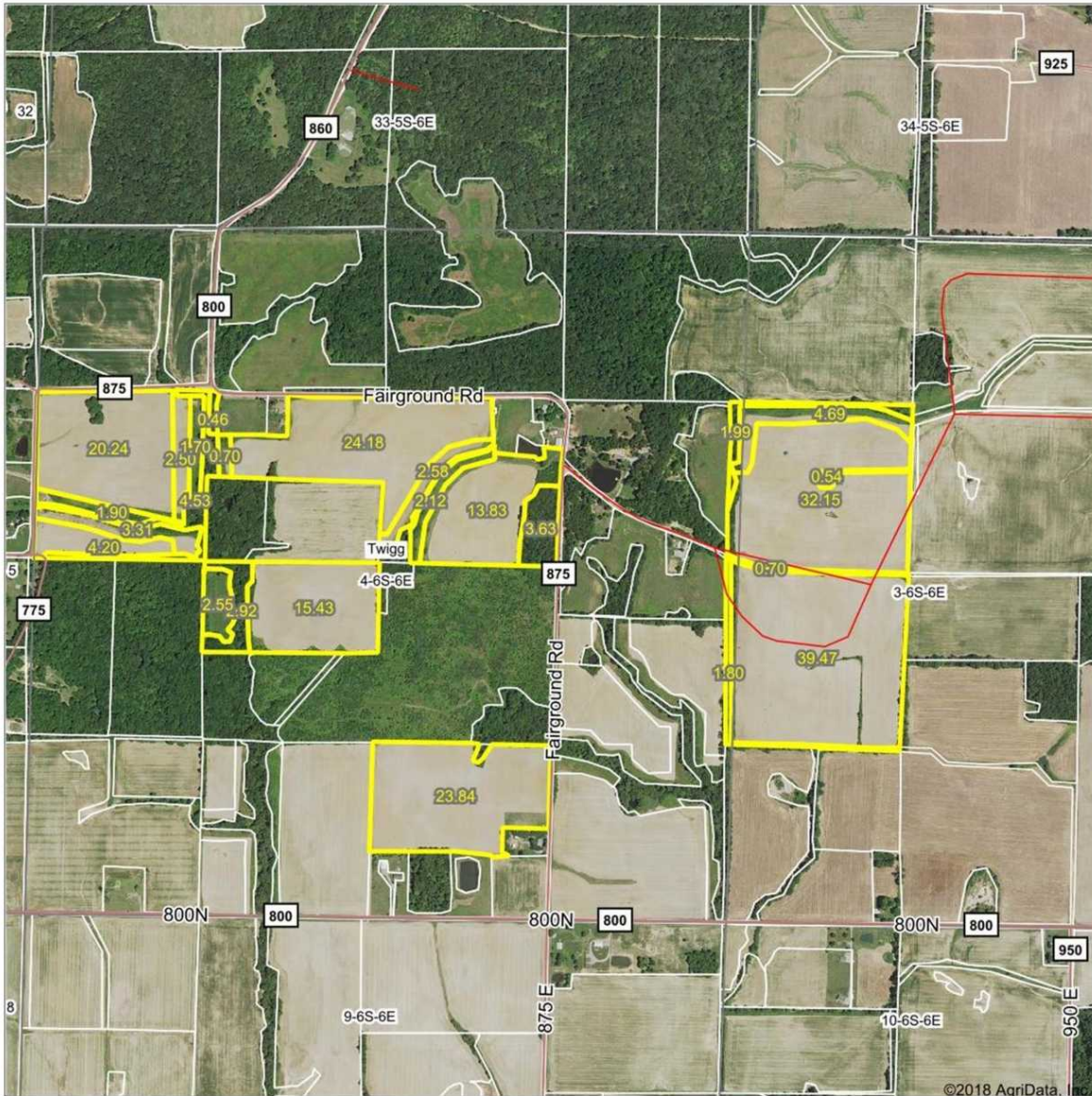


Aerial Photograph

Aerial Map



Brett Berger, ARA

map center: 38.031994, -88.544653

0ft 1181ft 2362ft



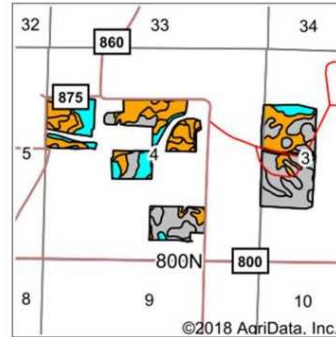
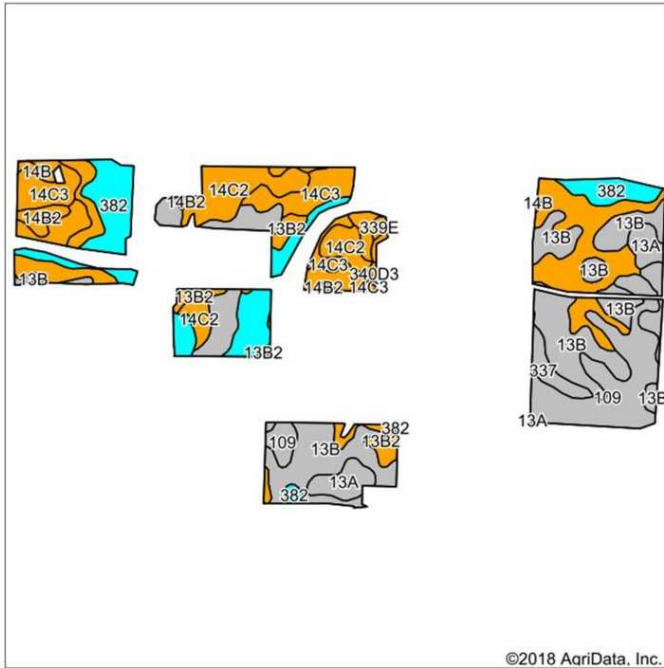
4-6S-6E
Hamilton County
Illinois



Field borders provided by Farm Service Agency as of 5/21/2008. Soils data provided by University of Illinois at Champaign-Urbana.

Cropland Soils Map

Soils Map



State: **Illinois**
 County: **Hamilton**
 Location: **4-6S-6E**
 Township: **Twigg**
 Acres: **179.96**
 Date: **8/7/2018**



Soils data provided by USDA and NRCS.

©2018 AgriData, Inc.

Area Symbol: IL065, Soil Area Version: 12								
Code	Soil Description	Acres	Percent of field	Il. State Productivity Index Legend	Corn Bu/A	Soybeans Bu/A	Wheat Bu/A	Crop productivity index for optimum management
**13B	Bluford silt loam, 2 to 5 percent slopes	48.18	26.8%		**135	**44	**54	**100
**13B2	Bluford silt loam, 2 to 5 percent slopes, eroded	31.22	17.3%		**129	**42	**52	**96
382	Belknap silt loam, 0 to 2 percent slopes, occasionally flooded	25.52	14.2%		156	52	63	117
109	Racoon silt loam	21.95	12.2%		144	46	56	106
**14C2	Ava silt loam, 5 to 10 percent slopes, eroded	18.77	10.4%		**122	**40	**50	**90
**14C3	Ava silt loam, 5 to 10 percent slopes, severely eroded	13.67	7.6%		**100	**33	**41	**74
13A	Bluford silt loam, 0 to 2 percent slopes	6.83	3.8%		136	44	55	101
**14B	Ava silt loam, 2 to 5 percent slopes	4.38	2.4%		**134	**44	**54	**99
337	Creal silt loam	3.17	1.8%		151	47	59	110
**14B2	Ava silt loam, 2 to 5 percent slopes, eroded	2.68	1.5%		**126	**41	**51	**93
**340D3	Zanesville silt loam, till plain, 10 to 18 percent slopes, severely eroded	2.57	1.4%		**86	**30	**37	**65
**339E	Wellston silt loam, 18 to 25 percent slopes	0.61	0.3%		**92	**32	**37	**69
**786F	Frondorf silt loam, 15 to 35 percent slopes	0.41	0.2%		**87	**29	**34	**67
Weighted Average					133.2	43.5	53.5	98.8

Table: Optimum Crop Productivity Ratings for Illinois Soil by K.R. Olson and J.M. Lang, Office of Research, ACES, University of Illinois at Champaign-Urbana. Version: 1/2/2012 Amended Table S2 B811
 Crop yields and productivity indices for optimum management (B811) are maintained at the following NRES web site: <http://soilproductivity.nres.illinois.edu/>
 ** Indexes adjusted for slope and erosion according to Bulletin 811 Table S3

*c: Using Capabilities Class Dominant Condition Aggregation Method

Soils data provided by USDA and NRCS. Soils data provided by University of Illinois at Champaign-Urbana.