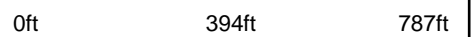


# Aerial Map



©2018 AgriData, Inc.

map center: 37° 46' 51.66, -89° 36' 37.99

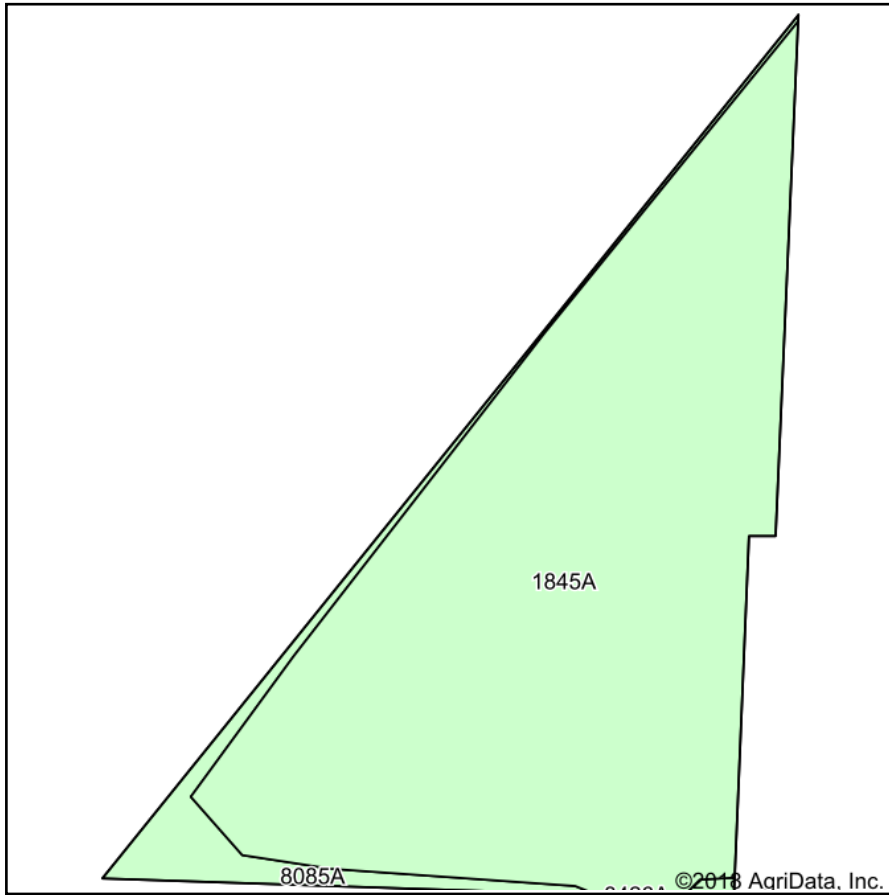


**1-9S-5W**  
**Jackson County**  
**Illinois**

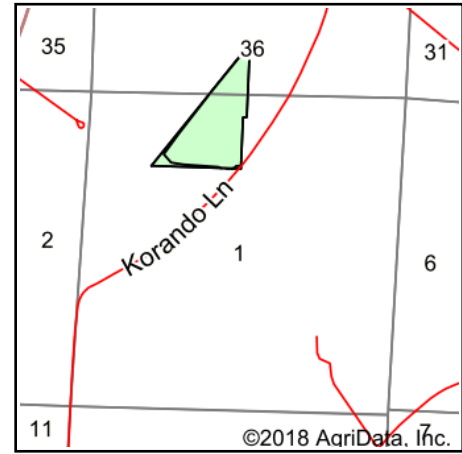


12/28/2018

# Soils Map



Soils data provided by USDA and NRCS.



State: **Illinois**  
 County: **Jackson**  
 Location: **1-9S-5W**  
 Township: **Degognia**  
 Acres: **35.92**  
 Date: **12/28/2018**



Maps Provided By:



© AgriData, Inc. 2018

www.AgridataInc.com



## Area Symbol: IL077, Soil Area Version: 18

| Code                    | Soil Description   | Acres | Percent of field | Il. State Productivity Index Legend | Corn Bu/A    | Soybeans Bu/A | Wheat Bu/A  | Crop productivity index for optimum management |
|-------------------------|--|-------|------------------|-------------------------------------|--------------|---------------|-------------|--|
| 1845A                   | Darwin and Jacob silty clays, undrained, 0 to 2 percent slopes, frequently flooded | 33.40 | 93.0%            |                                     | 131          | 46            | 52          | 101  |
| 8085A                   | Jacob silty clay, 0 to 2 percent slopes, occasionally flooded                      | 2.40  | 6.7%             |                                     | 105          | 39            | 43          | 82   |
| 8682B                   | Medway silty clay loam, 1 to 6 percent slopes, occasionally flooded                | 0.12  | 0.3%             |                                     | 176          | 57            | 69          | 131  |
| <b>Weighted Average</b> |  |       |                  |                                     | <b>129.4</b> | <b>45.6</b>   | <b>51.5</b> | <b>99.8</b>                                    |

## Table: Optimum Crop Productivity Ratings for Illinois Soil by K.R. Olson and J.M. Lang, Office of Research, ACES, University of Illinois at Champaign-Urbana. Version: 1/2/2012 Amended Table S2 B811

Crop yields and productivity indices for optimum management (B811) are maintained at the following NRES web site: <http://soilproductivity.nres.illinois.edu/>

\*\* Indexes adjusted for slope and erosion according to Bulletin 811 Table S3

Soils data provided by USDA and NRCS. Soils data provided by University of Illinois at Champaign-Urbana.