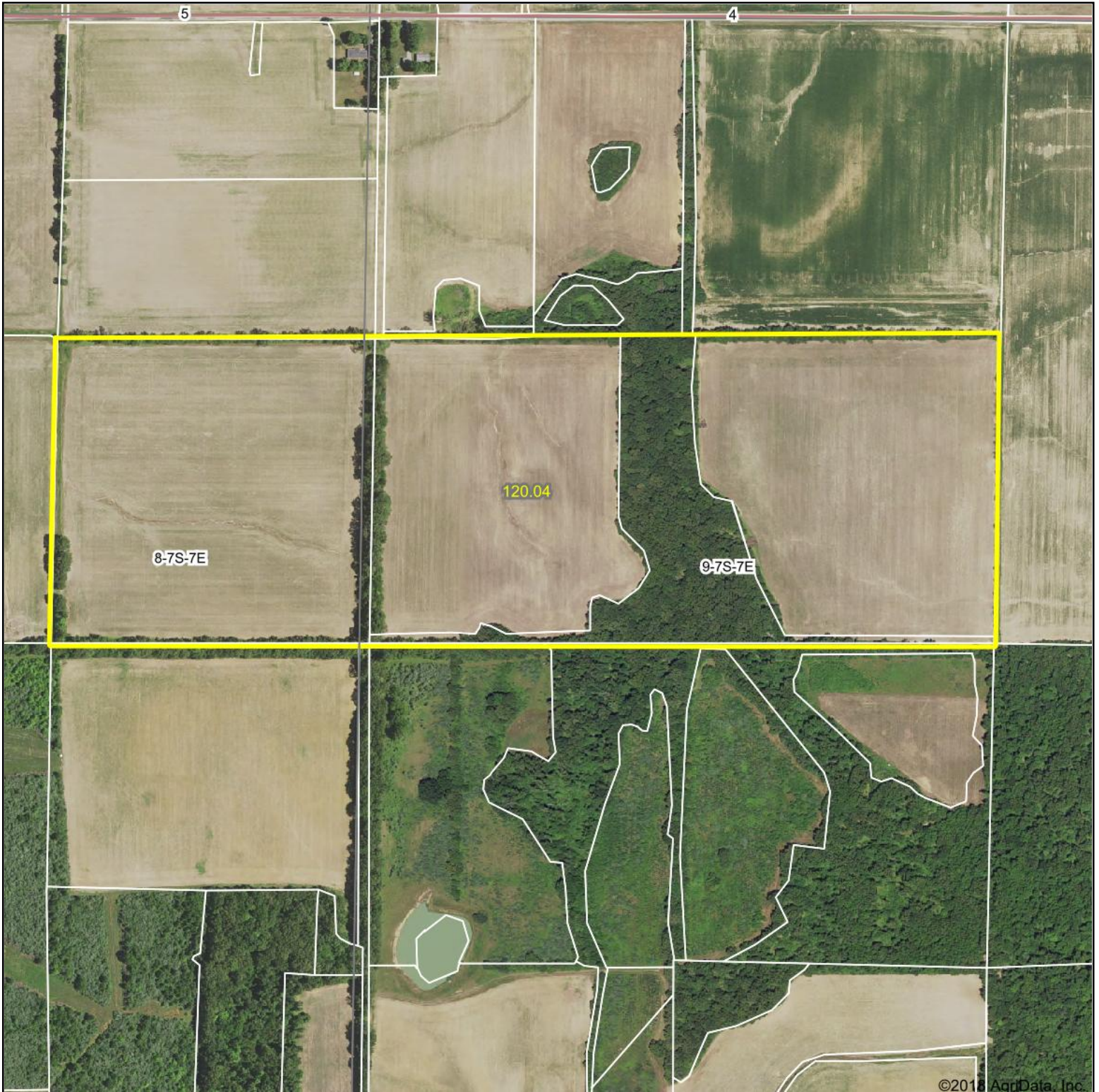
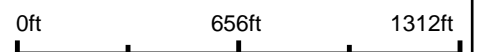


# Aerial Map



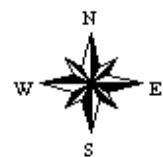
map center: 37° 55' 49.05, -88° 26' 45.44



Maps Provided By:



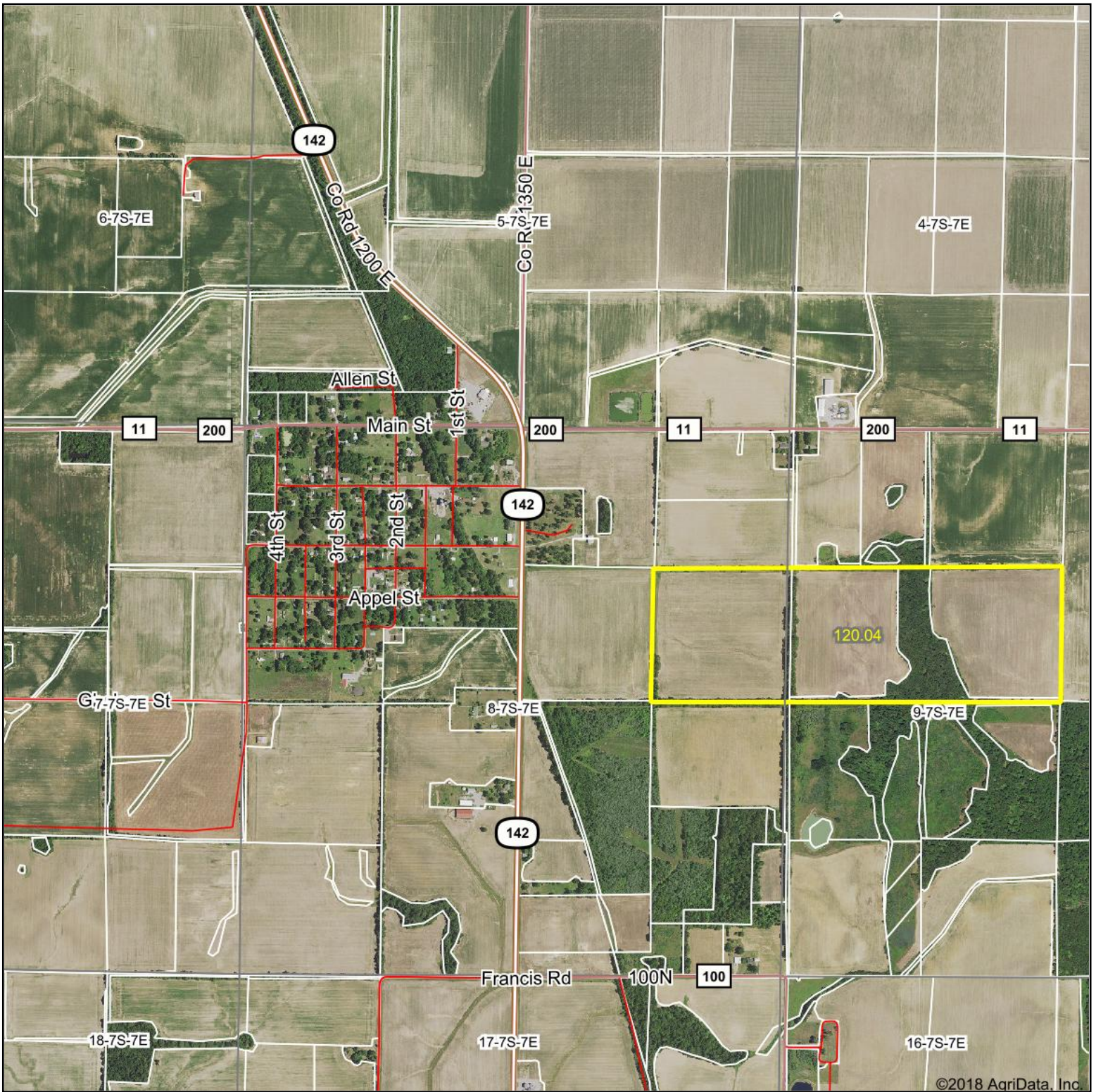
**9-7S-7E**  
**Hamilton County**  
**Illinois**



12/14/2018

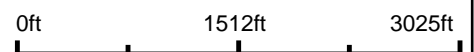


# Aerial Map

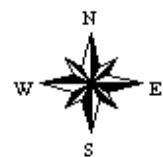


©2018 AgriData, Inc.

map center: 37° 55' 59.33, -88° 27' 24.61



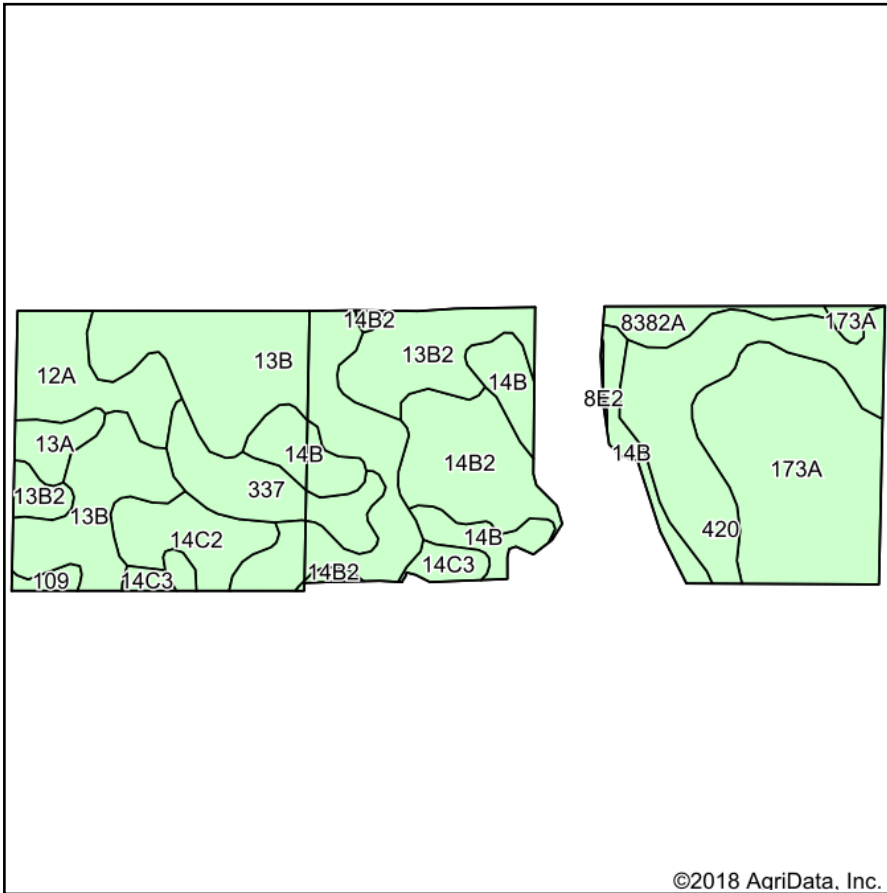
**8-7S-7E**  
**Hamilton County**  
**Illinois**



12/14/2018

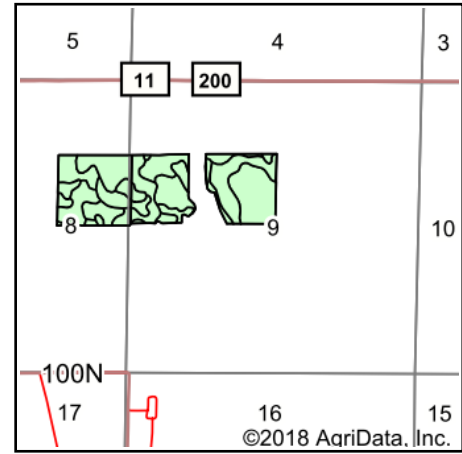


# Soils Map



Soils data provided by USDA and NRCS.

©2018 AgriData, Inc.



State: **Illinois**  
 County: **Hamilton**  
 Location: **9-7S-7E**  
 Township: **Mayberry**  
 Acres: **103.31**  
 Date: **12/14/2018**



Maps Provided By:



© Agridata, Inc. 2018

www.AgridataInc.com



## Area Symbol: IL065, Soil Area Version: 13

Code	Soil Description	Acres	Percent of field	Il. State Productivity Index Legend	Corn Bu/A	Soybeans Bu/A	Crop productivity index for optimum management
**13B	Bluford silt loam, 2 to 5 percent slopes	25.43	24.6%		**135	**44	**100
173A	McGary silt loam, 0 to 3 percent slopes	17.32	16.8%		132	45	100
420	Piopolis silty clay loam	12.17	11.8%		142	48	108
**14B	Ava silt loam, 2 to 5 percent slopes	9.29	9.0%		**134	**44	**99
**14B2	Ava silt loam, 2 to 5 percent slopes, eroded	8.64	8.4%		**126	**41	**93
**13B2	Bluford silt loam, 2 to 5 percent slopes, eroded	7.45	7.2%		**129	**42	**96
12A	Wynoose silt loam, 0 to 2 percent slopes	6.21	6.0%		128	42	97
337	Creal silt loam	5.74	5.6%		151	47	110
**14C2	Ava silt loam, 5 to 10 percent slopes, eroded	4.65	4.5%		**122	**40	**90
8382A	Belknap silt loam, 0 to 2 percent slopes, occasionally flooded	2.10	2.0%		156	52	117
13A	Bluford silt loam, 0 to 2 percent slopes	1.88	1.8%		136	44	101
**14C3	Ava silt loam, 5 to 10 percent slopes, severely eroded	1.73	1.7%		**100	**33	**74
109	Racoon silt loam	0.63	0.6%		144	46	106
**8E2	Hickory silt loam, 10 to 18 percent slopes, eroded	0.07	0.1%		**108	**36	**82
<b>Weighted Average</b>					<b>133.8</b>	<b>44.1</b>	<b>99.9</b>

**Table: Optimum Crop Productivity Ratings for Illinois Soil by K.R. Olson and J.M. Lang, Office of Research, ACES, University of Illinois at Champaign-Urbana.** Version: 1/2/2012 Amended Table S2 B811

Crop yields and productivity indices for optimum management (B811) are maintained at the following NRES web site: <http://soilproductivity.nres.illinois.edu/>

\*\* Indexes adjusted for slope and erosion according to Bulletin 811 Table S3

Soils data provided by USDA and NRCS. Soils data provided by University of Illinois at Champaign-Urbana.

\*c: Using Capabilities Class Dominant Condition Aggregation Method