

SOLD \$266,013 / CLOSED 2/13/19

# LAND AUCTION - CLAY COUNTY IL 80+- Acres Offered in 1 Tract

Part of Section 3 & 4 T11N-R7E - Hoosier Township - NE of Louisville - Off Mercury Ln / Co Rd 1425N

**SOLD!**

**SALE DATE: SATURDAY, DECEMBER 1, 2018**  
**10 AM AT THE ARMOR CHRISTIAN ACADEMY IN LOUISVILLE IL**

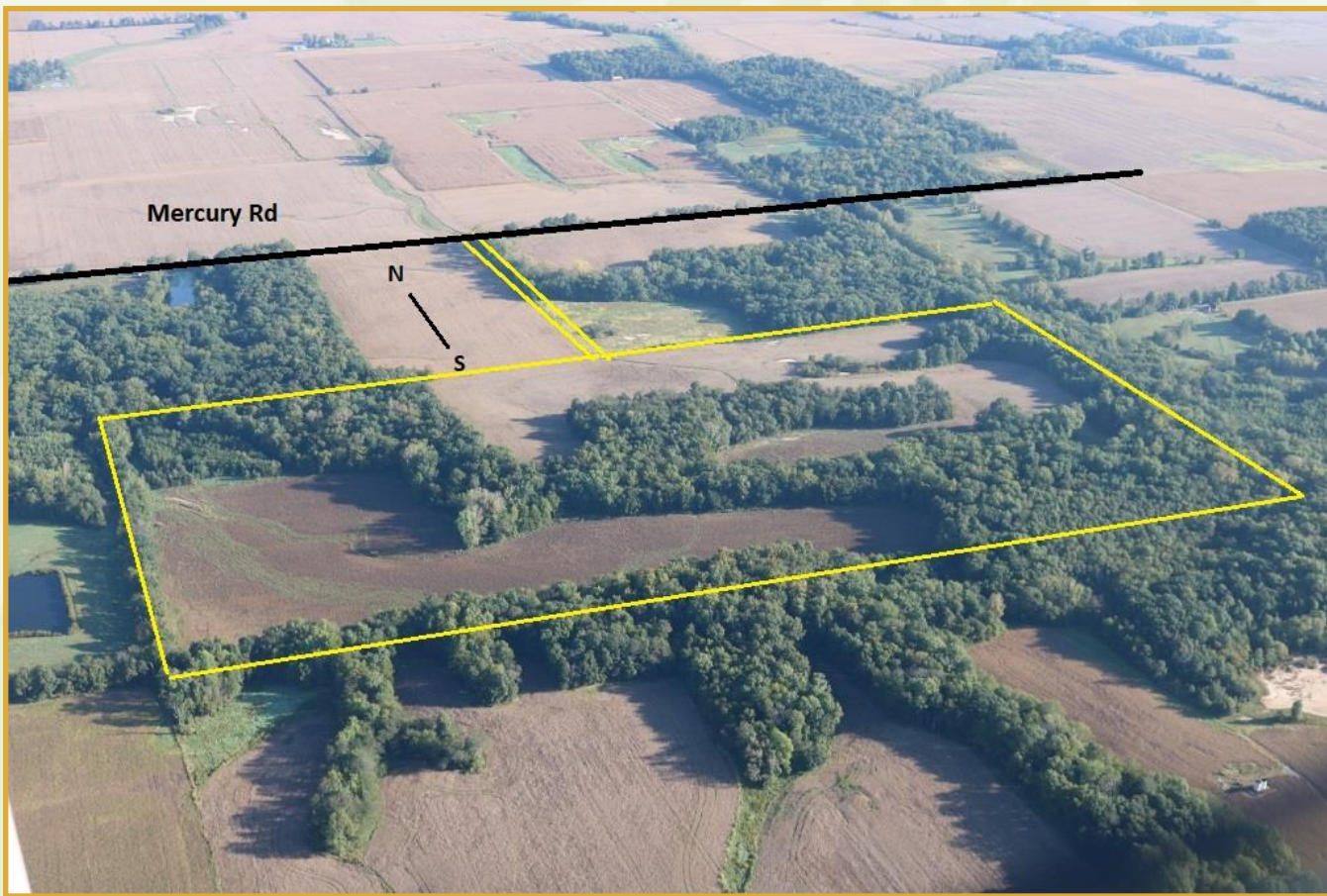
**Armor Christian Academy Address: 600 Erwin Street)**  
**PROPERTY INSPECTION BY APPOINTMENT ONLY**

## OFFERED IN 1 TRACT

**47.88 FSA Tillable Acres — Excellent Soil Rating — CPI 105**  
**Mature Timber — Hunting — Nice Home Sites**  
**Access from Mercury Lane South — 1/4 Mile to Property**

**REAL ESTATE LAND AUCTION TERMS: 10% down, balance at closing. No buyer's premium. Subject to prior sale.**  
**Auctioneer Mark Kennedy, IL Lic #44000202. Complete terms, conditions, photos, etc. on buyafarm.com.**  
**All statements made day of the sale take precedence over all printed advertisements.**

## LAND AUCTION - CLAY COUNTY 80 ACRES - SAT, DEC 1



# buyafarm.com

## Specializing in Rural Real Estate Sales and Auctions



1403 Hillcrest Drive - Sparta IL 62286 / 800-443-1998

**buyafarm.com**

**MANAGING BROKER**  
**Don Bailey**  
**618-919-1031**  
**dbailey@buyafarm.com**



BRANCH OFFICE: 301 N Main St, Flora IL 62839 - 855-468-3478