

SOLD \$266,013 / CLOSED 2/13/19

LAND AUCTION - CLAY COUNTY IL 80+- Acres Offered in 1 Tract

Part of Section 3 & 4 T11N-R7E - Hoosier Township - NE of Louisville - Off Mercury Ln / Co Rd 1425N

SOLD!

SALE DATE: SATURDAY, DECEMBER 1, 2018
10 AM AT THE ARMOR CHRISTIAN ACADEMY IN LOUISVILLE IL

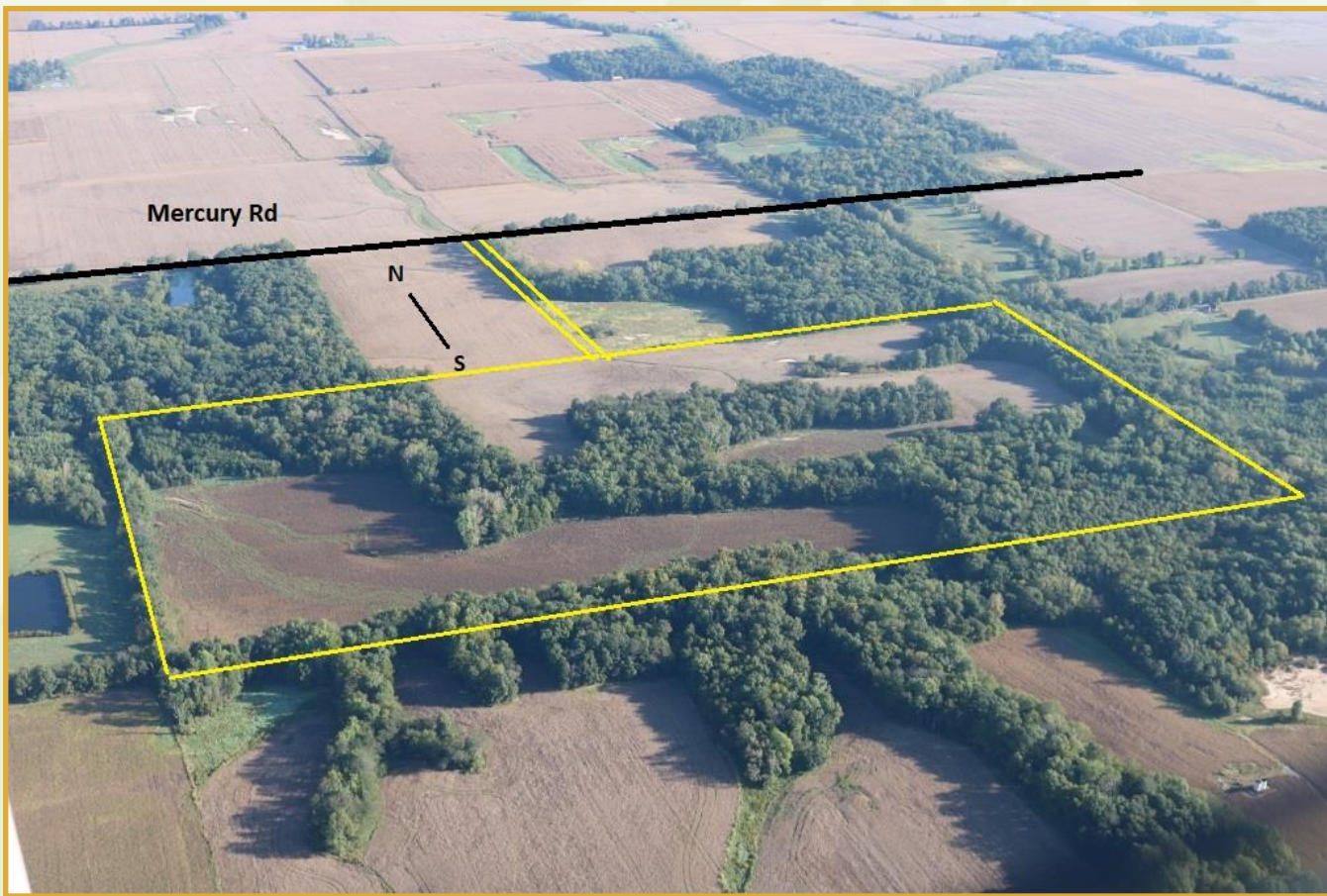
Armor Christian Academy Address: 600 Erwin Street)
PROPERTY INSPECTION BY APPOINTMENT ONLY

OFFERED IN 1 TRACT

47.88 FSA Tillable Acres — Excellent Soil Rating — CPI 105
Mature Timber — Hunting — Nice Home Sites
Access from Mercury Lane South — 1/4 Mile to Property

REAL ESTATE LAND AUCTION TERMS: 10% down, balance at closing. No buyer's premium. Subject to prior sale.
Auctioneer Mark Kennedy, IL Lic #440000202. Complete terms, conditions, photos, etc. on buyafarm.com.
All statements made day of the sale take precedence over all printed advertisements.

LAND AUCTION - CLAY COUNTY 80 ACRES - SAT, DEC 1



buyafarm.com

Specializing in Rural Real Estate Sales and Auctions



MANAGING BROKER
Don Bailey
618-919-1031
dbailey@buyafarm.com



BRANCH OFFICE: 301 N Main St, Flora IL 62839 - 855-468-3478