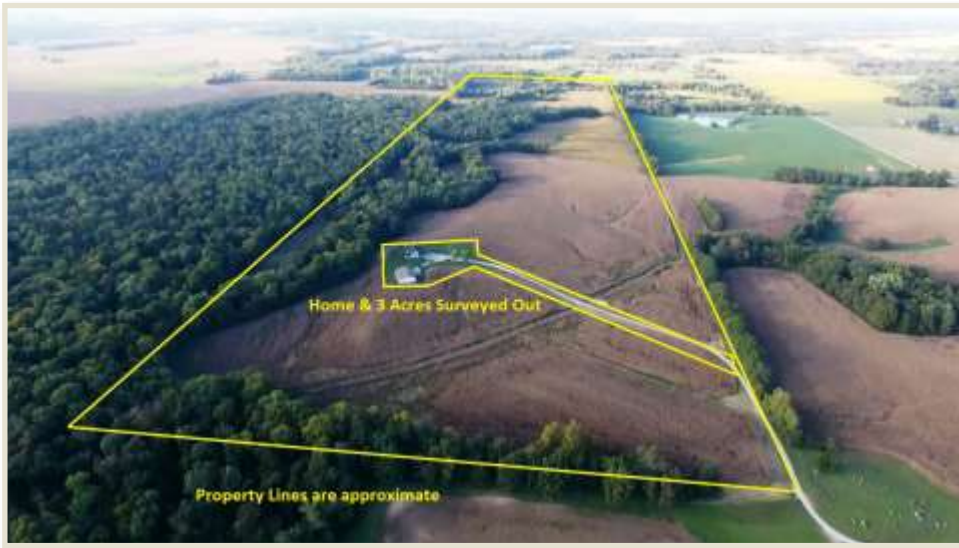


FOR SALE: 157+- Acres Perry County IL Tillable Land, Wetland, Hunt Property



Jamie Keller
Managing Broker
Cell: 618-713-7677
jkeller@buyafarm.com
Steeleville Branch Office



buyafarm.com

PROPERTY DETAILS (2390L)

Address: 5403 Cross Church Road, Pinckneyville IL 62274

List Price: \$659,400

This 157-acre farm has 118 acres of tillable land with a soil rating of 90 Pl. Rolling land with waterways. This property will also include your own hunting paradise. Beaucoup Creek runs through the property from north to south and includes 2 established creek crossings. For the waterfowl hunter, a wetland is established with a hunting blind. It includes 2 – 3" water pumps with discharge hose. There are 7.5 acres currently enrolled in CRP program until 2021. Pinckneyville schools. Taxes to be determined. Home available with 3 acres to be sold separately.

Directions from Pinckneyville: East on IL Hwy 154 for 1.5 miles to White Walnut Road. Turn left (north). Follow for 4 miles to the second Cross Church Road. Turn left (west) on the second/north Cross Church Road and follow for 0.25 mile. Property on the right. Driveway after cemetery. Signed.

Specializing in Rural Real Estate Sales and Auctions
MAIN OFFICE: 1403 Hillcrest Drive, Sparta IL 62286 / 800-443-1998