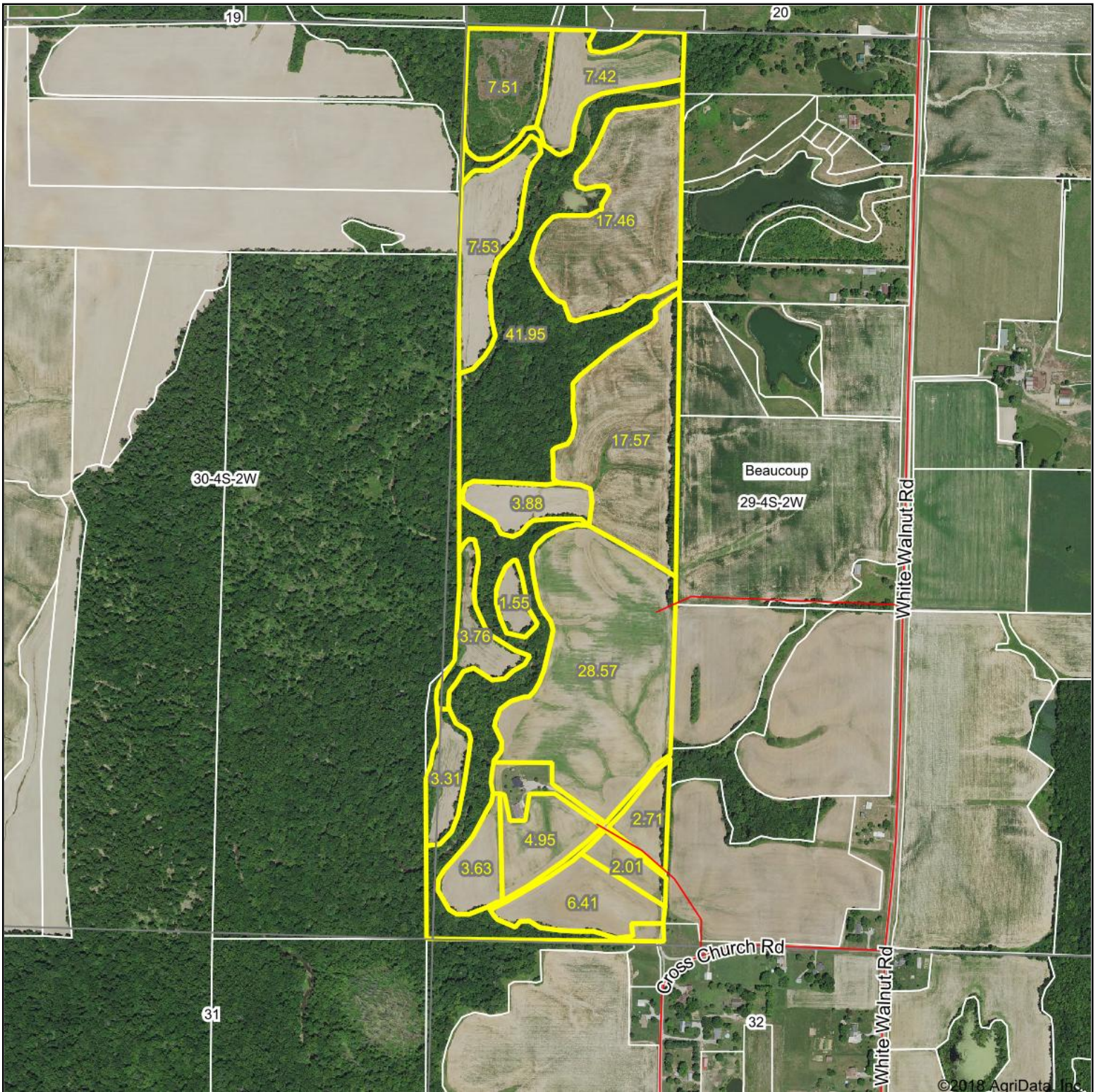
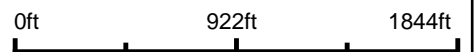


Aerial Map



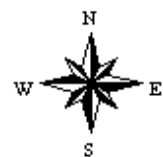
©2018 AgriData, Inc.

map center: 38° 8' 53.38, -89° 21' 0.75



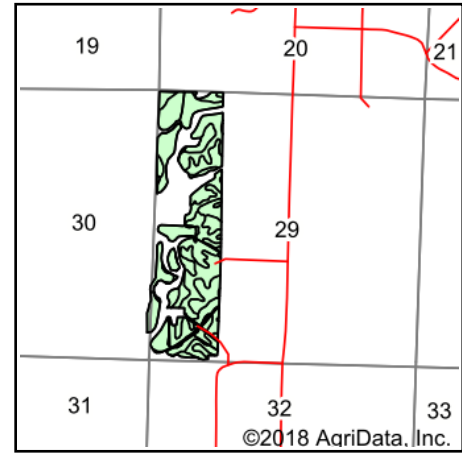
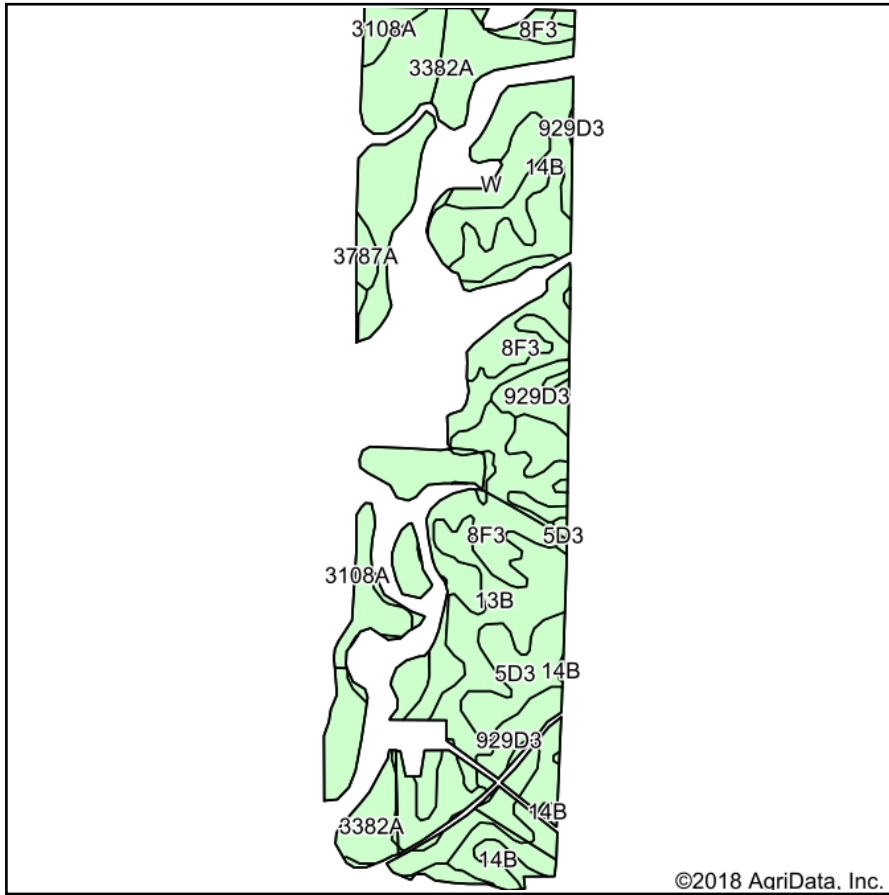
© AgriData, Inc. 2018 www.AgriDataInc.com

29-4S-2W
Perry County
Illinois



5/4/2018

Soils Map



State: **Illinois**
 County: **Perry**
 Location: **29-4S-2W**
 Township: **Beaucoup**
 Acres: **118.27**
 Date: **5/4/2018**



Soils data provided by USDA and NRCS.

Area Symbol: IL145, Soil Area Version: 14

Code	Soil Description	Acres	Percent of field	Il. State Productivity Index Legend	Corn Bu/A	Soybeans Bu/A	Wheat Bu/A	Crop productivity index for optimum management
**8F3	Hickory clay loam, 18 to 35 percent slopes, severely eroded	29.59	25.0%		**71	**24	**29	**54
3382A	Belknap silt loam, 0 to 2 percent slopes, frequently flooded	28.72	24.3%		156	52	63	117
**13B	Bluford silt loam, 2 to 5 percent slopes	17.77	15.0%		**135	**44	**54	**100
3108A	Bonnie silt loam, 0 to 2 percent slopes, frequently flooded	14.23	12.0%		149	49	59	111
**929D3	Hickory-Ava silty clay loams, 10 to 18 percent slopes, severely eroded	10.84	9.2%		**89	**30	**37	**68
**14B	Ava silt loam, 2 to 5 percent slopes	10.21	8.6%		**134	**44	**54	**99
**5D3	Blair silty clay loam, 10 to 18 percent slopes, severely eroded	5.87	5.0%		**95	**31	**38	**72
3787A	Banlic silt loam, 0 to 2 percent slopes, frequently flooded	1.04	0.9%		142	47	56	106
Weighted Average					119.5	39.6	48.2	89.6

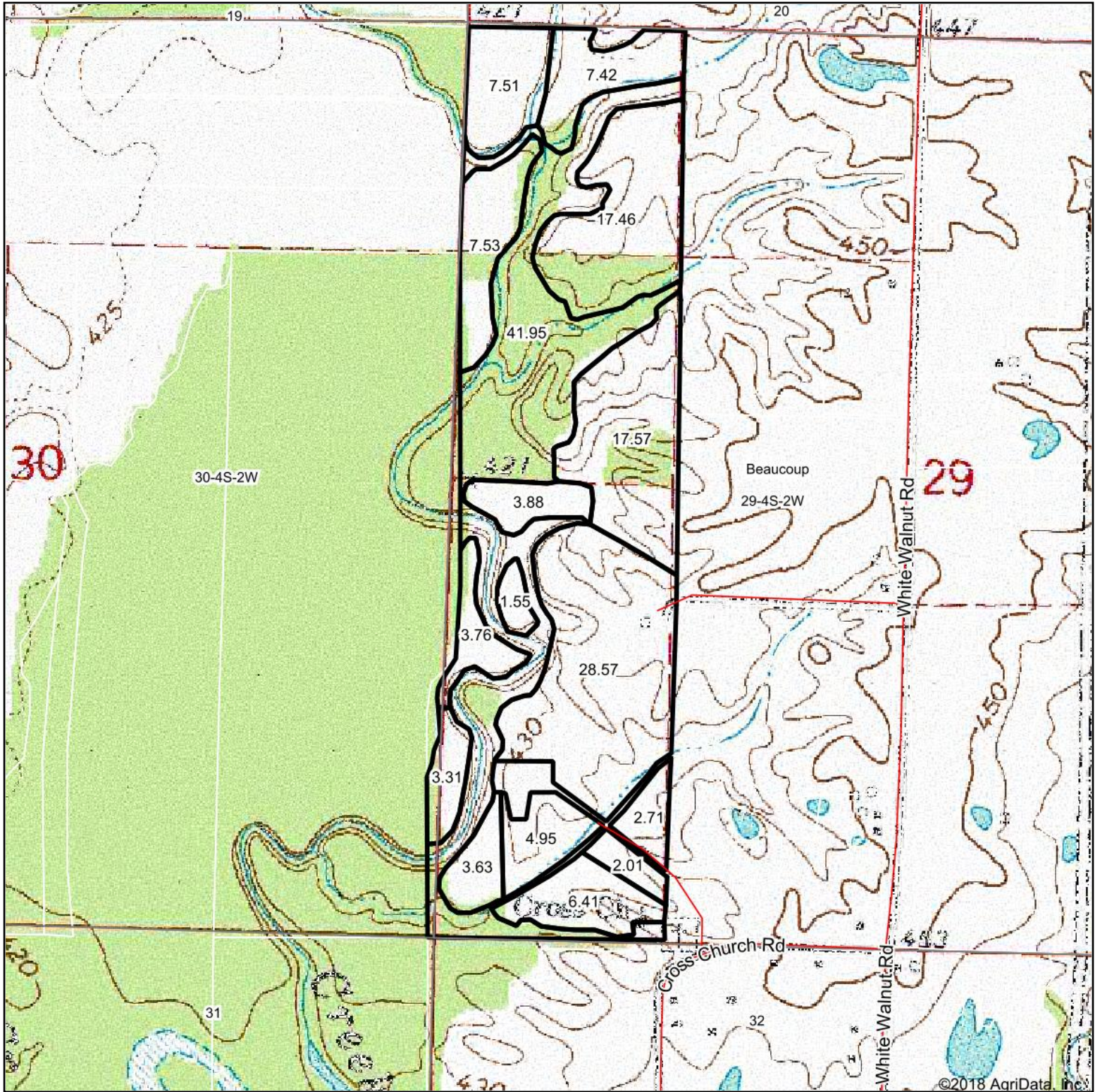
Table: Optimum Crop Productivity Ratings for Illinois Soil by K.R. Olson and J.M. Lang, Office of Research, ACES, University of Illinois at Champaign-Urbana. Version: 1/2/2012 Amended Table S2 B811

Crop yields and productivity indices for optimum management (B811) are maintained at the following NRES web site: <http://soilproductivity.nres.illinois.edu/>

** Indexes adjusted for slope and erosion according to Bulletin 811 Table S3

Soils data provided by USDA and NRCS. Soils data provided by University of Illinois at Champaign-Urbana.

Topography Map



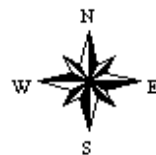
map center: 38° 8' 53.38, -89° 21' 0.75

0ft 922ft 1844ft



Maps Provided By:
surety
CUSTOMIZED ONLINE MAPPING
© AgriData, Inc. 2018 www.AgrIDataInc.com

29-4S-2W
Perry County
Illinois



5/4/2018