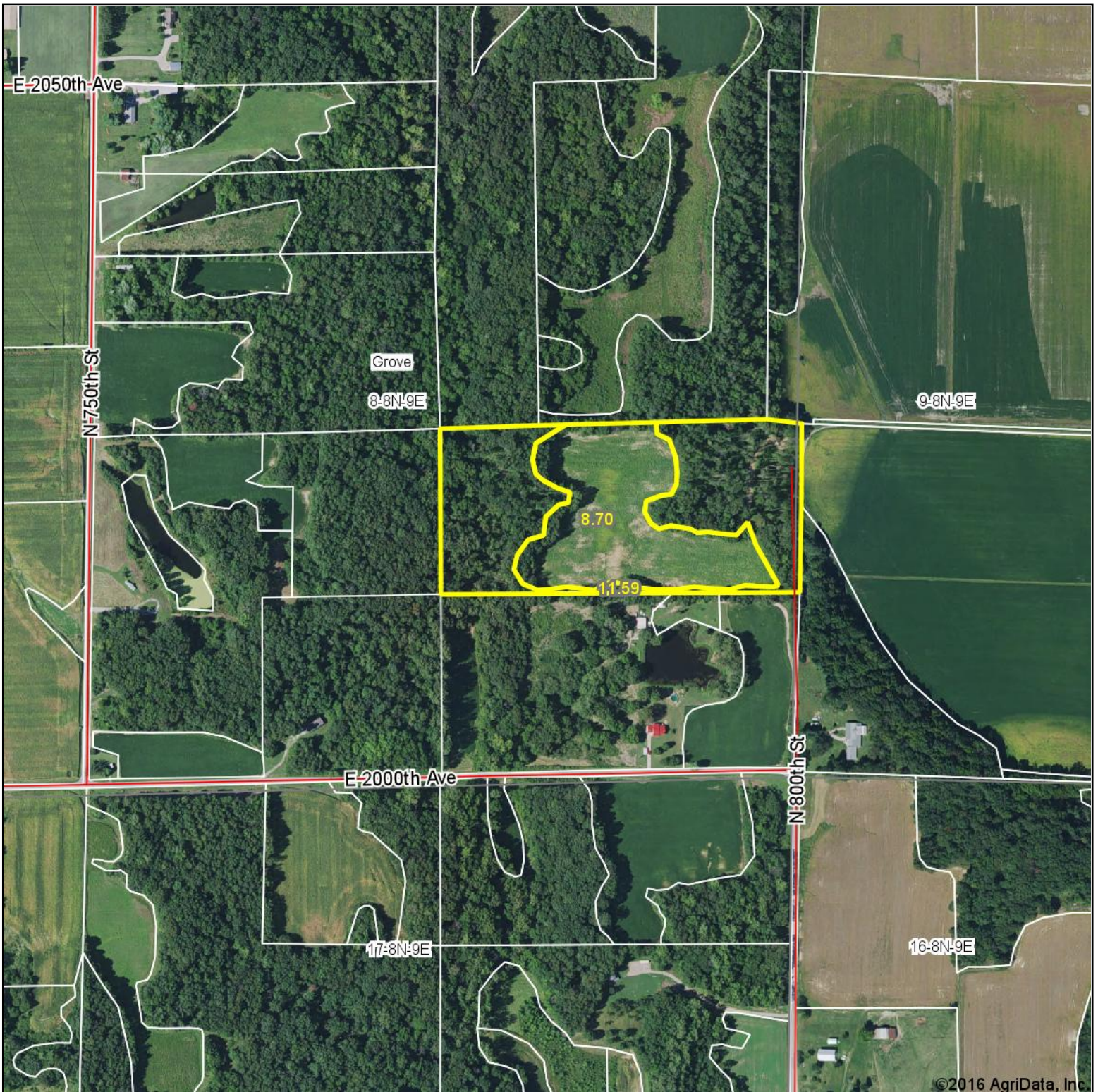
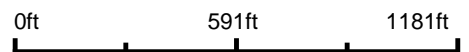


Aerial Map



©2016 AgriData, Inc.

map center: 39° 8' 39.2, -88° 13' 50.93



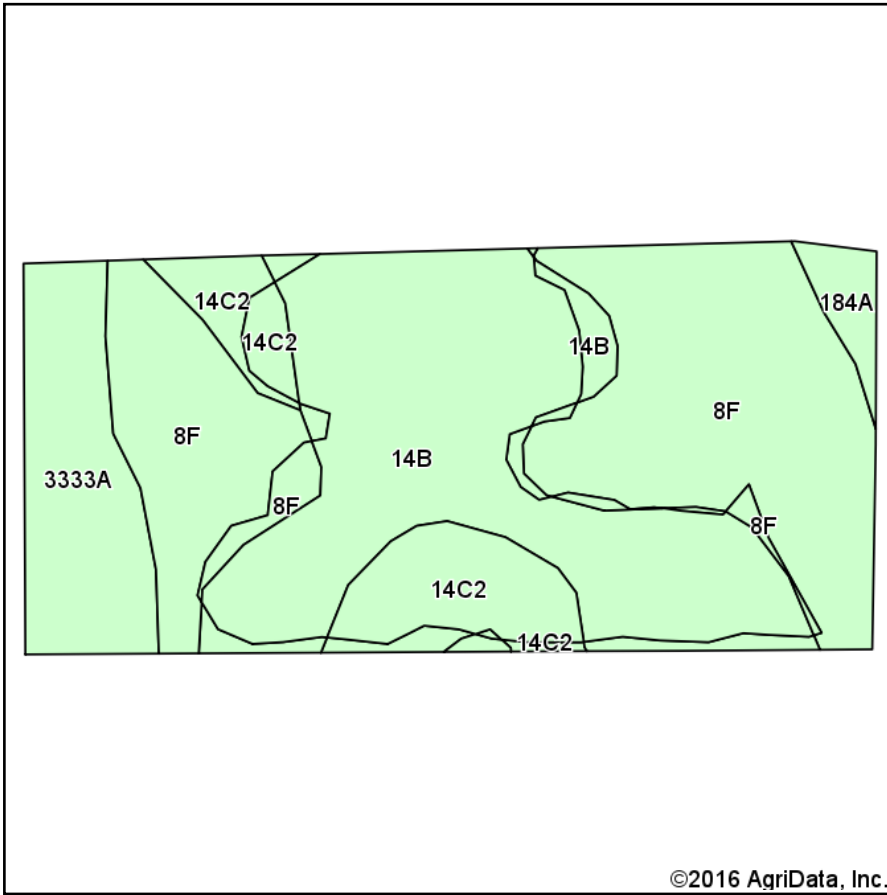
Maps Provided By:
surety
CUSTOMIZED ONLINE MAPPING
© AgriData, Inc. 2016 www.AgriDataInc.com

8-8N-9E
Jasper County
Illinois

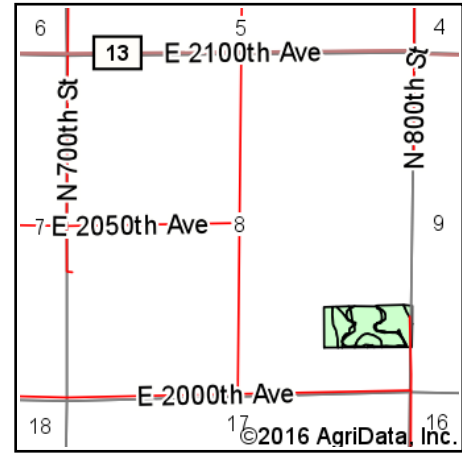


1/9/2017

Soils Map



Soils data provided by USDA and NRCS.



State: **Illinois**
 County: **Jasper**
 Location: **8-8N-9E**
 Township: **Grove**
 Acres: **20.29**
 Date: **1/9/2017**



Maps Provided By:



© AgriData, Inc. 2016

www.AgriDataInc.com



Area Symbol: IL079, Soil Area Version: 13

Code	Soil Description	Acres	Percent of field	Il. State Productivity Index Legend	Corn Bu/A	Soybeans Bu/A	Wheat Bu/A	Grass-legume e hay, T/A	Crop productivity index for optimum management
**8F	Hickory silt loam, 18 to 35 percent slopes	7.84	38.6%		**86	**29	**35	0.00	**65
**14B	Ava silt loam, 2 to 5 percent slopes	7.41	36.5%		**134	**44	**54	0.00	**99
3333A	Wakeland silt loam, 0 to 2 percent slopes, frequently flooded	2.46	12.1%		174	56	68	5.14	128
**14C2	Ava silt loam, 5 to 10 percent slopes, eroded	2.16	10.6%		**122	**40	**50	0.00	**90
184A	Roby fine sandy loam, 0 to 2 percent slopes	0.42	2.1%		145	50	58	4.64	111
Weighted Average					119.3	39.4	48	0.72	88.7

Area Symbol: IL079, Soil Area Version: 13

Table: Optimum Crop Productivity Ratings for Illinois Soil by K.R. Olson and J.M. Lang, Office of Research, ACES, University of Illinois at Champaign-Urbana. Version: 1/2/2012 Amended Table S2 B811

Crop yields and productivity indices for optimum management (B811) are maintained at the following NRES web site:

<https://www.ideals.illinois.edu/handle/2142/1027/>

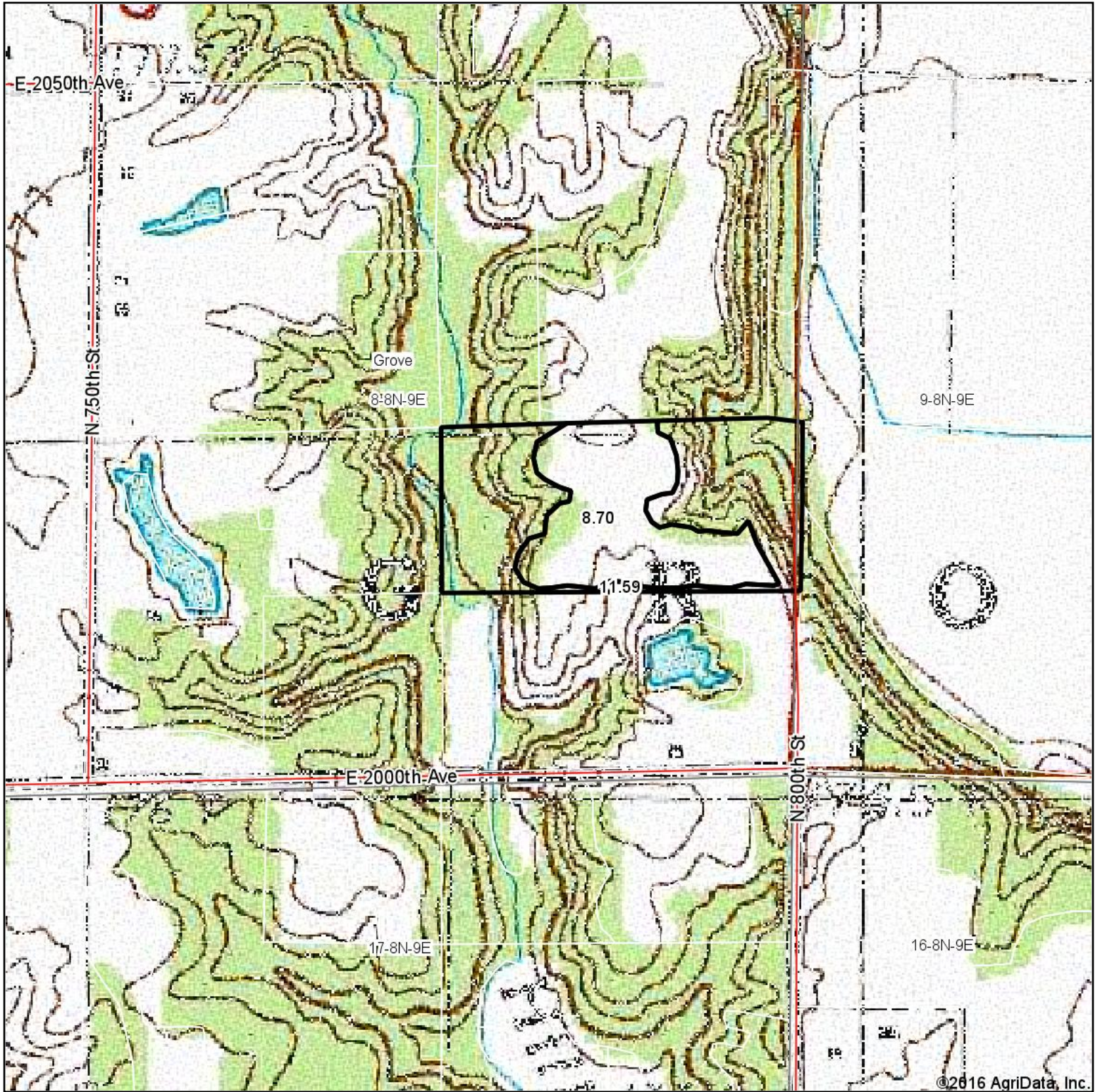
** Indexes adjusted for slope and erosion according to Bulletin 811 Table S3

e Soils in the well drained group were not rated for grass-legume and are shown with a zero "0".

Soils data provided by USDA and NRCS. Soils data provided by University of Illinois at Champaign-Urbana.

*c: Using Capabilities Class Dominant Condition Aggregation Method

Topography Map



map center: 39° 8' 39.2, -88° 13' 50.93

0ft 591ft 1181ft



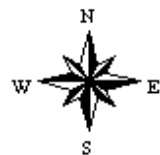
Maps Provided By:



© AgriData, Inc. 2016

www.AgriDataInc.com

8-8N-9E
Jasper County
Illinois



1/9/2017