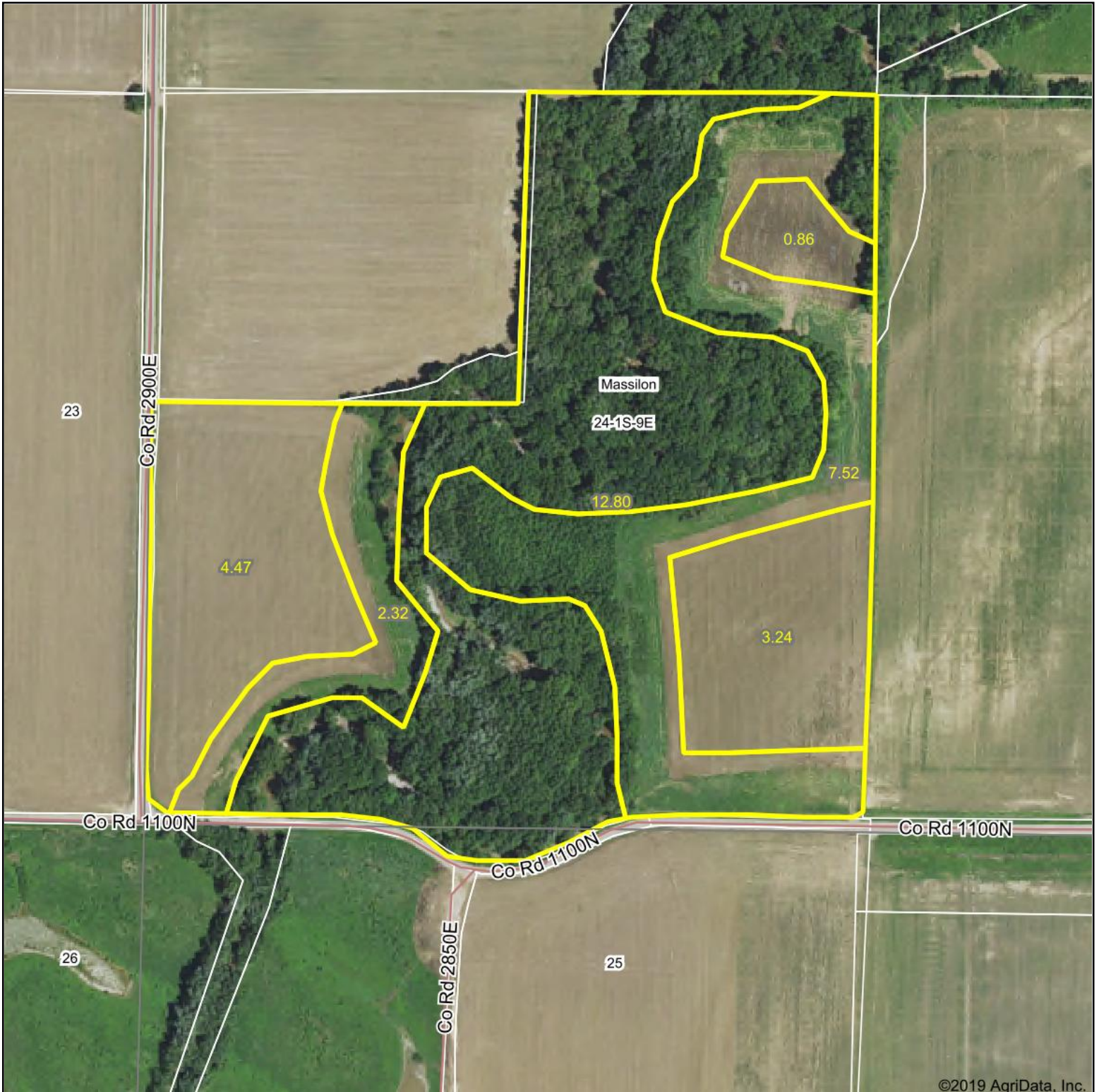


Aerial Map



©2019 AgriData, Inc.



Brett Berger, ARA

map center: 38.416364, -88.164095

0ft 282ft 564ft

Maps Provided By:

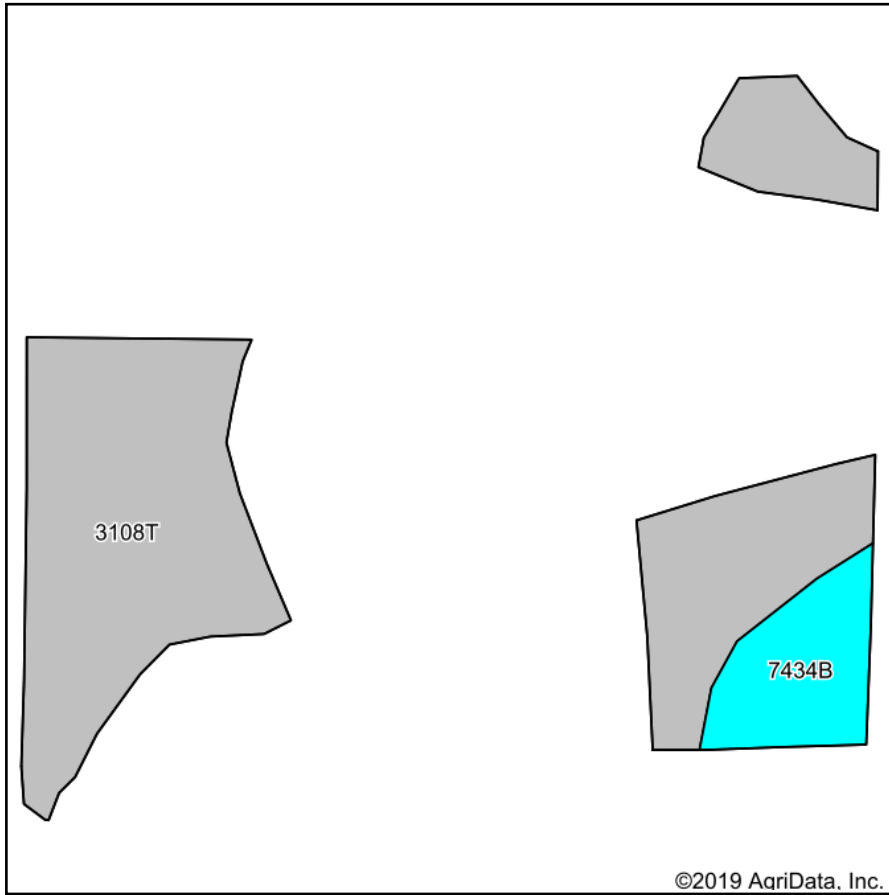
CUSTOMIZED ONLINE MAPPING
© AgriData, Inc. 2019 www.AgriDataInc.com

24-1S-9E
Wayne County
Illinois

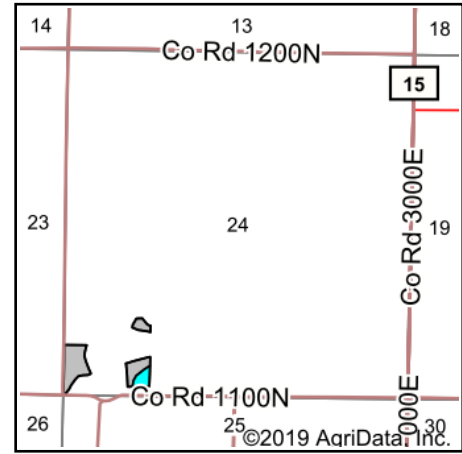


3/26/2019

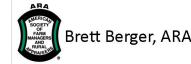
Soils Map



Soils data provided by USDA and NRCS.



State: **Illinois**
 County: **Wayne**
 Location: **24-1S-9E**
 Township: **Massilon**
 Acres: **8.57**
 Date: **3/26/2019**



Area Symbol: IL191, Soil Area Version: 16

| Code | Soil Description | Acres | Percent of field | Il. State Productivity Index Legend | Corn Bu/A | Soybeans Bu/A | Wheat Bu/A | Crop productivity index for optimum management |
|-------------------------|--|-------|------------------|-------------------------------------|--------------|---------------|-------------|--|
| 3108T | Bonnie silt loam, sodic, 0 to 2 percent slopes, frequently flooded | 7.30 | 85.2% | Grey | 149 | 49 | 59 | 111 |
| 7434B | Ridgway silt loam, 2 to 5 percent slopes, rarely flooded | 1.27 | 14.8% | Cyan | 164 | 50 | 61 | 117 |
| Weighted Average | | | | | 151.2 | 49.1 | 59.3 | 111.9 |

Table: Optimum Crop Productivity Ratings for Illinois Soil by K.R. Olson and J.M. Lang, Office of Research, ACES, University of Illinois at Champaign-Urbana. Version: 1/2/2012 Amended Table S2 B811

Crop yields and productivity indices for optimum management (B811) are maintained at the following NRES web site: <http://soilproductivity.nres.illinois.edu/>

** Indexes adjusted for slope and erosion according to Bulletin 811 Table S3

Soils data provided by USDA and NRCS. Soils data provided by University of Illinois at Champaign-Urbana.

*c: Using Capabilities Class Dominant Condition Aggregation Method