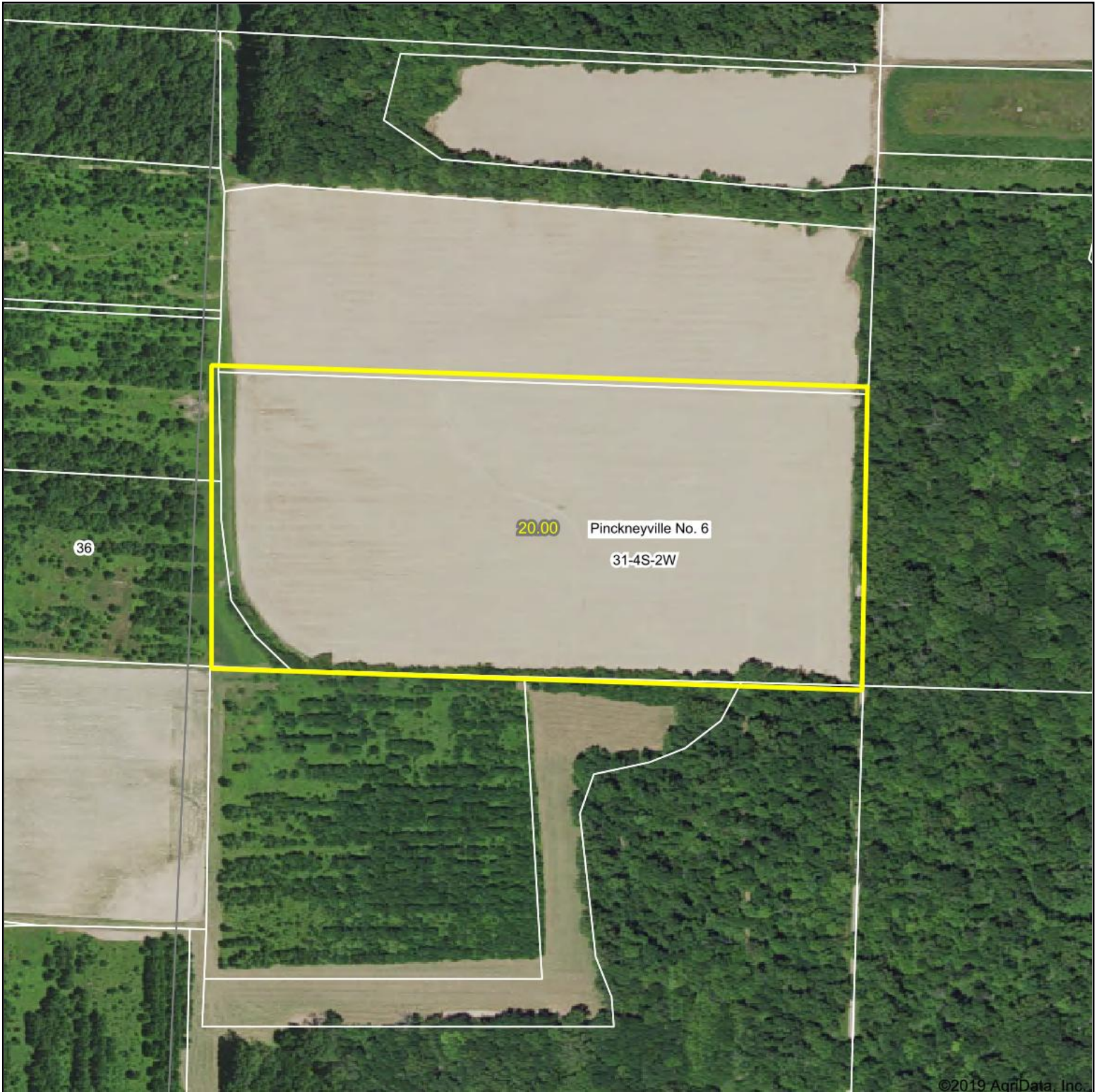


# Aerial Map



map center: 38° 7' 52.99, -89° 22' 6.01

0ft 325ft 650ft



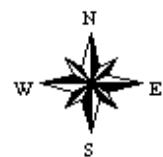
Maps Provided By:



© AgriData, Inc. 2019

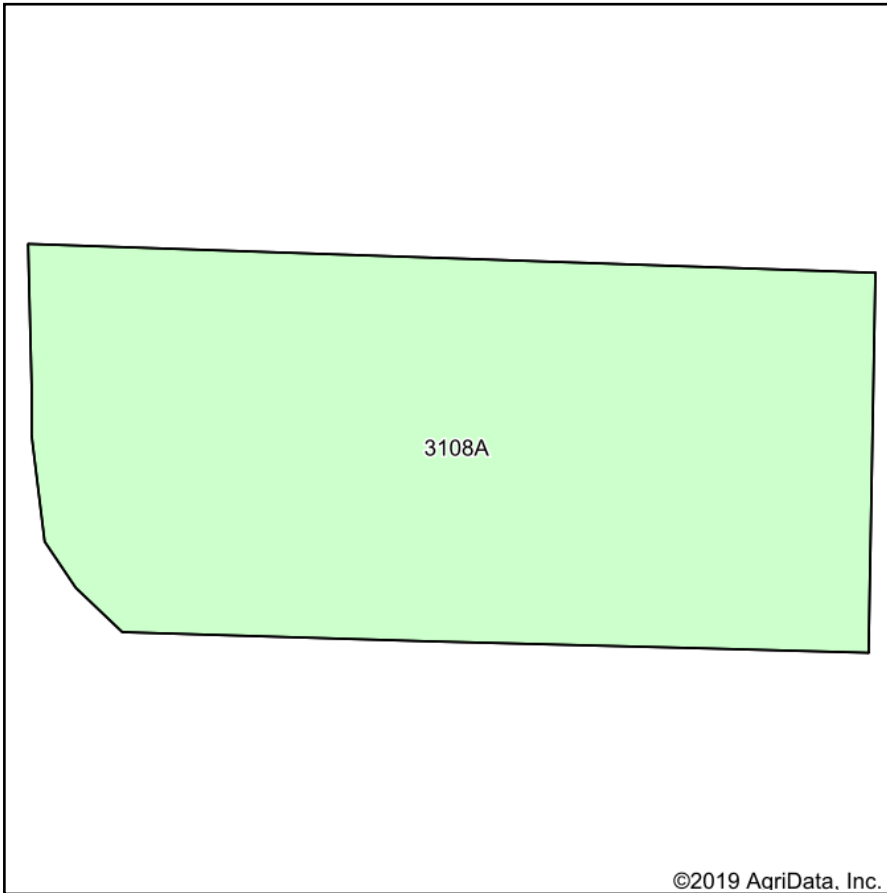
www.AgridataInc.com

**31-4S-2W**  
**Perry County**  
**Illinois**

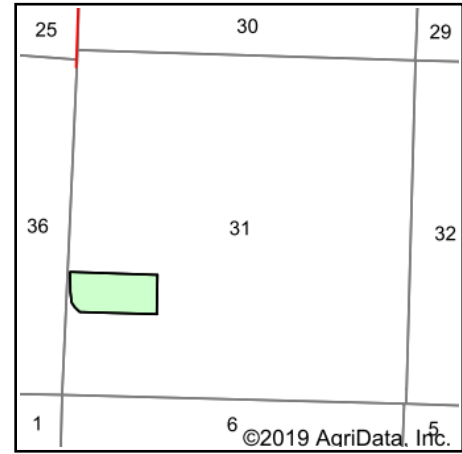


4/20/2019

# Soils Map



Soils data provided by USDA and NRCS.



State: **Illinois**  
 County: **Perry**  
 Location: **31-4S-2W**  
 Township: **Pinckneyville No. 6**  
 Acres: **18.84**  
 Date: **4/20/2019**



Maps Provided By:

© AgriData, Inc. 2019

www.AgriDataInc.com



**Area Symbol: IL145, Soil Area Version: 15**

| Code                    | Soil Description  | Acres | Percent of field | Il. State Productivity Index Legend | Corn Bu/A  | Soybeans Bu/A | Wheat Bu/A | Crop productivity index for optimum management |
|-------------------------|---|-------|------------------|-------------------------------------|------------|---------------|------------|--|
| 3108A                   | Bonnie silt loam, 0 to 2 percent slopes, frequently flooded | 18.84 | 100.0%           |                                     | 149        | 49            | 59         | 111  |
| <b>Weighted Average</b> |   |       |                  |                                     | <b>149</b> | <b>49</b>     | <b>59</b>  | <b>111</b>                                     |

**Table: Optimum Crop Productivity Ratings for Illinois Soil by K.R. Olson and J.M. Lang, Office of Research, ACES, University of Illinois at Champaign-Urbana.** Version: 1/2/2012 Amended Table S2 B811

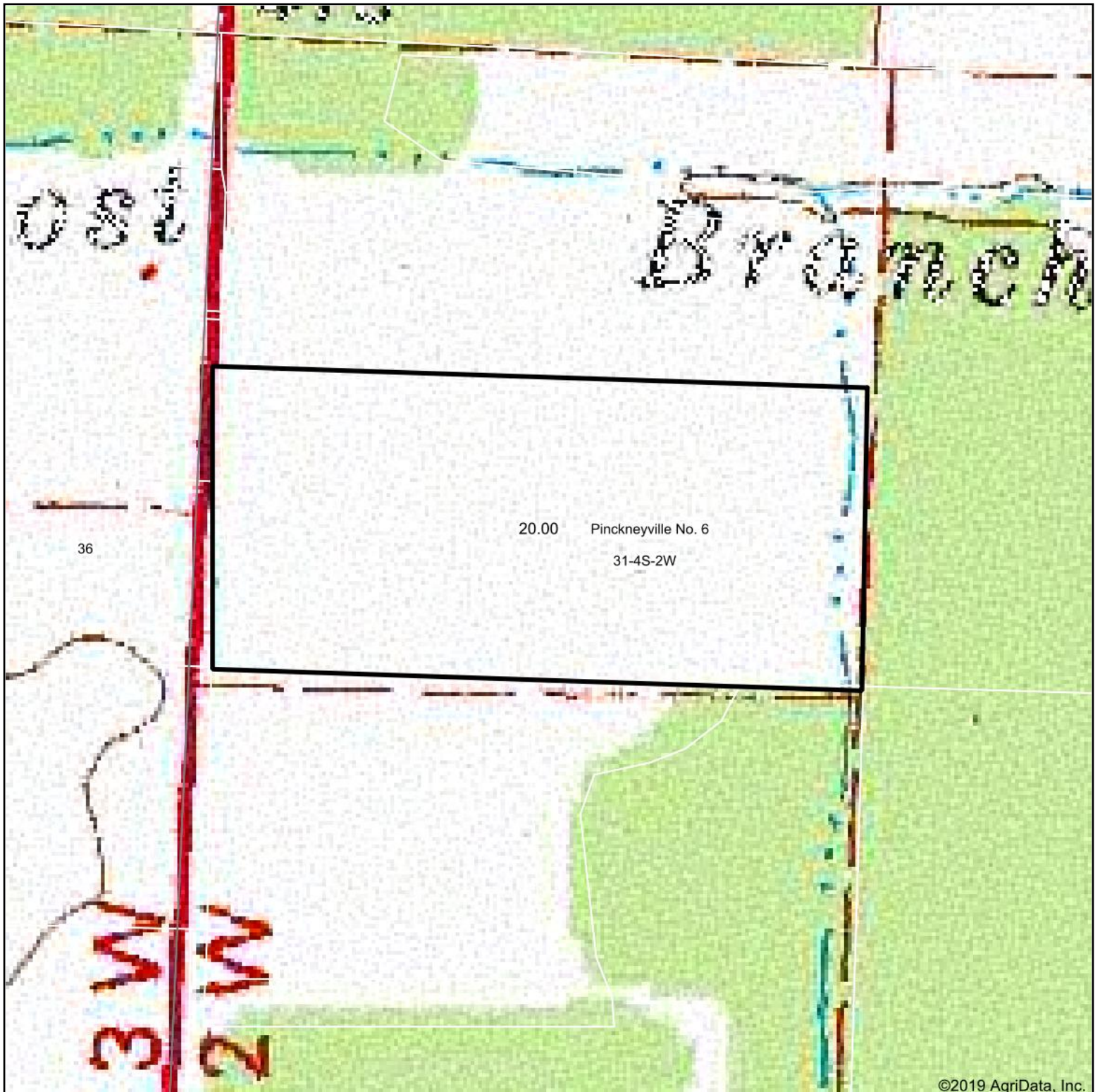
Crop yields and productivity indices for optimum management (B811) are maintained at the following NRES web site: <http://soilproductivity.nres.illinois.edu/>

\*\* Indexes adjusted for slope and erosion according to Bulletin 811 Table S3

Soils data provided by USDA and NRCS. Soils data provided by University of Illinois at Champaign-Urbana.

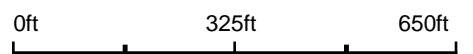


# Topography Map



©2019 AgriData, Inc.

map center: 38° 7' 52.99, -89° 22' 6.01



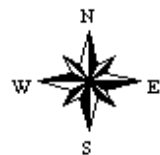
Maps Provided By:



© AgriData, Inc. 2019

www.AgrIDataInc.com

**31-4S-2W**  
**Perry County**  
**Illinois**



4/20/2019