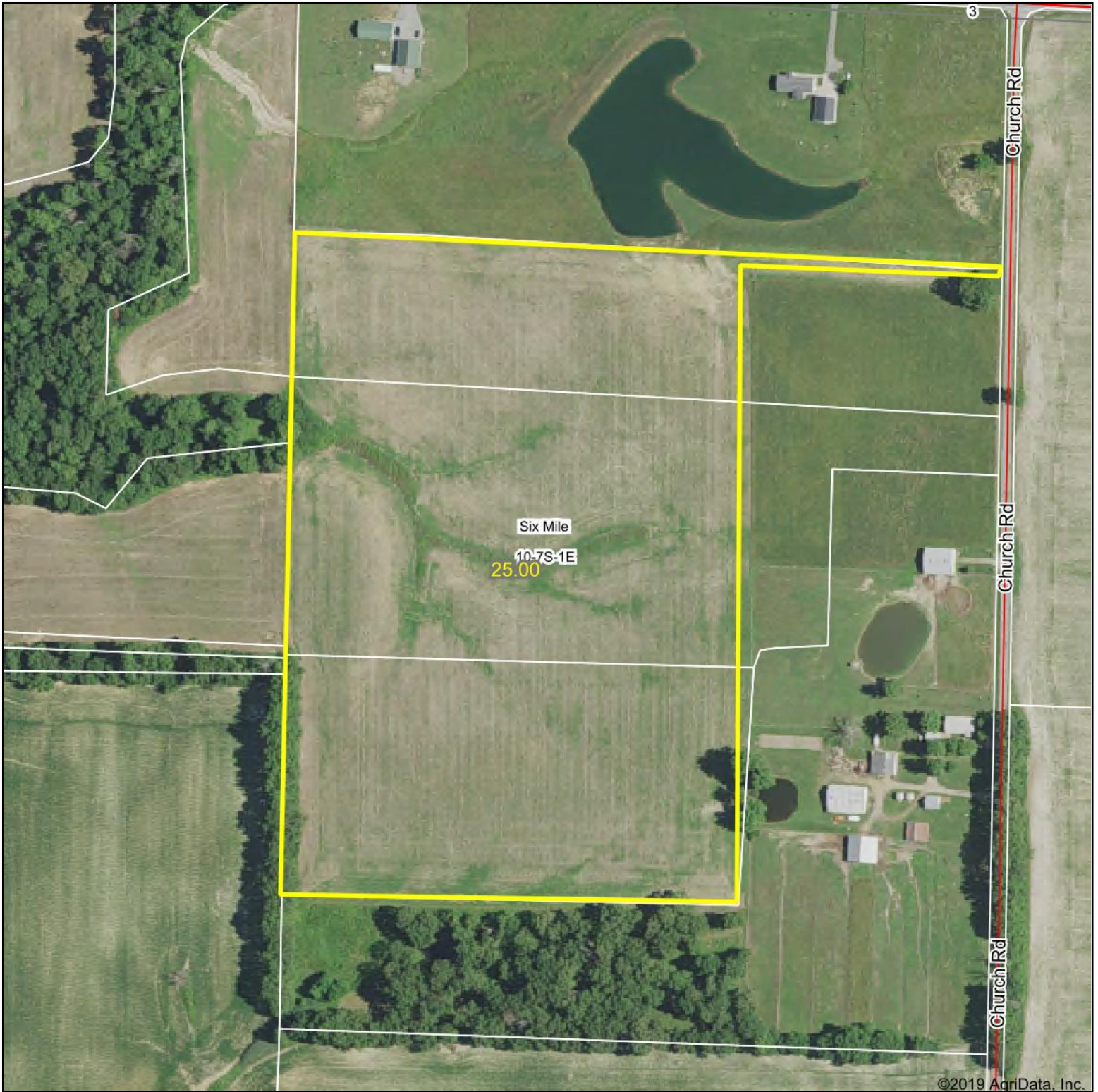


# Aerial Map



©2019 AgriData, Inc.

map center: 37° 55' 59.2, -89° 5' 5.07

0ft 299ft 597ft



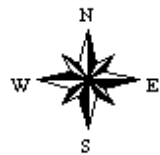
Maps Provided By:



© AgriData, Inc. 2019

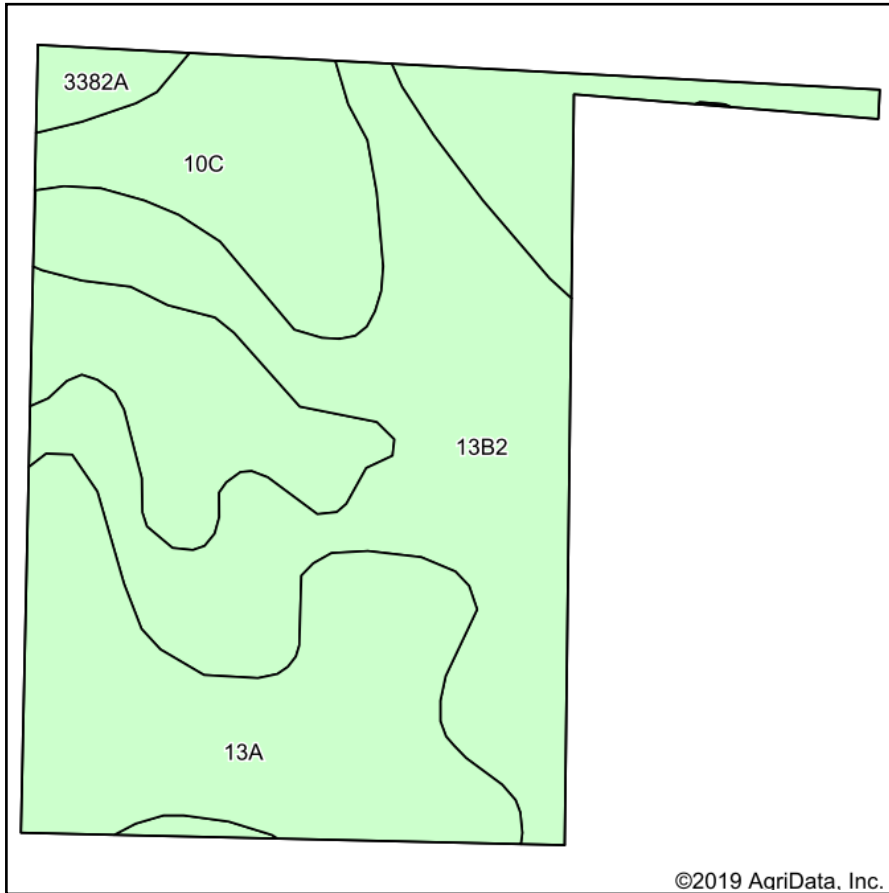
www.AgriDataInc.com

**10-7S-1E**  
**Franklin County**  
**Illinois**



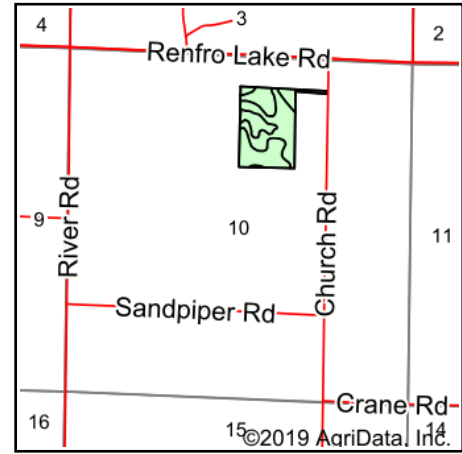
5/9/2019

# Soils Map



Soils data provided by USDA and NRCS.

©2019 AgriData, Inc.



State: **Illinois**  
 County: **Franklin**  
 Location: **10-7S-1E**  
 Township: **Six Mile**  
 Acres: **25.24**  
 Date: **5/8/2019**



Maps Provided By:



© AgriData, Inc. 2019

www.AgrIDataInc.com



Area Symbol: IL055, Soil Area Version: 12

Code	Soil Description	Acres	Percent of field	Il. State Productivity Index Legend	Corn Bu/A	Soybeans Bu/A	Wheat Bu/A	Crop productivity index for optimum management
**13B2	Bluford silt loam, 2 to 5 percent slopes, eroded	10.20	40.4%		**129	**42	**52	**96
**10C	Plumfield silty clay loam, 5 to 10 percent slopes	7.93	31.4%		**103	**34	**39	**78
13A	Bluford silt loam, 0 to 2 percent slopes	6.60	26.1%		136	44	55	101
3382A	Belknap silt loam, 0 to 2 percent slopes, frequently flooded	0.51	2.0%		156	52	63	117
<b>Weighted Average</b>					<b>123.2</b>	<b>40.2</b>	<b>48.9</b>	<b>92.1</b>

**Table: Optimum Crop Productivity Ratings for Illinois Soil by K.R. Olson and J.M. Lang, Office of Research, ACES, University of Illinois at Champaign-Urbana.** Version: 1/2/2012 Amended Table S2 B811

Crop yields and productivity indices for optimum management (B811) are maintained at the following NRES web site: <http://soilproductivity.nres.illinois.edu/>

\*\* Indexes adjusted for slope and erosion according to Bulletin 811 Table S3

Soils data provided by USDA and NRCS. Soils data provided by University of Illinois at Champaign-Urbana.