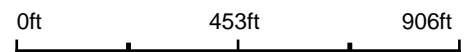


Aerial Map



©2019 AgriData, Inc.

Map Center: 37° 46' 10.56, -88° 31' 41.17

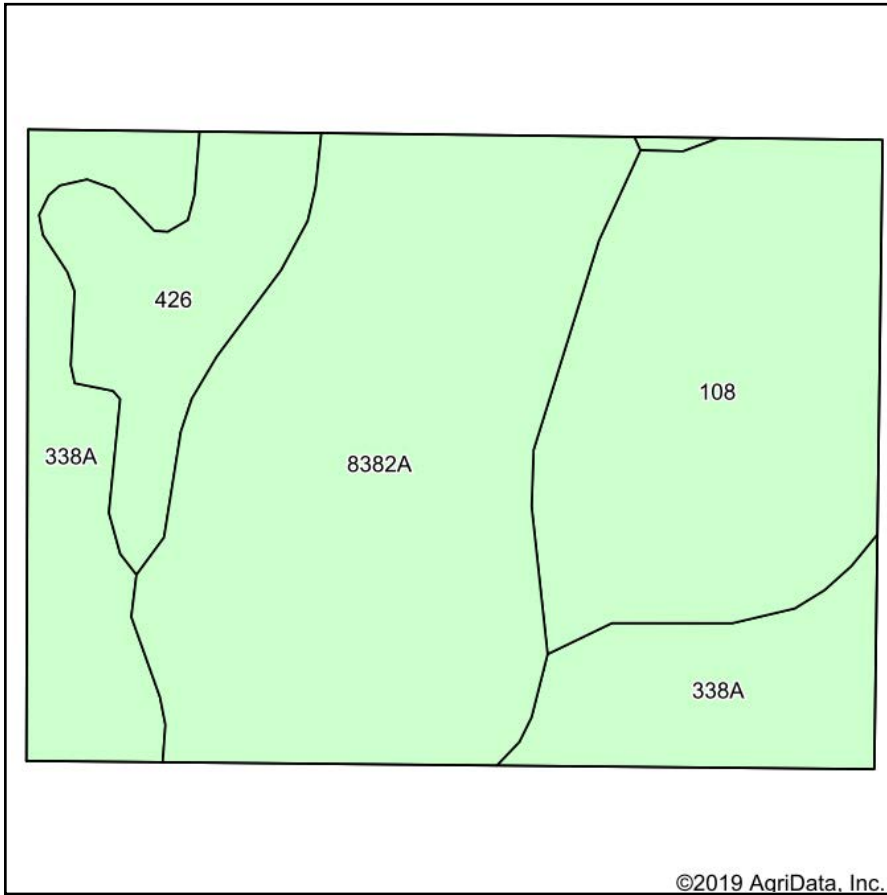


3-9S-6E
Saline County
Illinois

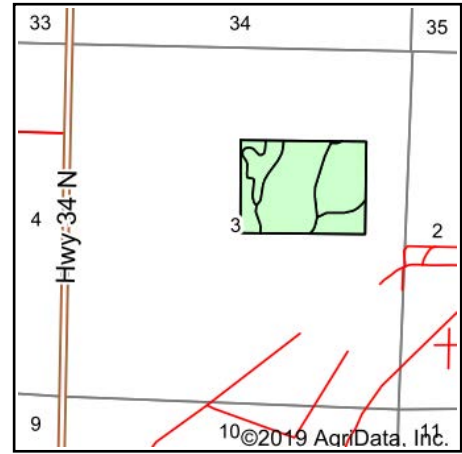


10/24/2019

Soils Map



Soils data provided by USDA and NRCS.



State: **Illinois**
 County: **Saline**
 Location: **3-9S-6E**
 Township: **Harrisburg**
 Acres: **66**
 Date: **10/24/2019**



Maps Provided By:



Area Symbol: IL165. Soil Area Version: 13								
Code	Soil Description	Acres	Percent of field	Il. State Productivity Index Legend	Corn Bu/A	Soybeans Bu/A	Wheat Bu/A	Crop productivity index for optimum management
8382A	Belknap silt loam, 0 to 2 percent slopes, occasionally flooded	27.34	41.4%		156	52	63	117
108	Bonnie silt loam	18.12	27.5%		149	49	59	111
338A	Hurst silt loam, 0 to 2 percent slopes	13.75	20.8%		134	44	55	100
426	Karnak silty clay	6.79	10.3%		134	45	53	101
Weighted Average					147.2	48.8	59.2	110.2

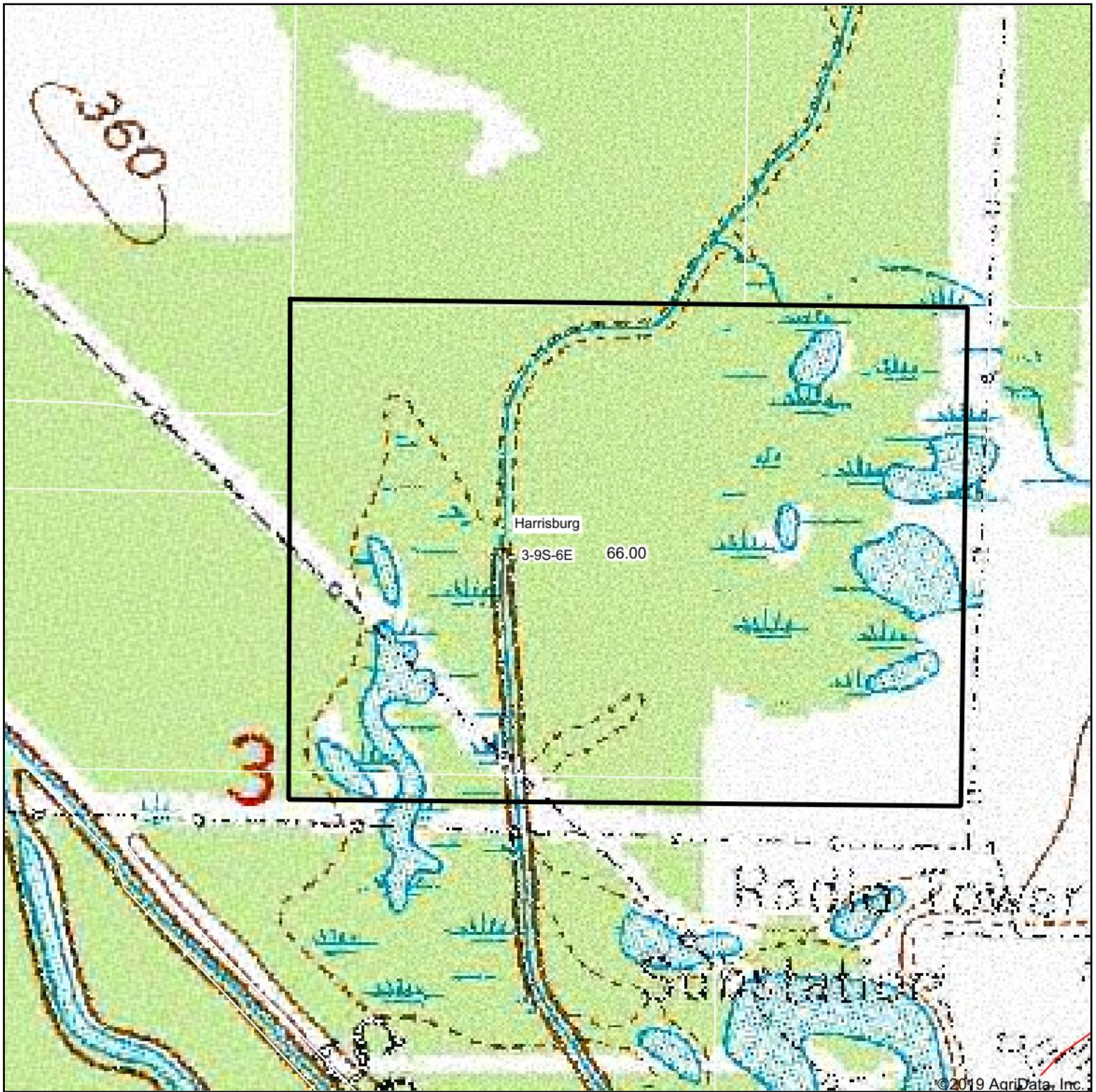
Table: Optimum Crop Productivity Ratings for Illinois Soil by K.R. Olson and J.M. Lang, Office of Research, ACES, University of Illinois at Champaign-Urbana. Version: 1/2/2012 Amended Table S2 B811

Crop yields and productivity indices for optimum management (B811) are maintained at the following NRES web site: <http://soilproductivity.nres.illinois.edu/>

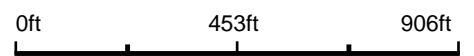
** Indexes adjusted for slope and erosion according to Bulletin 811 Table S3

Soils data provided by USDA and NRCS. Soils data provided by University of Illinois at Champaign-Urbana.

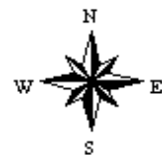
Topography Map



map center: 37° 46' 10.56, -88° 31' 41.17



3-9S-6E
Saline County
Illinois



10/24/2019



Maps Provided By:



© AgriData, Inc. 2019 www.AgrIDataInc.com