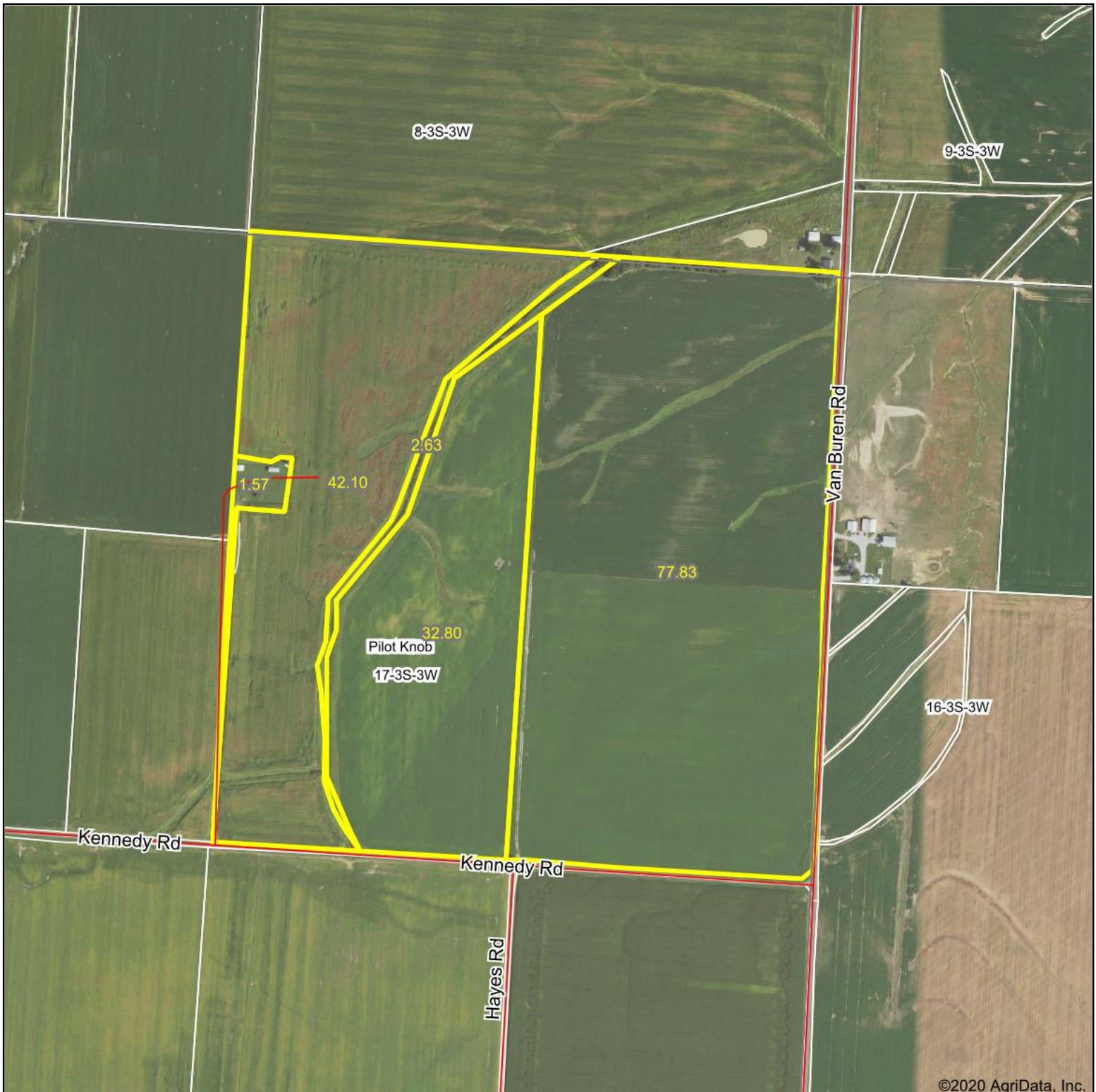
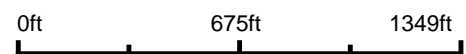


# Aerial Map

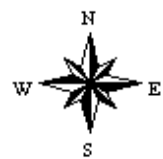


©2020 AgriData, Inc.

Map Center: 38° 16' 12.55, -89° 26' 50.89

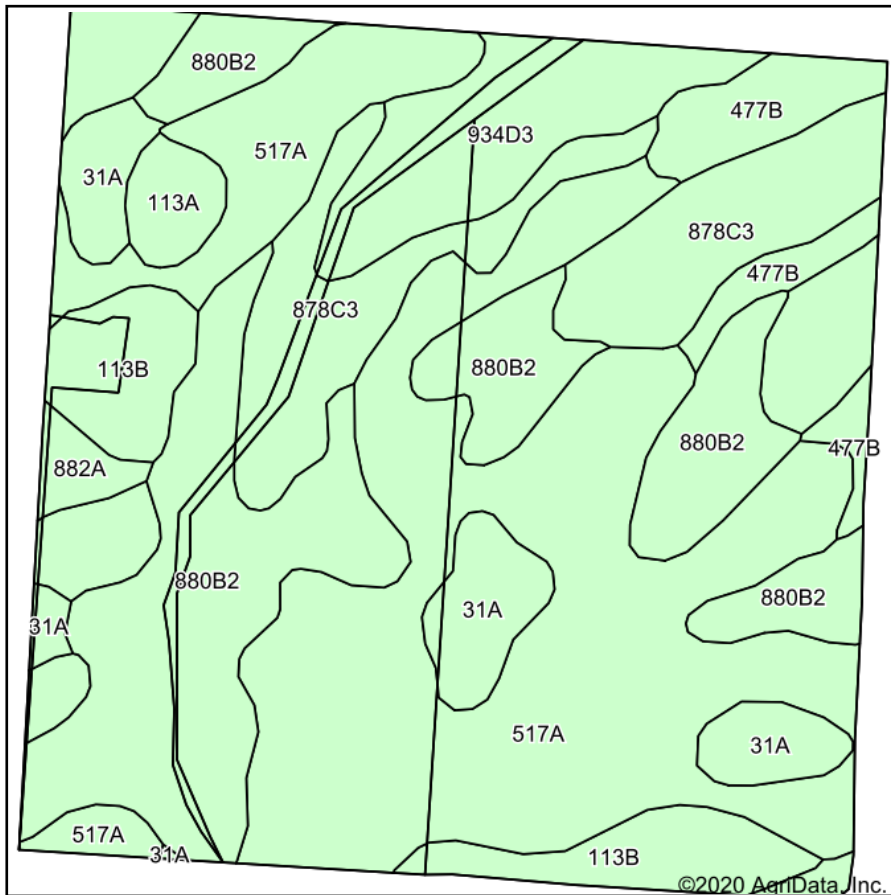


**17-3S-3W**  
**Washington County**  
**Illinois**

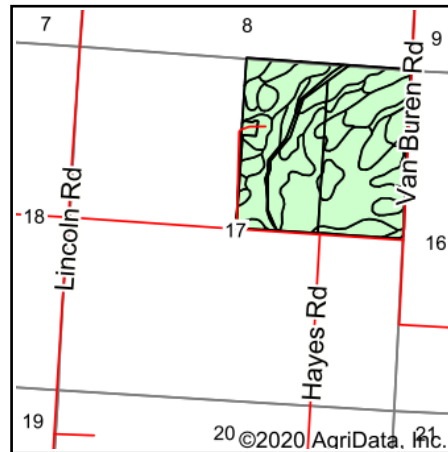


8/7/2020

# Soils Map



Soils data provided by USDA and NRCS.



State: **Illinois**  
 County: **Washington**  
 Location: **17-3S-3W**  
 Township: **Pilot Knob**  
 Acres: **156.93**  
 Date: **8/7/2020**



Maps Provided By:



© AgriData, Inc. 2020

www.AgriDataInc.com



Area Symbol: IL189. Soil Area Version: 15									
Code	Soil Description	Acres	Percent of field	Il. State Productivity Index Legend	Corn Bu/A	Soybeans Bu/A	Wheat Bu/A	Crop productivity index for optimum management	
517A	Marine silt loam, 0 to 2 percent slopes	62.55	39.9%		144	45	56	104	
**880B2	Darmstadt-Coulterville silt loams, 2 to 5 percent slopes, eroded	34.83	22.2%		**129	**43	**47	**97	
**878C3	Coulterville-Grantfork silty clay loams, 5 to 10 percent slopes, severely eroded	21.20	13.5%		**101	**33	**37	**75	
**934D3	Blair-Grantfork silt loams, 10 to 18 percent slopes, severely eroded	10.10	6.4%		**88	**30	**35	**68	
**113B	Oconee silt loam, 2 to 5 percent slopes	9.20	5.9%		**162	**50	**62	**118	
31A	Pierron silt loam, 0 to 2 percent slopes	8.79	5.6%		136	43	55	102	
**477B	Winfield silt loam, 2 to 5 percent slopes	6.51	4.1%		**160	**50	**62	**118	
113A	Oconee silt loam, 0 to 2 percent slopes	2.25	1.4%		164	50	63	119	
882A	Oconee-Darmstadt-Coulterville silt loams, 0 to 2 percent slopes	1.50	1.0%		148	48	56	110	
<b>Weighted Average</b>					<b>132.9</b>	<b>42.5</b>	<b>50.7</b>	<b>97.8</b>	

**Table: Optimum Crop Productivity Ratings for Illinois Soil by K.R. Olson and J.M. Lang, Office of Research, ACES, University of Illinois at Champaign-Urbana.** Version: 1/2/2012 Amended Table S2 B811

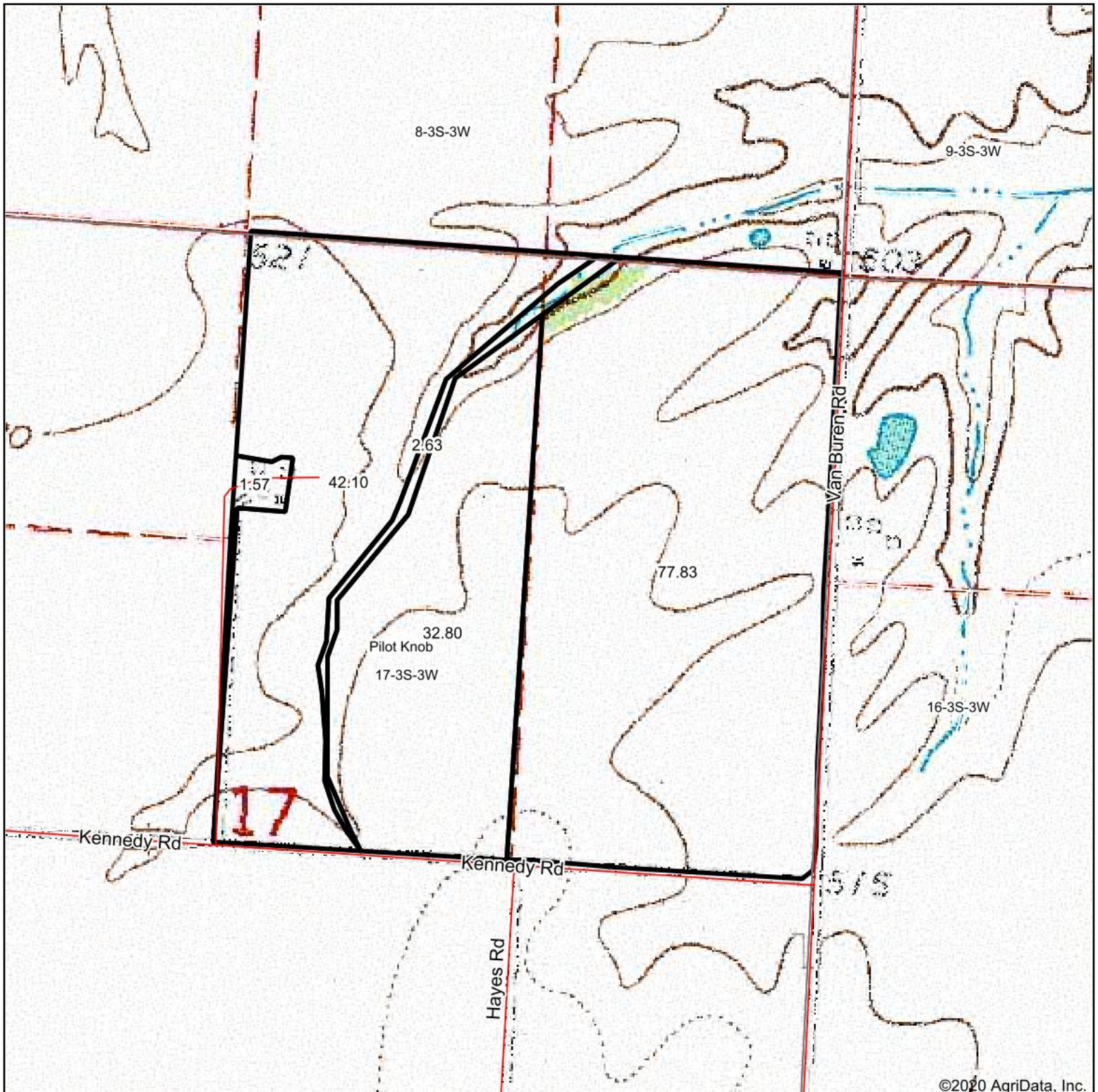
Crop yields and productivity indices for optimum management (B811) are maintained at the following NRES web site: <http://soilproductivity.nres.illinois.edu/>

\*\* Indexes adjusted for slope and erosion according to Bulletin 811 Table S3

Soils data provided by USDA and NRCS. Soils data provided by University of Illinois at Champaign-Urbana.

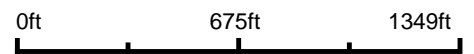


# Topography Map

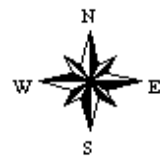


©2020 AgriData, Inc.

map center: 38° 16' 12.55, -89° 26' 50.89



**17-3S-3W**  
**Washington County**  
**Illinois**



8/7/2020



Maps Provided By:



© AgriData, Inc. 2020 www.AgridataInc.com

Field borders provided by Farm Service Agency as of 5/21/2008.