

▭ crp
▭ clu
▭ plss
Farm 4891
Tract 9581

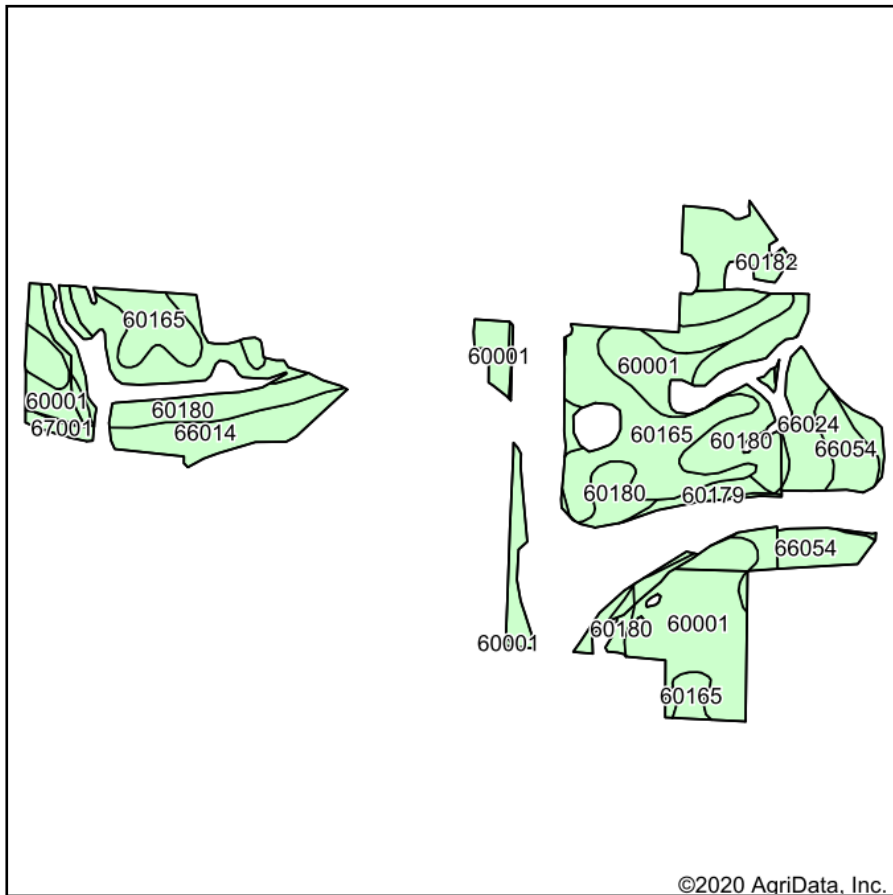
WHT=WHEAT-SRW-WGR CORN=CORN-YEL-GR
 SB=SOYBN-COM-GR MILLO=SORGH-GRS-GR
 BARLY=BARLY-WTR-GR O=OATS-SPR-GR
 RICE=RICE-LGR-GR GRASS=GRASS-FTA-LS
 HAY=GRASS-FTA-FG PAST=GRASS-FTA-GZ
 ALF=ALFAL-FG CCC=COVRC-CEG-CO
 CCM=COVRC-MIX-CO
 FIELD NONIRRIGATED UNLESS NOTATED ON MAP

Cape Girardeau Co. FSA 1 inch equals 818 feet
Program Year: 2020
 Created: 2/20/2020
 Flowm: 2018-10-21

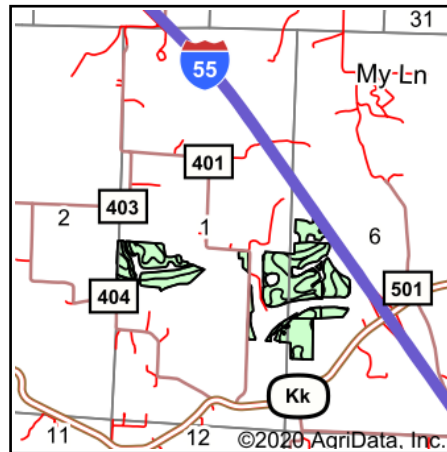
Wetland Determination Identifiers
● Restricted Use
▲ Limited Restrictions
■ Exempt from Conservation Compliance Provisions

Disclaimer: Wetland identifiers do not represent the size, shape or specific determination of the area. Refer to your original determination (CPA-026 and attached maps) for exact wetland boundaries and determinations, or contact NRCS.

Soils Map



Soils data provided by USDA and NRCS.



State: **Missouri**
 County: **Cape Girardeau**
 Location: **1-33N-11E**
 Township: **Apple Creek**
 Acres: **177.24**
 Date: **8/30/2020**

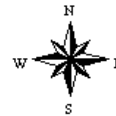


Maps Provided By:



© AgriData, Inc. 2020

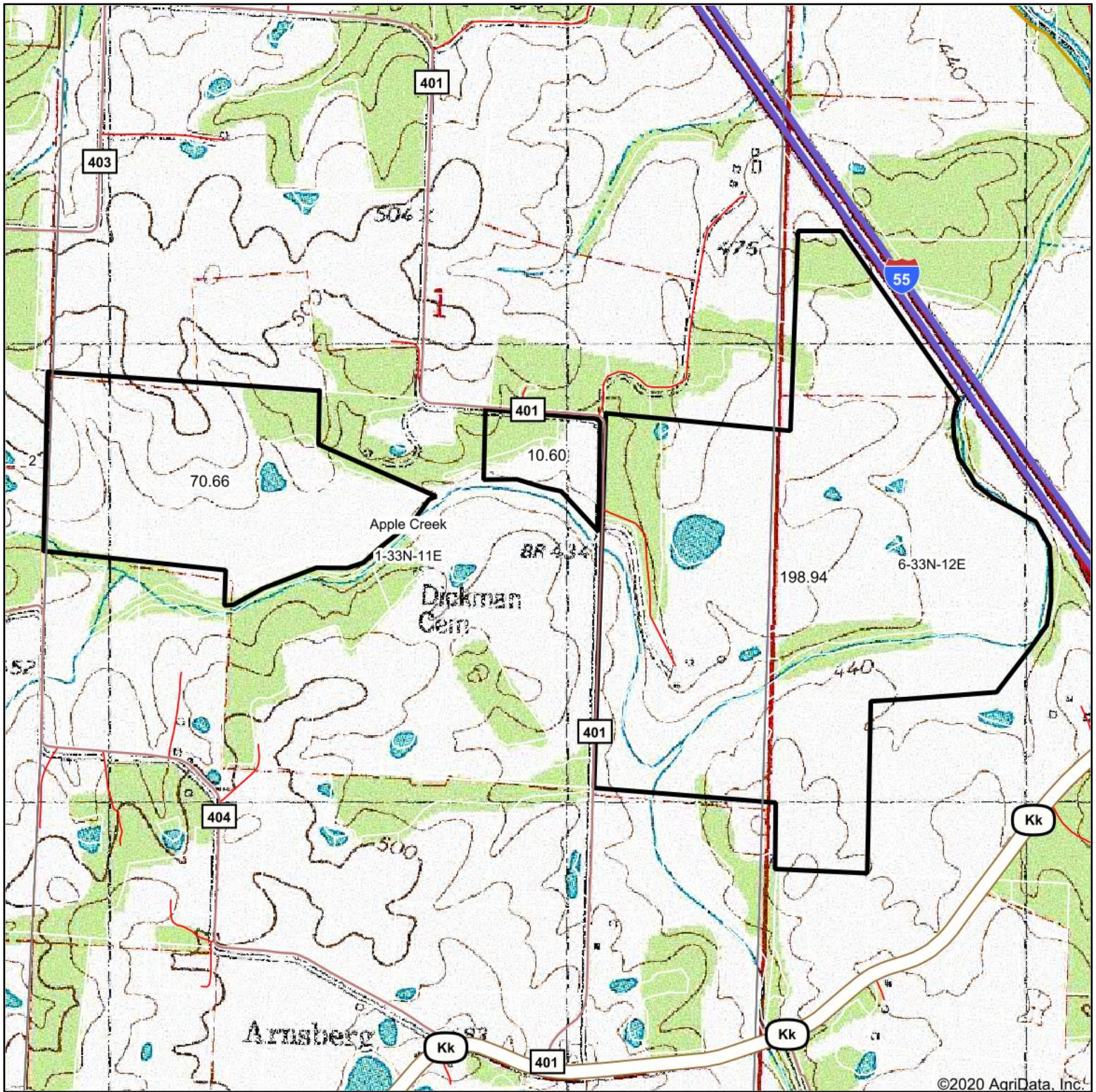
www.AgriDataInc.com



Area Symbol: MO031, Soil Area Version: 24									
Code	Soil Description	Acres	Percent of field	Non-Irr Class	Cor n	Soybeans	Wheat	*n NCCPI Soybeans	
60180	Menfro-Bucklick silt loams, 9 to 14 percent slopes	44.82	25.3%	IVe					63
60165	Menfro silt loam, 2 to 5 percent slopes	40.32	22.7%	Ile	142	43	55		79
60001	Menfro silt loam, 5 to 9 percent slopes, eroded	36.77	20.7%	IIIe					67
66014	Haymond silt loam, 0 to 3 percent slopes, frequently flooded	18.26	10.3%	IIIw					62
66054	Wakeland silt loam, 0 to 2 percent slopes, frequently flooded	12.61	7.1%	IIIw					61
60182	Menfro-Bucklick silt loams, karst, 5 to 20 percent slopes	12.57	7.1%	IVe					46
66024	Wilbur silt loam, 0 to 2 percent slopes, frequently flooded	7.77	4.4%	IIIw	137	45	53		70
60179	Menfro-Bucklick silt loams, 14 to 20 percent slopes	2.51	1.4%	VIe					57
67001	Haymond silt loam, 1 to 3 percent slopes, frequently flooded	1.61	0.9%	IIIw					60
Weighted Average					38.3	11.8	14.8		*n 66.2

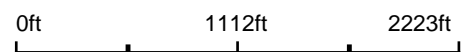
*n: The aggregation method is "Weighted Average using all components"
 Soils data provided by USDA and NRCS.

Topography Map

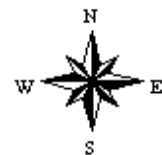


©2020 AgriData, Inc.

map center: 37° 34' 45.43, -89° 46' 29.95



1-33N-11E
Cape Girardeau County
Missouri



8/30/2020



Maps Provided By:



© AgriData, Inc. 2020 www.AgridataInc.com

Field borders provided by Farm Service Agency as of 5/21/2008.