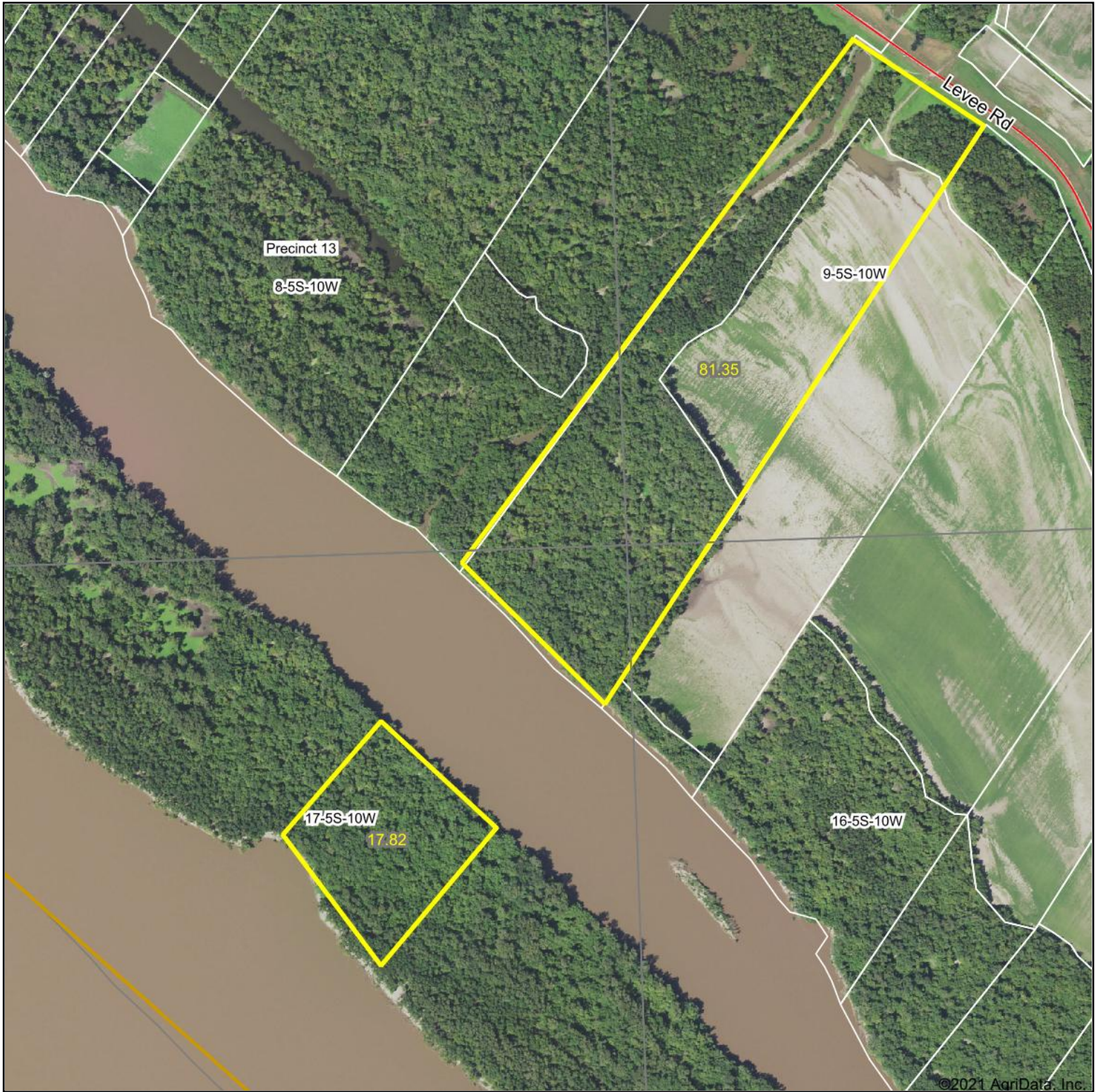


Aerial Map



©2021 AgriData, Inc.

Map Center: 38° 6' 30.15, -90° 13' 14.6



8-5S-10W
Monroe County
Illinois

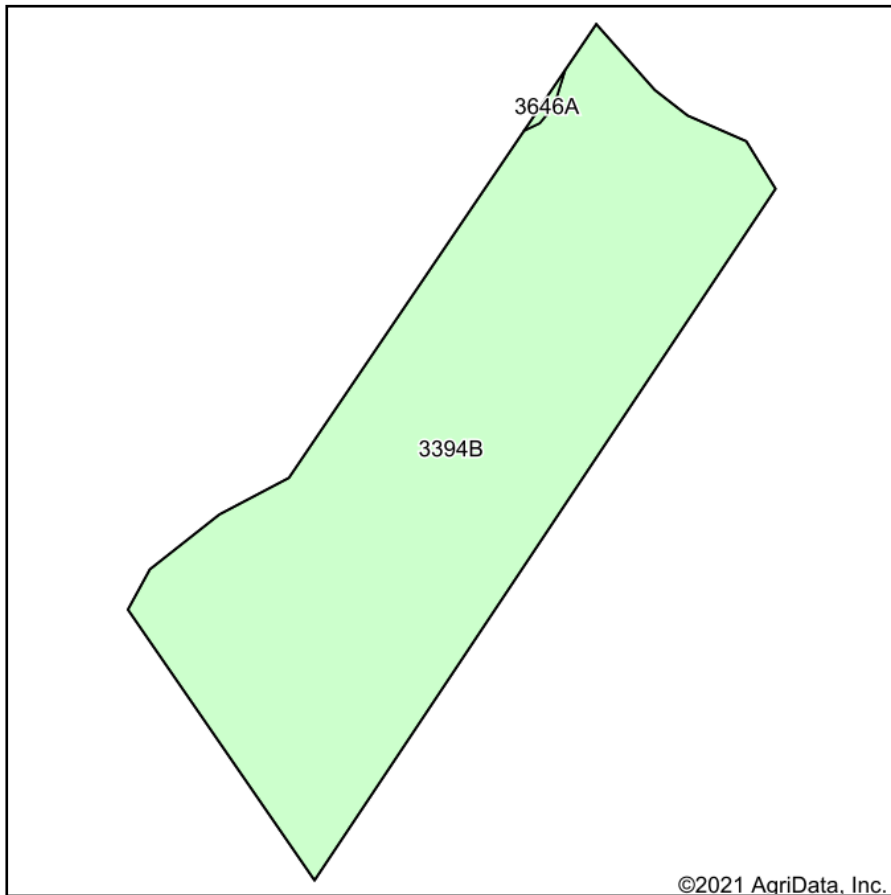


9/22/2021

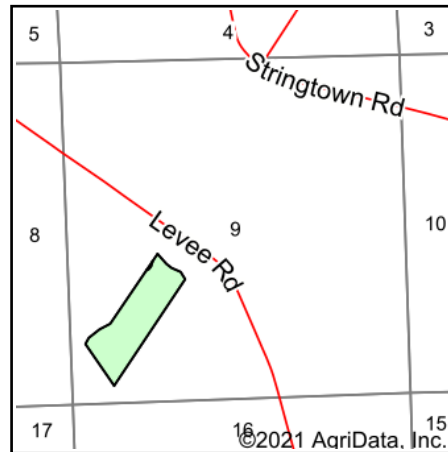
Maps Provided By:
 surety
CUSTOMIZED ONLINE MAPPING
© AgriData, Inc. 2021 www.AgriDataInc.com

Field borders provided by Farm Service Agency as of 5/21/2008.

Soils Map



Soils data provided by USDA and NRCS.



State: **Illinois**
 County: **Monroe**
 Location: **9-5S-10W**
 Township: **Precinct 13**
 Acres: **26.17**
 Date: **9/22/2021**



Maps Provided By:



Area Symbol: IL133, Soil Area Version: 13

Code	Soil Description	Acres	Percent of field	Corn Bu/A	Soybeans Bu/A	Wheat Bu/A	Grass-legume e hay, T/A	Crop productivity index for optimum management
3394B	Haynie silt loam, 2 to 5 percent slopes, frequently flooded	26.11	99.8%	163	52	60	0.00	118
3646A	Fluvaquents, loamy, 0 to 2 percent slopes, frequently flooded	0.06	0.2%				.00	
Weighted Average				162.6	51.9	59.9	0.00	117.7

Table: Optimum Crop Productivity Ratings for Illinois Soil by K.R. Olson and J.M. Lang, Office of Research, ACES, University of Illinois at Champaign-Urbana. Version: 1/2/2012 Amended Table S2 B811

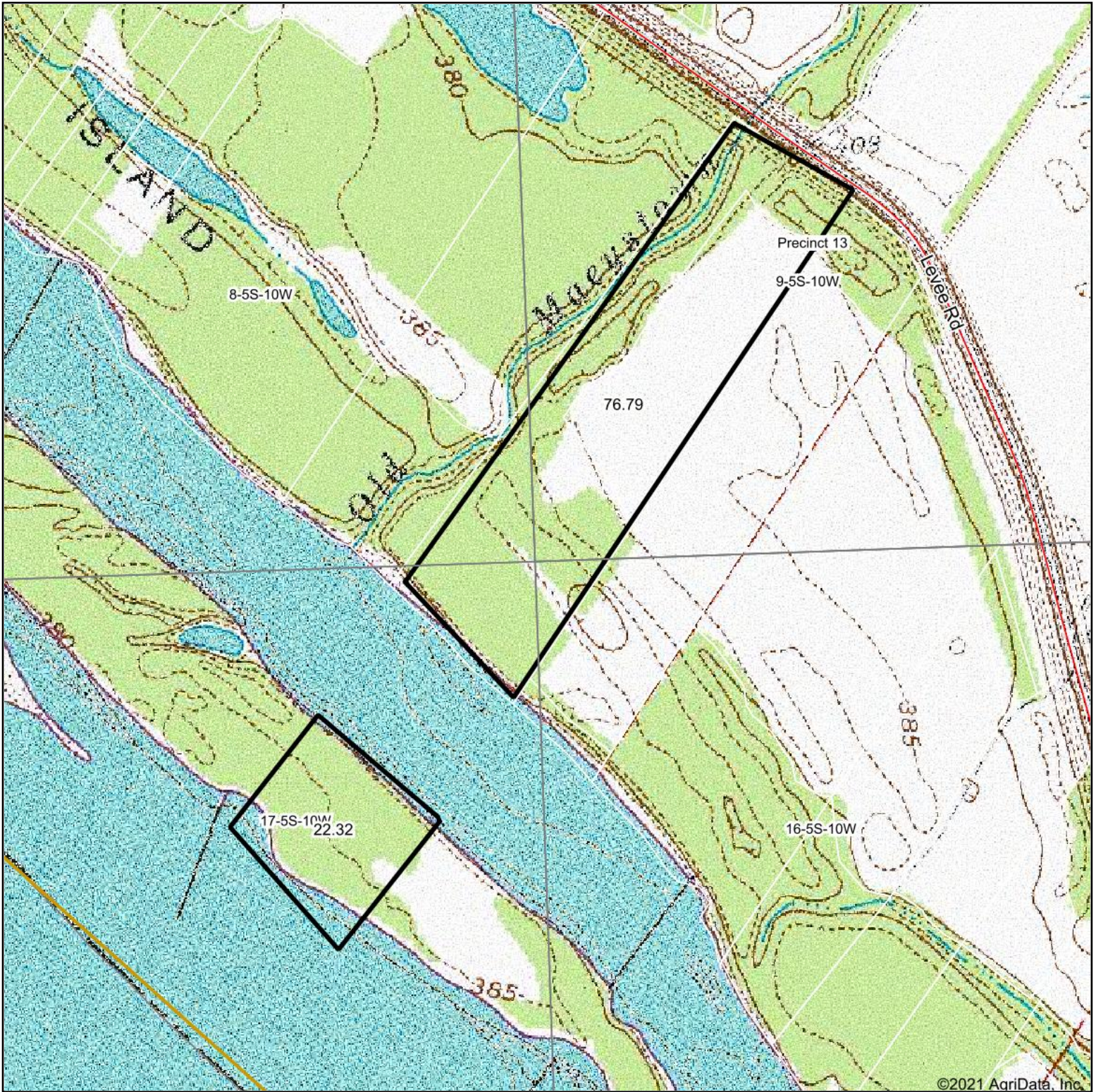
Crop yields and productivity indices for optimum management (B811) are maintained at the following NRES web site: <http://soilproductivity.nres.illinois.edu/>

** Indexes adjusted for slope and erosion according to Bulletin 811 Table S3

e Soils in the well drained group were not rated for grass-legume and are shown with a zero "0".

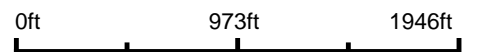
Soils data provided by USDA and NRCS. Soils data provided by University of Illinois at Champaign-Urbana.

Topography Map



©2021 AgriData, Inc.

map center: 38° 6' 31", -90° 13' 8.27"



9-5S-10W
Monroe County
Illinois



9/22/2021



Maps Provided By:



© AgriData, Inc. 2021

www.AgriDataInc.com