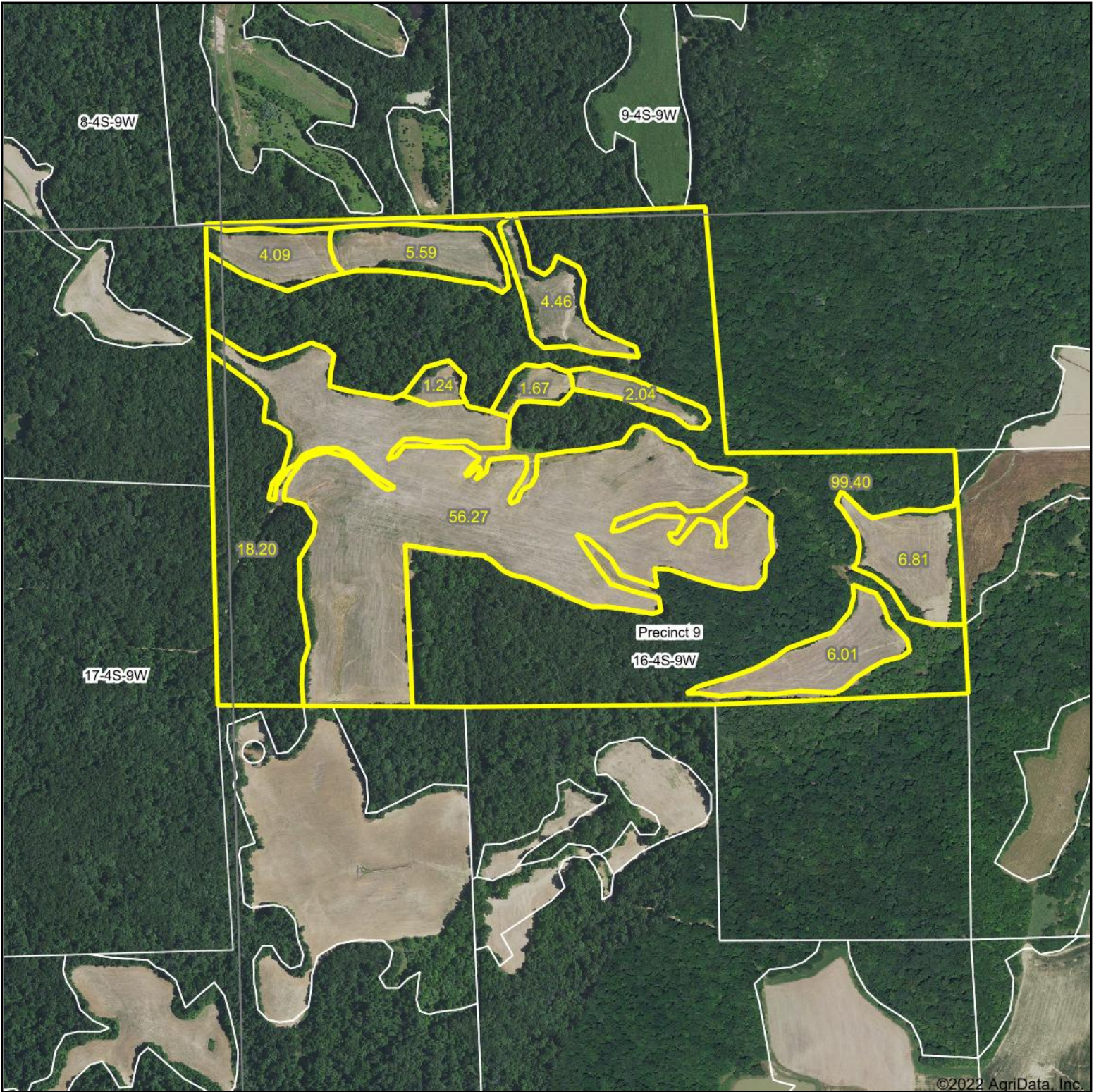
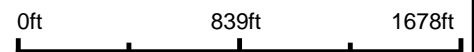


Aerial Map



©2022 AgriData, Inc.

Map Center: 38° 11' 21.95, -90° 6' 13.58



16-4S-9W
Monroe County
Illinois

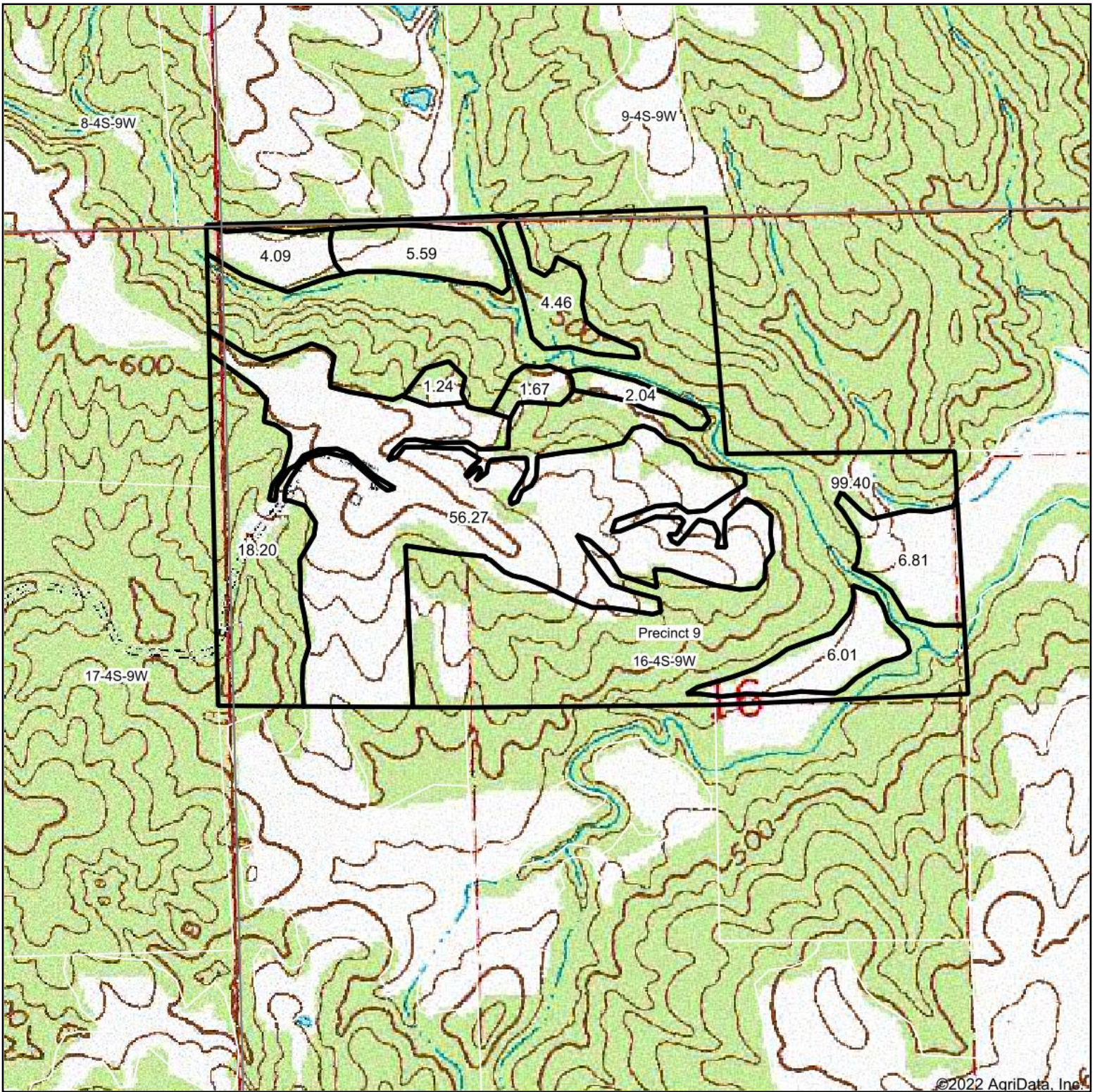


2/23/2022

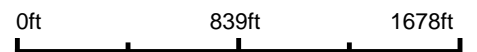
Maps Provided By:
 **surety**
CUSTOMIZED ONLINE MAPPING
© AgriData, Inc. 2021 www.AgriDataInc.com

Field borders provided by Farm Service Agency as of 5/21/2008.

Topography Map



map center: 38° 11' 21.95, -90° 6' 13.58



16-4S-9W
Monroe County
Illinois



2/23/2022



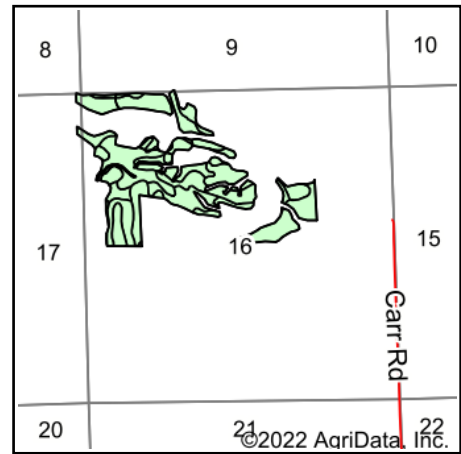
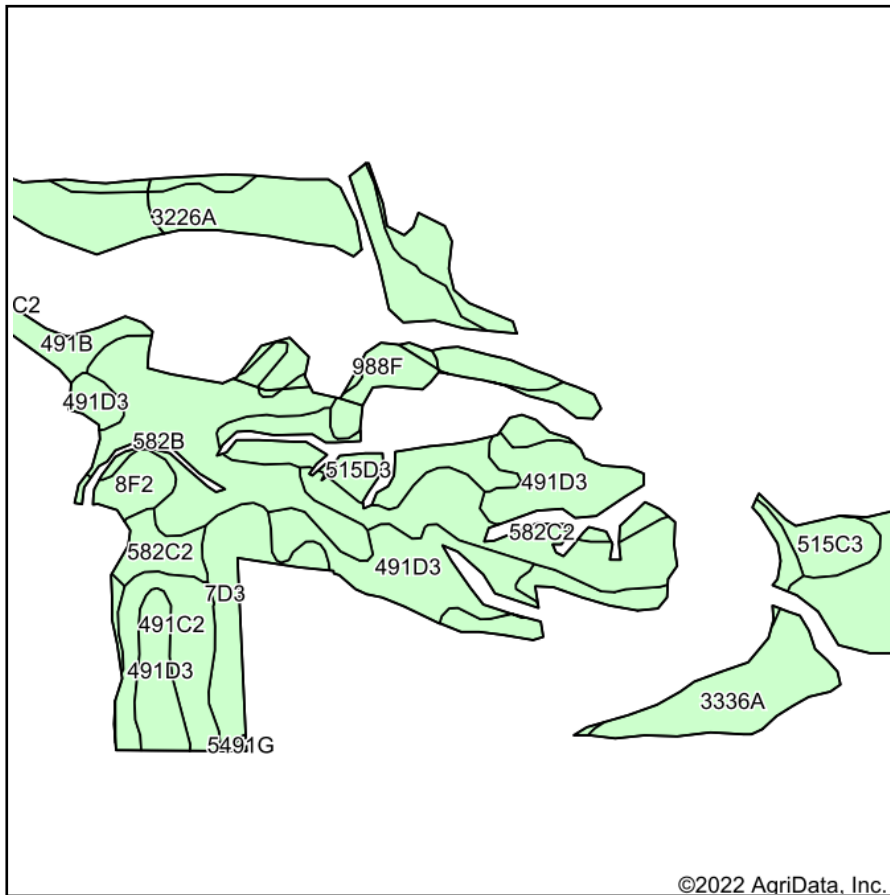
Maps Provided By:



© AgriData, Inc. 2021

www.AgriDataInc.com

Soils Map



State: **Illinois**
 County: **Monroe**
 Location: **16-4S-9W**
 Township: **Precinct 9**
 Acres: **88.18**
 Date: **2/23/2022**



Soils data provided by USDA and NRCS.

Area Symbol: IL133, Soil Area Version: 14

Code	Soil Description	Acres	Percent of field	Corn Bu/A	Soybeans Bu/A	Wheat Bu/A	Grass-legume e hay, T/A	Crop productivity index for optimum management
**491D3	Ruma silty clay loam, 10 to 18 percent slopes, severely eroded	14.51	16.5%	**131	**39	**49	0.00	**94
3226A	Wirt silt loam, 0 to 2 percent slopes, frequently flooded	12.79	14.5%	146	47	55	0.00	106
**582B	Homen silt loam, 2 to 5 percent slopes	11.52	13.1%	**149	**47	**55	0.00	**108
3336A	Wilbur silt loam, 0 to 2 percent slopes, frequently flooded	9.90	11.2%	174	56	66	0.00	128
**988F	Westmore-Neotoma complex, 18 to 35 percent slopes	9.73	11.0%	**82	**28	**33	**2.42	**62
**582C2	Homen silt loam, 5 to 10 percent slopes, eroded	9.01	10.2%	**140	**44	**52	0.00	**101
**515D3	Bunkum silty clay loam, 10 to 18 percent slopes, severely eroded	4.96	5.6%	**118	**41	**45	0.00	**89
**491C2	Ruma silt loam, 5 to 10 percent slopes, eroded	4.93	5.6%	**151	**45	**56	0.00	**108
**7D3	Atlas silty clay loam, 10 to 18 percent slopes, severely eroded	4.58	5.2%	**81	**28	**32	**2.42	**62
**515C3	Bunkum silty clay loam, 5 to 10 percent slopes, severely eroded	2.16	2.4%	**126	**43	**48	0.00	**95
**8F2	Hickory silt loam, 18 to 35 percent slopes, eroded	2.08	2.4%	**80	**27	**32	0.00	**61
**491B	Ruma silt loam, 2 to 5 percent slopes	1.94	2.2%	**160	**48	**59	0.00	**115
5491G	Ruma silt loam, karst, 25 to 60 percent slopes	0.07	0.1%	162	48	60	0.00	116
Weighted Average				133	42.3	50.2	0.39	97.1

Table: Optimum Crop Productivity Ratings for Illinois Soil by K.R. Olson and J.M. Lang, Office of Research, ACES, University of Illinois at Champaign-Urbana. Version: 1/2/2012 Amended Table S2 B811

Crop yields and productivity indices for optimum management (B811) are maintained at the following NRES web site: <http://soilproductivity.nres.illinois.edu/>

** Indexes adjusted for slope and erosion according to Bulletin 811 Table S3

e Soils in the well drained group were not rated for grass-legume and are shown with a zero "0".

Soils data provided by USDA and NRCS. Soils data provided by University of Illinois at Champaign-Urbana.