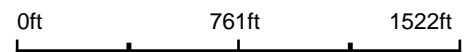


# Aerial Map



Map Center: 37° 18' 4.53, -89° 30' 25.36



**13-14S-4W**  
**Alexander County**  
**Illinois**



3/1/2022



Maps Provided By:



© AgriData, Inc. 2021 www.AgriDataInc.com

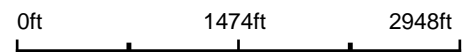
Field borders provided by Farm Service Agency as of 5/21/2008.

# Aerial Map



©2022 AgriData, Inc.

Map Center: 37° 17' 7.55, -89° 30' 38.1



**23-14S-4W**  
**Alexander County**  
**Illinois**



2/28/2022

Maps Provided By:  
 **surety**  
CUSTOMIZED ONLINE MAPPING  
© AgriData, Inc. 2021      www.AgriDataInc.com

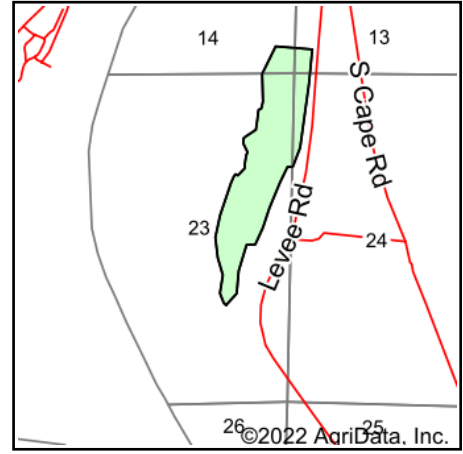
Field borders provided by Farm Service Agency as of 5/21/2008.

# Soils Map



Soils data provided by USDA and NRCS.

©2022 AgriData, Inc.



State: **Illinois**  
 County: **Alexander**  
 Location: **23-14S-4W**  
 Township: **East Cape**  
 Acres: **59.79**  
 Date: **2/16/2022**



Maps Provided By:



© AgriData, Inc. 2021

www.AgriDataInc.com



Area Symbol: IL003, Soil Area Version: 18

Code	Soil Description	Acres	Percent of field	Corn Bu/A	Soybeans Bu/A	Wheat Bu/A	Crop productivity index for optimum management
3449L	Armiesburg-Sarpy complex, 0 to 2 percent slopes, frequently flooded, long duration	59.79	100.0%	151	49	58	113
<b>Weighted Average</b>				<b>151</b>	<b>49</b>	<b>58</b>	<b>113</b>

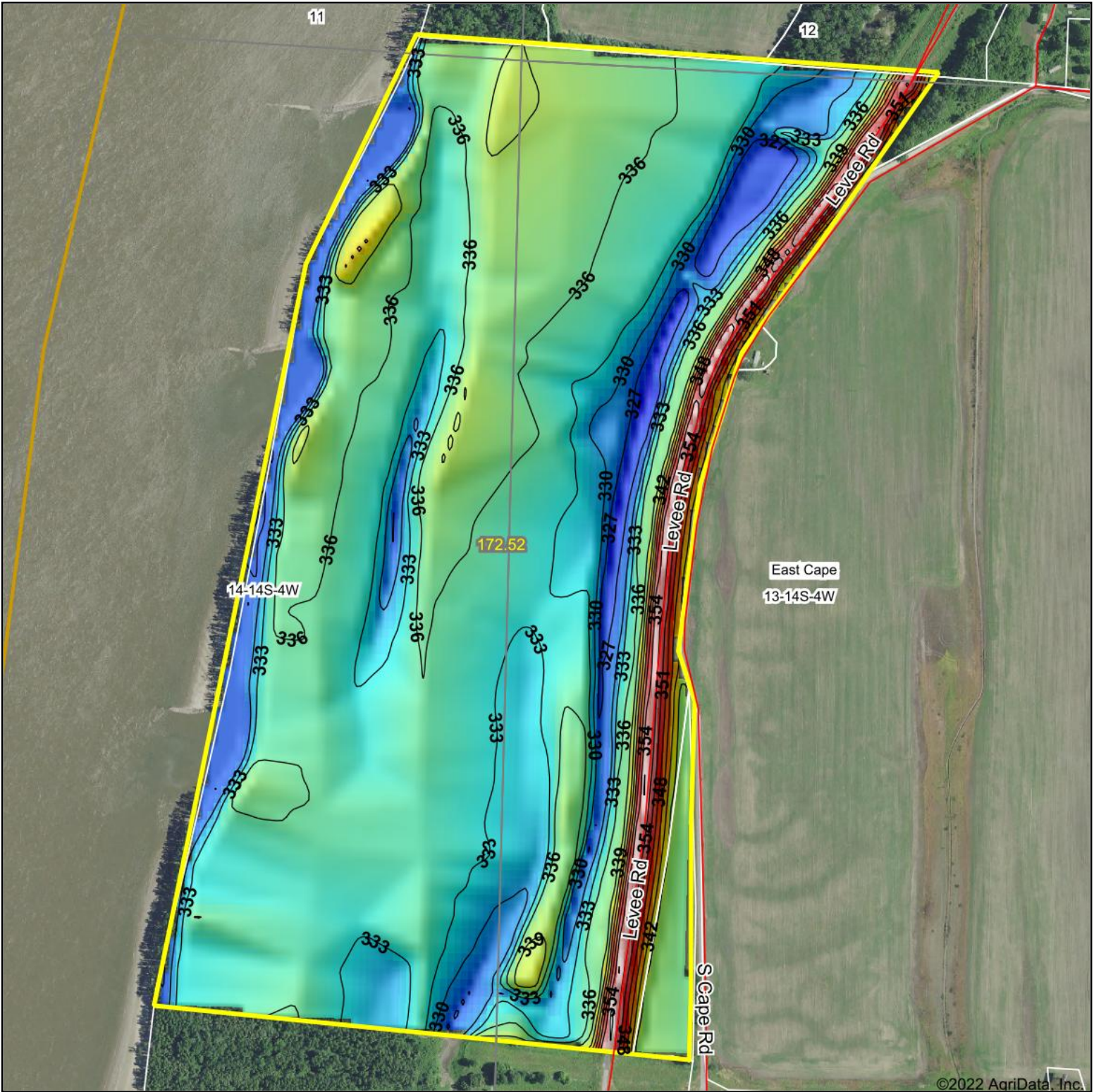
**Table: Optimum Crop Productivity Ratings for Illinois Soil by K.R. Olson and J.M. Lang, Office of Research, ACES, University of Illinois at Champaign-Urbana.** Version: 1/2/2012 Amended Table S2 B811

Crop yields and productivity indices for optimum management (B811) are maintained at the following NRES web site: <http://soilproductivity.nres.illinois.edu/>

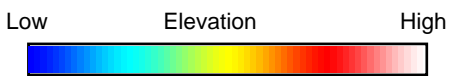
\*\* Indexes adjusted for slope and erosion according to Bulletin 811 Table S3

Soils data provided by USDA and NRCS. Soils data provided by University of Illinois at Champaign-Urbana.

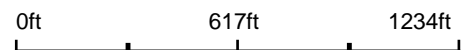
# Topography Hillshade



©2022 AgriData, Inc.



Source: USGS 10 meter dem



Interval(ft): 3

Min: 324.5

Max: 358.1

Range: 33.6

Average: 335.4

Standard Deviation: 5.41 ft



2/28/2022

**13-14S-4W**  
**Alexander County**  
**Illinois**

map center: 37° 18' 4.56, -89° 30' 25.93



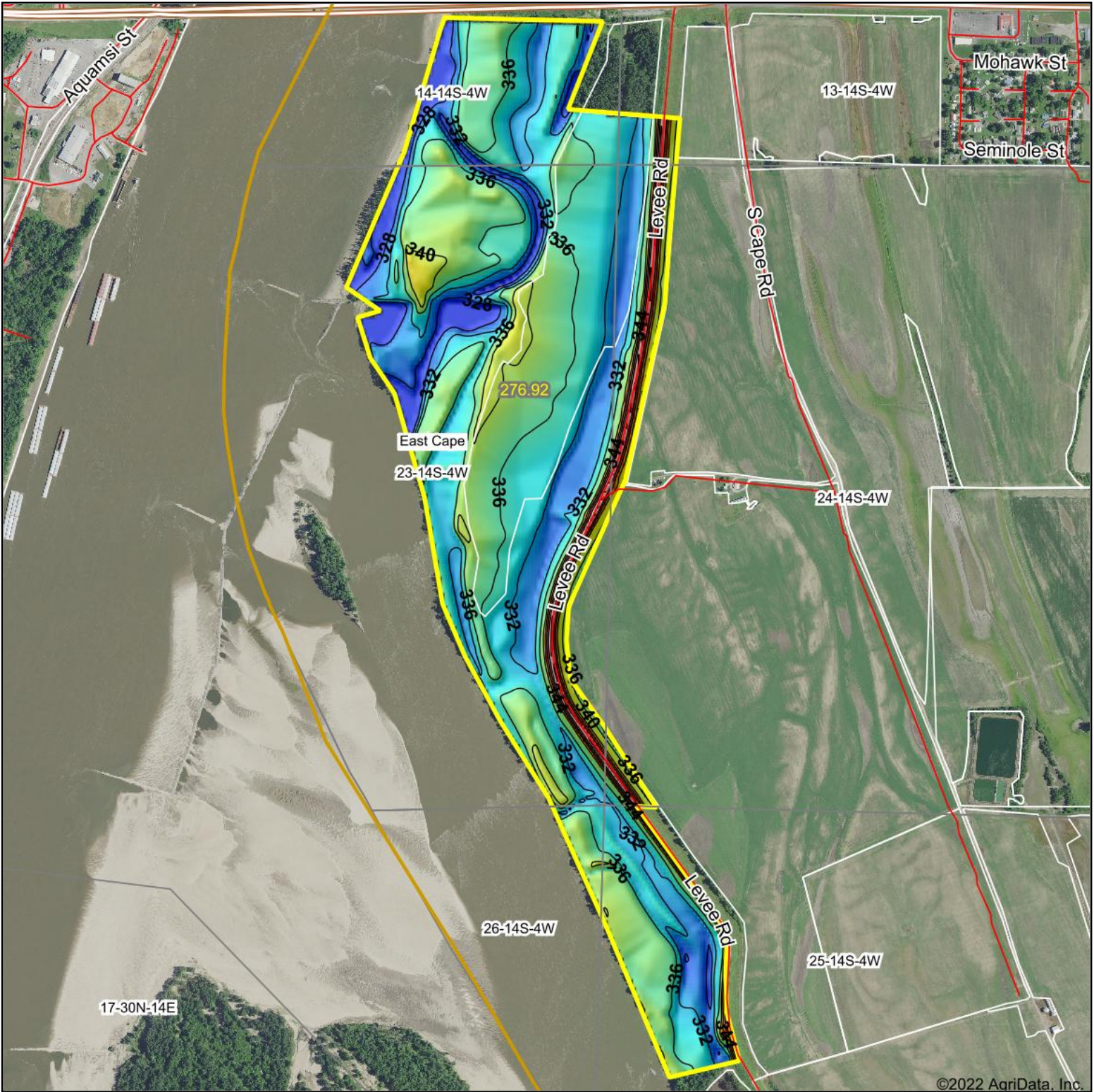
Maps Provided By:



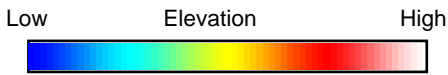
© AgriData, Inc. 2021 www.AgriDataInc.com

Field borders provided by Farm Service Agency as of 5/21/2008.

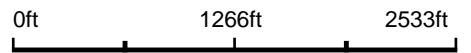
# Topography Hillshade



©2022 AgriData, Inc.



Source: USGS 10 meter dem  
 Interval(ft): 4  
 Min: 326.0  
 Max: 357.7  
 Range: 31.7  
 Average: 335.5  
 Standard Deviation: 5.31 ft



2/28/2022

**23-14S-4W**  
**Alexander County**  
**Illinois**

map center: 37° 17' 7.55, -89° 30' 38.1



Maps Provided By:



© AgriData, Inc. 2021 www.AgriDataInc.com

Field borders provided by Farm Service Agency as of 5/21/2008.