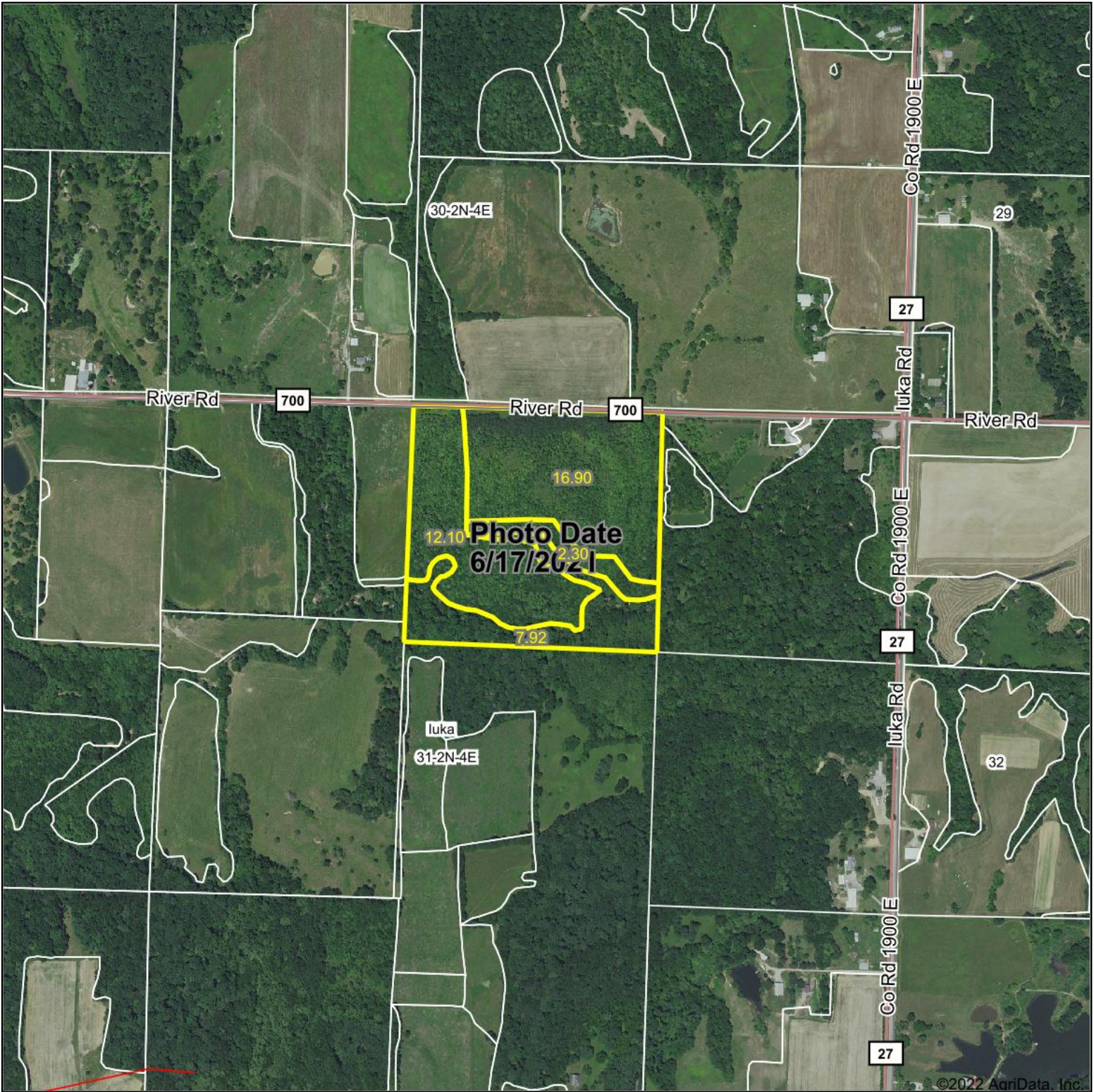
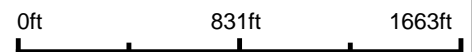


# Aerial Map



Map Center: 38° 34' 29.32, -88° 47' 50.67



31-2N-4E  
Marion County  
Illinois



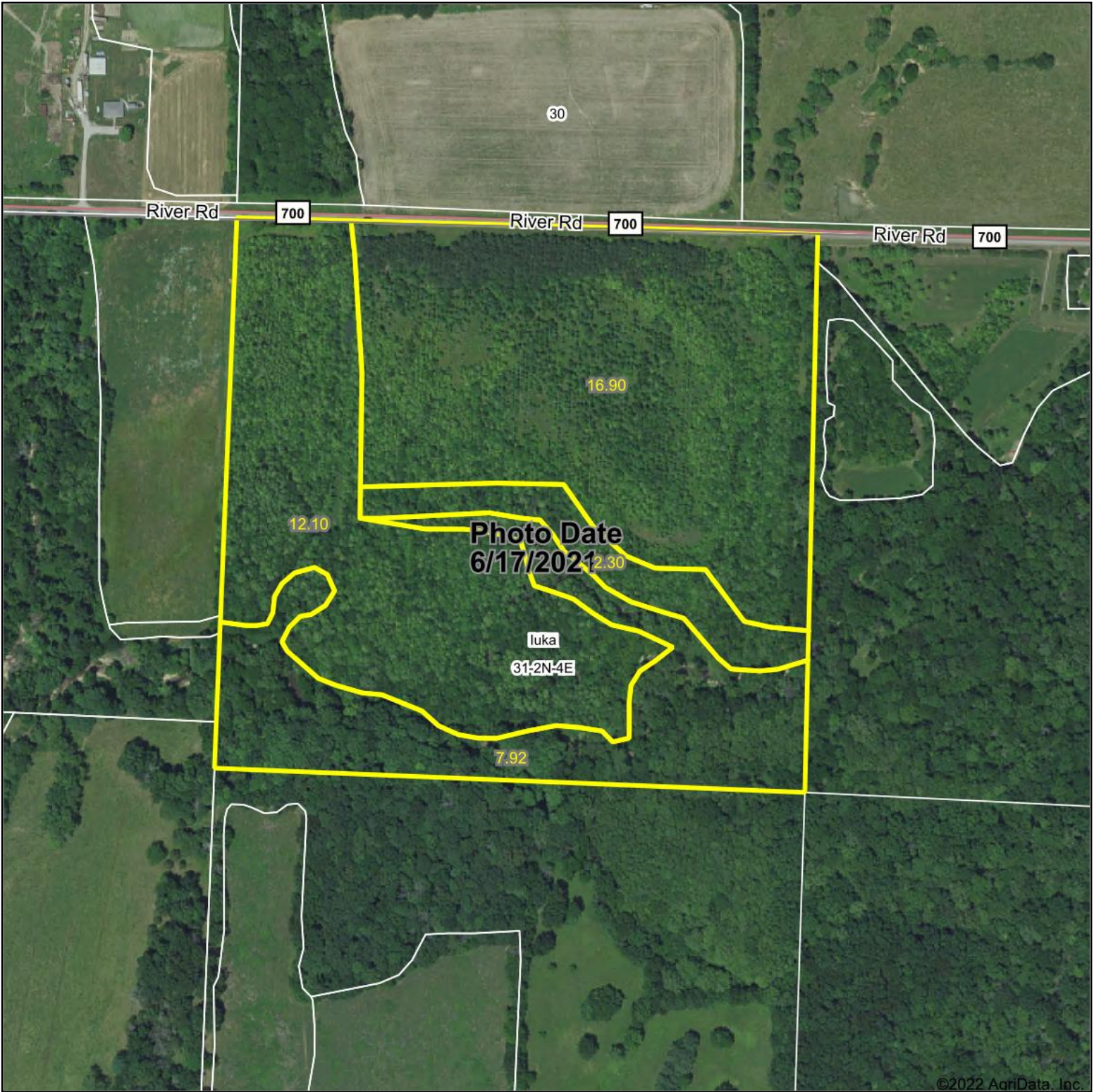
7/25/2022

Maps Provided By:  
 **surety**  
CUSTOMIZED ONLINE MAPPING

© AgriData, Inc. 2021 www.AgriDataInc.com

Field borders provided by Farm Service Agency as of 5/21/2008.

# Aerial Map



Map Center: 38° 34' 29.32, -88° 47' 50.68



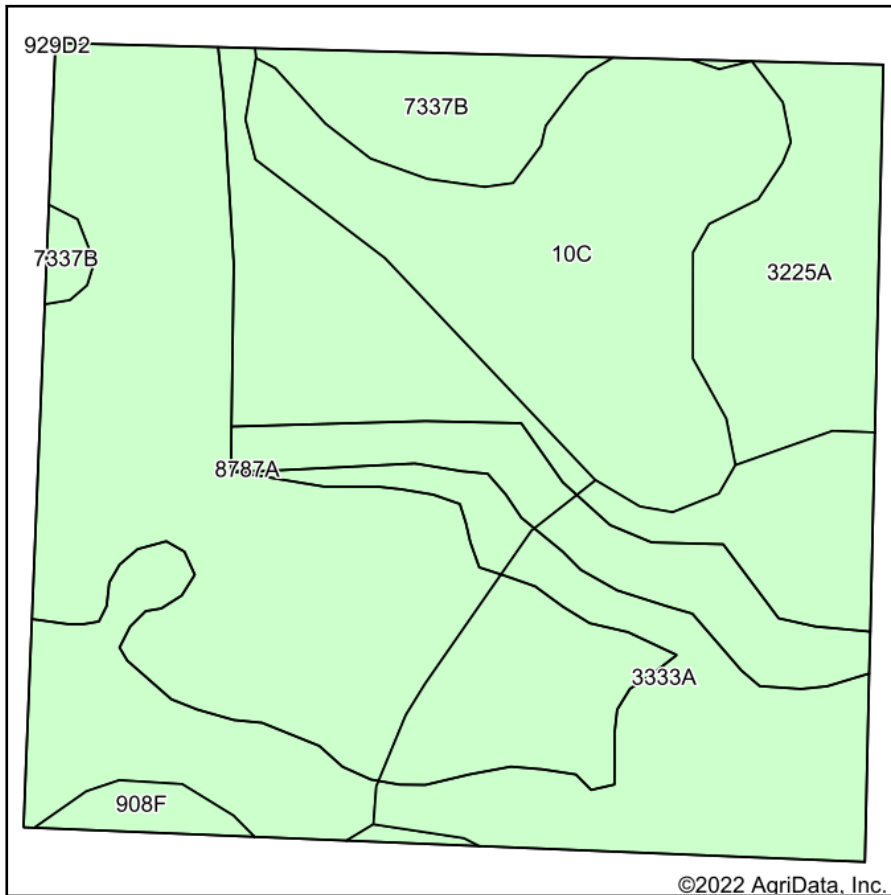
**31-2N-4E**  
**Marion County**  
**Illinois**



Maps Provided By:  
**surety**  
CUSTOMIZED ONLINE MAPPING  
© AgriData, Inc. 2021 www.AgriDataInc.com

Field borders provided by Farm Service Agency as of 5/21/2008.

# Soils Map



Soils data provided by USDA and NRCS.



State: **Illinois**  
 County: **Marion**  
 Location: **31-2N-4E**  
 Township: **luka**  
 Acres: **39.22**  
 Date: **7/25/2022**



Maps Provided By:  
  
 CUSTOMIZED ONLINE MAPPING  
 © AgriData, Inc. 2021 www.AgriDataInc.com



Area Symbol: IL121, Soil Area Version: 18

Code	Soil Description	Acres	Percent of field	Corn Bu/A	Soybeans Bu/A	Wheat Bu/A	Grass-legume e hay, T/A	Crop productivity index for optimum management
8787A	Banlic silt loam, 0 to 2 percent slopes, occasionally flooded	17.07	43.5%	142	47	56	4.64	106
3333A	Wakeland silt loam, 0 to 2 percent slopes, frequently flooded	9.34	23.8%	174	56	68	5.14	128
**10C	Plumfield silty clay loam, 5 to 10 percent slopes	6.94	17.7%	**103	**34	**39	**3.37	**78
3225A	Holton silt loam, 0 to 2 percent slopes, frequently flooded	3.34	8.5%	135	43	50	4.26	100
7337B	Creal silt loam, 2 to 5 percent slopes, rarely flooded	1.99	5.1%	151	47	59	0.00	110
**908F	Hickory-Kell silt loams, 18 to 35 percent slopes	0.54	1.4%	**87	**29	**34	**2.81	**67
<b>Weighted Average</b>				<b>141.8</b>	<b>46.3</b>	<b>55.2</b>	<b>4.24</b>	<b>105.4</b>

**Table: Optimum Crop Productivity Ratings for Illinois Soil by K.R. Olson and J.M. Lang, Office of Research, ACES, University of Illinois at Champaign-Urbana.** Version: 1/2/2012 Amended Table S2 B811

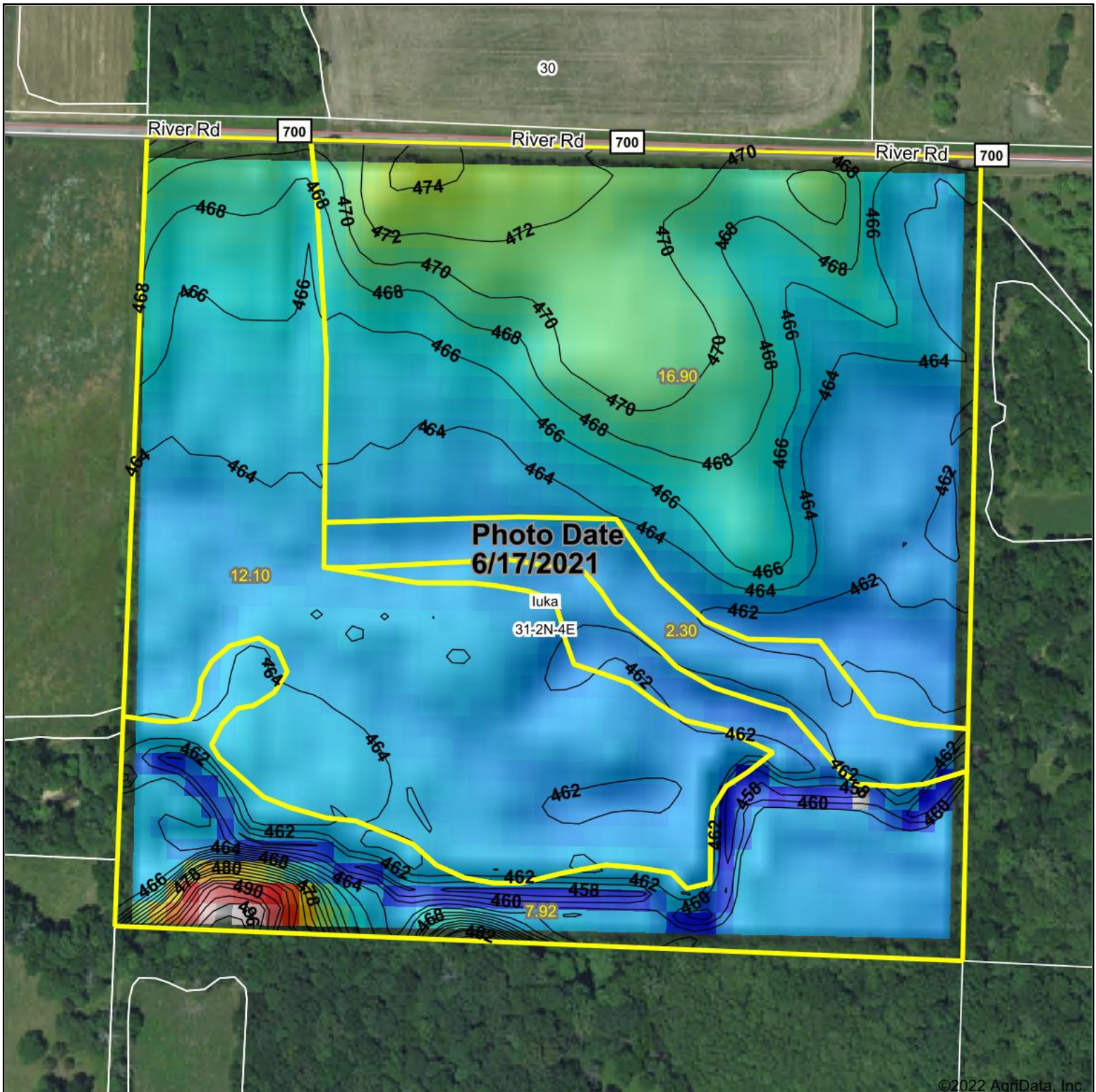
Crop yields and productivity indices for optimum management (B811) are maintained at the following NRES web site: <http://soilproductivity.nres.illinois.edu/>

\*\* Indexes adjusted for slope and erosion according to Bulletin 811 Table S3

e Soils in the well drained group were not rated for grass-legume and are shown with a zero "0".

Soils data provided by USDA and NRCS. Soils data provided by University of Illinois at Champaign-Urbana.

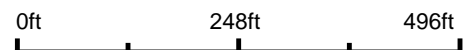
# Topography Hillshade



©2022 AgriData, Inc.



Source: USGS 10 meter dem



Interval(ft): 2

Min: 456.0

Max: 497.7

Range: 41.7

Average: 465.1

Standard Deviation: 4.13 ft



7/25/2022

**31-2N-4E**  
**Marion County**  
**Illinois**

map center: 38° 34' 29.32, -88° 47' 50.68



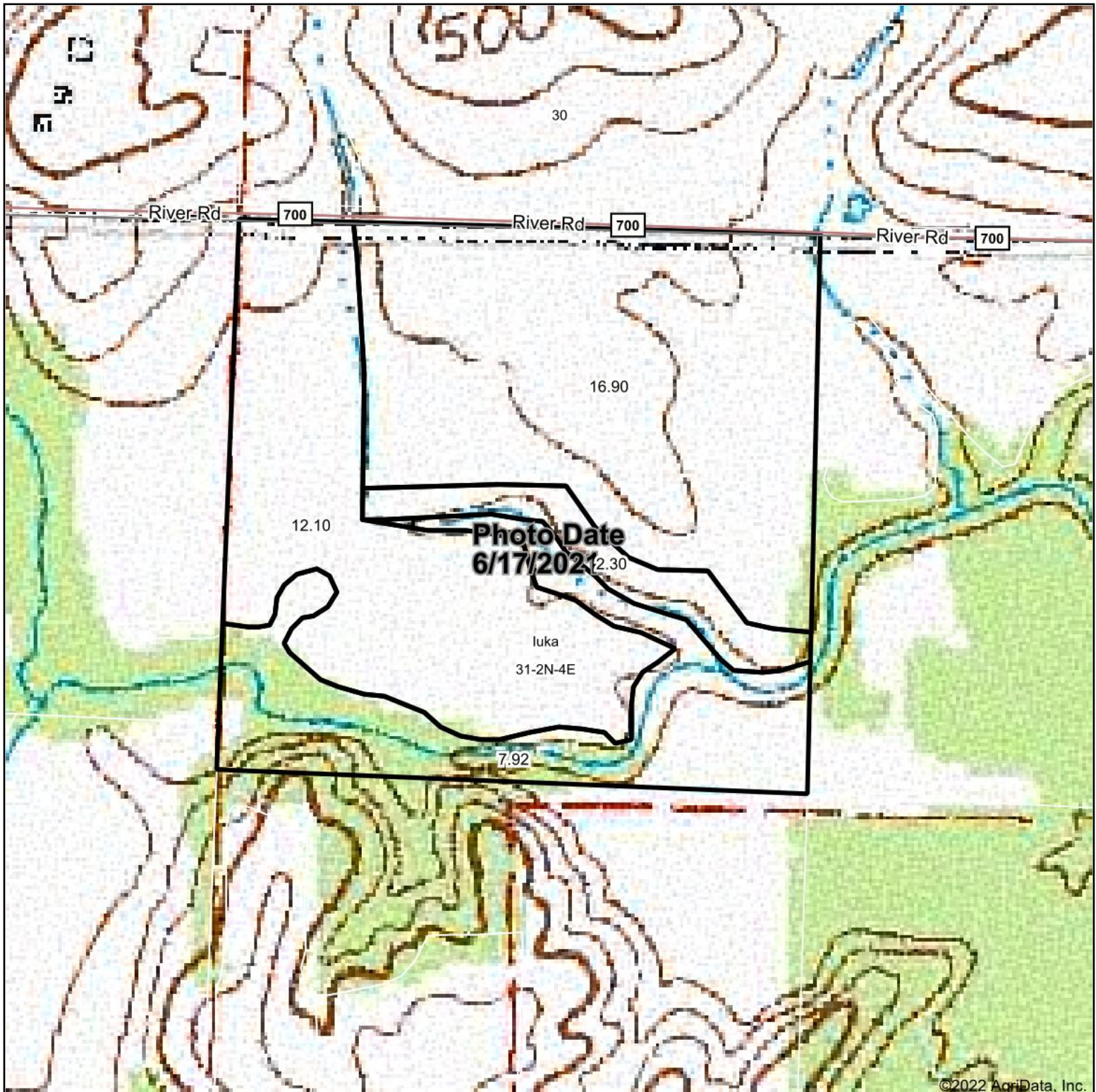
Maps Provided By:



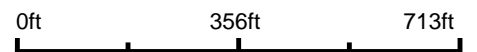
© AgriData, Inc. 2021 www.AgriDataInc.com

Field borders provided by Farm Service Agency as of 5/21/2008.

# Topography Map



map center: 38° 34' 29.32, -88° 47' 50.68



**31-2N-4E**  
**Marion County**  
**Illinois**



7/25/2022



Maps Provided By:

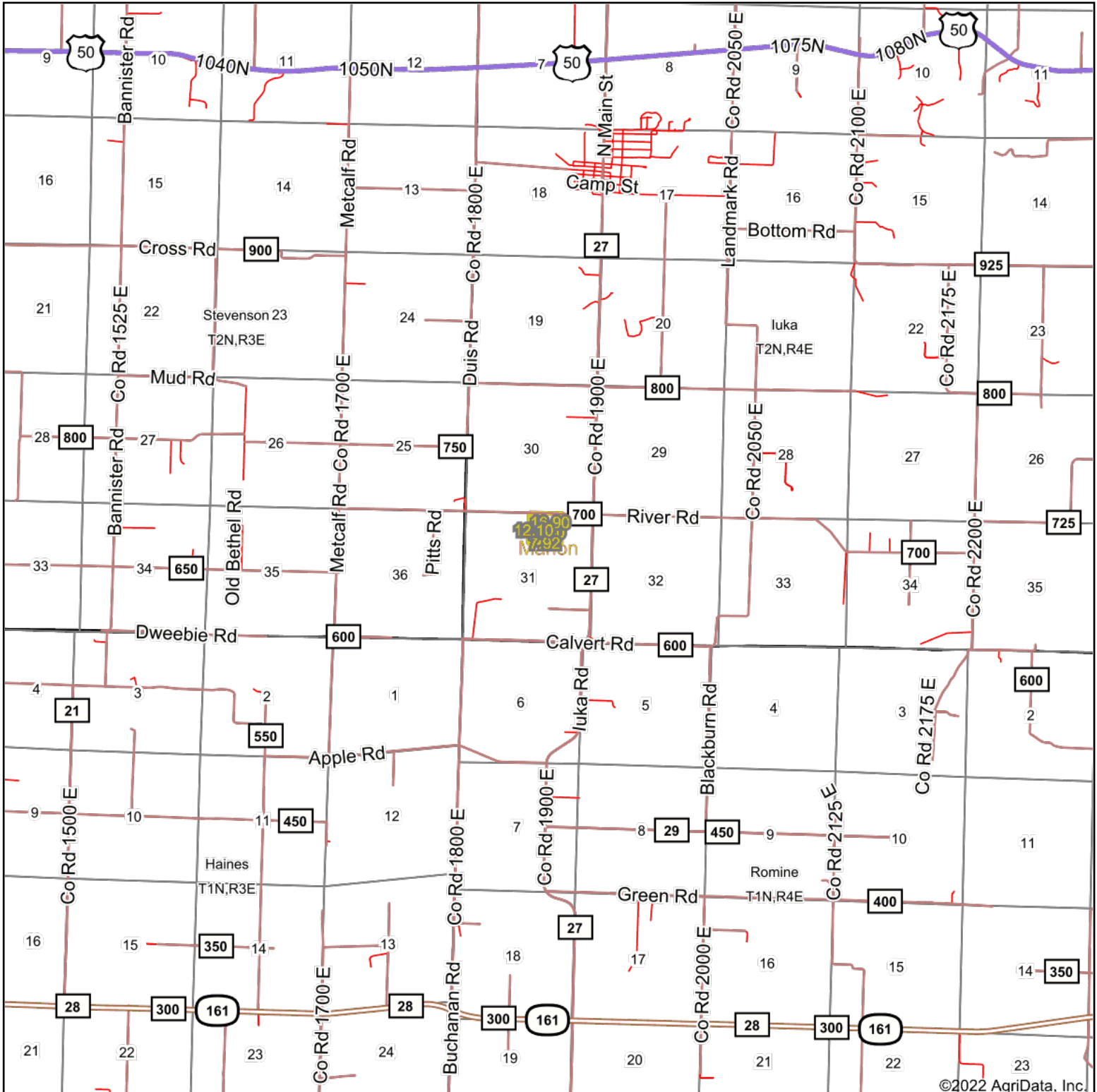


© AgriData, Inc. 2021

www.AgridataInc.com

Field borders provided by Farm Service Agency as of 5/21/2008.

# Overview Map



map center: 38° 34' 22.56, -88° 47' 49.41

0ft 6437ft 12874ft



Maps Provided By

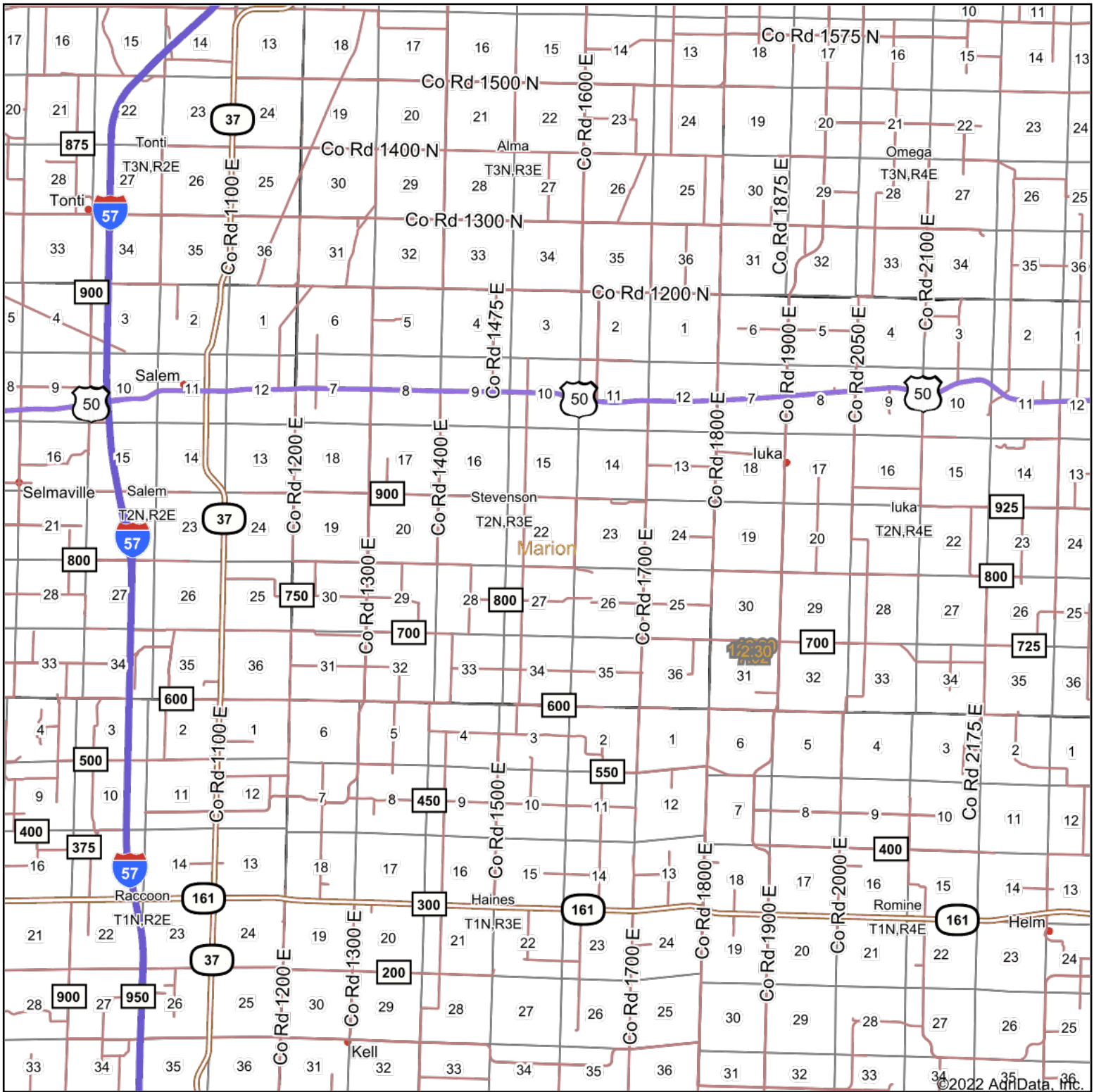


© AgriData, Inc. 2021 www.AgriDataInc.com



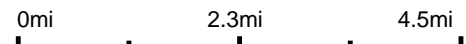
7/25/2022

# Overview Map



©2022 AgriData, Inc.

map center: 38° 35' 43.88, -88° 51' 12.03



7/25/2022



Maps Provided By  
**surety**  
CUSTOMIZED ONLINE MAPPING  
© AgriData, Inc. 2021 www.AgriDataInc.com