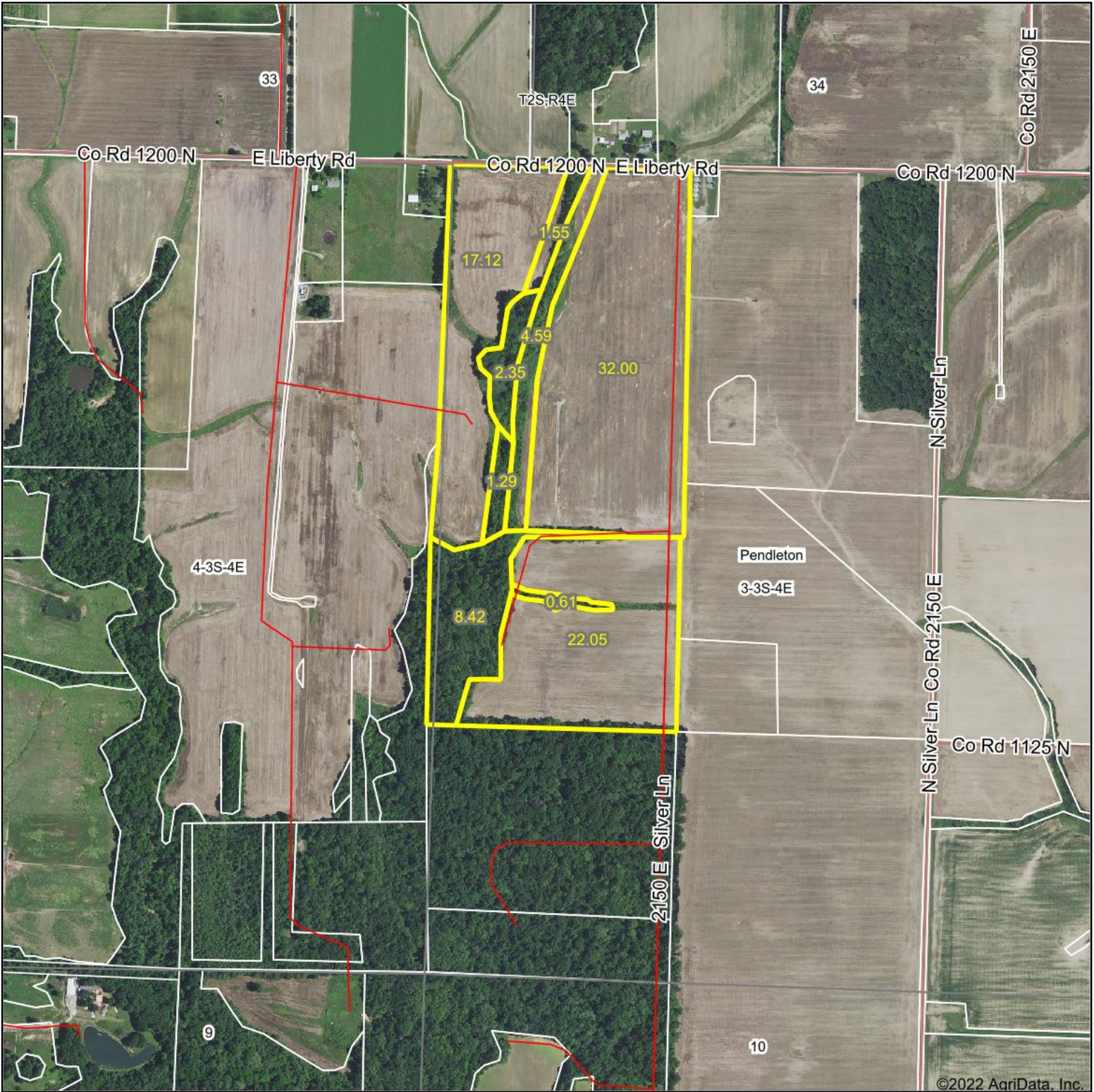
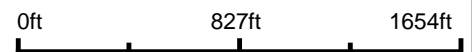


Aerial Map



Map Center: 38° 17' 35.63, -88° 45' 22.45



3-3S-4E
Jefferson County
Illinois

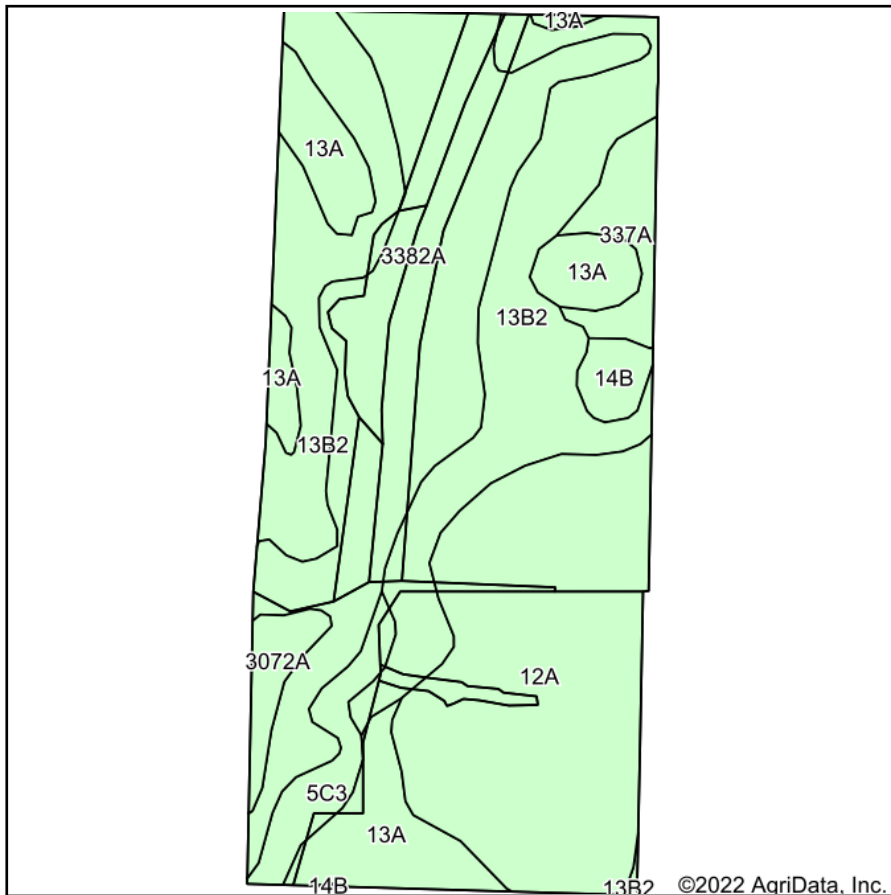


10/4/2022

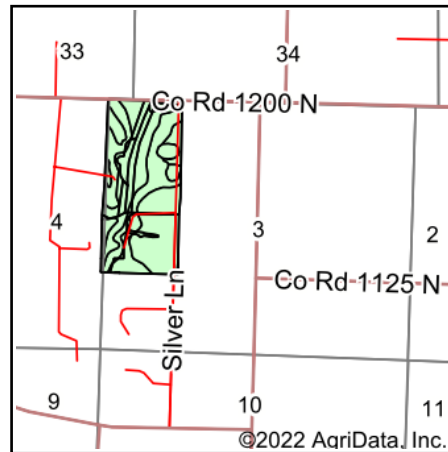
Maps Provided By:
 surety
CUSTOMIZED ONLINE MAPPING
© AgriData, Inc. 2021 www.AgriDataInc.com

Field borders provided by Farm Service Agency as of 5/21/2008.

Soils Map



Soils data provided by USDA and NRCS.



State: **Illinois**
 County: **Jefferson**
 Location: **3-3S-4E**
 Township: **Pendleton**
 Acres: **89.98**
 Date: **10/4/2022**



Maps Provided By:

 © AgriData, Inc. 2021 www.AgriDataInc.com



Area Symbol: IL081, Soil Area Version: 14

Code	Soil Description	Acres	Percent of field	Corn Bu/A	Soybeans Bu/A	Wheat Bu/A	Grass-legume e hay, T/A	Crop productivity index for optimum management
3382A	Belknap silt loam, 0 to 2 percent slopes, frequently flooded	24.06	26.7%	156	52	63	4.89	117
**13B2	Bluford silt loam, 2 to 5 percent slopes, eroded	23.73	26.4%	**129	**42	**52	**3.22	**96
12A	Wynoose silt loam, 0 to 2 percent slopes	23.57	26.2%	128	42	51	4.26	97
13A	Bluford silt loam, 0 to 2 percent slopes	9.70	10.8%	136	44	55	3.39	101
**5C3	Blair silty clay loam, 5 to 10 percent slopes, severely eroded	3.01	3.3%	**102	**33	**41	**3.25	**77
337A	Creal silt loam, 0 to 2 percent slopes	2.84	3.2%	151	47	59	0.00	110
3072A	Sharon silt loam, 0 to 2 percent slopes, frequently flooded	1.73	1.9%	164	53	63	0.00	122
**14B	Ava silt loam, 2 to 5 percent slopes	1.34	1.5%	**134	**44	**54	0.00	**99
Weighted Average				137.3	45	55.1	3.75	102.8

Table: Optimum Crop Productivity Ratings for Illinois Soil by K.R. Olson and J.M. Lang, Office of Research, ACES, University of Illinois at Champaign-Urbana. Version: 1/2/2012 Amended Table S2 B811

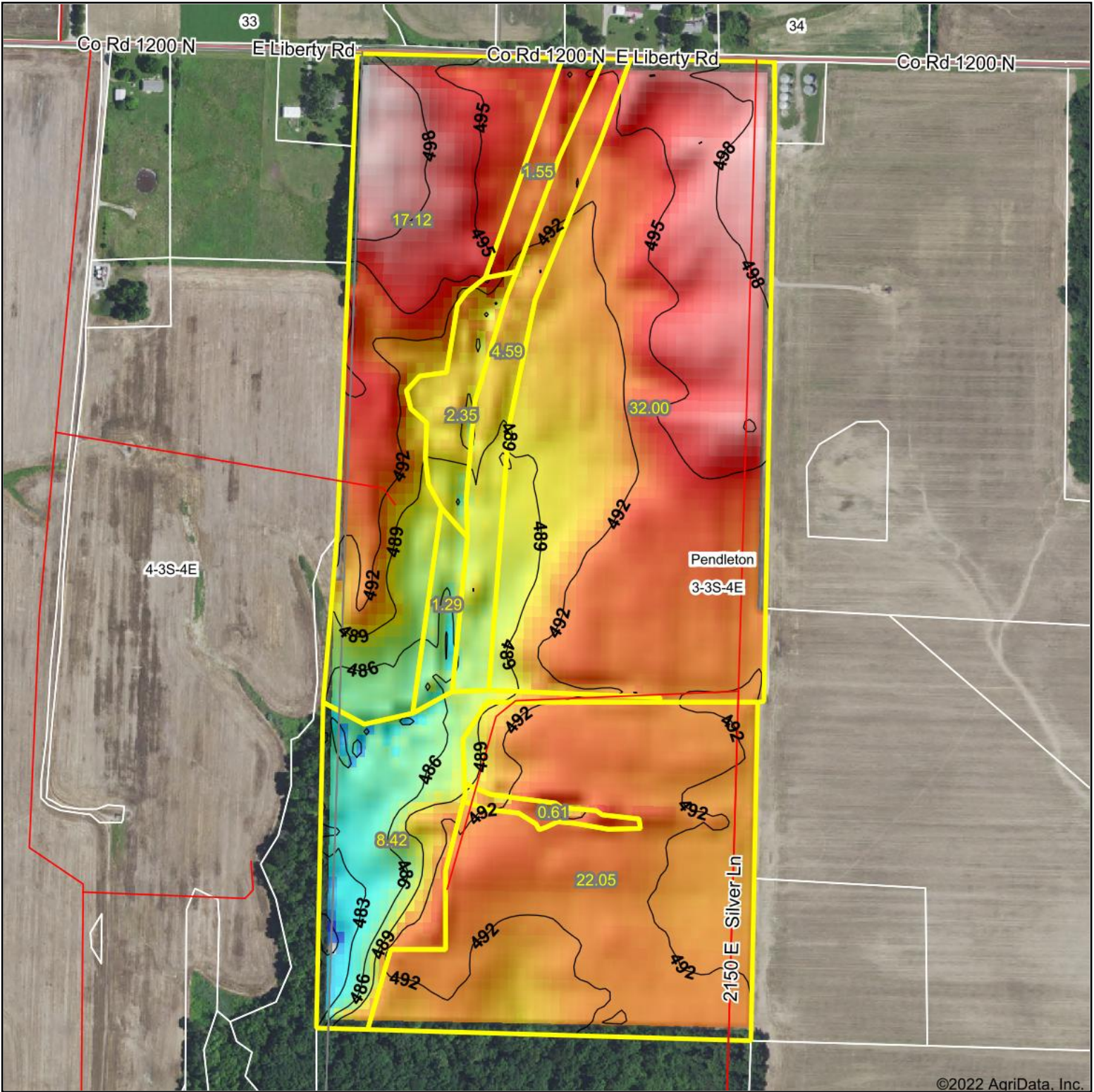
Crop yields and productivity indices for optimum management (B811) are maintained at the following NRES web site: <http://soilproductivity.nres.illinois.edu/>

** Indexes adjusted for slope and erosion according to Bulletin 811 Table S3

e Soils in the well drained group were not rated for grass-legume and are shown with a zero "0".

Soils data provided by USDA and NRCS. Soils data provided by University of Illinois at Champaign-Urbana.

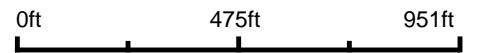
Topography Hillshade



©2022 AgriData, Inc.



Source: USGS 10 meter dem
 Interval(ft): 3
 Min: 476.4
 Max: 501.3
 Range: 24.9
 Average: 492.1
 Standard Deviation: 3.61 ft



3-3S-4E
Jefferson County
Illinois

map center: 38° 17' 35.63, -88° 45' 22.45



Maps Provided By:



© AgriData, Inc. 2021 www.AgriDataInc.com

Field borders provided by Farm Service Agency as of 5/21/2008.