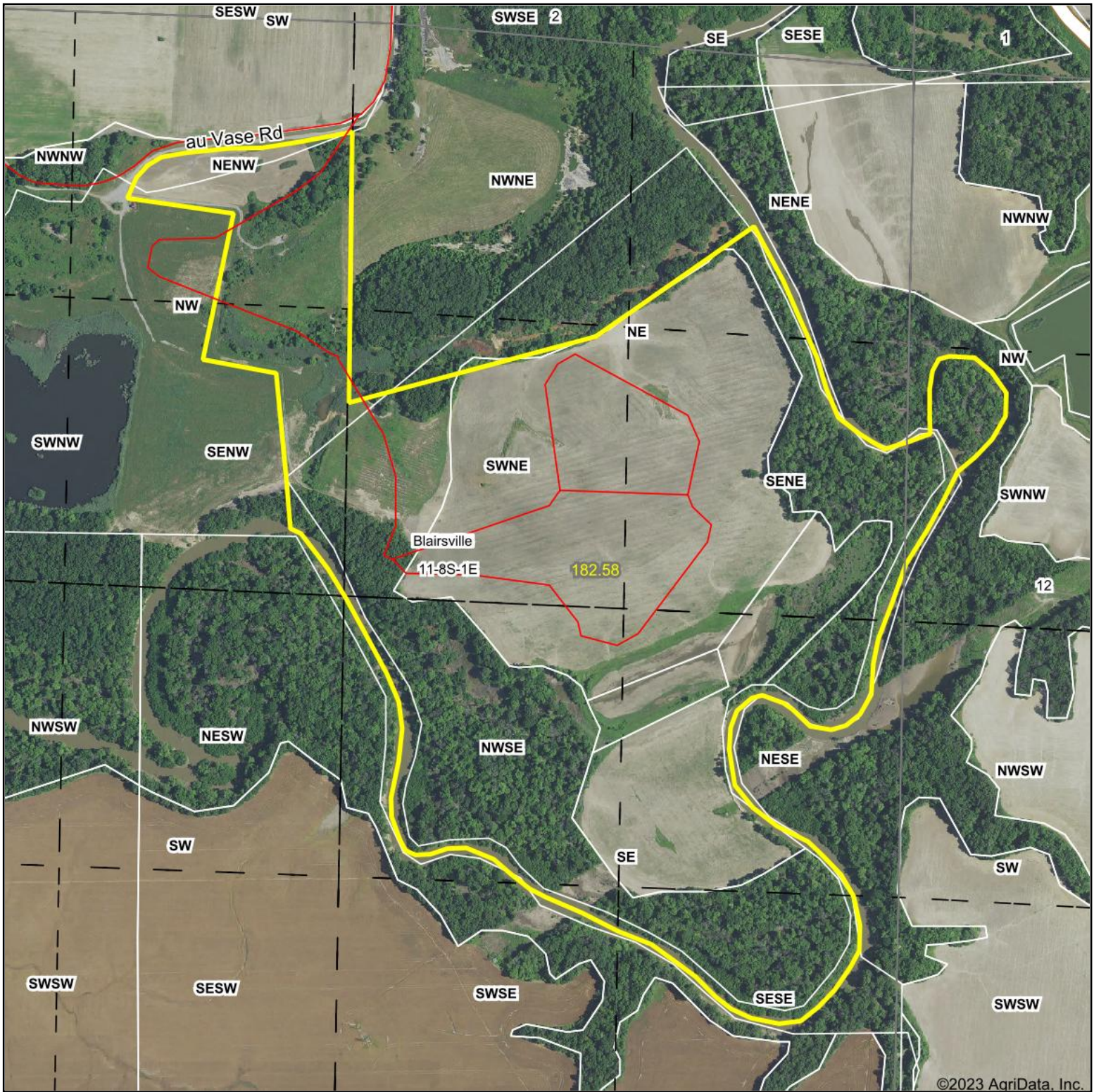
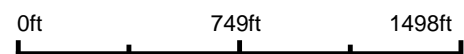


Aerial Map



©2023 AgriData, Inc.

Map Center: 37° 50' 28.85, -89° 3' 54.19



Maps Provided By:



© AgriData, Inc. 2021 www.AgriDataInc.com

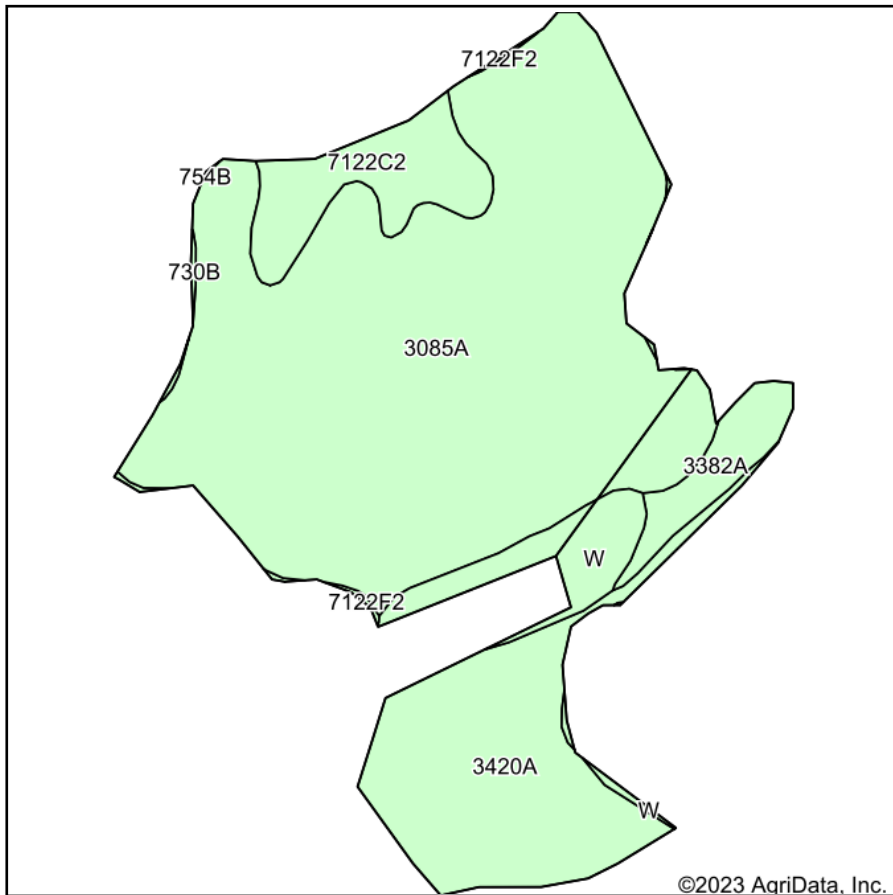
11-8S-1E
Williamson County
Illinois



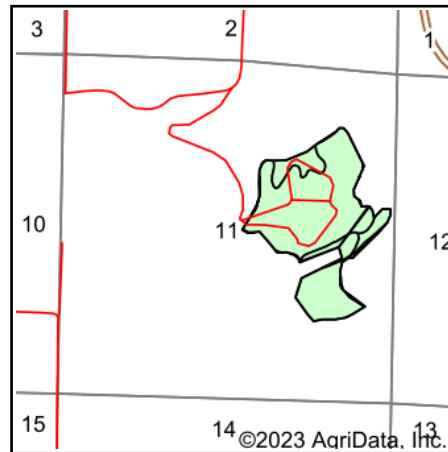
1/10/2023

Field borders provided by Farm Service Agency as of 5/21/2008.

Soils Map



Soils data provided by USDA and NRCS.



State: **Illinois**
 County: **Williamson**
 Location: **11-8S-1E**
 Township: **Blairsville**
 Acres: **83.64**
 Date: **1/10/2023**



Maps Provided By:



© AgriData, Inc. 2021

www.AgriDataInc.com



Area Symbol: IL199, Soil Area Version: 17

Code	Soil Description	Acres	Percent of field	Corn Bu/A	Soybeans Bu/A	Wheat Bu/A	Crop productivity index for optimum management
3085A	Jacob silty clay, 0 to 2 percent slopes, frequently flooded	56.02	67.0%	105	39	43	82
3420A	Piopolis silty clay loam, 0 to 2 percent slopes, frequently flooded	14.90	17.8%	142	48	59	108
7122C2	Colp silt loam, 5 to 10 percent slopes, eroded, rarely flooded	5.64	6.7%	134	42	56	98
W	Water	3.82	4.6%				
3382A	Belknap silt loam, 0 to 2 percent slopes, frequently flooded	2.88	3.4%	156	52	63	117
7122F2	Colp silt loam, 18 to 35 percent slopes, eroded, rarely flooded	0.25	0.3%	134	42	56	98
730B	Bethesda gravelly silt loam, 2 to 7 percent slopes	0.13	0.2%				
Weighted Average				110.4	39.4	45.4	85.1

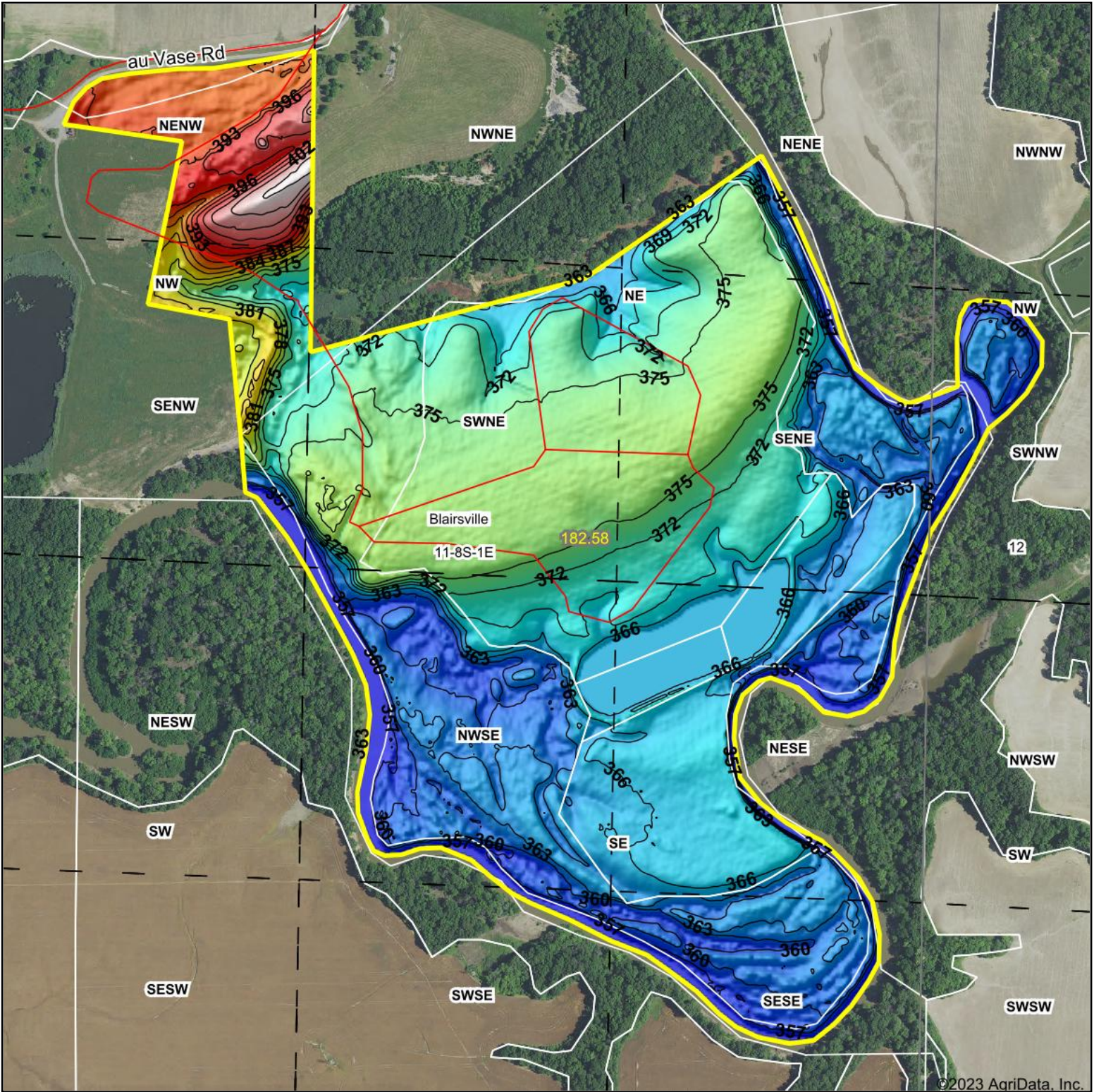
Table: Optimum Crop Productivity Ratings for Illinois Soil by K.R. Olson and J.M. Lang, Office of Research, ACES, University of Illinois at Champaign-Urbana. Version: 1/2/2012 Amended Table S2 B811

Crop yields and productivity indices for optimum management (B811) are maintained at the following NRES web site: <http://soilproductivity.nres.illinois.edu/>

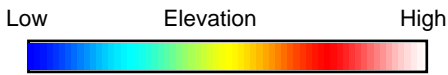
** Indexes adjusted for slope and erosion according to Bulletin 811 Table S3

Soils data provided by USDA and NRCS. Soils data provided by University of Illinois at Champaign-Urbana.

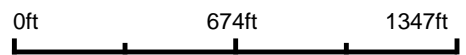
Topography Hillshade



©2023 AgriData, Inc.



Source: USGS 3 meter dem
 Interval(ft): 3
 Min: 355.5
 Max: 408.6
 Range: 53.1
 Average: 370.1
 Standard Deviation: 9.81 ft



11-8S-1E
Williamson County
Illinois

map center: 37° 50' 29.04, -89° 3' 53.33



Maps Provided By:



© AgriData, Inc. 2021 www.AgriDataInc.com

Field borders provided by Farm Service Agency as of 5/21/2008.