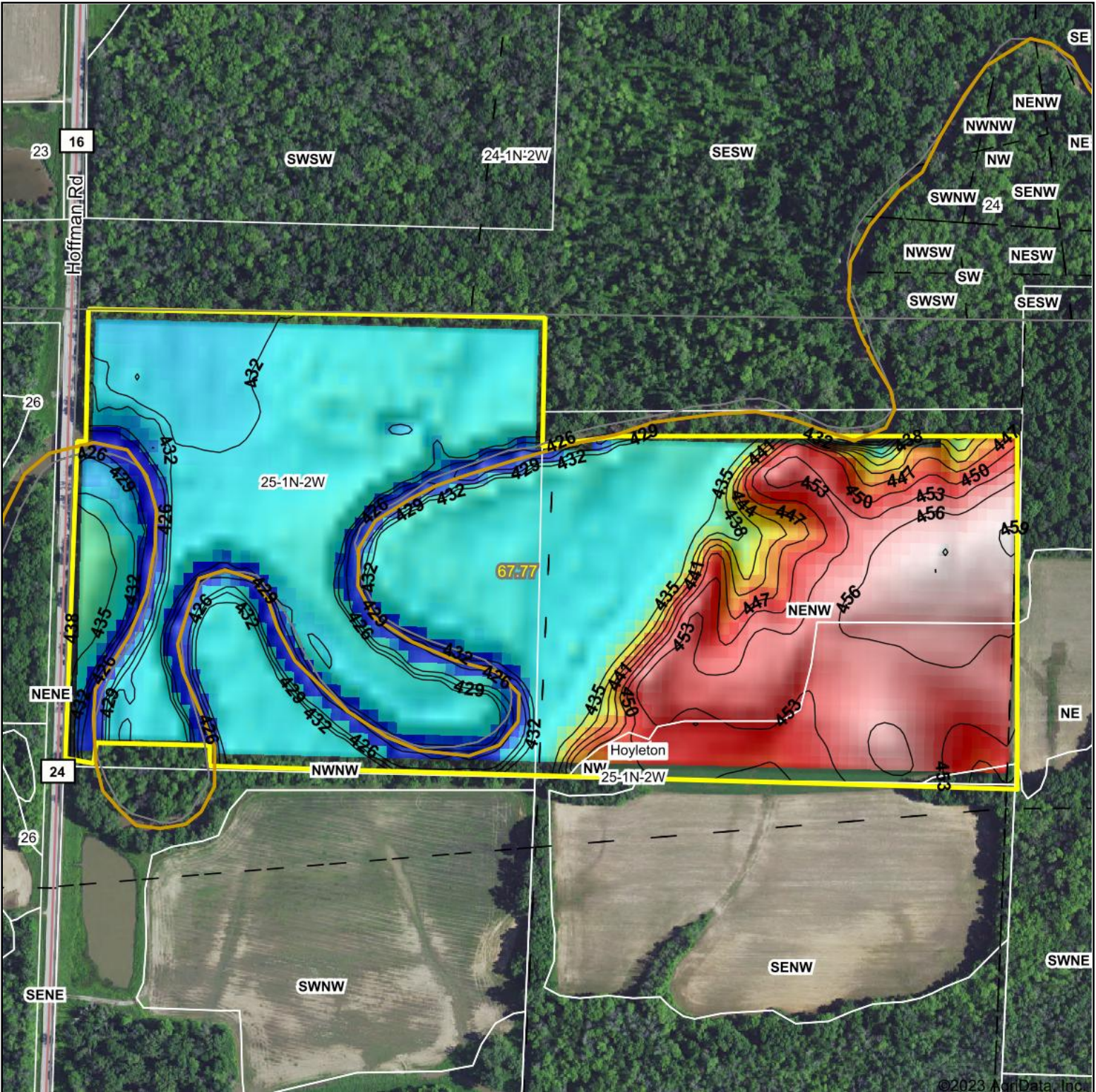


Topography Hillshade



| | | |
|--|---|--|
| <p>Low Elevation High</p> | <p>Source: USGS 10 meter dem Interval(ft): 3 Min: 423.8 Max: 459.6 Range: 35.8 Average: 438.6 Standard Deviation: 10.3 ft</p> | <p>0ft 437ft 875ft</p> |
| <p> Maps Provided By: CUSTOMIZED ONLINE MAPPING © AgriData, Inc. 2023 www.AgriDataInc.com Field borders provided by Farm Service Agency as of 5/21/2008. </p> | <p> Hoyleton 25-1N-2W 67.77 </p> | <p> 11/28/2023 25-1N-2W Washington County Illinois Boundary Center: 38° 30' 23.32, -89° 16' 7.57 </p> |