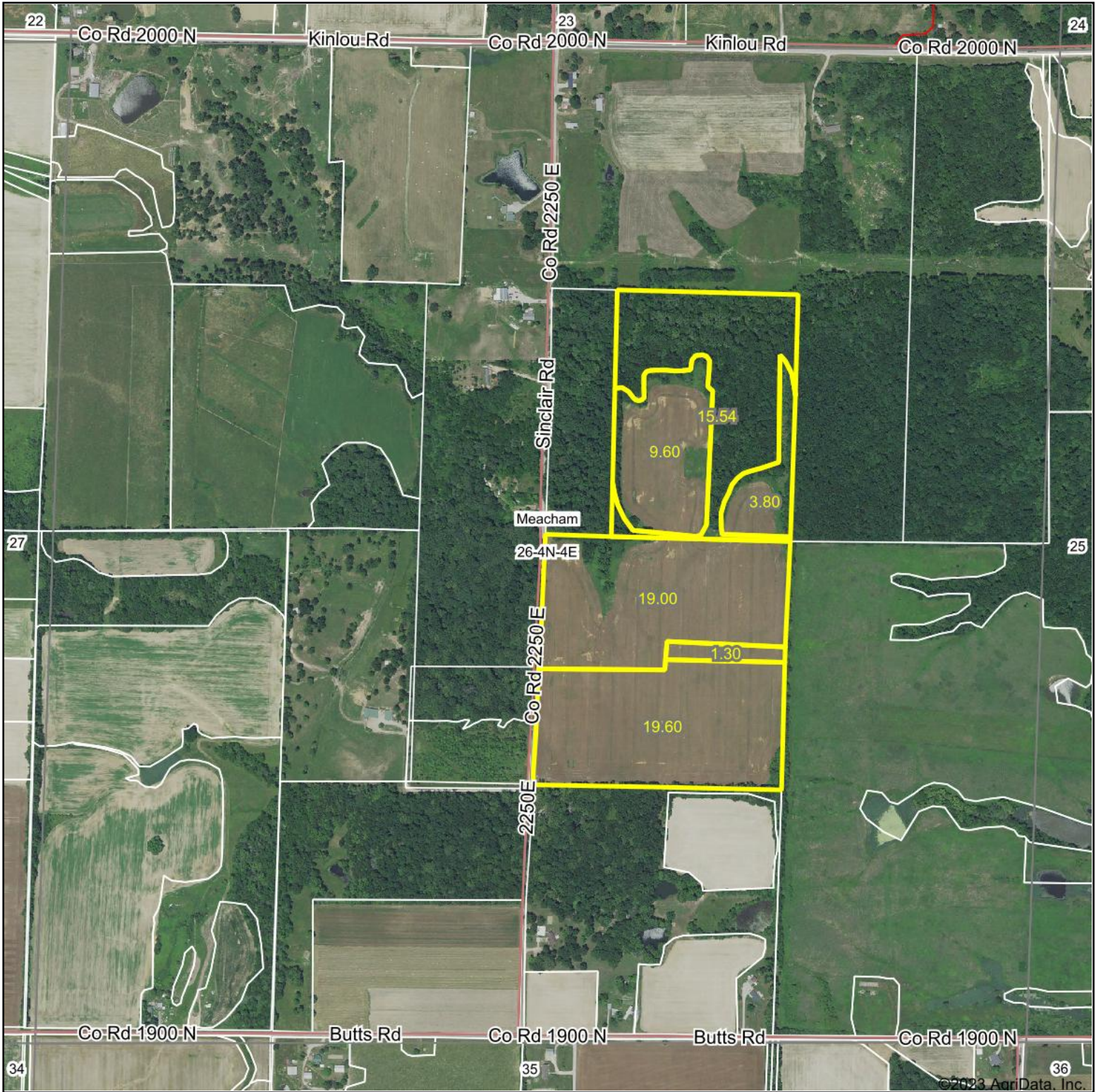
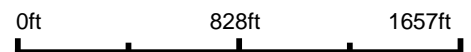


# Aerial Map



©2023 AgriData, Inc.

Boundary Center: 38° 45' 34.12, -88° 43' 19.12



**26-4N-4E**  
**Marion County**  
**Illinois**

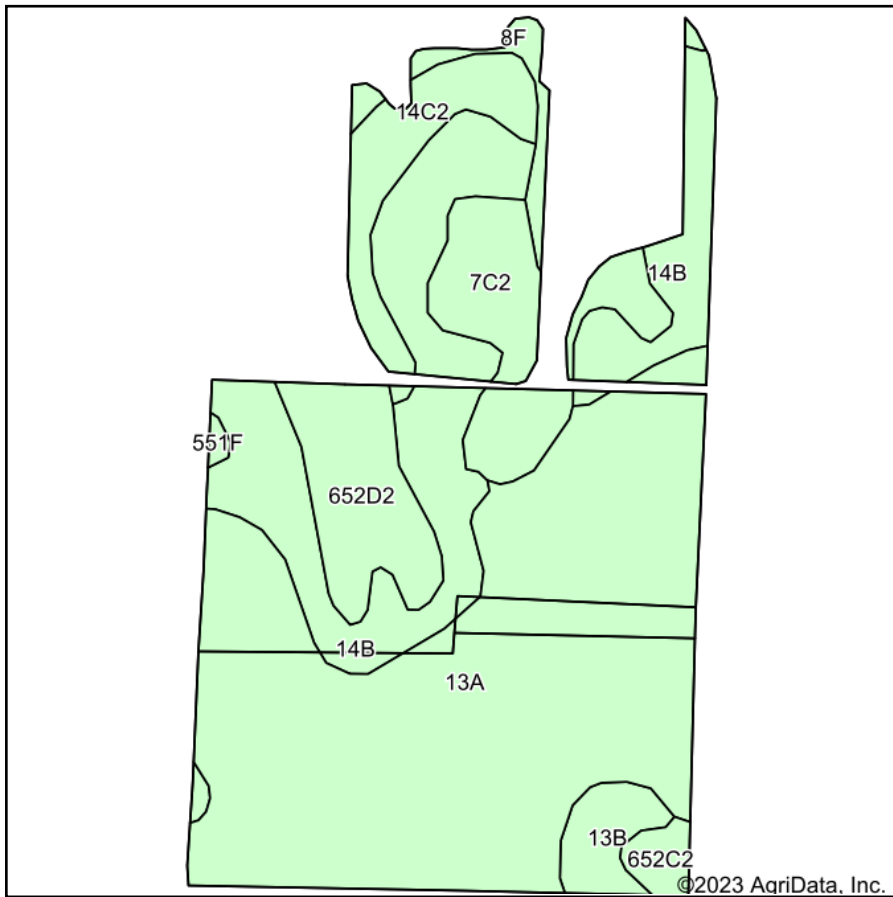


Maps Provided By:  
**surety**  
CUSTOMIZED ONLINE MAPPING  
© AgriData, Inc. 2023 www.AgriDataInc.com

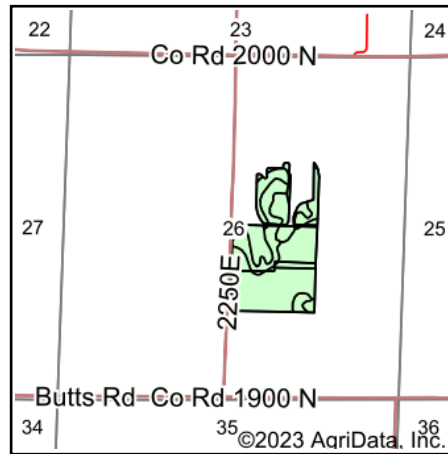
9/8/2023

Field borders provided by Farm Service Agency as of 5/21/2008.

# Soils Map



Soils data provided by USDA and NRCS.



State: **Illinois**  
 County: **Marion**  
 Location: **26-4N-4E**  
 Township: **Meacham**  
 Acres: **53.3**  
 Date: **9/8/2023**



Maps Provided By:  
  
 © AgriData, Inc. 2023 [www.AgriDataInc.com](http://www.AgriDataInc.com)



Area Symbol: IL121, Soil Area Version: 19

Code	Soil Description	Acres	Percent of field	Corn Bu/A	Soybeans Bu/A	Wheat Bu/A	Grass-legume e hay, T/A	Crop productivity index for optimum management
13A	Bluford silt loam, 0 to 2 percent slopes	27.17	51.0%	136	44	55	3.39	101
**14B	Ava silt loam, 2 to 5 percent slopes	11.79	22.1%	**134	**44	**54	0.00	**99
**7C2	Atlas silt loam, 5 to 10 percent slopes, eroded	4.49	8.4%	**105	**37	**41	**3.16	**81
**652D2	Passport silt loam, 10 to 18 percent slopes, eroded	3.72	7.0%	**111	**37	**49	**3.68	**85
**14C2	Ava silt loam, 5 to 10 percent slopes, eroded	2.97	5.6%	**122	**40	**50	0.00	**90
**13B	Bluford silt loam, 2 to 5 percent slopes	1.36	2.6%	**135	**44	**54	**3.36	**100
**8F	Hickory silt loam, 18 to 35 percent slopes	1.02	1.9%	**86	**29	**35	0.00	**65
**652C2	Passport silt loam, 5 to 10 percent slopes, eroded	0.65	1.2%	**116	**39	**51	**3.85	**88
**551F	Gosport silt loam, 18 to 35 percent slopes	0.13	0.2%	**76	**26	**31	**2.39	**58
<b>Weighted Average</b>				<b>129</b>	<b>42.3</b>	<b>52.4</b>	<b>2.39</b>	<b>96.2</b>

**Table: Optimum Crop Productivity Ratings for Illinois Soil by K.R. Olson and J.M. Lang, Office of Research, ACES, University of Illinois at Champaign-Urbana.** Version: 1/2/2012 Amended Table S2 B811

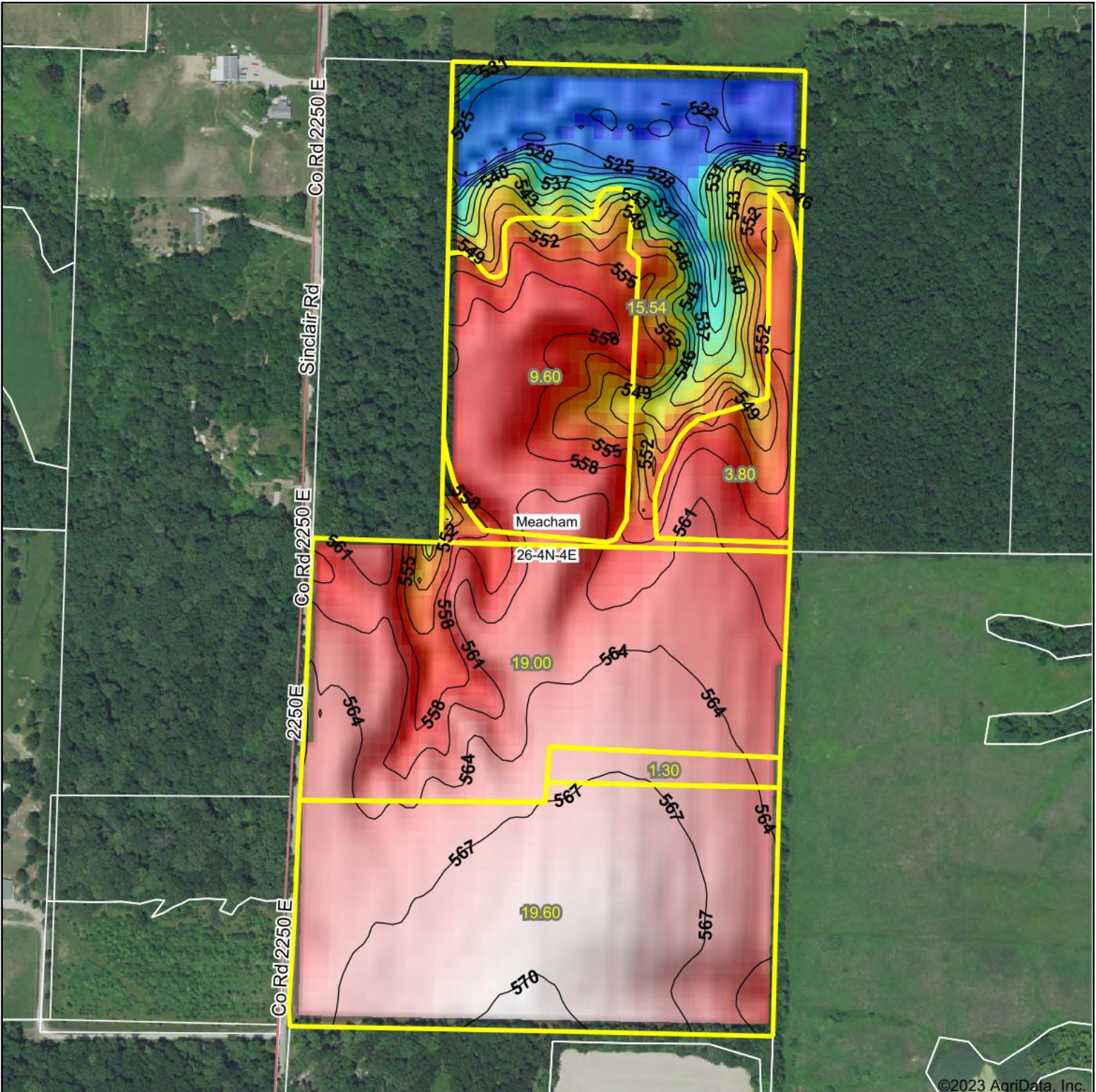
Crop yields and productivity indices for optimum management (B811) are maintained at the following NRES web site: <http://soilproductivity.nres.illinois.edu/>

\*\* Indexes adjusted for slope and erosion according to Bulletin 811 Table S3

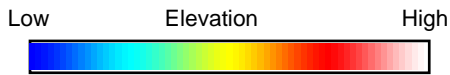
e Soils in the well drained group were not rated for grass-legume and are shown with a zero "0".

Soils data provided by USDA and NRCS. Soils data provided by University of Illinois at Champaign-Urbana.

# Topography Hillshade



©2023 AgriData, Inc.



Source: USGS 10 meter dem  
 Interval(ft): 3  
 Min: 518.5  
 Max: 570.5  
 Range: 52.0  
 Average: 557.0  
 Standard Deviation: 13.06 ft



**26-4N-4E**  
**Marion County**  
**Illinois**

Boundary Center: 38° 45' 34.12, -88° 43' 19.12



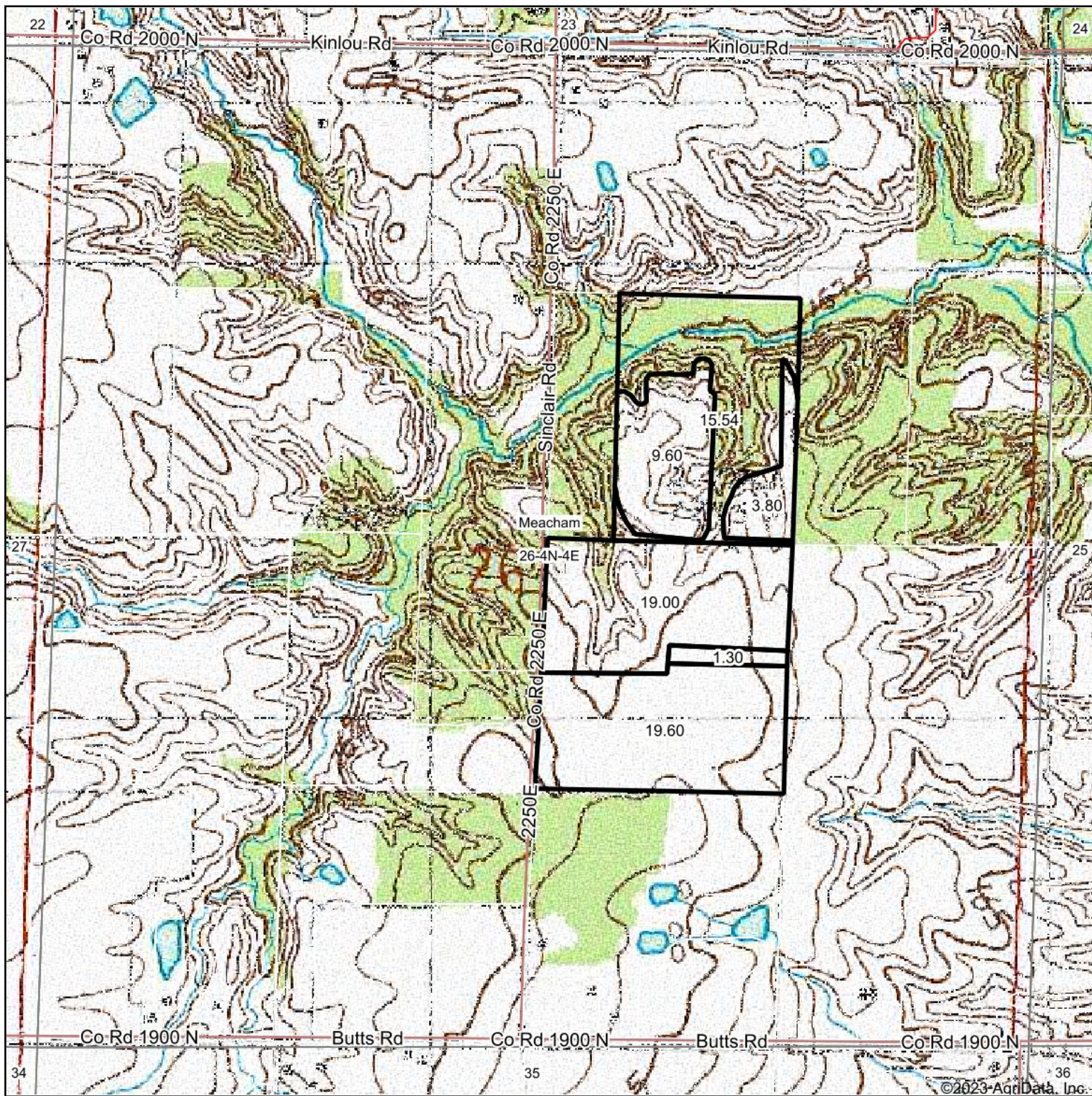
Maps Provided By:



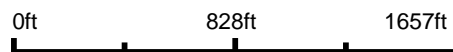
© AgriData, Inc. 2023 www.AgriDataInc.com

Field borders provided by Farm Service Agency as of 5/21/2008.

# Topography Map



Map Center: 38° 45' 33.59, -88° 43' 27.04



**26-4N-4E**  
**Marion County**  
**Illinois**



9/8/2023



Maps Provided By:



© AgriData, Inc. 2023

www.AgridataInc.com