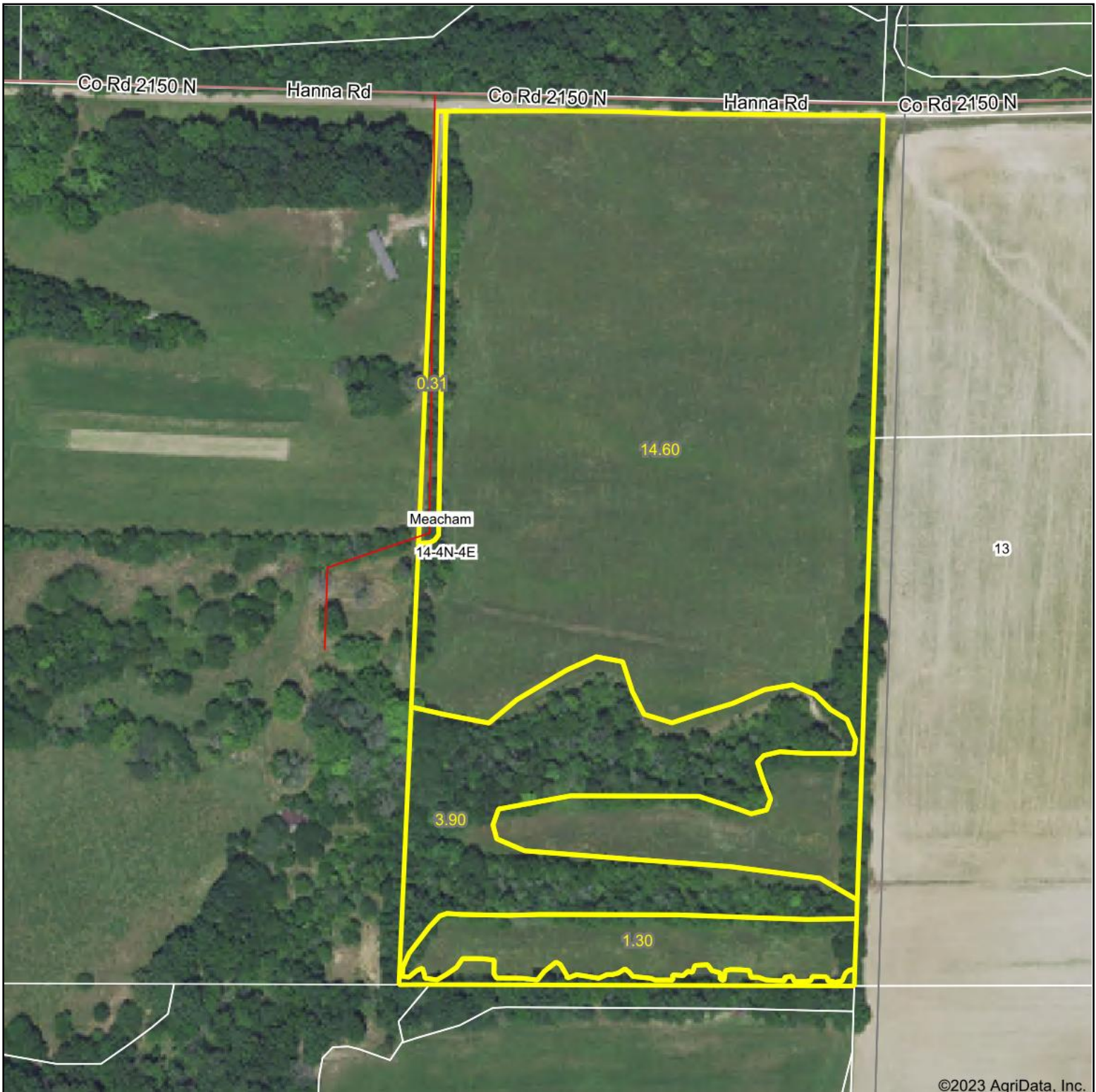


# Aerial Map



Boundary Center: 38° 47' 12.02, -88° 42' 56.83



**14-4N-4E**  
**Marion County**  
**Illinois**



Maps Provided By:

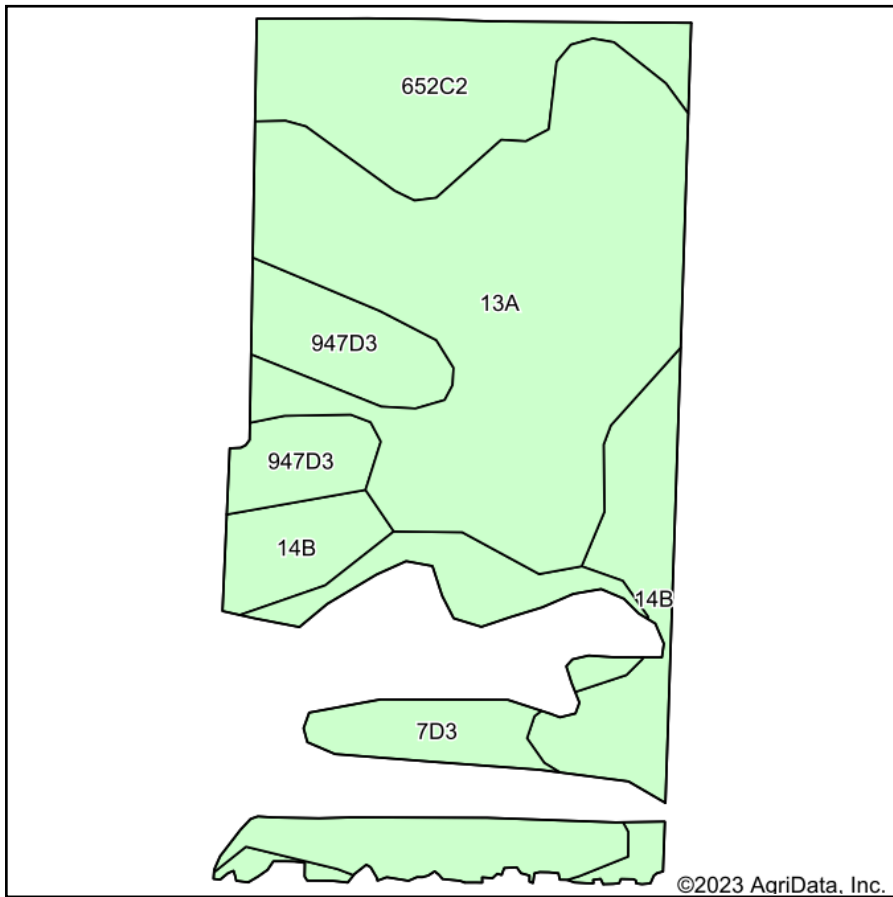


© AgriData, Inc. 2023 www.AgriDataInc.com

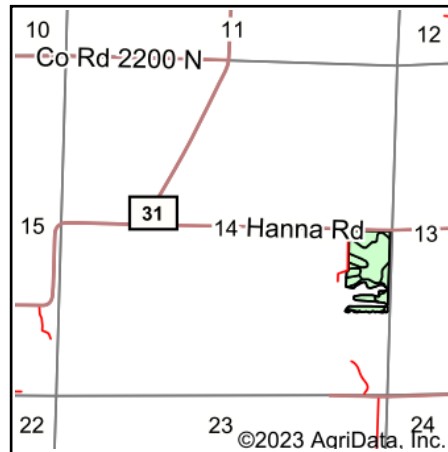
9/9/2023

Field borders provided by Farm Service Agency as of 5/21/2008.

# Soils Map



Soils data provided by USDA and NRCS.



State: **Illinois**  
 County: **Marion**  
 Location: **14-4N-4E**  
 Township: **Meacham**  
 Acres: **15.9**  
 Date: **9/9/2023**



Area Symbol: IL121, Soil Area Version: 19

Code	Soil Description	Acres	Percent of field	Corn Bu/A	Soybeans Bu/A	Wheat Bu/A	Grass-legume e hay, T/A	Crop productivity index for optimum management
13A	Bluford silt loam, 0 to 2 percent slopes	7.00	44.0%	136	44	55	3.39	101
**7D3	Atlas silty clay loam, 10 to 18 percent slopes, severely eroded	2.56	16.1%	**81	**28	**32	**2.42	**62
**14B	Ava silt loam, 2 to 5 percent slopes	2.45	15.4%	**134	**44	**54	0.00	**99
**652C2	Passport silt loam, 5 to 10 percent slopes, eroded	2.38	15.0%	**116	**39	**51	**3.85	**88
**947D3	Hickory-Passport clay loams, 10 to 18 percent slopes, severely eroded	1.51	9.5%	**109	**36	**45	**2.89	**80
<b>Weighted Average</b>				<b>121.3</b>	<b>39.9</b>	<b>49.6</b>	<b>2.73</b>	<b>90.5</b>

**Table: Optimum Crop Productivity Ratings for Illinois Soil by K.R. Olson and J.M. Lang, Office of Research, ACES, University of Illinois at Champaign-Urbana.** Version: 1/2/2012 Amended Table S2 B811

Crop yields and productivity indices for optimum management (B811) are maintained at the following NRES web site: <http://soilproductivity.nres.illinois.edu/>

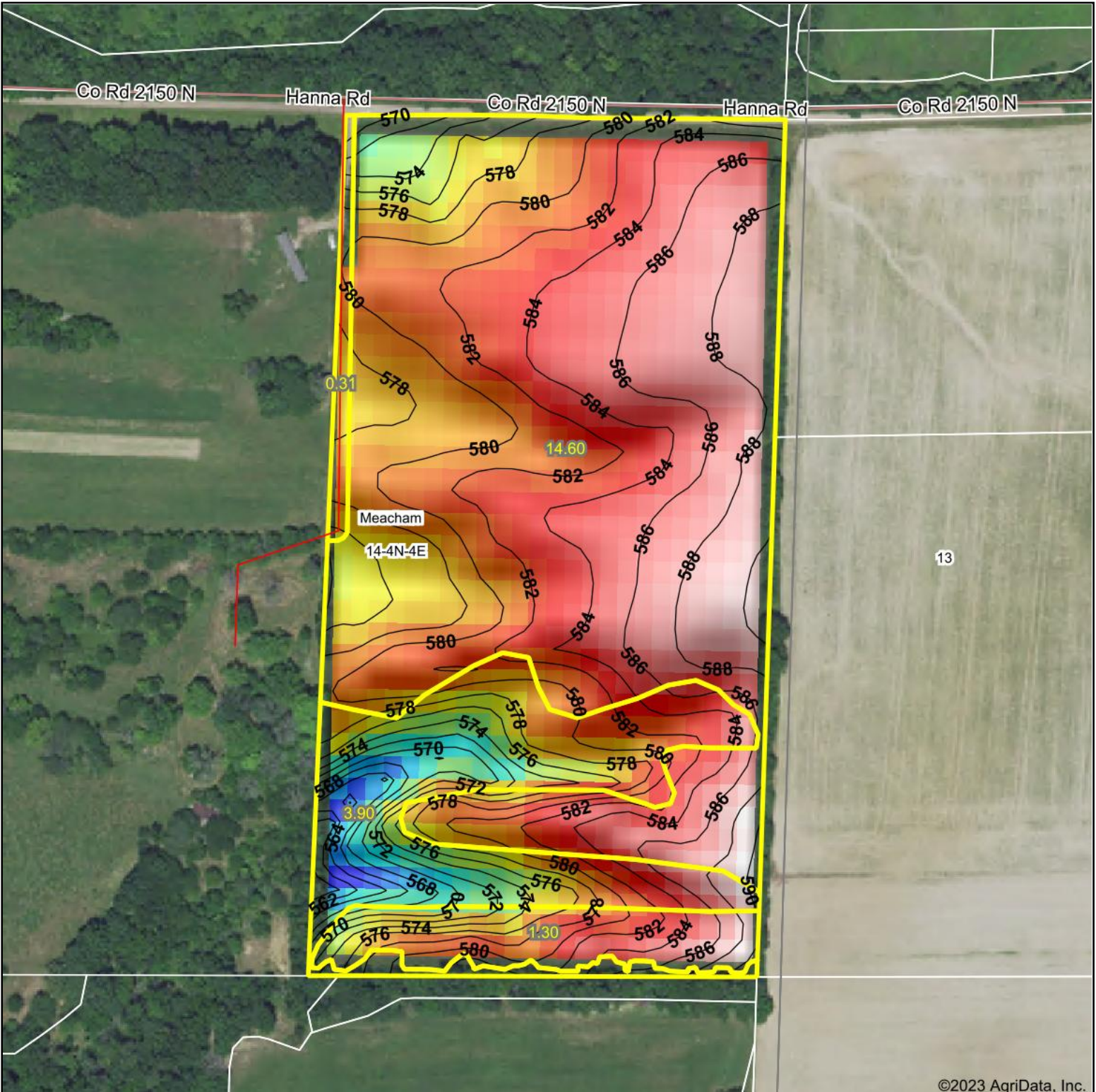
\*\* Indexes adjusted for slope and erosion according to Bulletin 811 Table S3

e Soils in the well drained group were not rated for grass-legume and are shown with a zero "0".

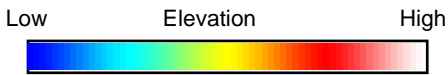
Soils data provided by USDA and NRCS. Soils data provided by University of Illinois at Champaign-Urbana.



# Topography Hillshade



©2023 AgriData, Inc.



Source: USGS 10 meter dem  
 Interval(ft): 2  
 Min: 559.7  
 Max: 591.6  
 Range: 31.9  
 Average: 581.5  
 Standard Deviation: 5.68 ft



**14-4N-4E**  
**Marion County**  
**Illinois**

Boundary Center: 38° 47' 12.02, -88° 42' 56.83



Maps Provided By:



© AgriData, Inc. 2023 www.AgriDataInc.com

Field borders provided by Farm Service Agency as of 5/21/2008.