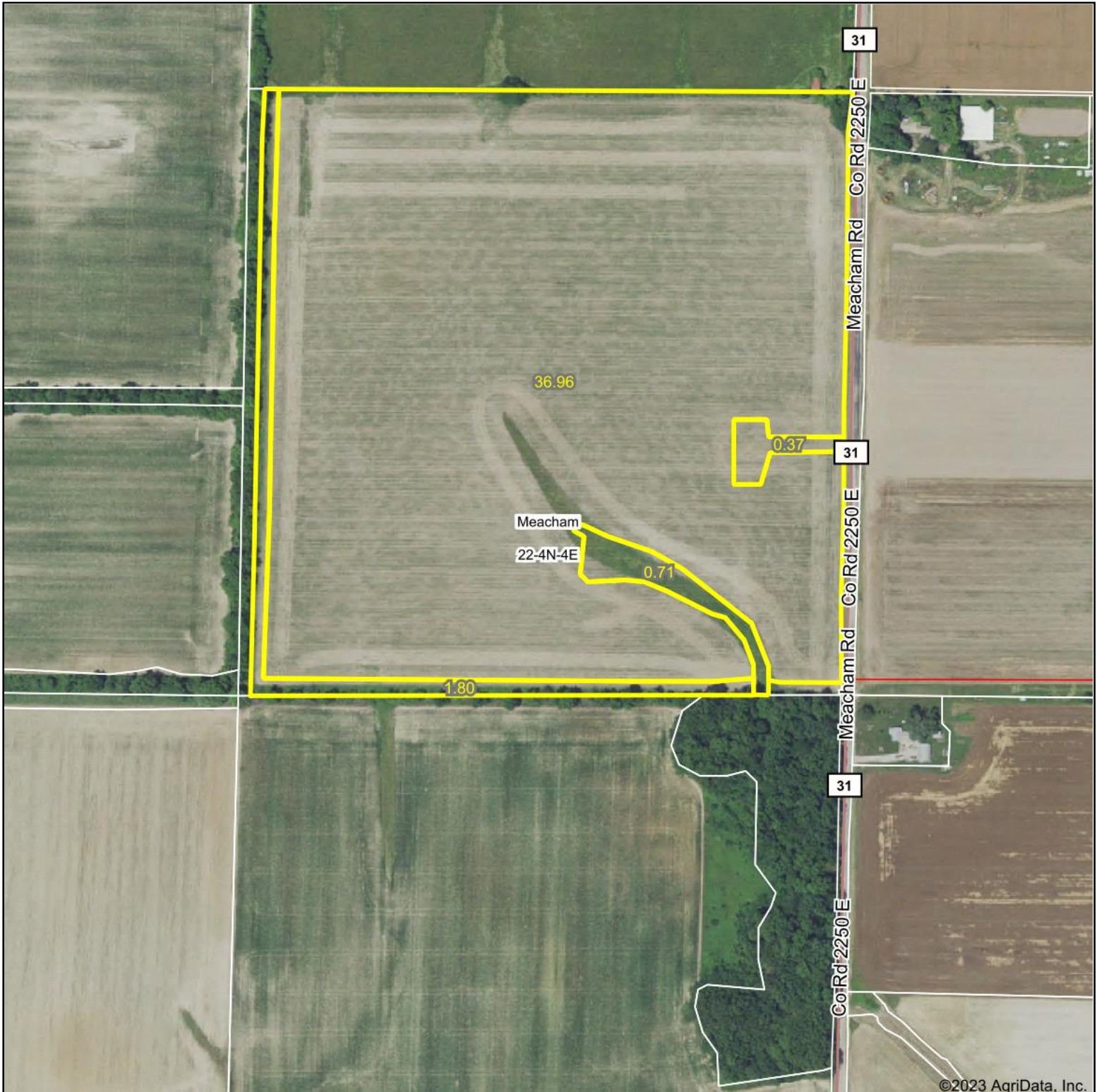


# Aerial Map



Boundary Center: 38° 46' 32.67, -88° 44' 25.38



**22-4N-4E**  
**Marion County**  
**Illinois**



Maps Provided By:

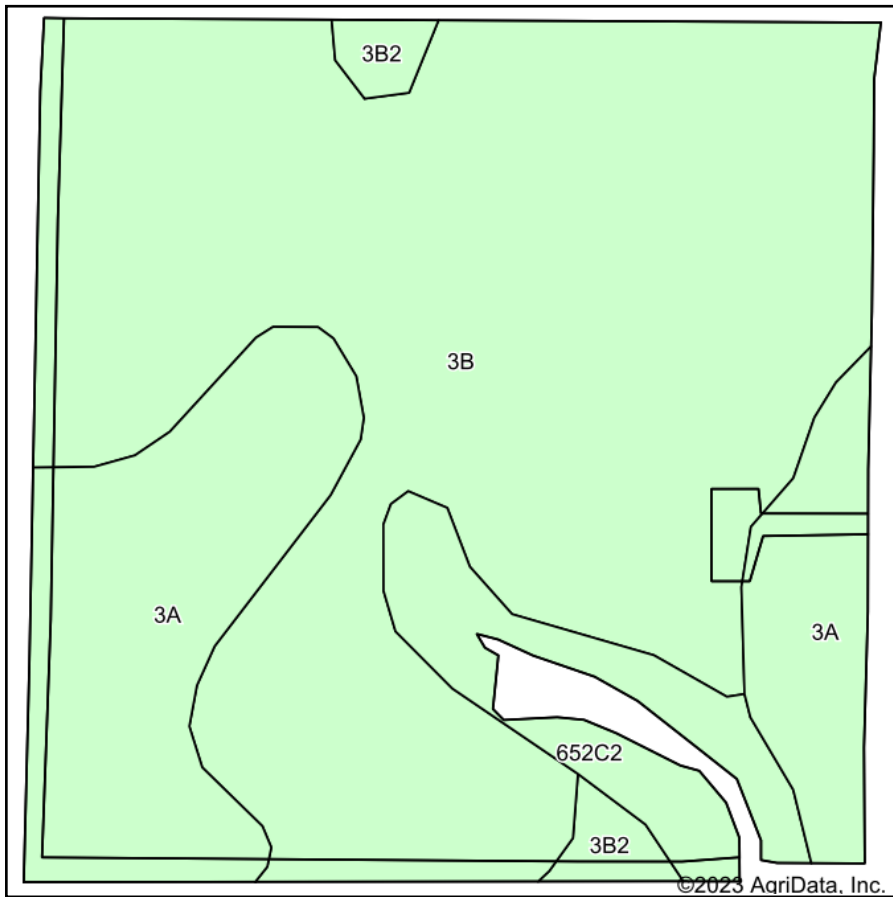


© AgriData, Inc. 2023 www.AgriDataInc.com

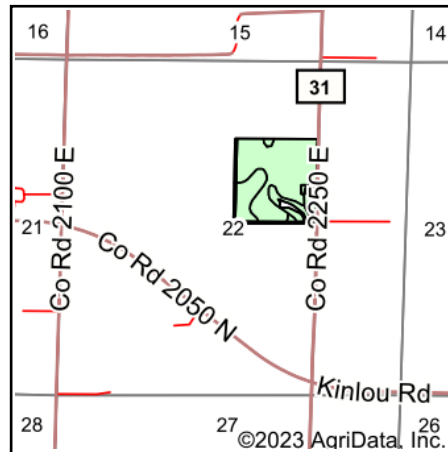
9/8/2023

Field borders provided by Farm Service Agency as of 5/21/2008.

# Soils Map



Soils data provided by USDA and NRCS.



State: **Illinois**  
 County: **Marion**  
 Location: **22-4N-4E**  
 Township: **Meacham**  
 Acres: **39.13**  
 Date: **9/8/2023**



Maps Provided By:



Area Symbol: IL121, Soil Area Version: 19

Code	Soil Description	Acres	Percent of field	Corn Bu/A	Soybeans Bu/A	Wheat Bu/A	Grass-legume e hay, T/A	Crop productivity index for optimum management
**3B	Hoyleton silt loam, 2 to 5 percent slopes	26.80	68.5%	**145	**46	**57	**4.59	**107
3A	Hoyleton silt loam, 0 to 2 percent slopes	8.78	22.4%	146	46	58	4.64	108
**652C2	Passport silt loam, 5 to 10 percent slopes, eroded	2.77	7.1%	**116	**39	**51	**3.85	**88
**3B2	Hoyleton silt loam, 2 to 5 percent slopes, eroded	0.78	2.0%	**139	**44	**55	**4.41	**103
<b>Weighted Average</b>				<b>143.1</b>	<b>45.5</b>	<b>56.8</b>	<b>4.55</b>	<b>105.8</b>

**Table: Optimum Crop Productivity Ratings for Illinois Soil by K.R. Olson and J.M. Lang, Office of Research, ACES, University of Illinois at Champaign-Urbana.** Version: 1/2/2012 Amended Table S2 B811

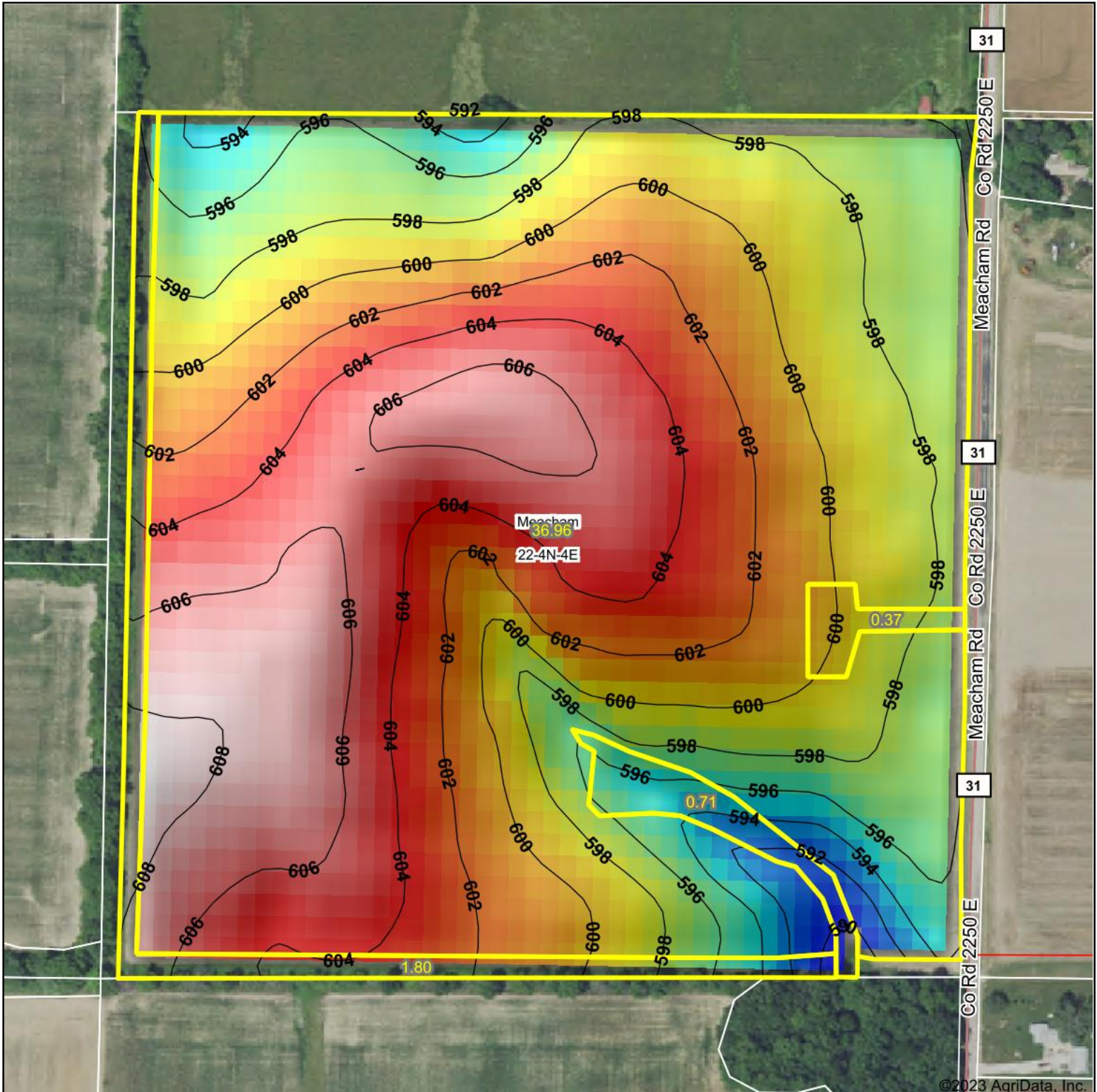
Crop yields and productivity indices for optimum management (B811) are maintained at the following NRES web site: <http://soilproductivity.nres.illinois.edu/>

\*\* Indexes adjusted for slope and erosion according to Bulletin 811 Table S3

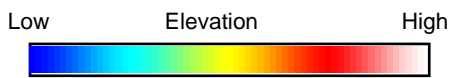
e Soils in the well drained group were not rated for grass-legume and are shown with a zero "0".

Soils data provided by USDA and NRCS. Soils data provided by University of Illinois at Champaign-Urbana.

# Topography Hillshade



©2023 AgriData, Inc.



Source: USGS 10 meter dem  
 Interval(ft): 2  
 Min: 589.1  
 Max: 608.7  
 Range: 19.6  
 Average: 601.0  
 Standard Deviation: 4 ft



**22-4N-4E**  
**Marion County**  
**Illinois**

Boundary Center: 38° 46' 32.67, -88° 44' 25.38



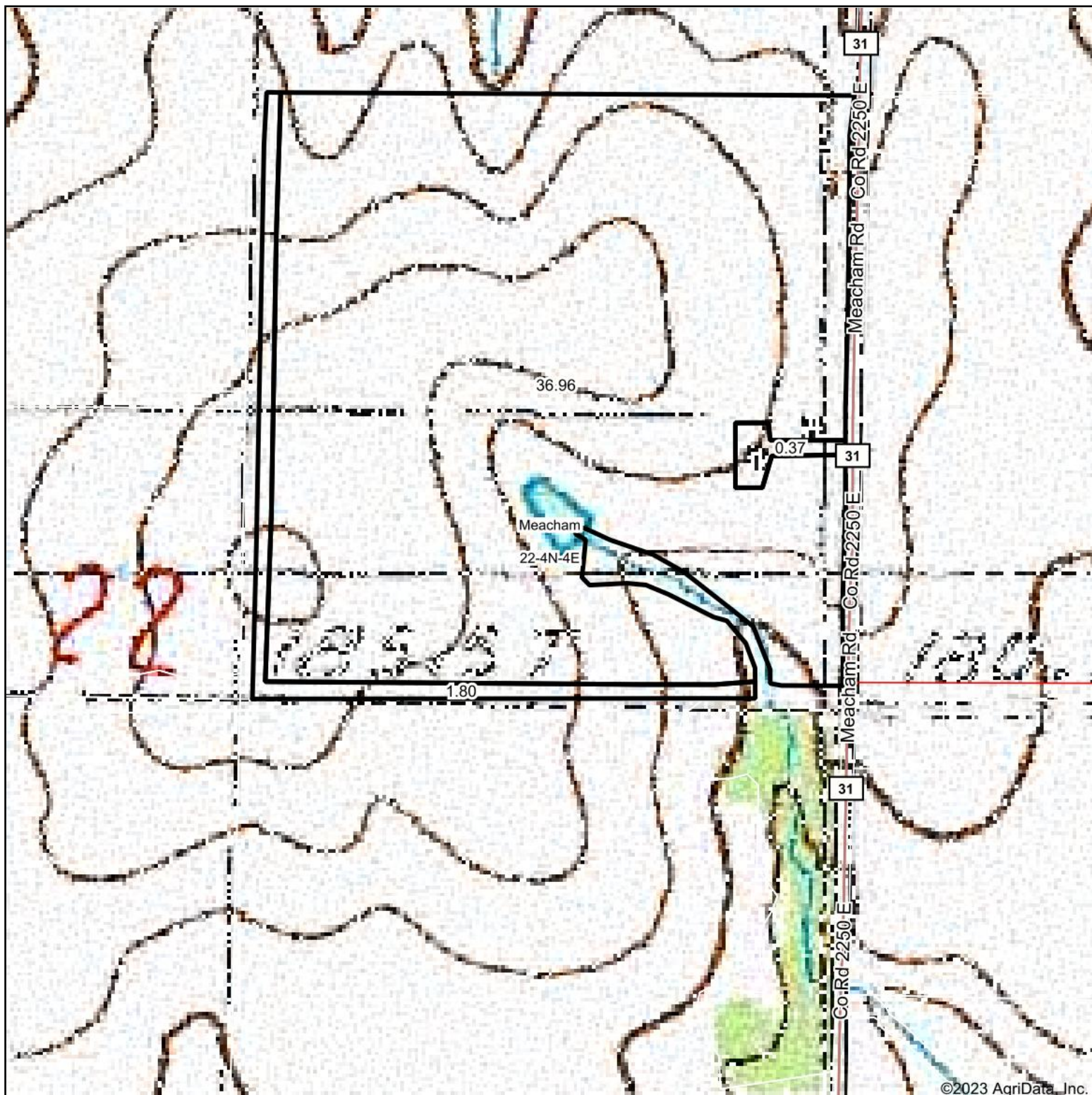
Maps Provided By:



© AgriData, Inc. 2023 www.AgriDataInc.com

Field borders provided by Farm Service Agency as of 5/21/2008.

# Topography Map



©2023 AgriData, Inc.

Map Center: 38° 46' 29.31, -88° 44' 25.4



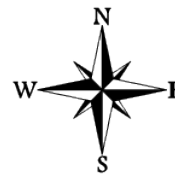
Maps Provided By:



© AgriData, Inc. 2023

www.AgridataInc.com

**22-4N-4E**  
**Marion County**  
**Illinois**



9/8/2023

Field borders provided by Farm Service Agency as of 5/21/2008.