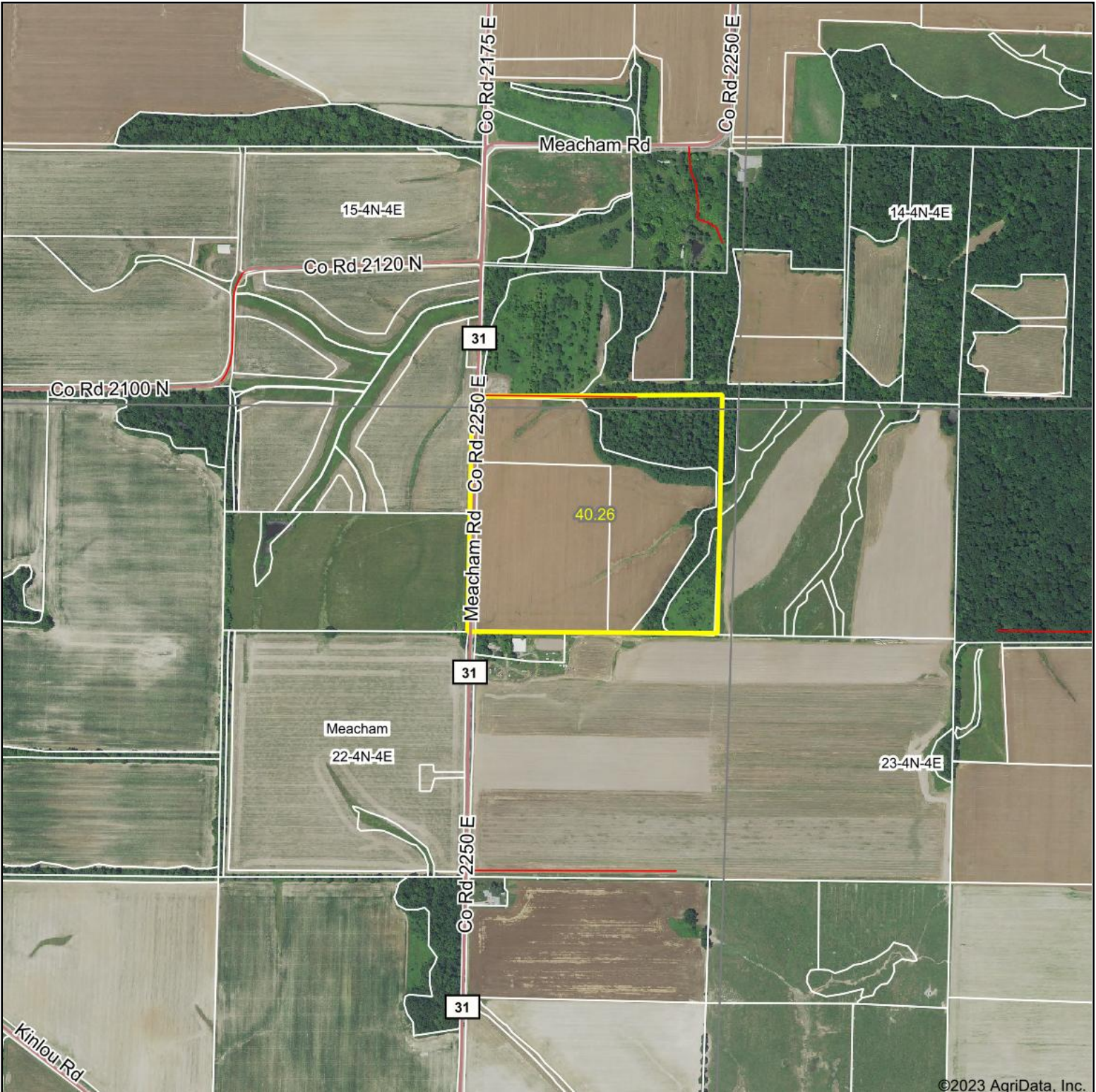
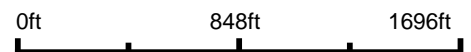


Aerial Map



©2023 AgriData, Inc.

Boundary Center: 38° 46' 45.9, -88° 44' 8.58



22-4N-4E
Marion County
Illinois

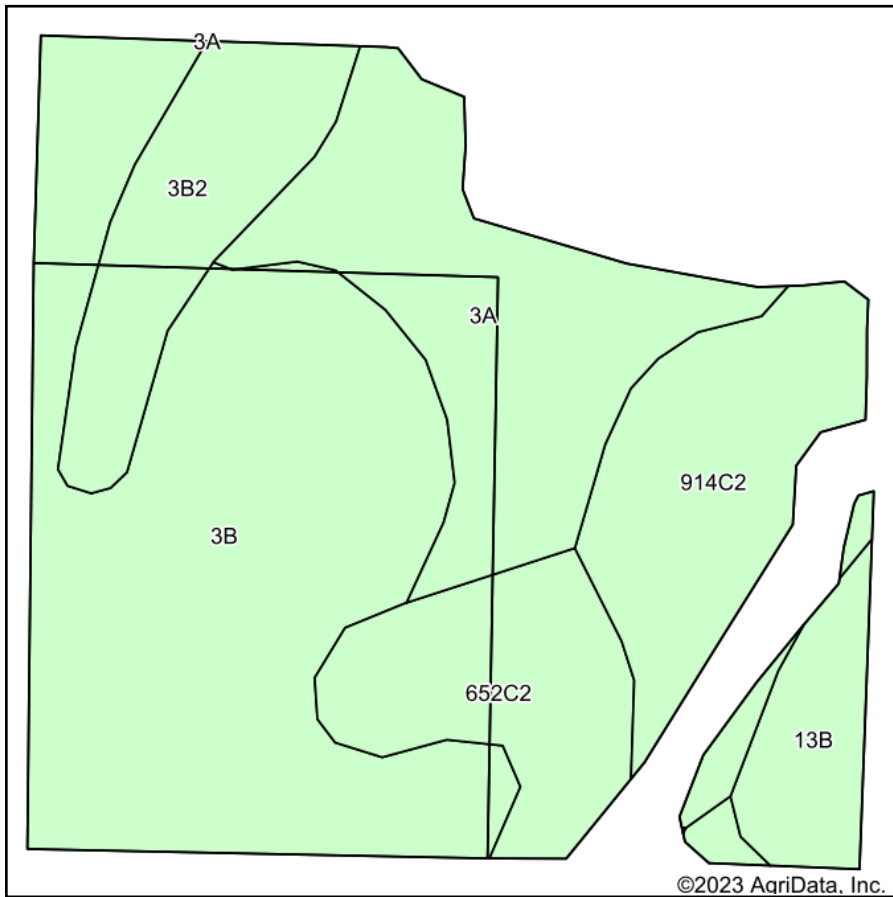


Maps Provided By:
surety
CUSTOMIZED ONLINE MAPPING
© AgriData, Inc. 2023 www.AgriDataInc.com

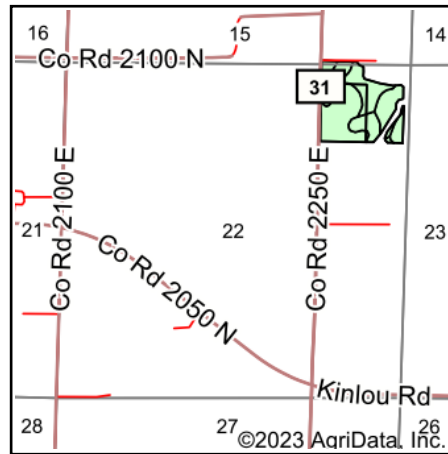
9/9/2023

Field borders provided by Farm Service Agency as of 5/21/2008.

Soils Map



Soils data provided by USDA and NRCS.



State: **Illinois**
 County: **Marion**
 Location: **22-4N-4E**
 Township: **Meacham**
 Acres: **31.25**
 Date: **9/9/2023**



Maps Provided By:



© AgriData, Inc. 2023

www.AgriDataInc.com



Area Symbol: IL121, Soil Area Version: 19

| Code | Soil Description | Acres | Percent of field | Corn Bu/A | Soybeans Bu/A | Wheat Bu/A | Grass-legume e hay, T/A | Crop productivity index for optimum management |
|-------------------------|--|-------|------------------|--------------|---------------|-------------|-------------------------|--|
| **3B | Hoyleton silt loam, 2 to 5 percent slopes | 13.20 | 42.2% | **145 | **46 | **57 | **4.59 | **107 |
| 3A | Hoyleton silt loam, 0 to 2 percent slopes | 5.82 | 18.6% | 146 | 46 | 58 | 4.64 | 108 |
| **914C2 | Atlas-Grantfork silt loams, 5 to 10 percent slopes, eroded | 4.35 | 13.9% | **104 | **37 | **40 | **3.07 | **81 |
| **652C2 | Passport silt loam, 5 to 10 percent slopes, eroded | 3.29 | 10.5% | **116 | **39 | **51 | **3.85 | **88 |
| **3B2 | Hoyleton silt loam, 2 to 5 percent slopes, eroded | 3.00 | 9.6% | **139 | **44 | **55 | **4.41 | **103 |
| **13B | Bluford silt loam, 2 to 5 percent slopes | 1.59 | 5.1% | **135 | **44 | **54 | **3.36 | **100 |
| Weighted Average | | | | 135.3 | 43.7 | 53.8 | 4.23 | 100.8 |

Table: Optimum Crop Productivity Ratings for Illinois Soil by K.R. Olson and J.M. Lang, Office of Research, ACES, University of Illinois at Champaign-Urbana. Version: 1/2/2012 Amended Table S2 B811

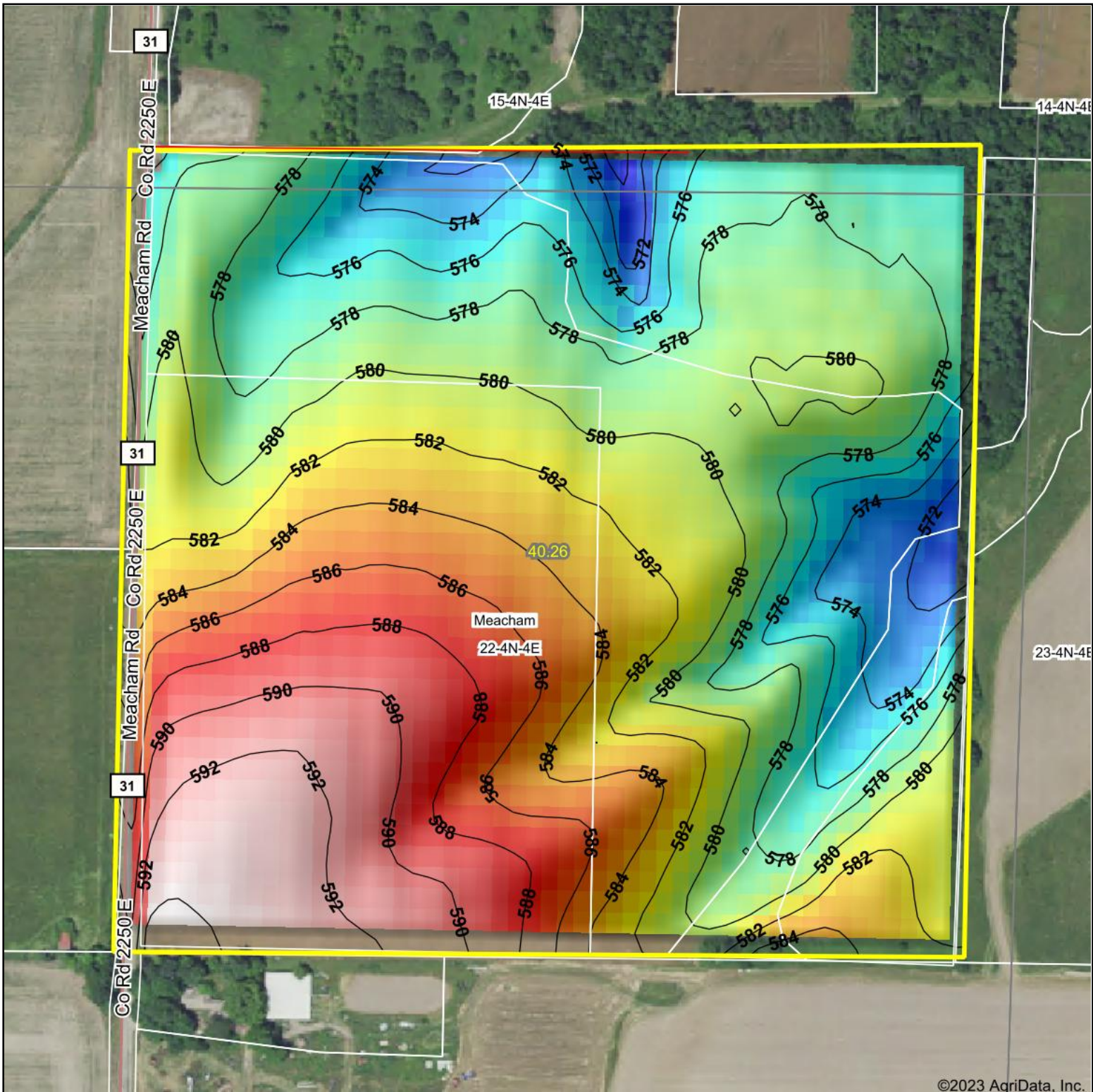
Crop yields and productivity indices for optimum management (B811) are maintained at the following NRES web site: <http://soilproductivity.nres.illinois.edu/>

** Indexes adjusted for slope and erosion according to Bulletin 811 Table S3

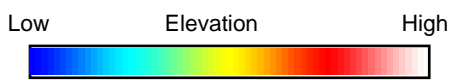
e Soils in the well drained group were not rated for grass-legume and are shown with a zero "0".

Soils data provided by USDA and NRCS. Soils data provided by University of Illinois at Champaign-Urbana.

Topography Hillshade



©2023 AgriData, Inc.



Source: USGS 10 meter dem



Interval(ft): 2

Min: 569.5

Max: 594.4

Range: 24.9

Average: 581.6

Standard Deviation: 5.38 ft



9/9/2023

22-4N-4E
Marion County
Illinois

Boundary Center: 38° 46' 45.9, -88° 44' 8.58



Maps Provided By:



© AgriData, Inc. 2023 www.AgriDataInc.com

Field borders provided by Farm Service Agency as of 5/21/2008.