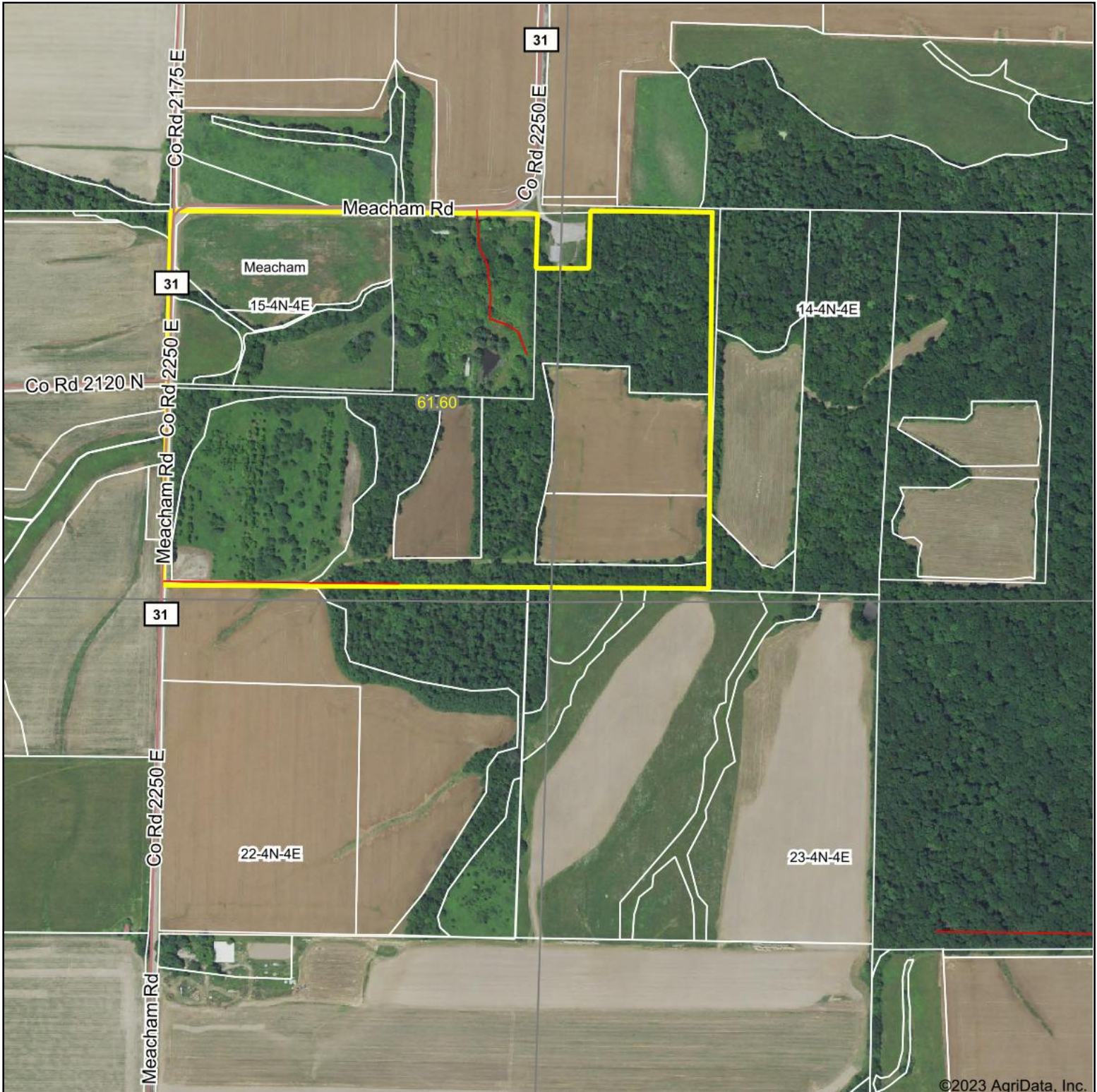
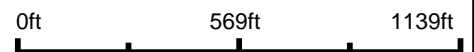


# Aerial Map



©2023 AgriData, Inc.

Boundary Center: 38° 46' 58.91, -88° 44' 4.17



**15-4N-4E**  
**Marion County**  
**Illinois**



Maps Provided By:

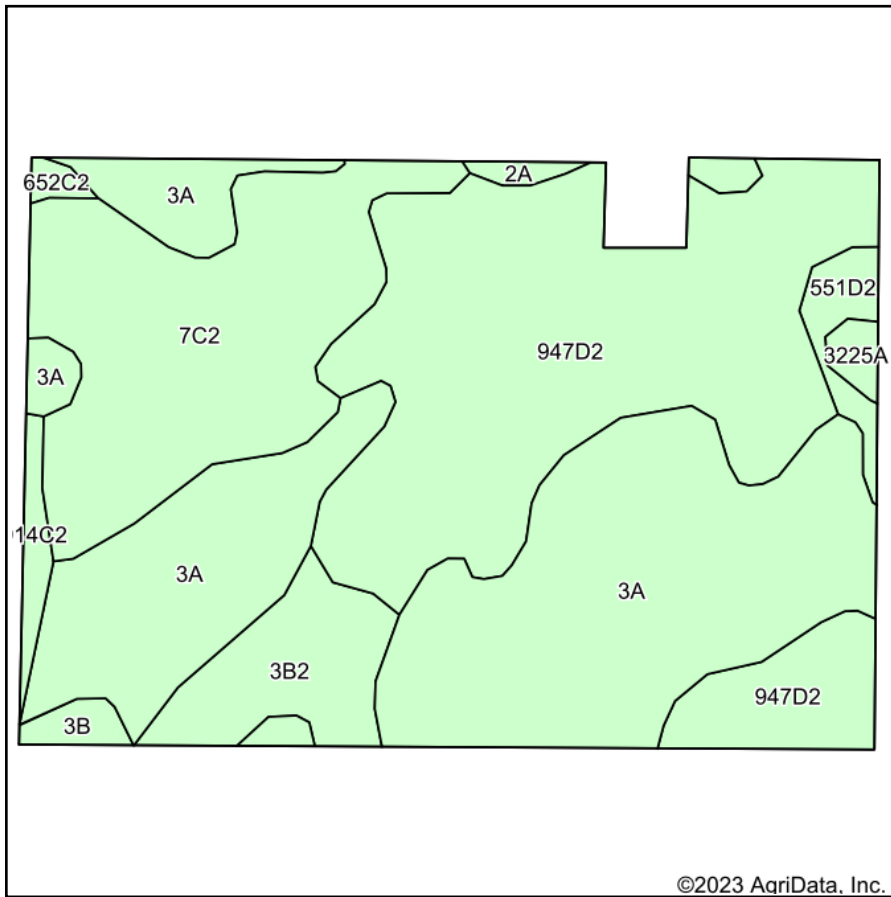


© AgriData, Inc. 2023 www.AgriDataInc.com

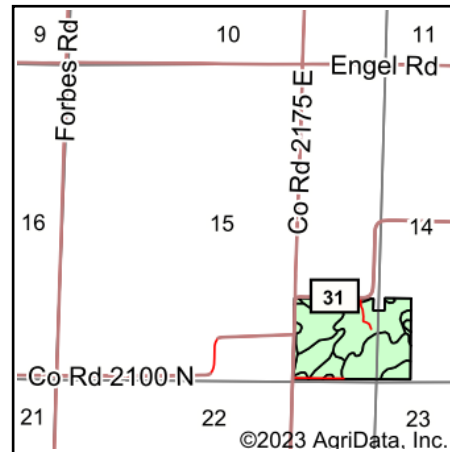
9/9/2023

Field borders provided by Farm Service Agency as of 5/21/2008.

# Soils Map



Soils data provided by USDA and NRCS.



State: **Illinois**  
 County: **Marion**  
 Location: **15-4N-4E**  
 Township: **Meacham**  
 Acres: **61.6**  
 Date: **9/9/2023**



Maps Provided By:



© AgriData, Inc. 2023

www.AgriDataInc.com



Area Symbol: IL121, Soil Area Version: 19

Code	Soil Description	Acres	Percent of field	Corn Bu/A	Soybeans Bu/A	Wheat Bu/A	Grass-legume e hay, T/A	Crop productivity index for optimum management
3A	Hoyleton silt loam, 0 to 2 percent slopes	22.59	36.7%	146	46	58	4.64	108
**947D2	Hickory-Passport silt loams, 10 to 18 percent slopes, eroded	20.81	33.8%	**119	**39	**50	**3.18	**88
**7C2	Atlas silt loam, 5 to 10 percent slopes, eroded	11.41	18.5%	**105	**37	**41	**3.16	**81
**3B2	Hoyleton silt loam, 2 to 5 percent slopes, eroded	3.40	5.5%	**139	**44	**55	**4.41	**103
**551D2	Gosport silt loam, 10 to 18 percent slopes, eroded	1.04	1.7%	**94	**32	**39	**2.95	**71
**914C2	Atlas-Grantfork silt loams, 5 to 10 percent slopes, eroded	0.70	1.1%	**104	**37	**40	**3.07	**81
2A	Cisne silt loam, 0 to 2 percent slopes	0.52	0.8%	149	46	59	4.64	109
**3B	Hoyleton silt loam, 2 to 5 percent slopes	0.49	0.8%	**145	**46	**57	**4.59	**107
3225A	Holton silt loam, 0 to 2 percent slopes, frequently flooded	0.40	0.6%	135	43	50	4.26	100
**652C2	Passport silt loam, 5 to 10 percent slopes, eroded	0.24	0.4%	**116	**39	**51	**3.85	**88
<b>Weighted Average</b>				<b>127.4</b>	<b>41.5</b>	<b>51.4</b>	<b>3.81</b>	<b>94.9</b>

**Table: Optimum Crop Productivity Ratings for Illinois Soil by K.R. Olson and J.M. Lang, Office of Research, ACES, University of Illinois at Champaign-Urbana.** Version: 1/2/2012 Amended Table S2 B811

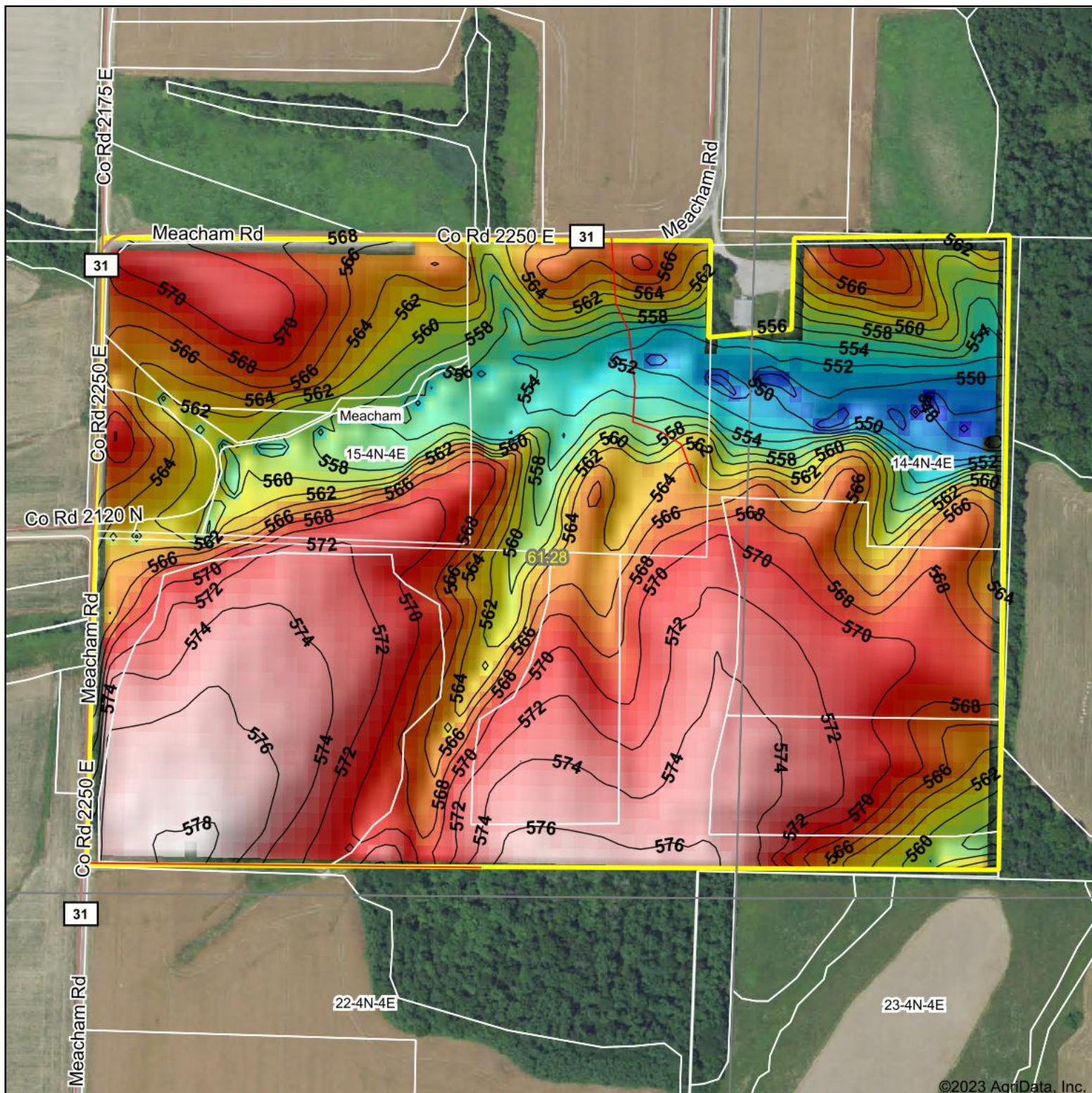
Crop yields and productivity indices for optimum management (B811) are maintained at the following NRES web site: <http://soilproductivity.nres.illinois.edu/>

\*\* Indexes adjusted for slope and erosion according to Bulletin 811 Table S3

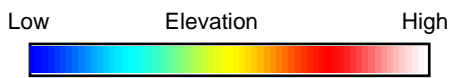
e Soils in the well drained group were not rated for grass-legume and are shown with a zero "0".

Soils data provided by USDA and NRCS. Soils data provided by University of Illinois at Champaign-Urbana.

# Topography Hillshade



©2023 AgriData, Inc.



Source: USGS 10 meter dem  
 Interval(ft): 2  
 Min: 543.9  
 Max: 578.6  
 Range: 34.7  
 Average: 566.3  
 Standard Deviation: 7.35 ft



15-4N-4E  
 Marion County  
 Illinois

Boundary Center: 38° 46' 59.06, -88° 44' 4.17



© AgriData, Inc. 2023 www.AgriDataInc.com  
 Field borders provided by Farm Service Agency as of 5/21/2008.