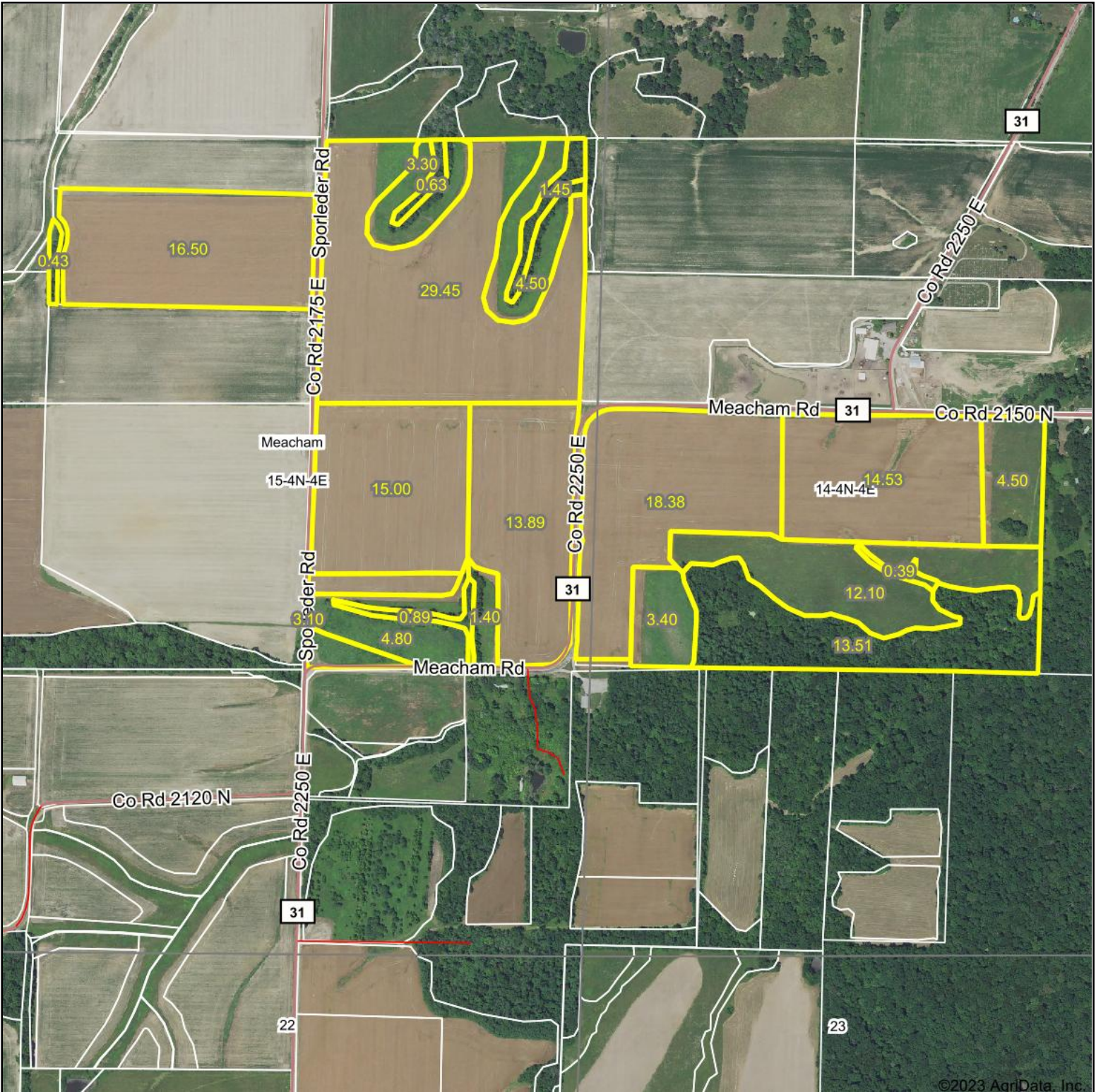


Aerial Map



©2023 AgriData, Inc.

Boundary Center: 38° 47' 18.79, -88° 44' 1.79



15-4N-4E
Marion County
Illinois



Maps Provided By:

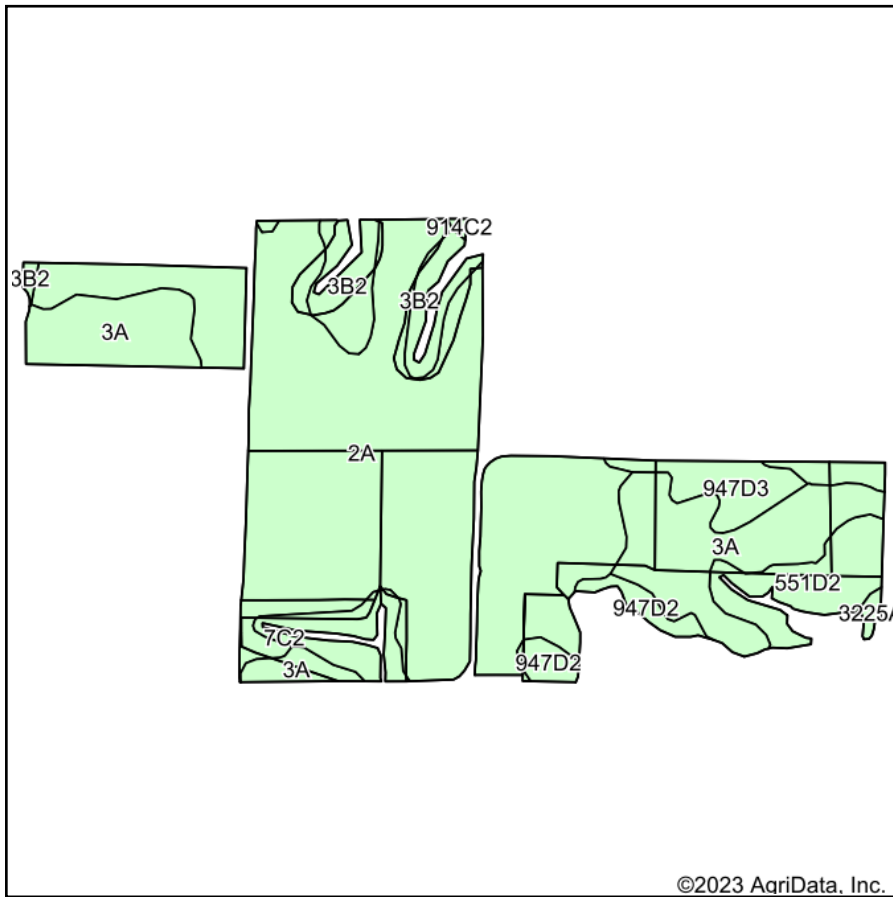


© AgriData, Inc. 2023 www.AgriDataInc.com

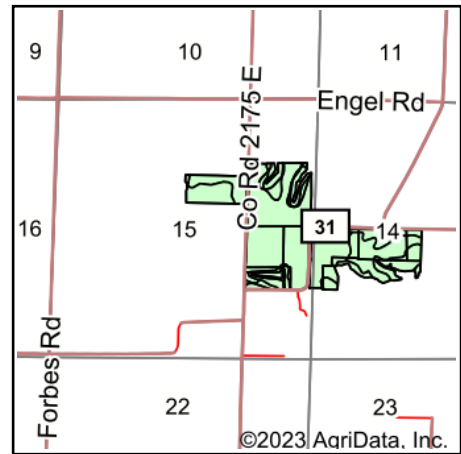
9/9/2023

Field borders provided by Farm Service Agency as of 5/21/2008.

Soils Map



Soils data provided by USDA and NRCS.



State: **Illinois**
 County: **Marion**
 Location: **15-4N-4E**
 Township: **Meacham**
 Acres: **144.85**
 Date: **9/9/2023**



Maps Provided By:



Area Symbol: IL121, Soil Area Version: 19

Code	Soil Description	Acres	Percent of field	Corn Bu/A	Soybeans Bu/A	Wheat Bu/A	Grass-legume e hay, T/A	Crop productivity index for optimum management
2A	Cisne silt loam, 0 to 2 percent slopes	86.89	60.0%	149	46	59	4.64	109
3A	Hoyleton silt loam, 0 to 2 percent slopes	26.42	18.2%	146	46	58	4.64	108
**551D2	Gosport silt loam, 10 to 18 percent slopes, eroded	9.80	6.8%	**94	**32	**39	**2.95	**71
**3B2	Hoyleton silt loam, 2 to 5 percent slopes, eroded	7.99	5.5%	**139	**44	**55	**4.41	**103
**947D3	Hickory-Passport clay loams, 10 to 18 percent slopes, severely eroded	5.01	3.5%	**109	**36	**45	**2.89	**80
**7C2	Atlas silt loam, 5 to 10 percent slopes, eroded	4.75	3.3%	**105	**37	**41	**3.16	**81
**947D2	Hickory-Passport silt loams, 10 to 18 percent slopes, eroded	3.29	2.3%	**119	**39	**50	**3.18	**88
3225A	Holton silt loam, 0 to 2 percent slopes, frequently flooded	0.52	0.4%	135	43	50	4.26	100
**914C2	Atlas-Grantfork silt loams, 5 to 10 percent slopes, eroded	0.18	0.1%	**104	**37	**40	**3.07	**81
Weighted Average				140.6	44.1	55.9	4.37	103.5

Table: Optimum Crop Productivity Ratings for Illinois Soil by K.R. Olson and J.M. Lang, Office of Research, ACES, University of Illinois at Champaign-Urbana. Version: 1/2/2012 Amended Table S2 B811

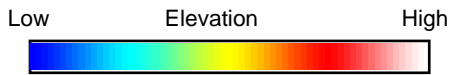
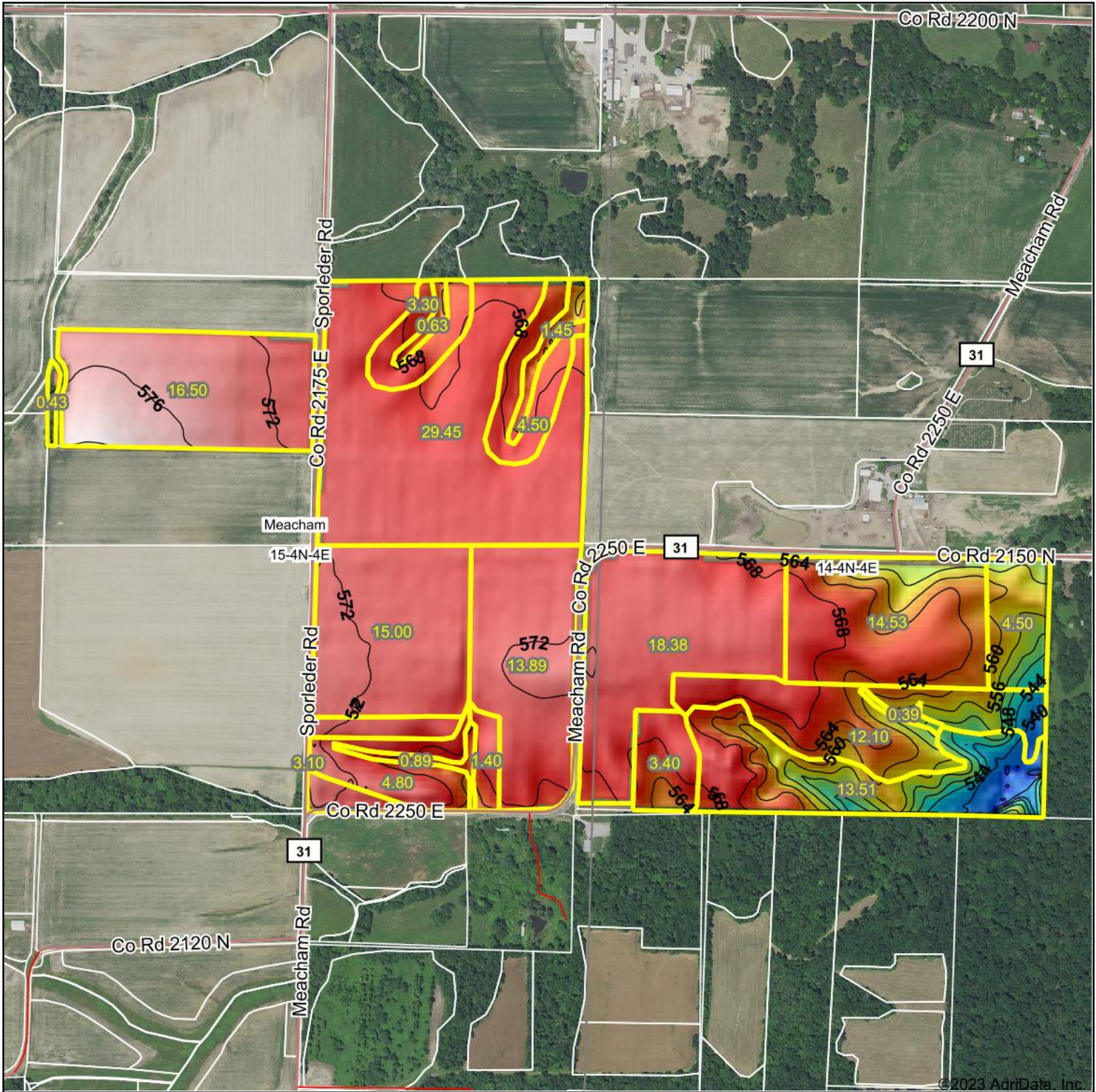
Crop yields and productivity indices for optimum management (B811) are maintained at the following NRES web site: <http://soilproductivity.nres.illinois.edu/>

** Indexes adjusted for slope and erosion according to Bulletin 811 Table S3

e Soils in the well drained group were not rated for grass-legume and are shown with a zero "0".

Soils data provided by USDA and NRCS. Soils data provided by University of Illinois at Champaign-Urbana.

Topography Hillshade



Source: USGS 10 meter dem
 Interval(ft): 4
 Min: 533.2
 Max: 580.1
 Range: 46.9
 Average: 567.6
 Standard Deviation: 6.96 ft



15-4N-4E
 Marion County
 Illinois

Boundary Center: 38° 47' 18.79, -88° 44' 1.79



Maps Provided By:



© AgriData, Inc. 2023 www.AgriDataInc.com

Field borders provided by Farm Service Agency as of 5/21/2008.

©2023 AgriData, Inc.