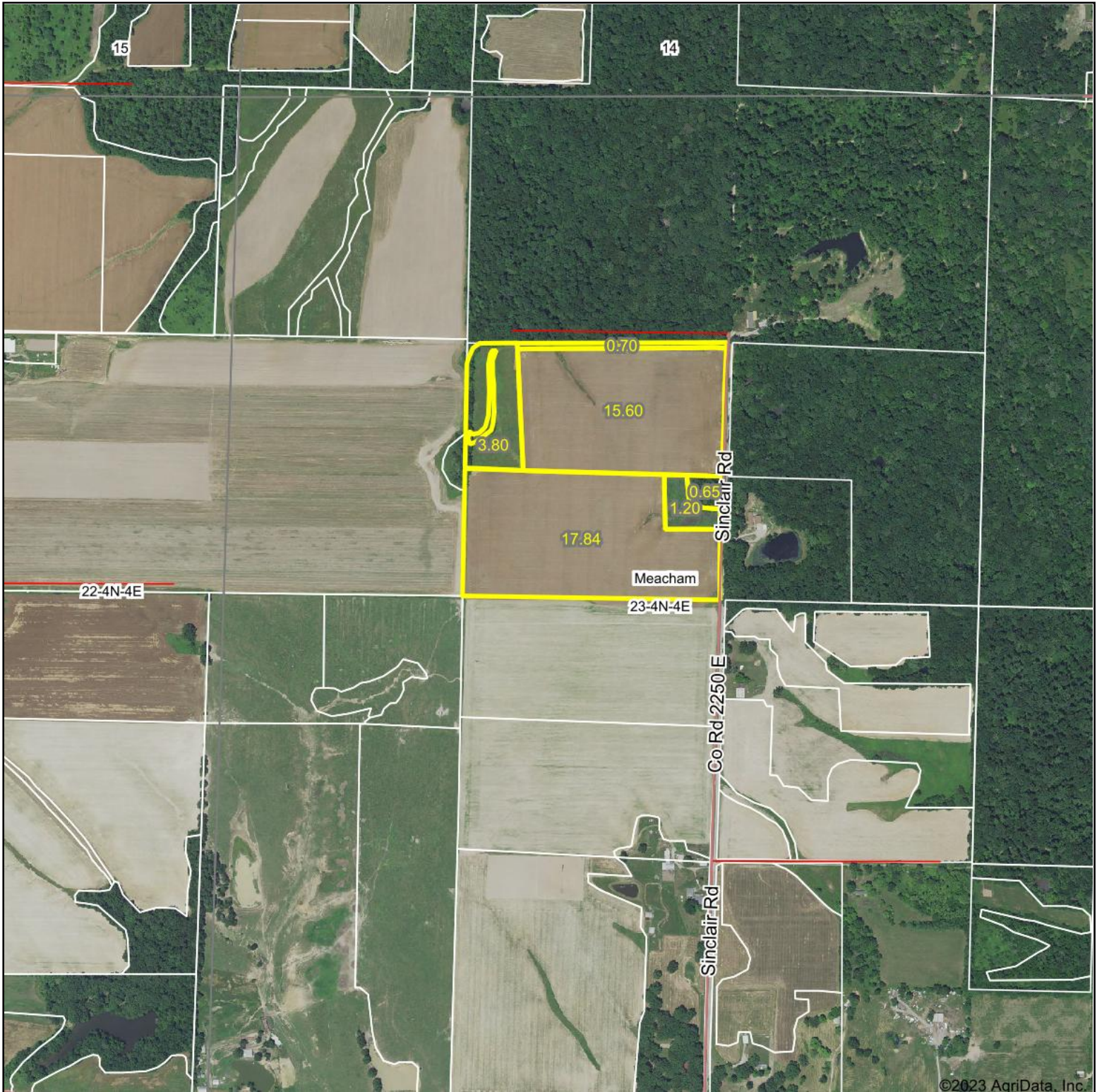


# Aerial Map



Boundary Center: 38° 46' 33, -88° 43' 35.26



**23-4N-4E**  
**Marion County**  
**Illinois**



Maps Provided By:

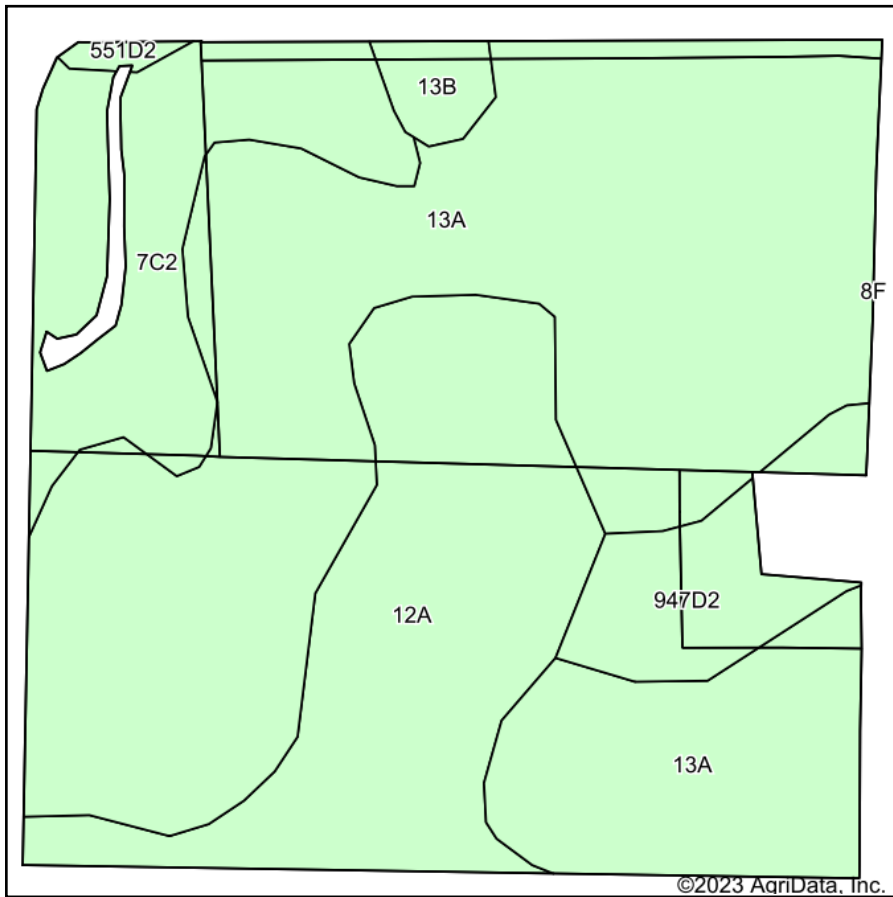


© AgriData, Inc. 2023 www.AgriDataInc.com

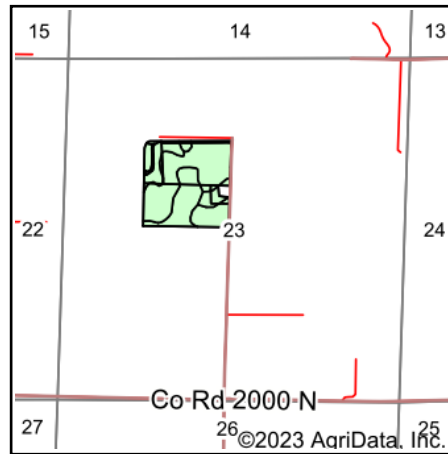
9/8/2023

Field borders provided by Farm Service Agency as of 5/21/2008.

# Soils Map



Soils data provided by USDA and NRCS.



State: **Illinois**  
 County: **Marion**  
 Location: **23-4N-4E**  
 Township: **Meacham**  
 Acres: **39.14**  
 Date: **9/8/2023**



Maps Provided By:  
  
 © AgriData, Inc. 2023 [www.AgriDataInc.com](http://www.AgriDataInc.com)



Area Symbol: IL121, Soil Area Version: 19

Code	Soil Description	Acres	Percent of field	Corn Bu/A	Soybeans Bu/A	Wheat Bu/A	Grass-legume e hay, T/A	Crop productivity index for optimum management
13A	Bluford silt loam, 0 to 2 percent slopes	23.53	60.1%	136	44	55	3.39	101
12A	Wynoose silt loam, 0 to 2 percent slopes	8.04	20.5%	128	42	51	4.26	97
**7C2	Atlas silt loam, 5 to 10 percent slopes, eroded	4.77	12.2%	**105	**37	**41	**3.16	**81
**947D2	Hickory-Passport silt loams, 10 to 18 percent slopes, eroded	2.07	5.3%	**119	**39	**50	**3.18	**88
**13B	Bluford silt loam, 2 to 5 percent slopes	0.57	1.5%	**135	**44	**54	**3.36	**100
**551D2	Gosport silt loam, 10 to 18 percent slopes, eroded	0.16	0.4%	**94	**32	**39	**2.95	**71
<b>Weighted Average</b>				<b>129.5</b>	<b>42.4</b>	<b>52.1</b>	<b>3.53</b>	<b>96.9</b>

**Table: Optimum Crop Productivity Ratings for Illinois Soil by K.R. Olson and J.M. Lang, Office of Research, ACES, University of Illinois at Champaign-Urbana.** Version: 1/2/2012 Amended Table S2 B811

Crop yields and productivity indices for optimum management (B811) are maintained at the following NRES web site: <http://soilproductivity.nres.illinois.edu/>

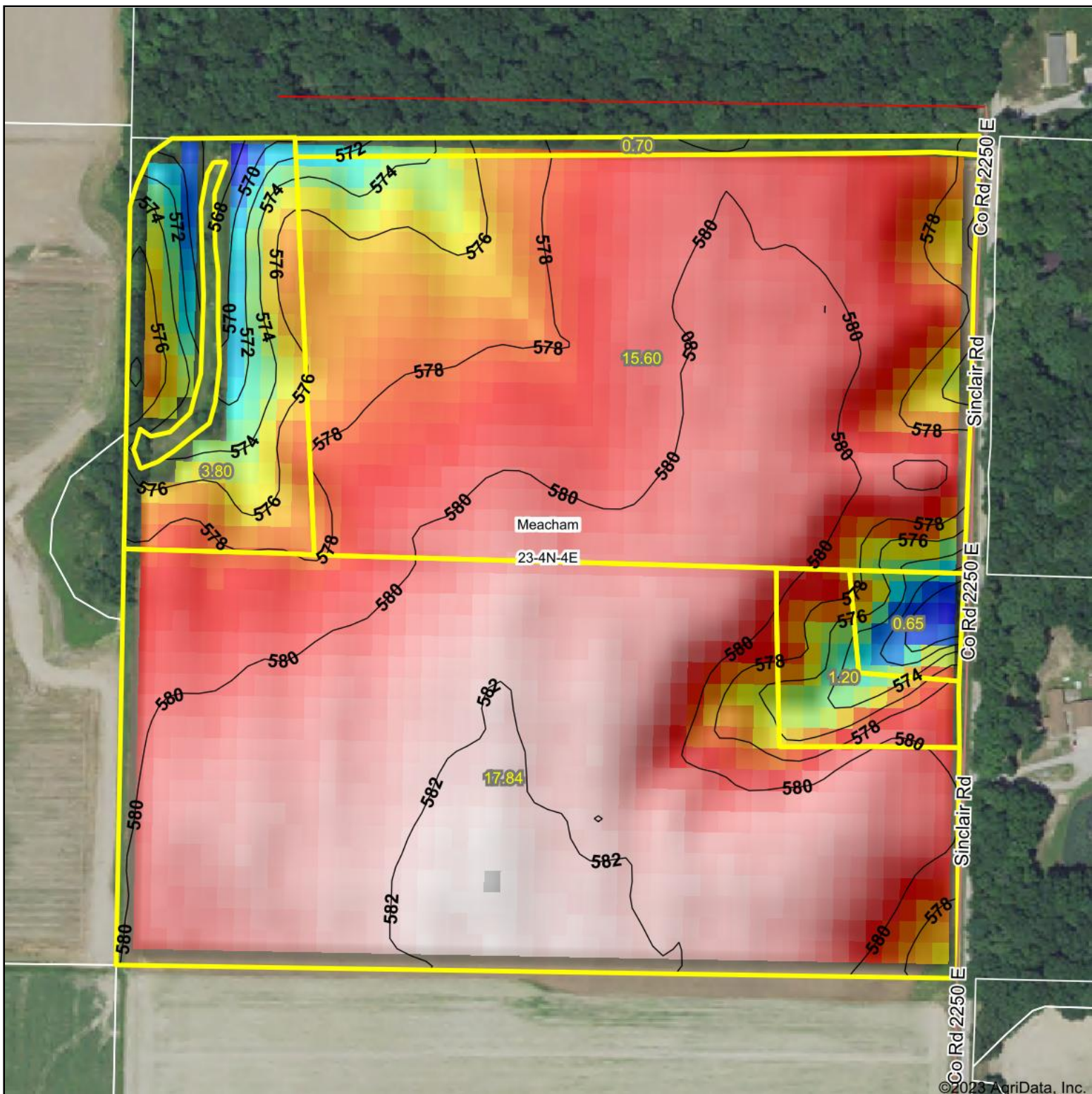
\*\* Indexes adjusted for slope and erosion according to Bulletin 811 Table S3

e Soils in the well drained group were not rated for grass-legume and are shown with a zero "0".

Soils data provided by USDA and NRCS. Soils data provided by University of Illinois at Champaign-Urbana.



# Topography Hillshade



©2023 AgriData, Inc.



Source: USGS 10 meter dem



Interval(ft): 2

Min: 567.9

Max: 582.7

Range: 14.8

Average: 579.2

Standard Deviation: 2.66 ft



9/8/2023

**23-4N-4E**  
**Marion County**  
**Illinois**

Boundary Center: 38° 46' 33, -88° 43' 35.26



Maps Provided By:

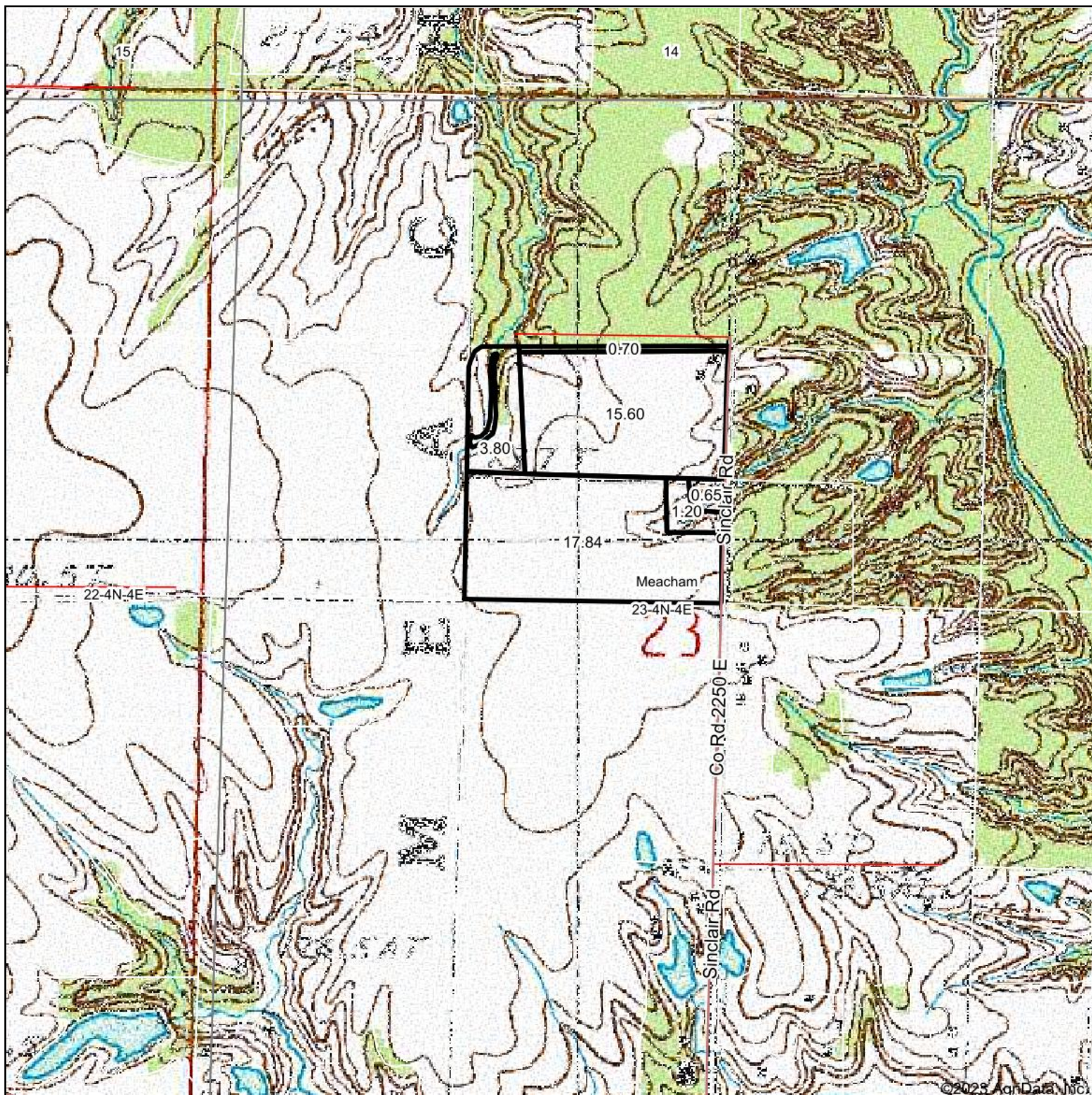


© AgriData, Inc. 2023 www.AgriDataInc.com

Field borders provided by Farm Service Agency as of 5/21/2008.



# Topography Map



©2023 AgriData, Inc.

Map Center: 38° 46' 28.94, -88° 43' 38.19



**23-4N-4E**  
**Marion County**  
**Illinois**



9/8/2023

Maps Provided By:  
**surety**  
CUSTOMIZED ONLINE MAPPING

© AgriData, Inc. 2023 www.AgrIDataInc.com

Field borders provided by Farm Service Agency as of 5/21/2008.