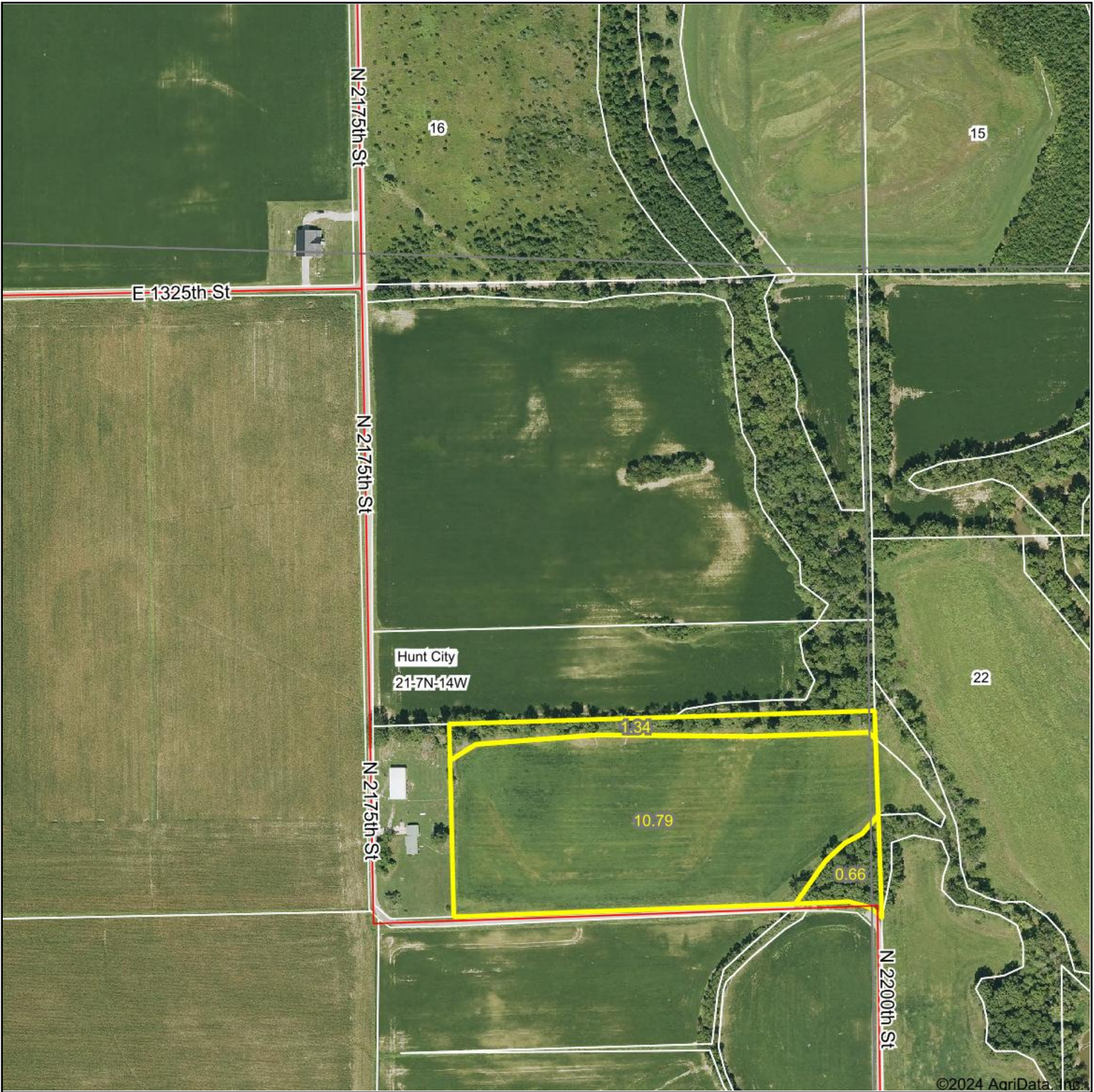


Aerial Map



Boundary Center: 39° 2' 5.55, -87° 58' 3.65



21-7N-14W
Jasper County
Illinois



Maps Provided By:

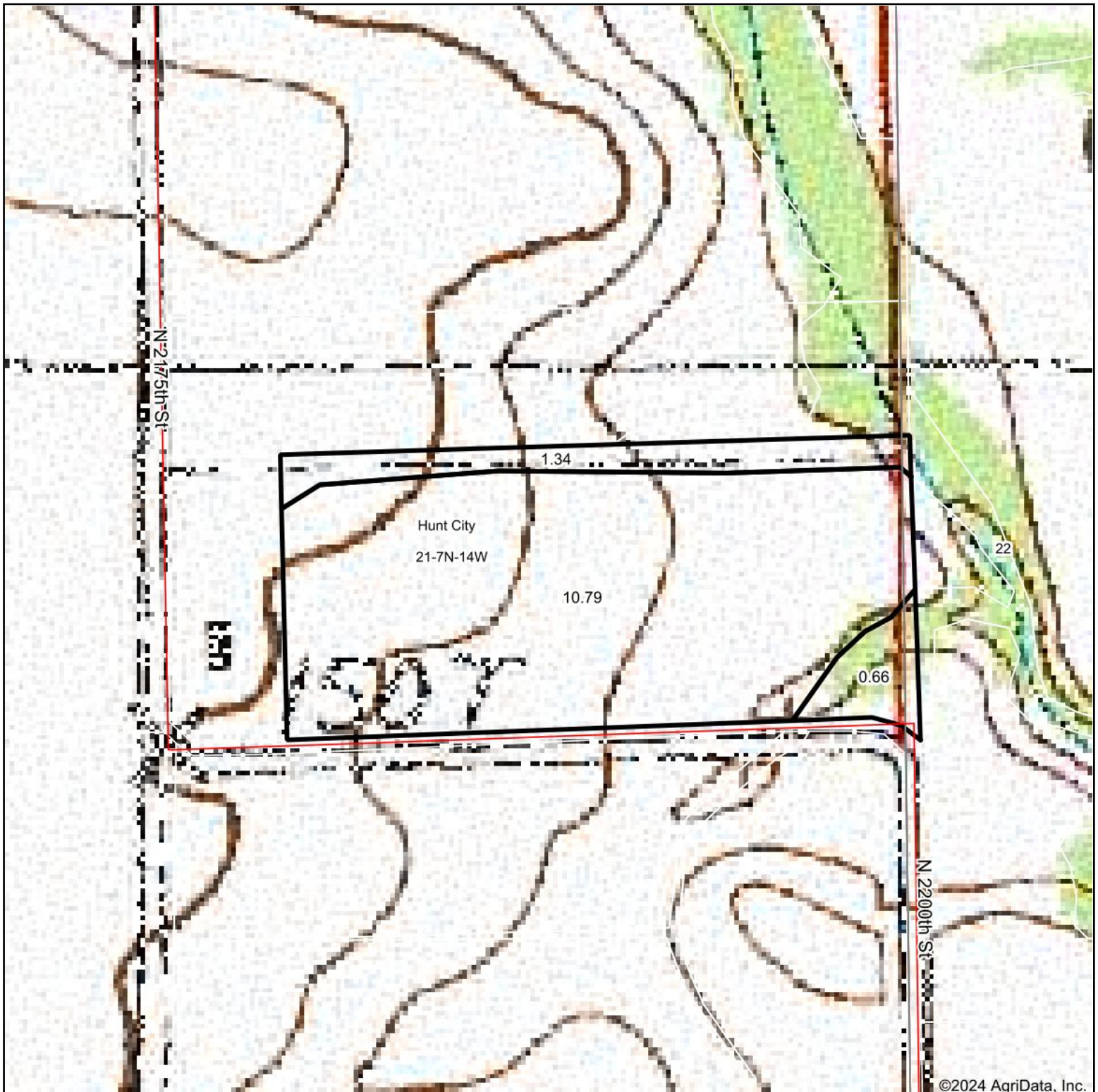


© AgriData, Inc. 2023 www.AgriDataInc.com

5/15/2024

Field borders provided by Farm Service Agency as of 5/21/2008.

Topography Map

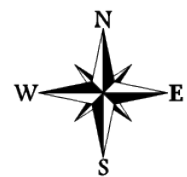


©2024 AgriData, Inc.

Map Center: 39° 2' 6.23, -87° 58' 4.83



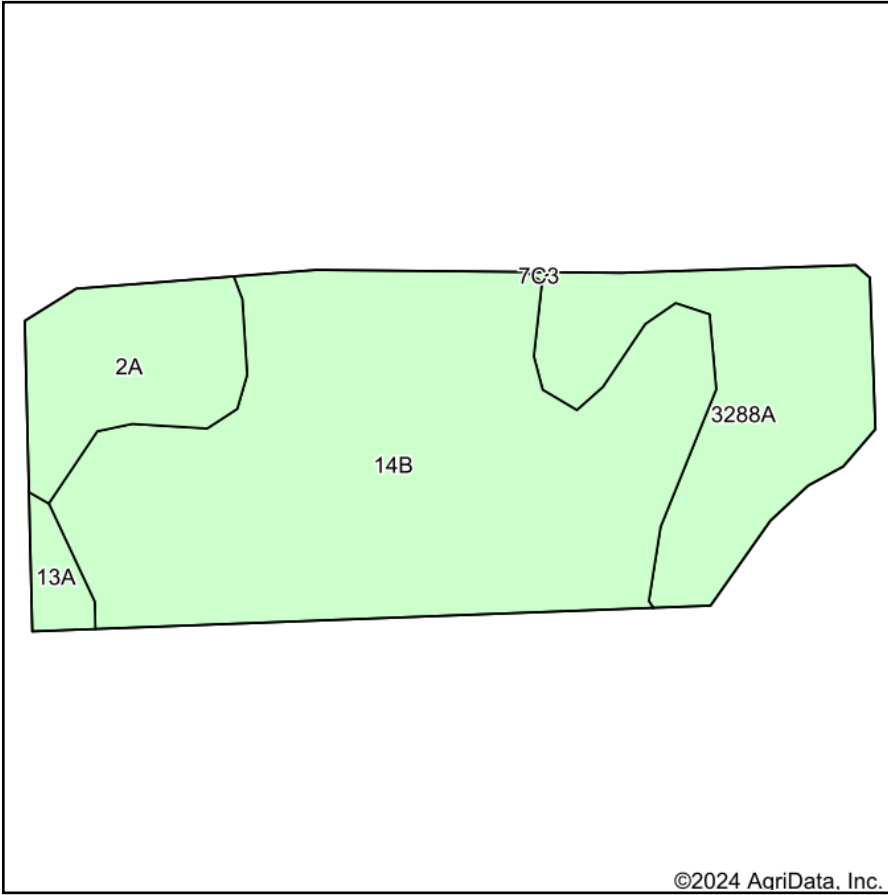
21-7N-14W
Jasper County
Illinois



Maps Provided By:
 **surety**
CUSTOMIZED ONLINE MAPPING
© AgriData, Inc. 2023 www.AgrIDataInc.com

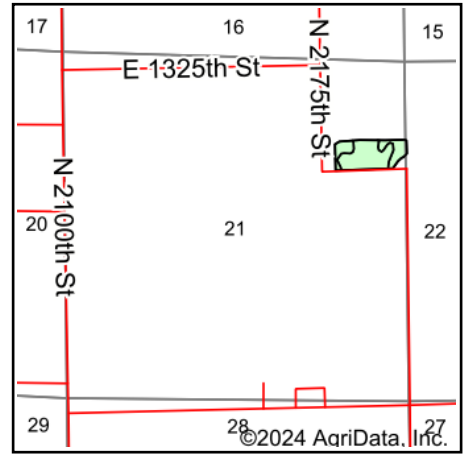
5/15/2024

Soils Map



Soils data provided by USDA and NRCS.

©2024 AgriData, Inc.



State: **Illinois**
 County: **Jasper**
 Location: **21-7N-14W**
 Township: **Hunt City**
 Acres: **10.79**
 Date: **5/15/2024**



Maps Provided By:



© AgriData, Inc. 2023

www.AgriDataInc.com



Area Symbol: IL079, Soil Area Version: 20

Code	Soil Description	Acres	Percent of field	Corn Bu/A	Soybeans Bu/A	Wheat Bu/A	Grass-legume e hay, T/A	Crop productivity index for optimum management	*n NCCPI Soybeans
**14B	Ava silt loam, 2 to 5 percent slopes	6.82	63.2%	**134	**44	**54	**3.30	**99	55
**3288A	Petrolia silty clay loam, 0 to 2 percent slopes, frequently flooded	2.41	22.3%	**146	**44	**55	**4.40	**105	55
2A	Cisne silt loam, 0 to 2 percent slopes	1.32	12.2%	149	46	59	4.60	109	71
13A	Bluford silt loam, 0 to 2 percent slopes	0.24	2.2%	136	44	55	3.40	101	62
Weighted Average				138.6	44.2	54.9	3.7	101.6	*n 57.1

Table: Optimum Crop Productivity Ratings for Illinois Soil EFOTG are sourced from Bulletin 811 calculated Map Unit Base Yield Indices, and adjusted (Adj) for slope, erosion, flooding, and surface texture. Publication Date: 02-08-2023

Crop yields and productivity (B811 EFOTG) are maintained at the following USDA web site: 2023 Illinois Soil Productivity and Yield Indices:

<https://efotg.sc.egov.usda.gov/#/state/IL/documents/section=2&folder=52809>

** Base indexes from Bulletin 811 adjusted for slope, erosion, flooding, and surface texture according to the Il. Soils EFOTG

e Soils in the well drained group were not rated for grass-legume and are shown with a zero "0".

*n: The aggregation method is "Weighted Average using all components"