

Aerial Map



©2024 AgriData, Inc.

Boundary Center: 37° 53' 14.82, -88° 24' 16.8



26-7S-7E
Saline County
Illinois



5/26/2024



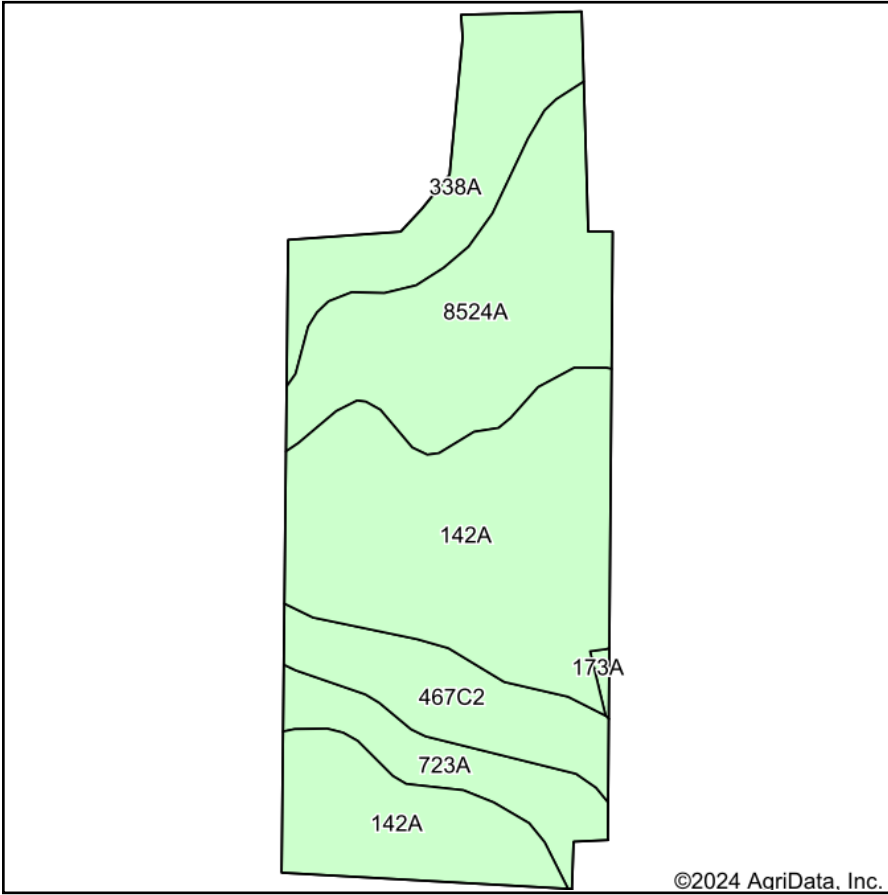
Maps Provided By:



© AgriData, Inc. 2023 www.AgriDataInc.com

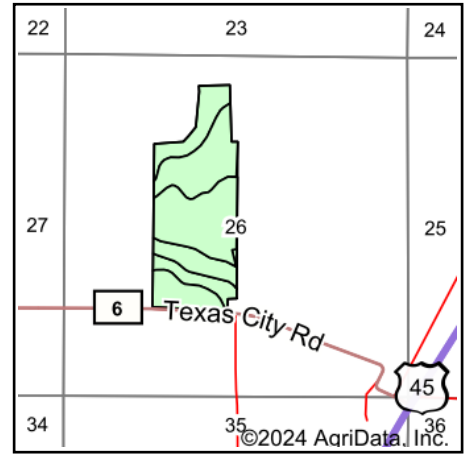
Field borders provided by Farm Service Agency as of 5/21/2008.

Soils Map



Soils data provided by USDA and NRCS.

©2024 AgriData, Inc.



State: **Illinois**
 County: **Saline**
 Location: **26-7S-7E**
 Township: **Rector**
 Acres: **88.59**
 Date: **5/26/2024**



Maps Provided By:



© AgriData, Inc. 2023

www.AgriDataInc.com



Area Symbol: IL165, Soil Area Version: 18

Code	Soil Description	Acres	Percent of field	Corn Bu/A	Soybeans Bu/A	Wheat Bu/A	Crop productivity index for optimum management	*n NCCPI Soybeans
**142A	Patton silty clay loam, 0 to 2 percent slopes	39.39	44.5%	**178	**58	**68	**132	65
**8524A	Zipp silty clay loam, 0 to 2 percent slopes, occasionally flooded	21.23	24.0%	**137	**46	**53	**103	67
338A	Hurst silt loam, 0 to 2 percent slopes	11.62	13.1%	134	44	55	100	55
**467C2	Markland silt loam, 5 to 10 percent slopes, eroded	9.12	10.3%	**126	**41	**53	**95	52
723A	Reesville silt loam, 0 to 2 percent slopes	6.95	7.8%	170	55	66	124	80
173A	McGary silt loam, 0 to 2 percent slope	0.28	0.3%	132	45	56	100	63
Weighted Average				156.3	51.3	61	116.3	*n 64

Table: Optimum Crop Productivity Ratings for Illinois Soil EFOTG are sourced from Bulletin 811 calculated Map Unit Base Yield Indices, and adjusted (Adj) for slope, erosion, flooding, and surface texture. Publication Date: 02-08-2023

Crop yields and productivity (B811 EFOTG) are maintained at the following USDA web site: 2023 Illinois Soil Productivity and Yield Indices:

<https://efotg.sc.egov.usda.gov/#/state/IL/documents/section=2&folder=52809>

** Base indexes from Bulletin 811 adjusted for slope, erosion, flooding, and surface texture according to the IL Soils EFOTG

*n: The aggregation method is "Weighted Average using all components"



Legend

- Tract Boundary
- Non-Cropland
- Cropland
- CRP

Wetland Determination Identifiers

- Restricted Use
- Limited Restrictions
- Exempt from Conservation Compliance Provisions

2024 Program Year
Map Created January 08, 2024

Farm **5839**
Tract **8324**

Tract Cropland Total: 150.64 acres

IL165_T8324_A1



Legend

- Tract Boundary
- Non-Cropland
- Cropland
- CRP

Wetland Determination Identifiers

- Restricted Use
- Limited Restrictions
- Exempt from Conservation Compliance Provisions

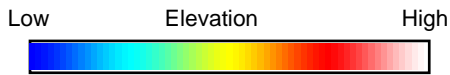
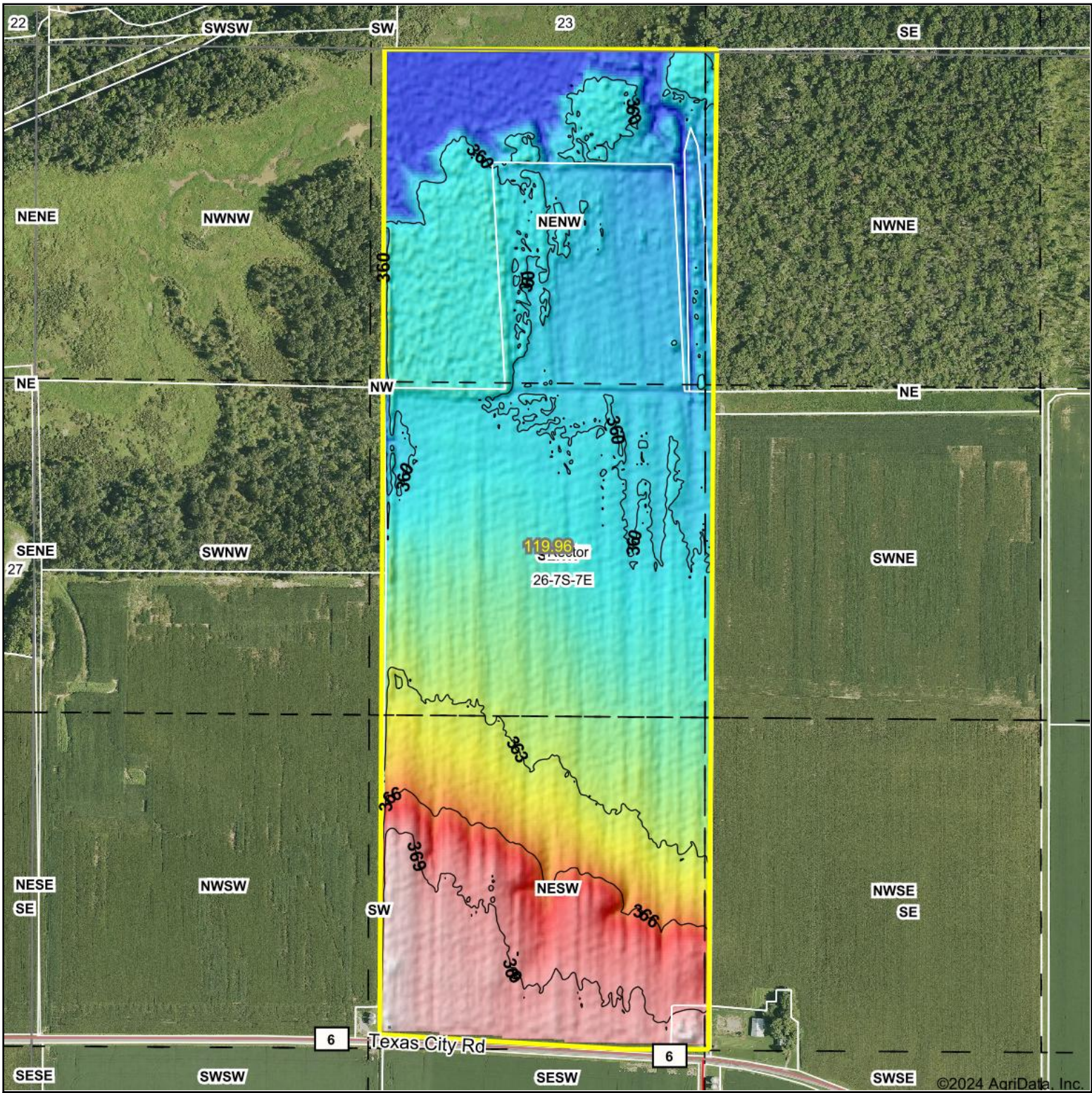
2024 Program Year
Map Created January 08, 2024

Farm **5839**
Tract **8324**

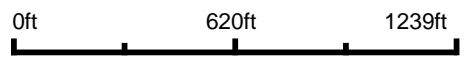
Tract Cropland Total: 150.64 acres

IL165_T8324_B1

Topography Hillshade



Source: USGS 3 meter dem
 Interval(ft): 3
 Min: 355.9
 Max: 375.0
 Range: 19.1
 Average: 362.3
 Standard Deviation: 3.71 ft



26-7S-7E
Saline County
Illinois

Boundary Center: 37° 53' 14.82, -88° 24' 16.8



© AgriData, Inc. 2023 www.AgriDataInc.com
 Field borders provided by Farm Service Agency as of 5/21/2008.

©2024 AgriData, Inc.