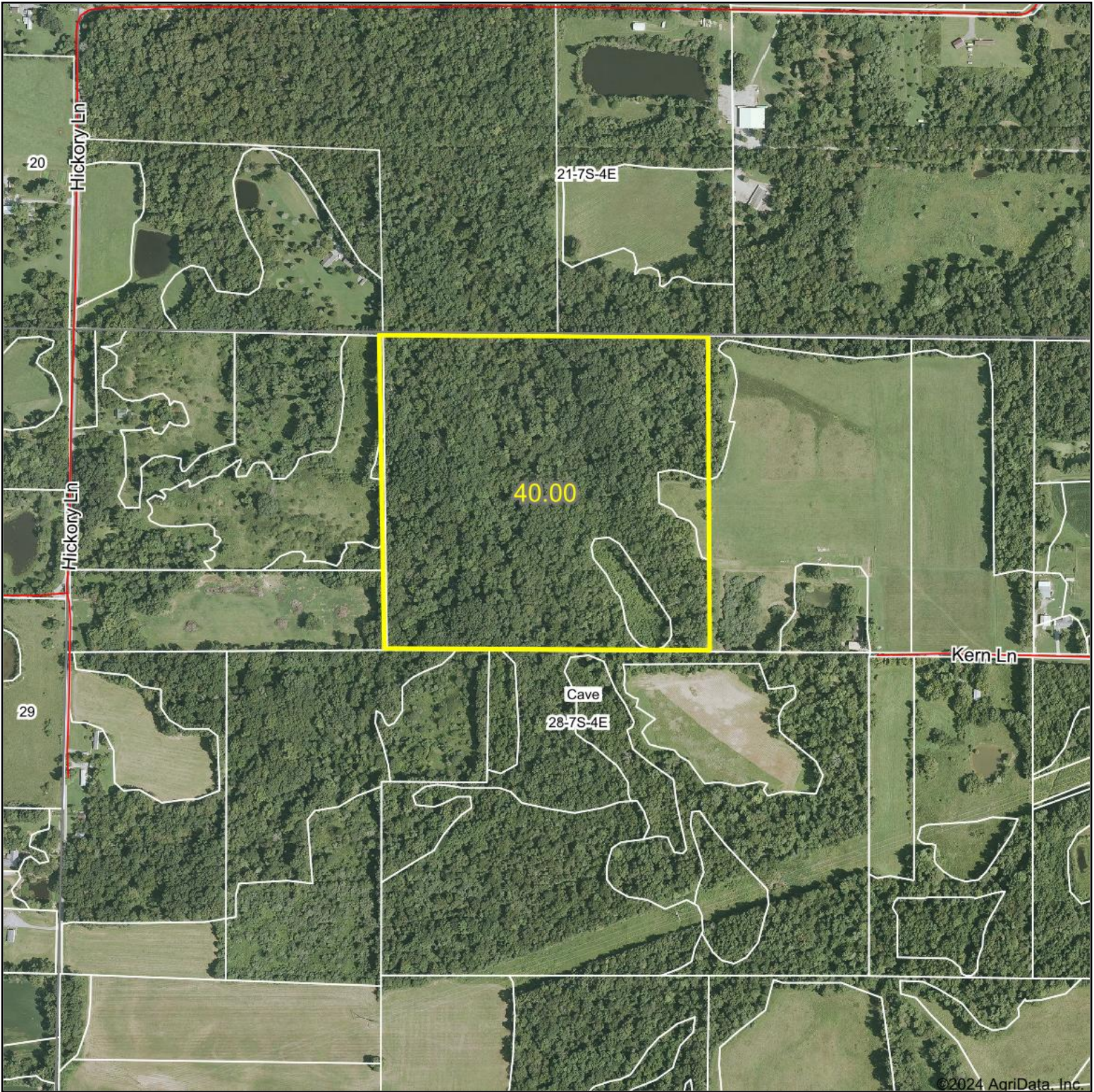
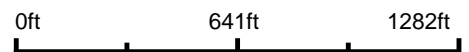


Aerial Map



Boundary Center: 37° 53' 26.07, -88° 46' 25.34



28-7S-4E
Franklin County
Illinois



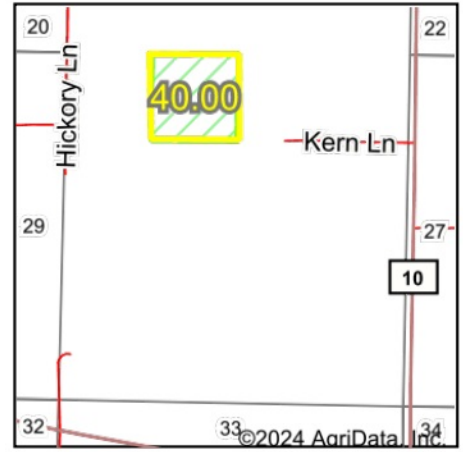
7/22/2024

PLSS Legal Description



Map Center: 37° 53' 23.86, -88° 46' 25.2

0ft 568ft 1136ft



Acres: 40
 Date: 7/22/2024
 Township: Cave
 County: Franklin
 State: Illinois



Maps Provided By:



PLSS Source: Various State Sources

PLSS Note: No Government Lots. Quarters created by equally splitting the sections

Short Legal:

NENW 28-7S-4E

Long Legal:

NE1/4 NW1/4 OF SECTION 28, TOWNSHIP 7 SOUTH, 4 EAST, FRANKLIN COUNTY, ILLINOIS