

Aerial Map



©2024 AgriData, Inc.

Boundary Center: 39° 1' 47.37, -87° 56' 26.15



23-7N-14W
Crawford County
Illinois



7/12/2024

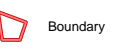
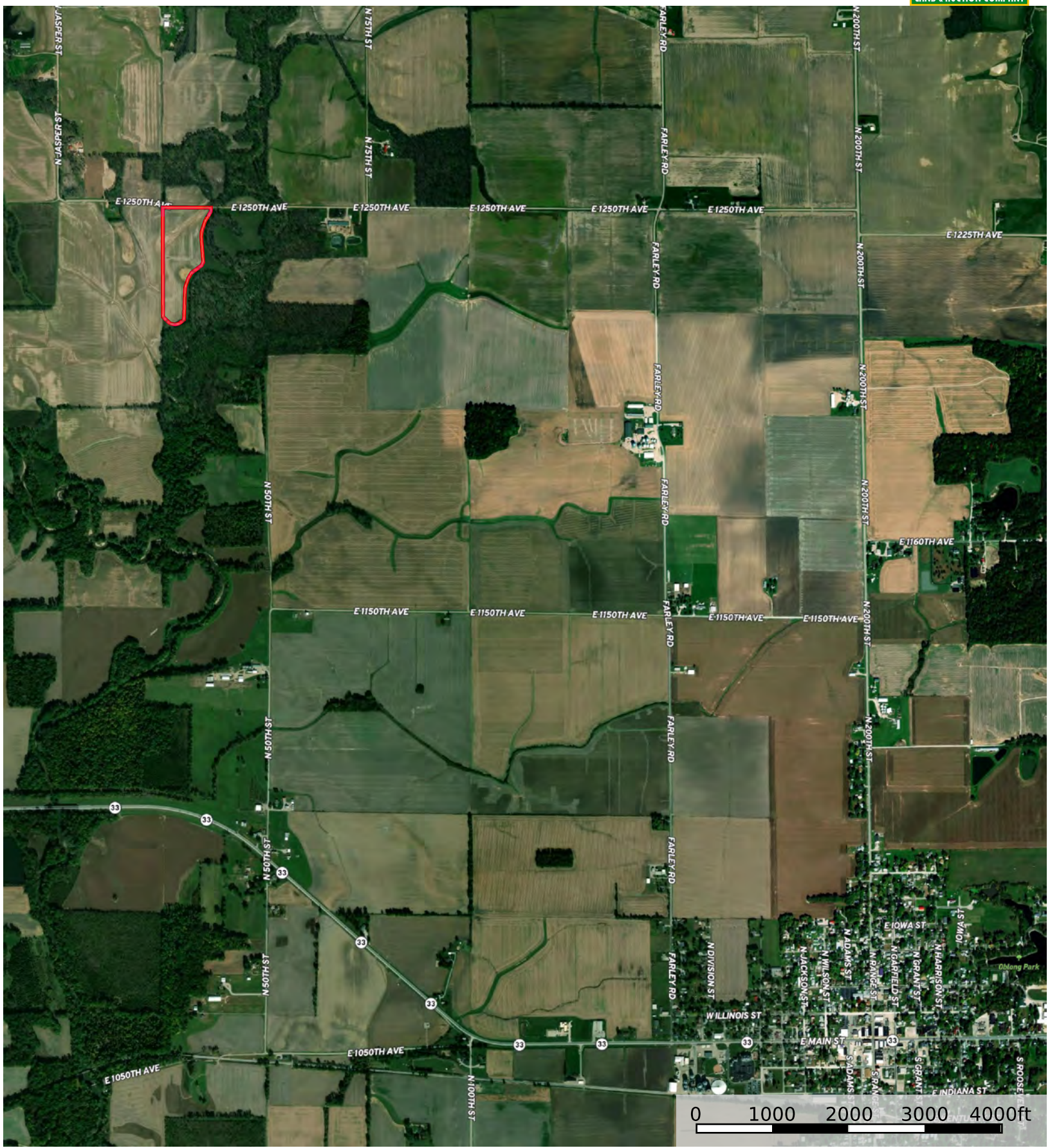


Maps Provided By:



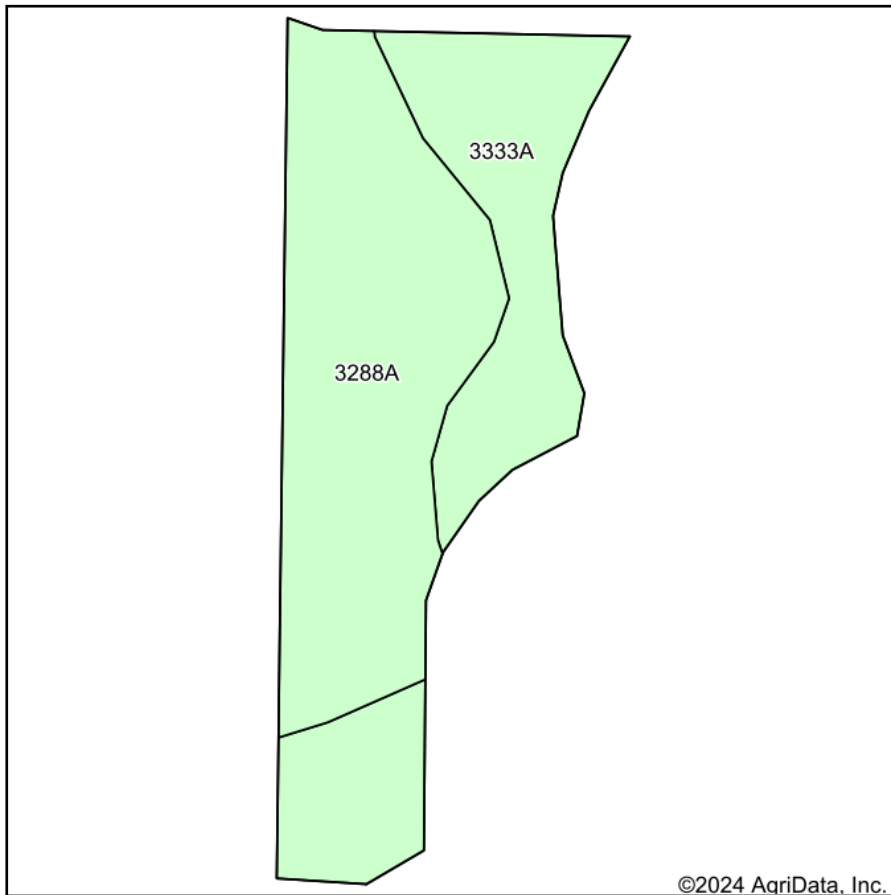
© AgriData, Inc. 2023 www.AgriDataInc.com

Field borders provided by Farm Service Agency as of 5/21/2008.

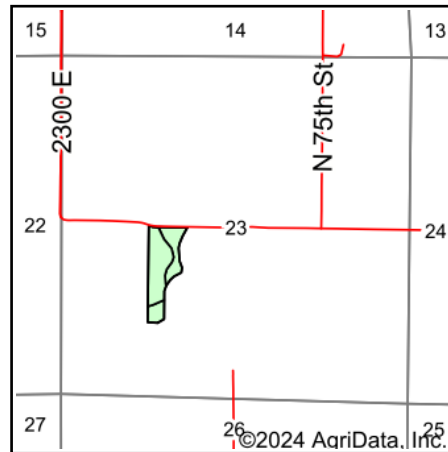


Boundary

Soils Map



Soils data provided by USDA and NRCS.



State: **Illinois**
 County: **Crawford**
 Location: **23-7N-14W**
 Township: **Oblong**
 Acres: **13.2**
 Date: **7/12/2024**



Area Symbol: IL033, Soil Area Version: 21

Code	Soil Description	Acres	Percent of field	Corn Bu/A	Soybeans Bu/A	Wheat Bu/A	Grass-legume e hay, T/A	Crop productivity index for optimum management	*n NCCPI Soybeans
**3288A	Petrolia silty clay loam, 0 to 2 percent slopes, frequently flooded	7.69	58.3%	**146	**44	**55	**4.40	**105	55
**3333A	Wakeland silt loam, 0 to 2 percent slopes, frequently flooded	5.51	41.7%	**157	**50	**61	**4.60	**115	79
Weighted Average				150.6	46.5	57.5	4.5	109.2	*n 65

Table: Optimum Crop Productivity Ratings for Illinois Soil EFOTG are sourced from Bulletin 811 calculated Map Unit Base Yield Indices, and adjusted (Adj) for slope, erosion, flooding, and surface texture. Publication Date: 02-08-2023

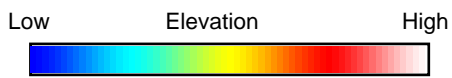
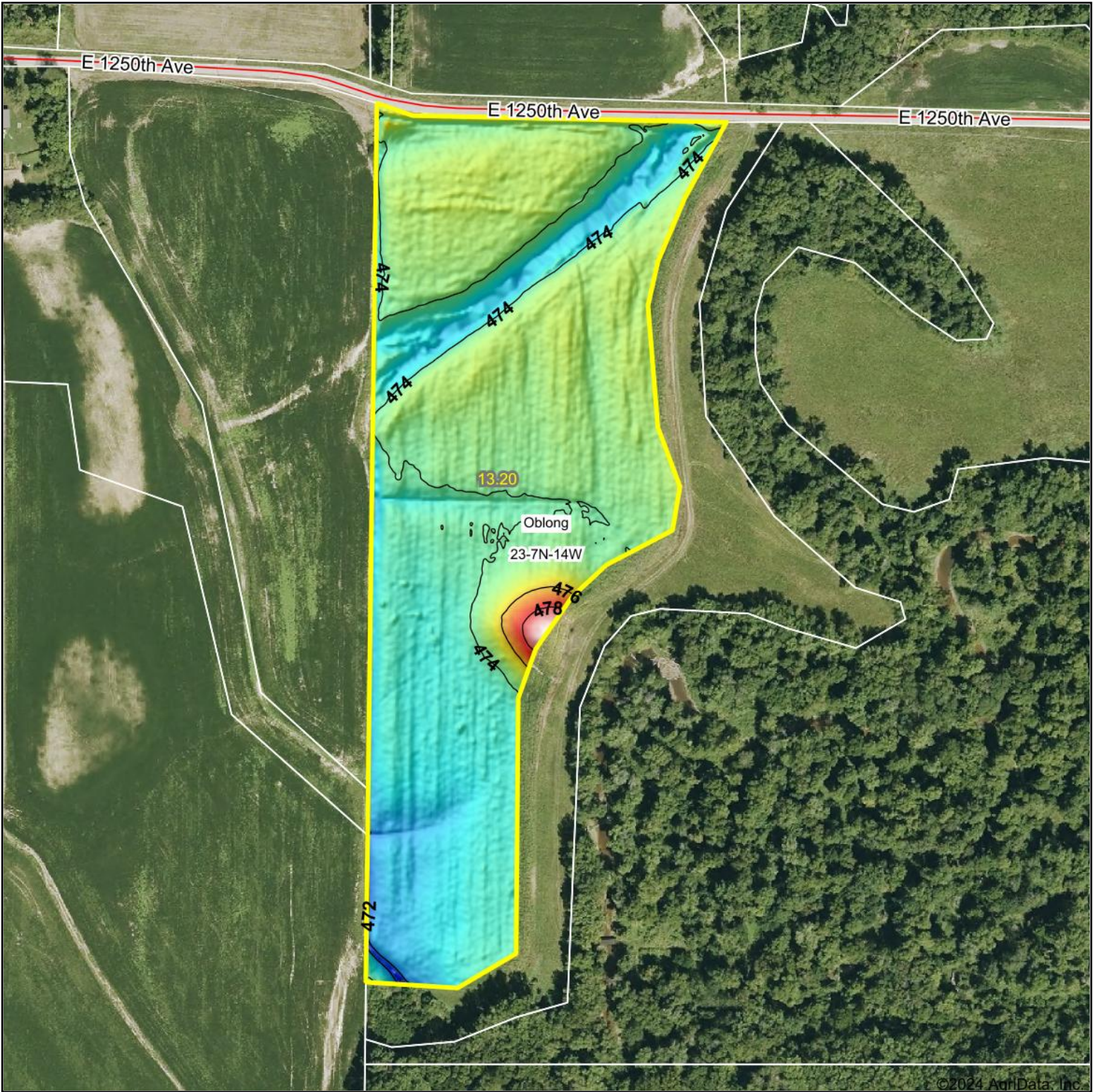
Crop yields and productivity (B811 EFOTG) are maintained at the following USDA web site: 2023 Illinois Soil Productivity and Yield Indices: <https://efotg.sc.egov.usda.gov/#/state/IL/documents/section=2&folder=52809>

** Base indexes from Bulletin 811 adjusted for slope, erosion, flooding, and surface texture according to the II. Soils EFOTG

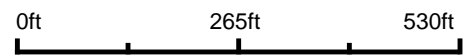
e Soils in the well drained group were not rated for grass-legume and are shown with a zero "0".

*n: The aggregation method is "Weighted Average using all components"

Topography Hillshade



Source: USGS 1 meter dem
 Interval(ft): 2
 Min: 471.0
 Max: 479.6
 Range: 8.6
 Average: 474.0
 Standard Deviation: 0.79 ft



23-7N-14W
Crawford County
Illinois

Boundary Center: 39° 1' 47.37, -87° 56' 26.15



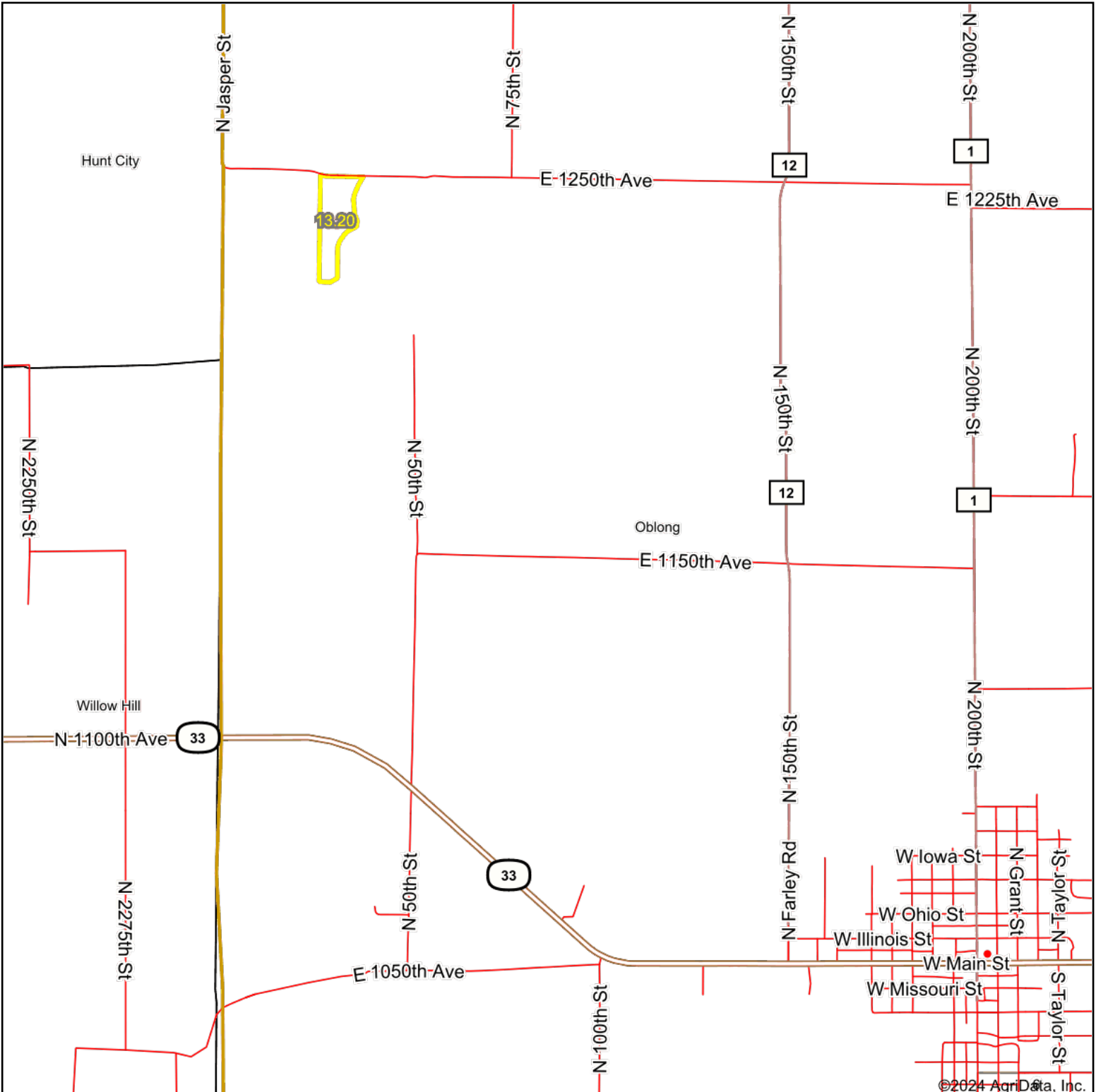
Maps Provided By:



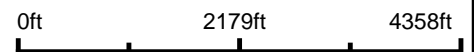
© AgriData, Inc. 2023 www.AgriDataInc.com

Field borders provided by Farm Service Agency as of 5/21/2008.

Overview Map



Map Center: 39° 1' 3.51, -87° 55' 48.99



7/12/2024



Maps Provided By:



© AgriData, Inc. 2023

www.AgridataInc.com