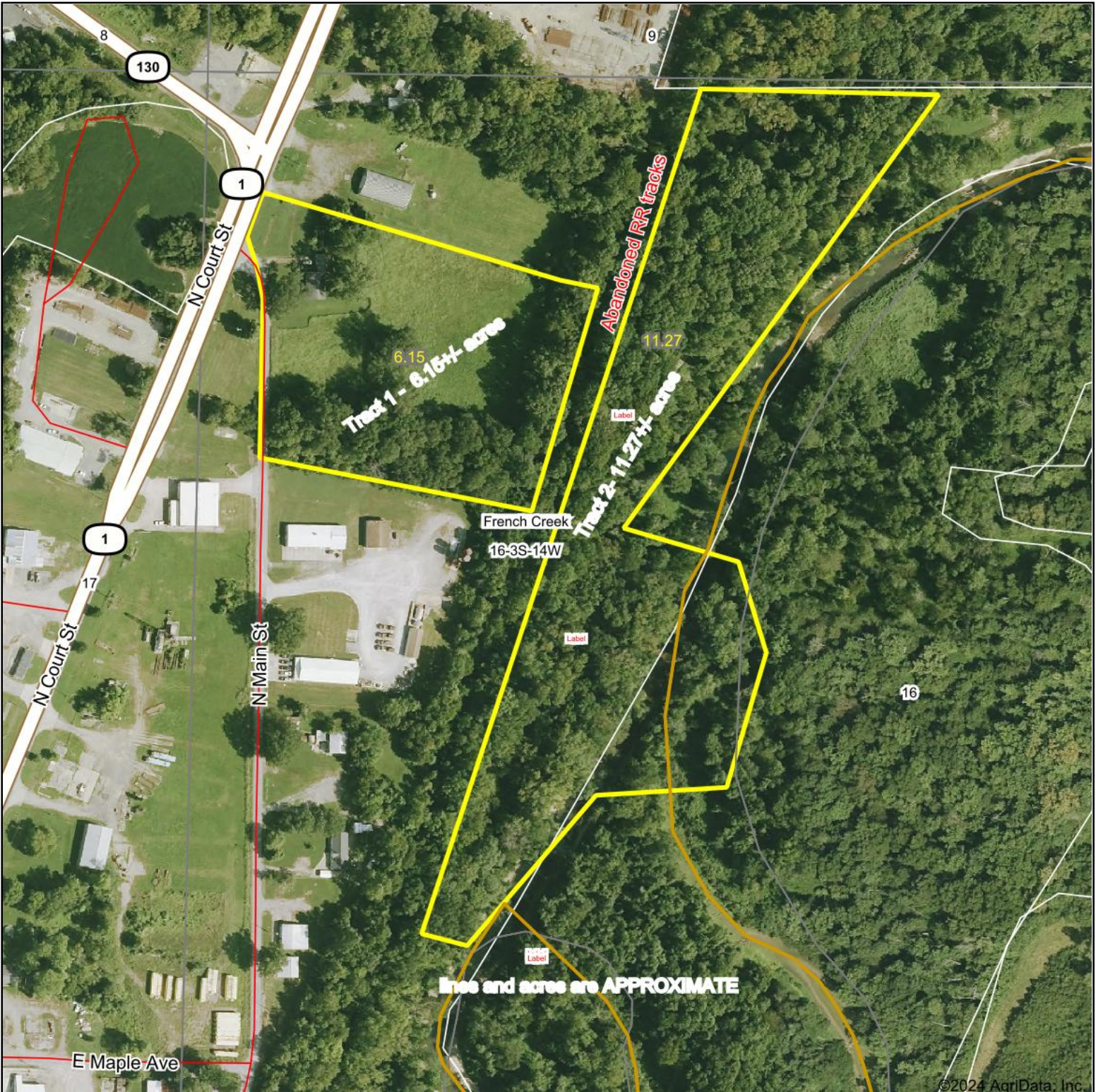
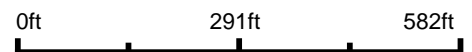


Boundary

Aerial Map



Boundary Center: 38° 16' 19.85, -87° 59' 26.86



16-3S-14W
Edwards County
Illinois



Maps Provided By:

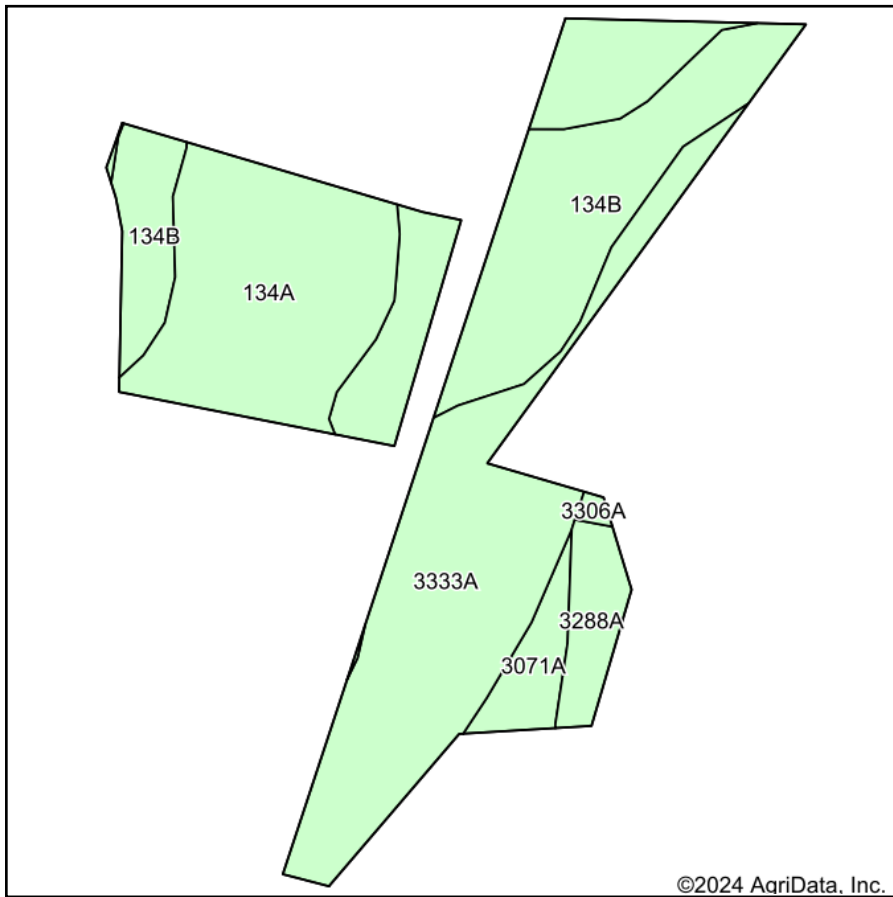


© AgriData, Inc. 2023 www.AgriDataInc.com

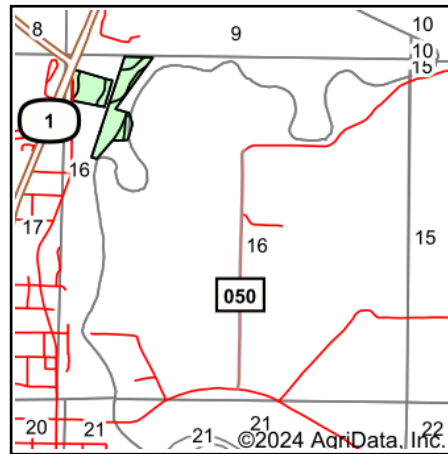
8/12/2024

Field borders provided by Farm Service Agency as of 5/21/2008.

Soils Map



Soils data provided by USDA and NRCS.



State: **Illinois**
 County: **Edwards**
 Location: **16-3S-14W**
 Township: **French Creek**
 Acres: **17.42**
 Date: **8/12/2024**



Maps Provided By:



© AgriData, Inc. 2023

www.AgriDataInc.com



Area Symbol: IL047, Soil Area Version: 15
 Area Symbol: IL185, Soil Area Version: 17

Code	Soil Description	Acres	Percent of field	Corn Bu/A	Soybeans Bu/A	Wheat Bu/A	Grass-legume e hay, T/A	Crop productivity index for optimum management	*n NCCPI Soybeans
**3333A	Wakeland silt loam, 0 to 2 percent slopes, frequently flooded	6.37	36.7%	**157	**50	**61	**4.60	**115	79
**134B	Camden silt loam, 2 to 7 percent slopes	5.37	30.8%	**163	**50	**63	**4.70	**117	78
134A	Camden silt loam, 0 to 2 percent slopes	4.18	24.0%	166	51	64	4.80	119	80
**3288A	Petrolia silty clay loam, 0 to 2 percent slopes, frequently flooded	0.77	4.4%	**146	**44	**55	**4.40	**105	55
**3071A	Darwin silty clay, 0 to 2 percent slopes, frequently flooded	0.67	3.8%	**133	**45	**54	**4.00	**100	37
**3306A	Allison silty clay loam, 0 to 2 percent slopes, frequently flooded	0.06	0.3%	**166	**52	**63	**6.20	**122	69
Weighted Average				159.6	49.8	61.8	4.7	115.6	*n 76.2

Table: Optimum Crop Productivity Ratings for Illinois Soil EFOTG are sourced from Bulletin 811 calculated Map Unit Base Yield Indices, and adjusted (Adj) for slope, erosion, flooding, and surface texture. Publication Date: 02-08-2023

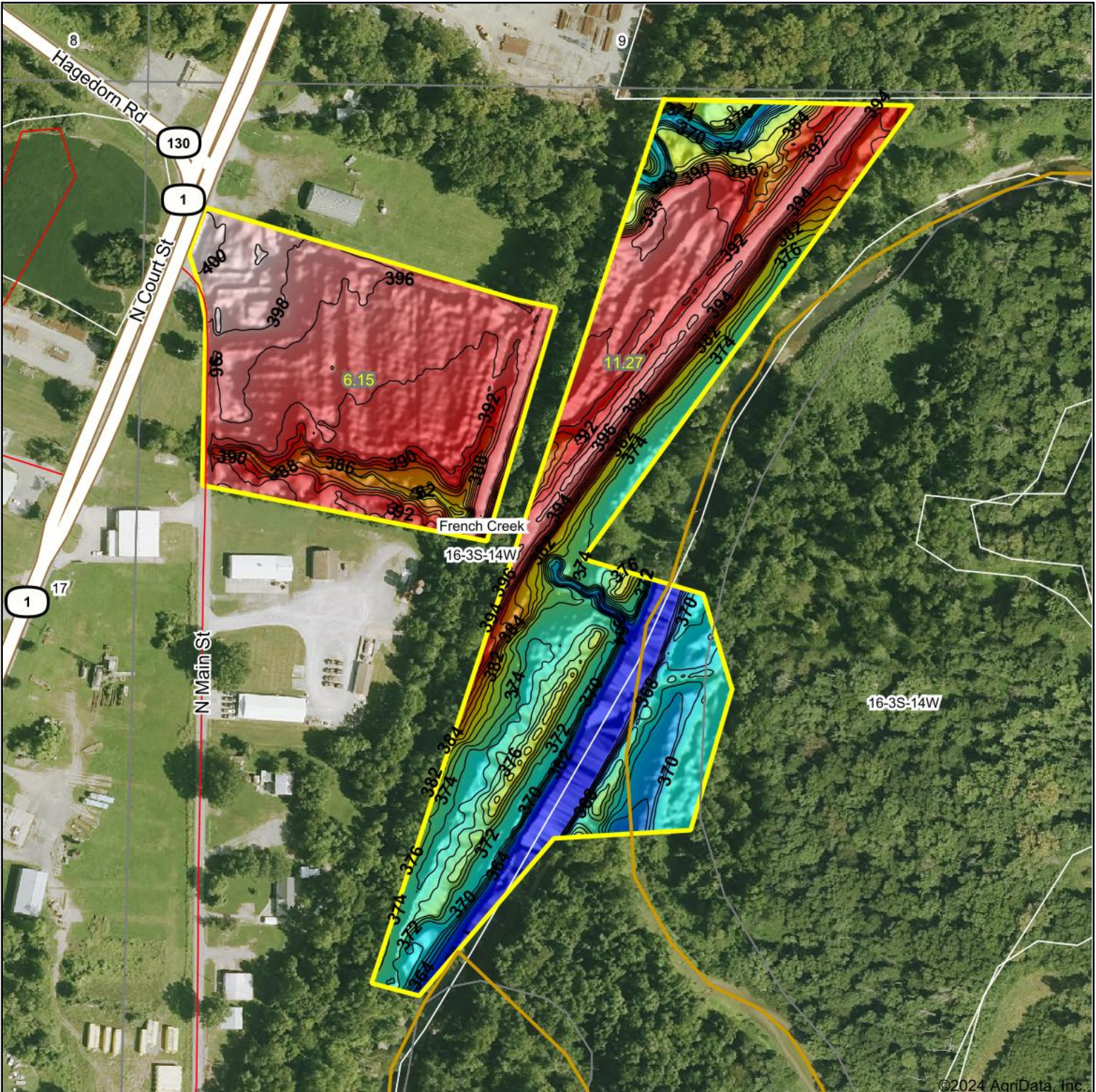
Crop yields and productivity (B811 EFOTG) are maintained at the following USDA web site: 2023 Illinois Soil Productivity and Yield Indices: <https://efotg.sc.egov.usda.gov/#/state/IL/documents/section=2&folder=52809>

** Base indexes from Bulletin 811 adjusted for slope, erosion, flooding, and surface texture according to the Il. Soils EFOTG

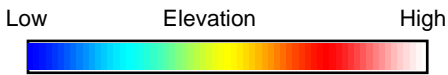
e Soils in the well drained group were not rated for grass-legume and are shown with a zero "0".

*n: The aggregation method is "Weighted Average using all components"

Topography Hillshade



©2024 AgriData, Inc.



Source: USGS 1 meter dem
 Interval(ft): 2
 Min: 359.9
 Max: 401.4
 Range: 41.5
 Average: 384.2
 Standard Deviation: 11.84 ft



16-3S-14W
Edwards County
Illinois

Boundary Center: 38° 16' 19.85, -87° 59' 26.86



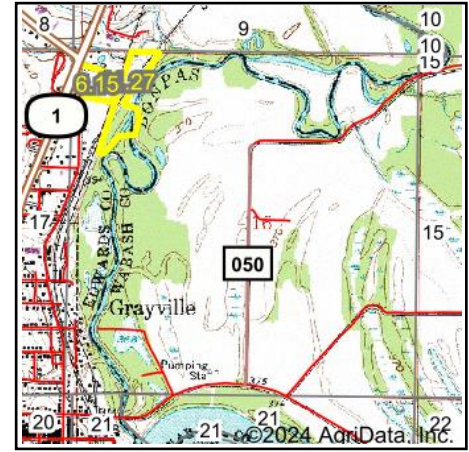
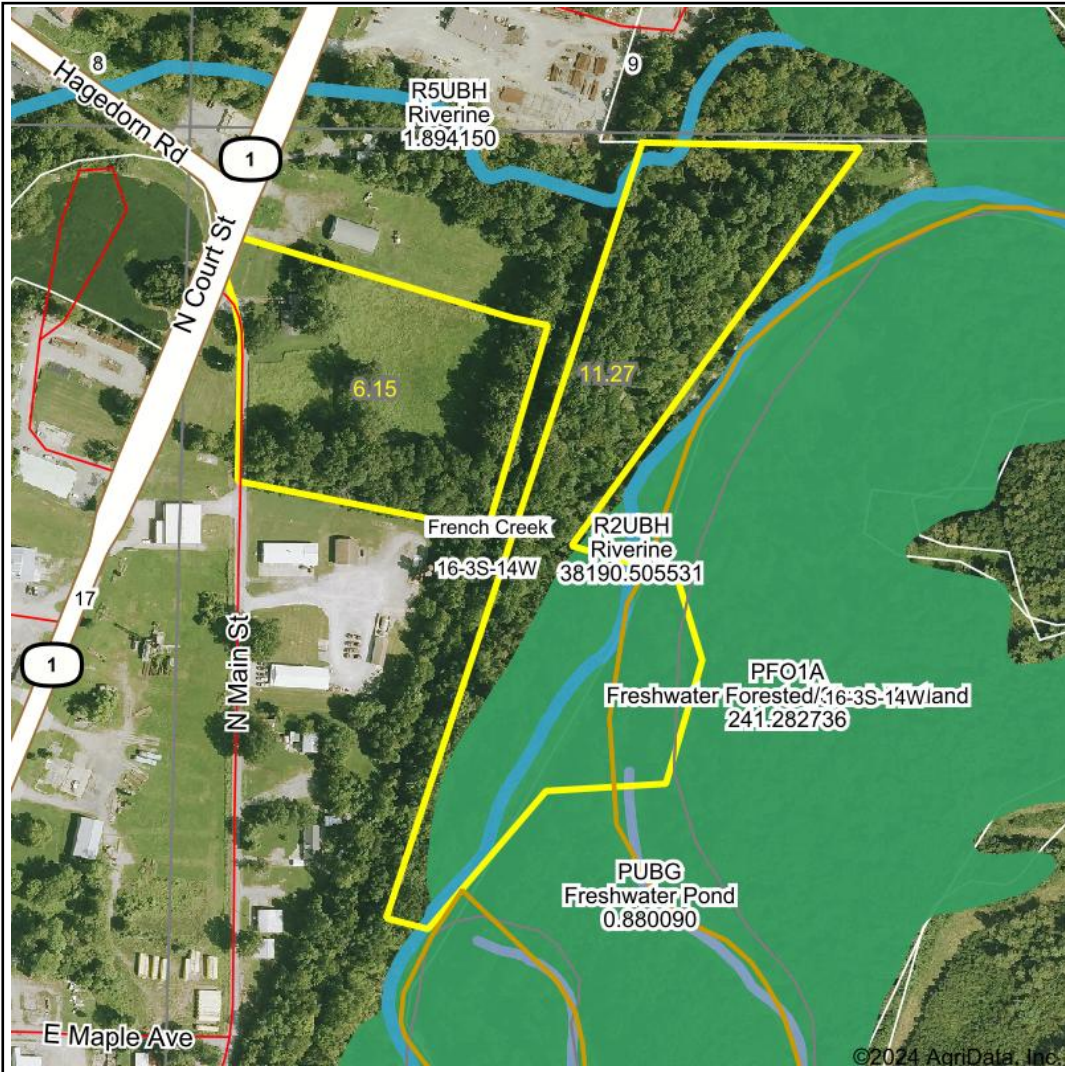
Maps Provided By:



© AgriData, Inc. 2023 www.AgriDataInc.com

Field borders provided by Farm Service Agency as of 5/21/2008.

Wetlands Map



State: **Illinois**
 Location: **16-3S-14W**
 County: **Edwards**
 Township: **French Creek**
 Date: **8/12/2024**


 Maps Provided By:

© AgriData, Inc. 2023 www.AgriDataInc.com



0ft 448ft 896ft

Classification Code	Type	Acres
PFO1A	Freshwater Forested/Shrub Wetland	4.21
R2UBH	Riverine	0.53
R5UBH	Riverine	0.08
PUBG	Freshwater Pond	0.02
Total Acres		4.84

Data Source: National Wetlands Inventory website. U.S. DoI, Fish and Wildlife Service, Washington, D.C. <http://www.fws.gov/wetlands/>