



Boundary

Aerial Map



©2024 AgriData, Inc.

Boundary Center: 38° 16' 38.25, -88° 56' 36.92



12-3S-2E
Jefferson County
Illinois

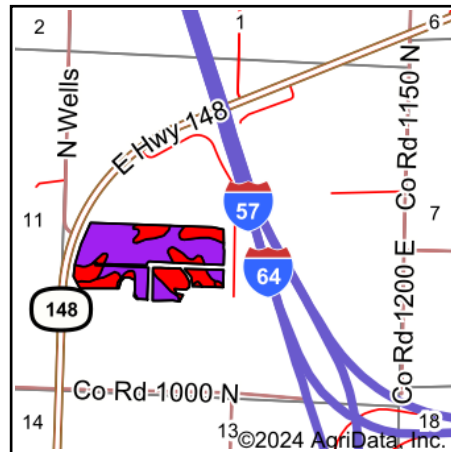
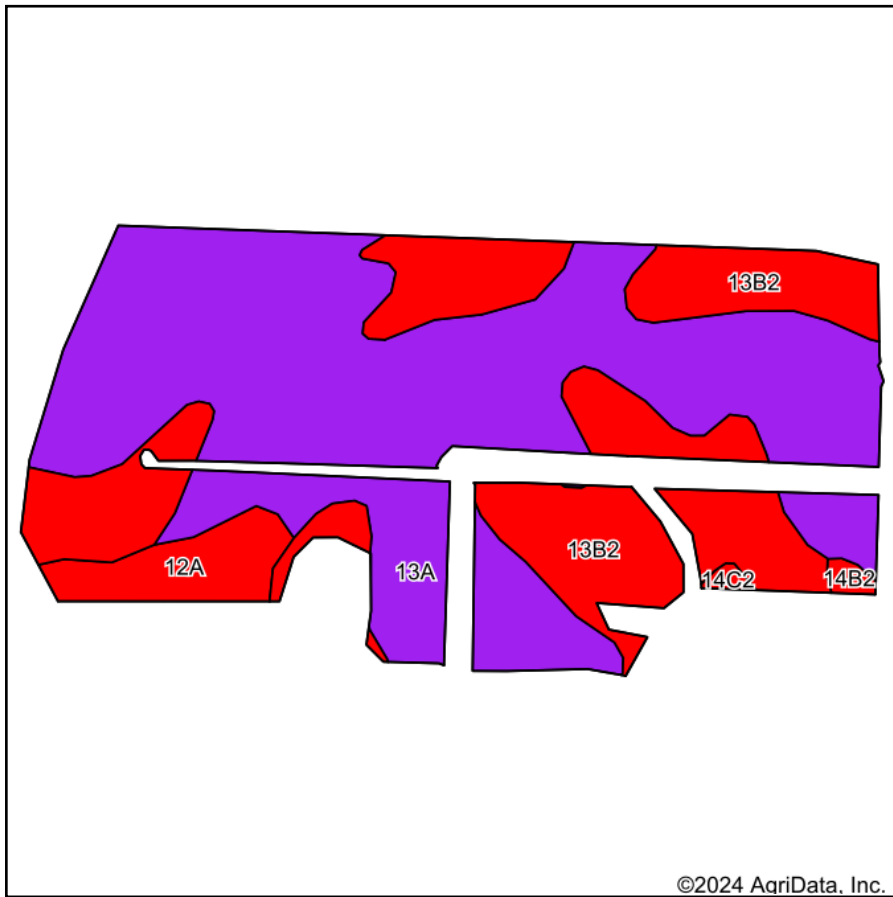


Maps Provided By:
surety
CUSTOMIZED ONLINE MAPPING
© AgriData, Inc. 2023 www.AgriDataInc.com

8/17/2024

Field borders provided by Farm Service Agency as of 5/21/2008.

Soils Map



State: **Illinois**
 County: **Jefferson**
 Location: **12-3S-2E**
 Township: **McClellan**
 Acres: **47.47**
 Date: **8/17/2024**



Soils data provided by USDA and NRCS.

©2024 AgriData, Inc.

© AgriData, Inc. 2023

www.AgriDataInc.com

Area Symbol: IL081, Soil Area Version: 16

Code	Soil Description	Acres	Percent of field	Il. State Productivity Index Legend	Corn Bu/A	Soybeans Bu/A	Wheat Bu/A	Grass-legume e e hay, T/A	Crop productivity index for optimum management	*n NCCPI Soybeans
13A	Bluford silt loam, 0 to 2 percent slopes	29.59	62.3%		136	44	55	3.40	101	62
**13B2	Bluford silt loam, 2 to 5 percent slopes, eroded	15.15	31.9%		**129	**42	**52	**3.20	**96	45
12A	Wynoose silt loam, 0 to 2 percent slopes	2.35	5.0%		128	42	51	4.30	97	49
**14B2	Ava silt loam, 2 to 5 percent slopes, eroded	0.23	0.5%		**126	**41	**51	**3.10	**93	38
**14C2	Ava silt loam, 5 to 10 percent slopes, eroded	0.15	0.3%		**120	**39	**49	**2.90	**89	36
Weighted Average					133.3	43.2	53.8	3.4	99.1	*n 55.7

Table: Optimum Crop Productivity Ratings for Illinois Soil EFOTG are sourced from Bulletin 811 calculated Map Unit Base Yield Indices, and adjusted (Adj) for slope, erosion, flooding, and surface texture. Publication Date: 02-08-2023

Crop yields and productivity (B811 EFOTG) are maintained at the following USDA web site: 2023 Illinois Soil Productivity and Yield Indices:

<https://efotg.sc.egov.usda.gov/#/state/IL/documents/section=2&folder=52809>

** Base indexes from Bulletin 811 adjusted for slope, erosion, flooding, and surface texture according to the Il. Soils EFOTG

e Soils in the well drained group were not rated for grass-legume and are shown with a zero "0".

*n: The aggregation method is "Weighted Average using all components"

Topography Contours



©2024 AgriData, Inc.



Source: USGS 1 meter dem
 Interval(ft): 3.0
 Min: 460.4
 Max: 493.4
 Range: 33.0
 Average: 479.8
 Standard Deviation: 6.04 ft



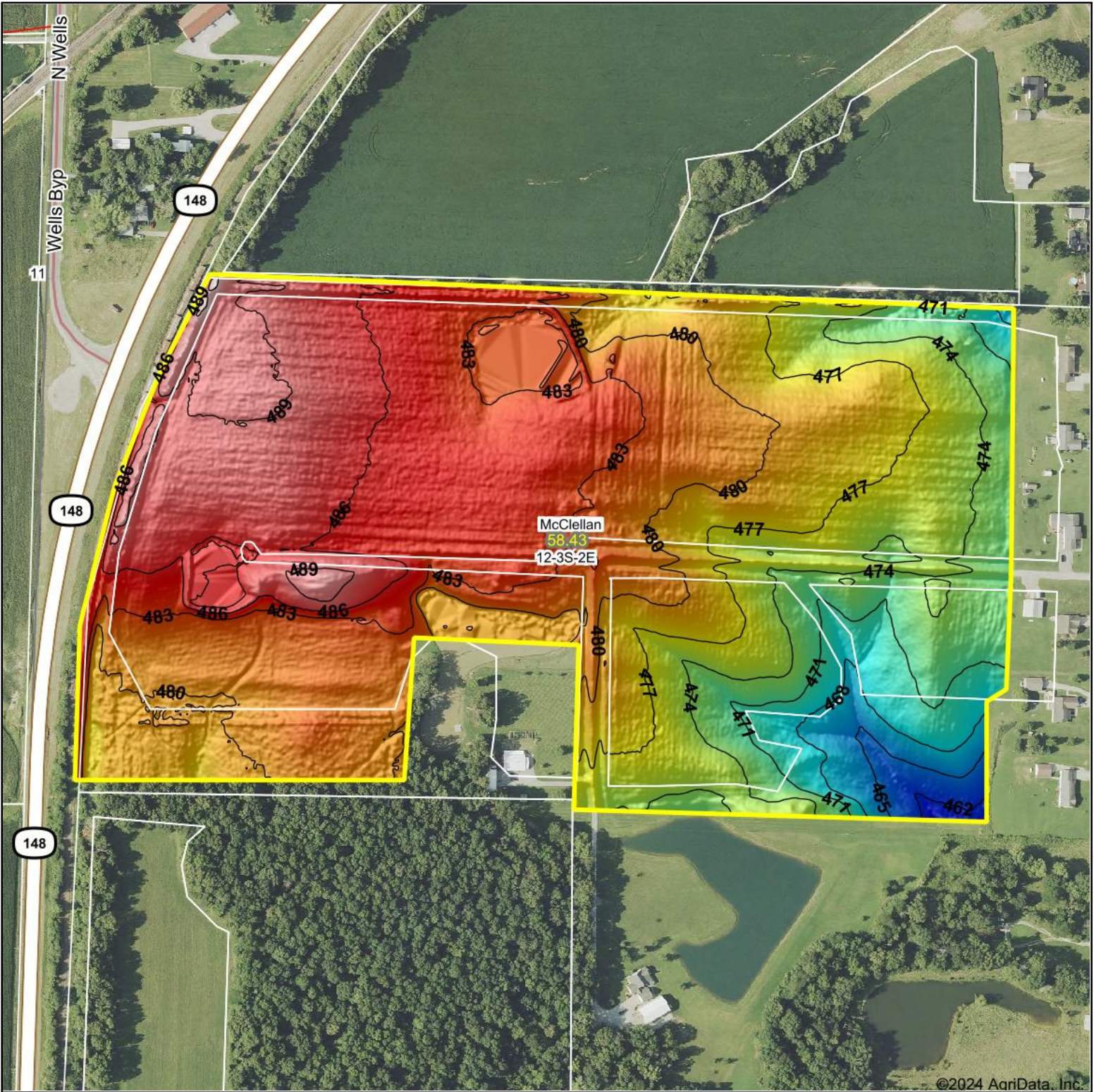
8/17/2024

12-3S-2E
Jefferson County
Illinois

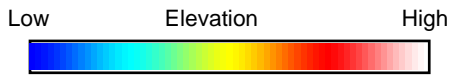
Boundary Center: 38° 16' 38.25, -88° 56' 36.92

Field borders provided by Farm Service Agency as of 5/21/2008.

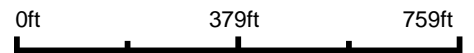
Topography Hillshade



©2024 AgriData, Inc.



Source: USGS 1 meter dem



Interval(ft): 3

Min: 460.4

Max: 493.4

Range: 33.0

Average: 479.8

Standard Deviation: 6.04 ft



8/17/2024

12-3S-2E
Jefferson County
Illinois

Boundary Center: 38° 16' 38.25, -88° 56' 36.92



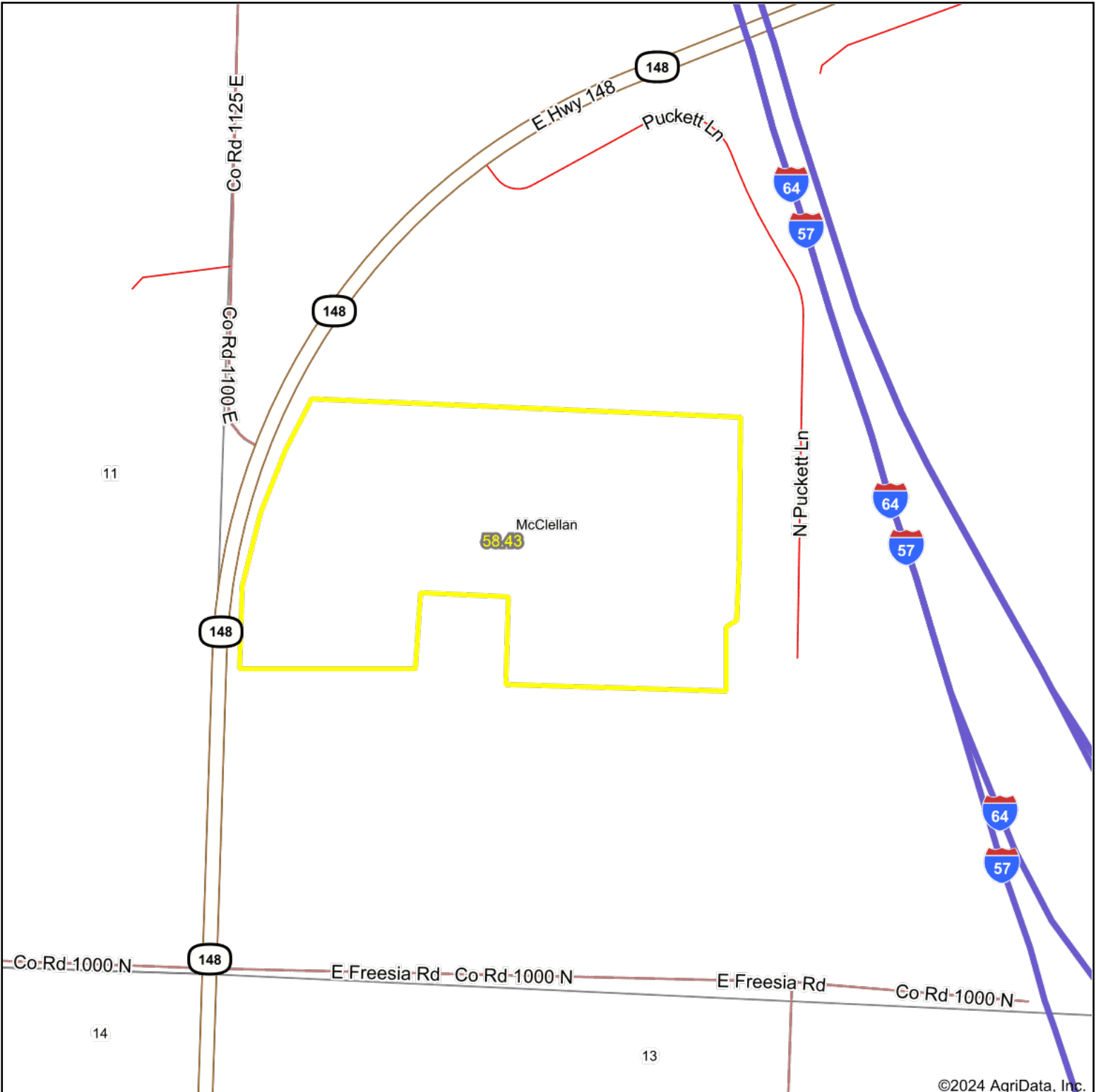
Maps Provided By:



© AgriData, Inc. 2023 www.AgriDataInc.com

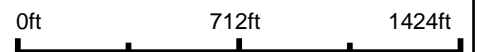
Field borders provided by Farm Service Agency as of 5/21/2008.

Overview Map



©2024 AgriData, Inc.

Map Center: 38° 16' 38.15, -88° 56' 33.71



Maps Provided By:



© AgriData, Inc. 2023

www.AgriDataInc.com



8/17/2024