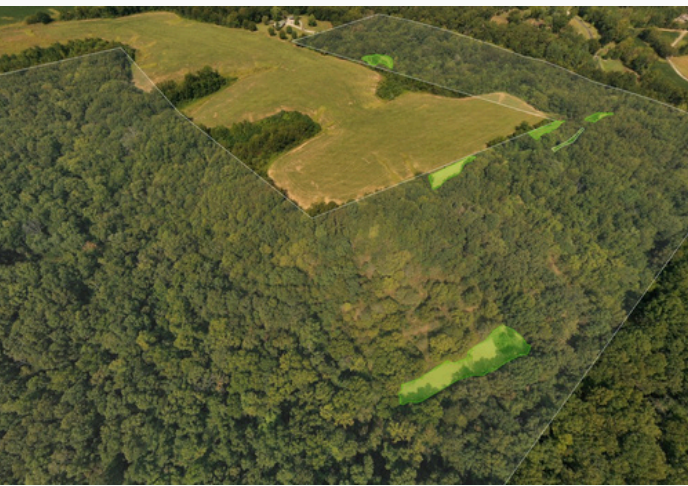


# FOR SALE

## 74.56+/- ACRES

### RANDOLPH COUNTY IL



**Address: County Farm Rd, Chester IL**

**List Price: \$5,750 / Acre**

### ABOUT THIS PROPERTY:

RANDOLPH COUNTY HAD THE HIGHEST KILL COUNT FOR THE 2023 SHOTGUN WHITETAIL SEASON. THIS PROPERTY LOCATED JUST OUTSIDE OF CHESTER ABOVE THE MISSISSIPPI RIVER VALLEY STACKS UP! WHITETAIL OR TURKEY, THIS ONE WILL DELIVER! AN ABUNDANCE OF POTENTIAL FOR THE DEER/TURKEY HUNTER. THE LAYOUT OF THIS PROPERTY ALLOWS FOR NUMEROUS SETUPS. EXISTING SETUPS INCLUDE 2 SHOOTING HOUSES, A FEW 2-MAN BUDDY STANDS, AND SEVERAL 20-FT LADDER STANDS.



THINKING ABOUT BUILDING? FRONTAGE ALONG A BLACKTOP ROAD ON THE NORTH SIDE WITH ELECTRIC AND WATER AT THE ENTRANCE TO THE PROPERTY OFFERS A NICE AREA TO BUILD A HUNTING CABIN OR HOME.




**BUYAFARM.COM**

Main Office: Sparta IL  
618-443-1998



CONTACT  
MANAGING BROKER  
**WAYNE KELLER**  
Branch Office  
Steeleville IL

 618-407-1679

 [wkeller@buyafarm.com](mailto:wkeller@buyafarm.com)